



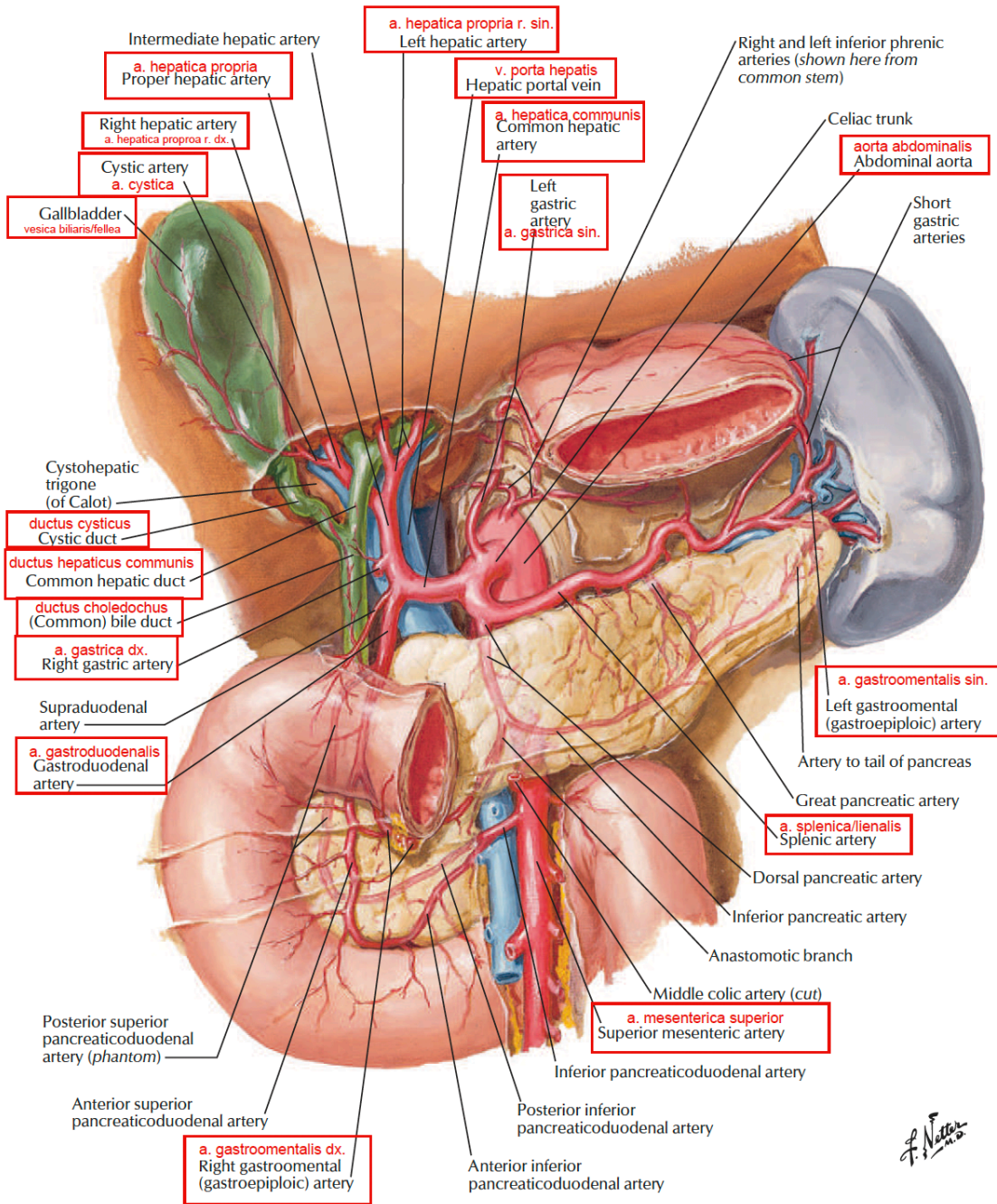
ANATOMI BILDER INFÖR DISSEKTION

Viscera (Buk och bäcken, Thorax och Huvud och
Hals).

Sammanfattning

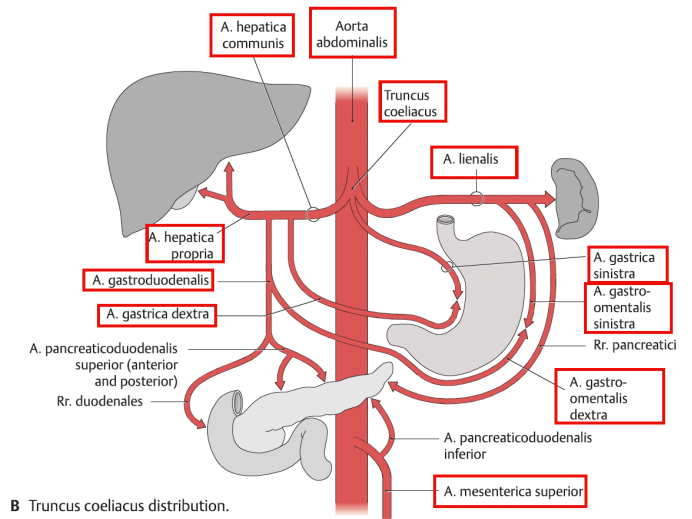
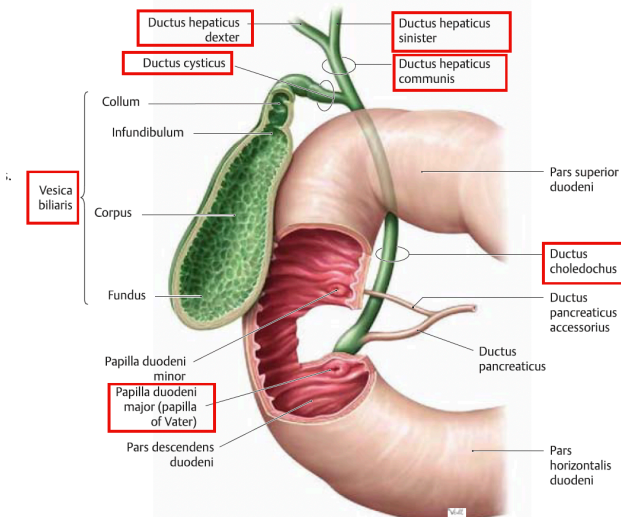
Detta dokument innehåller alla essentiella strukturer som finns med i dissektionsmanualen med bilder om hur strukturerna ligger relativt varandra och dess funktioner och innervation.

Fatemeh Taheri
Fatemeh.taheri@stud.ki.se



F. Netter

Fig. 13.31 Extrahepatic bile ducts
Anterior view. Opened: vesica biliaris and duodenum.

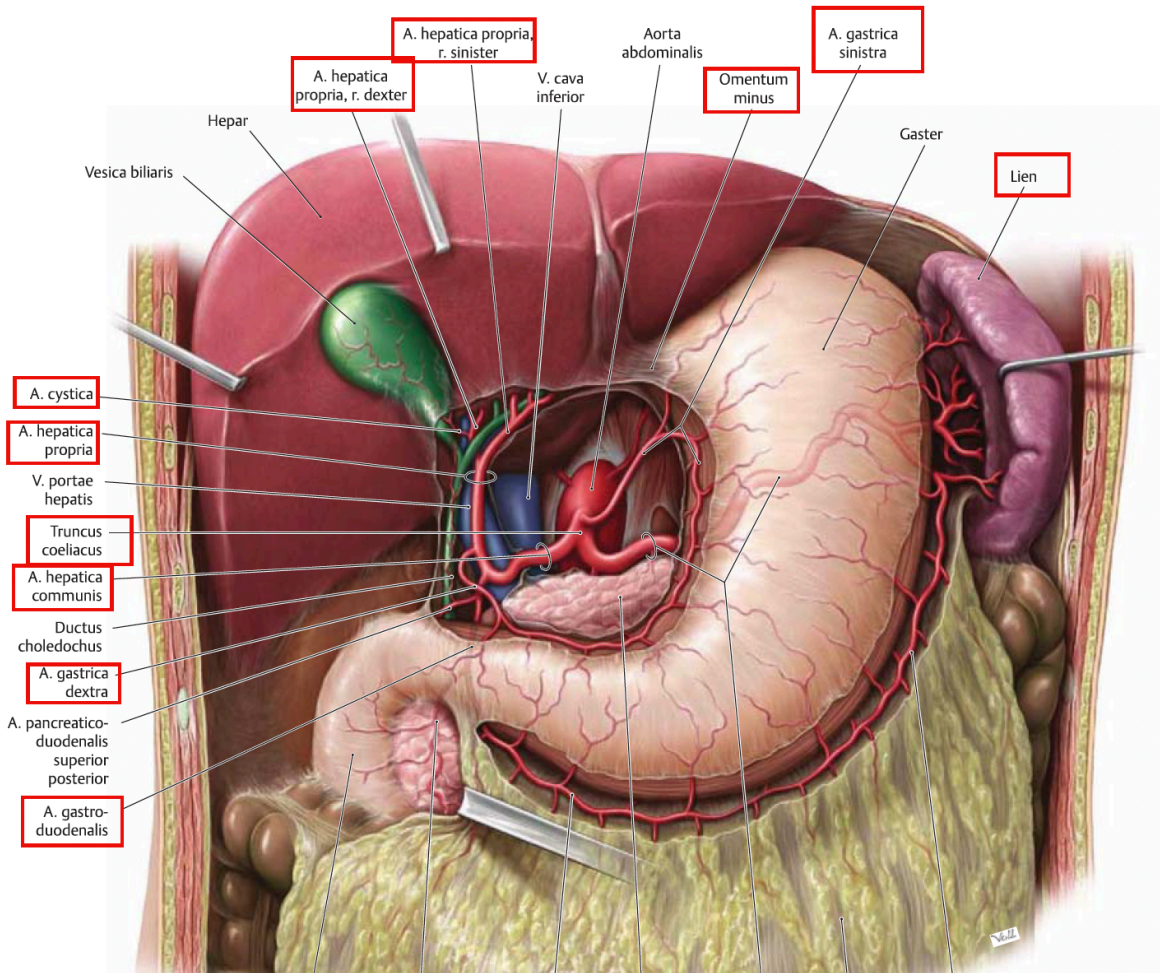
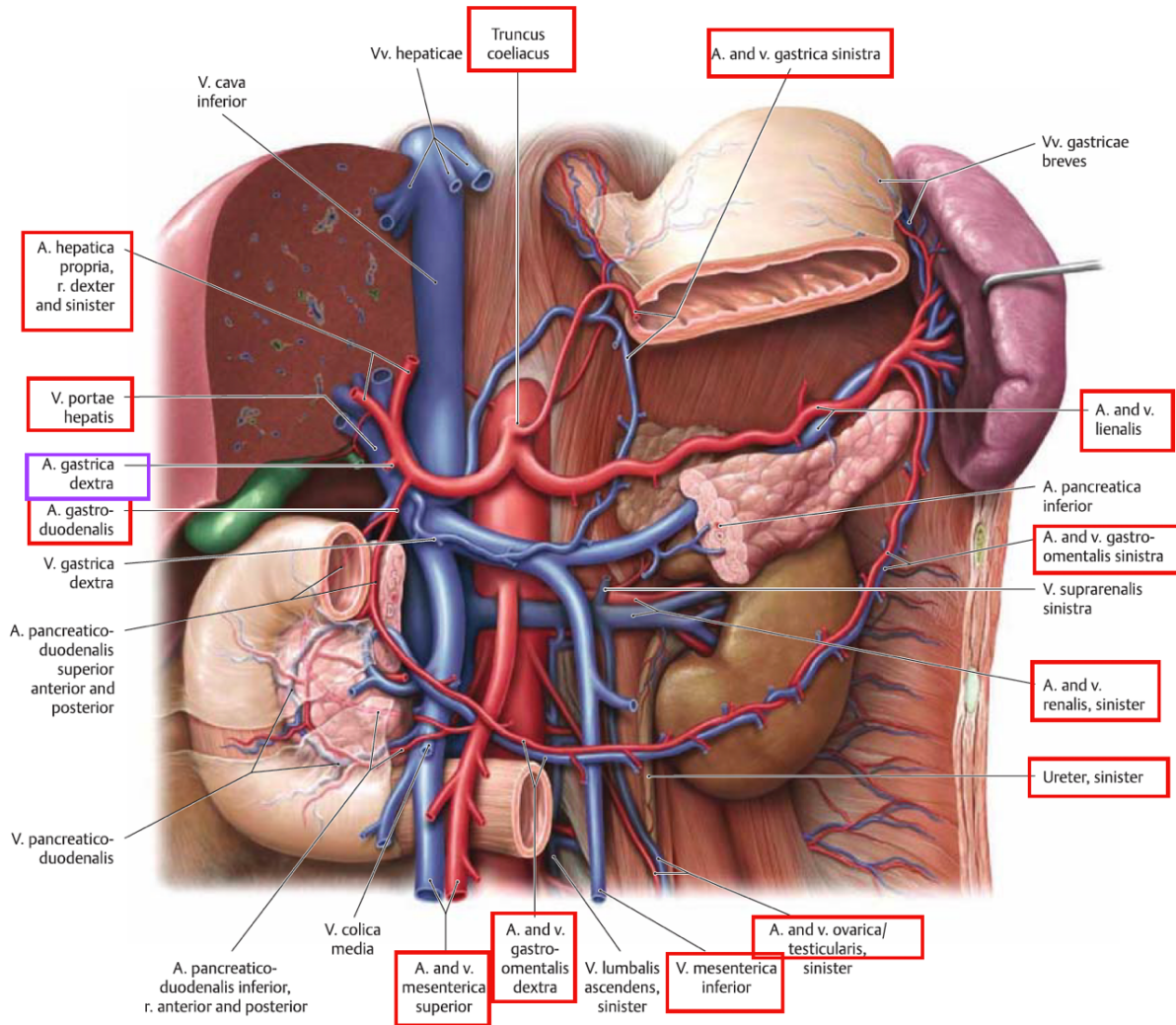


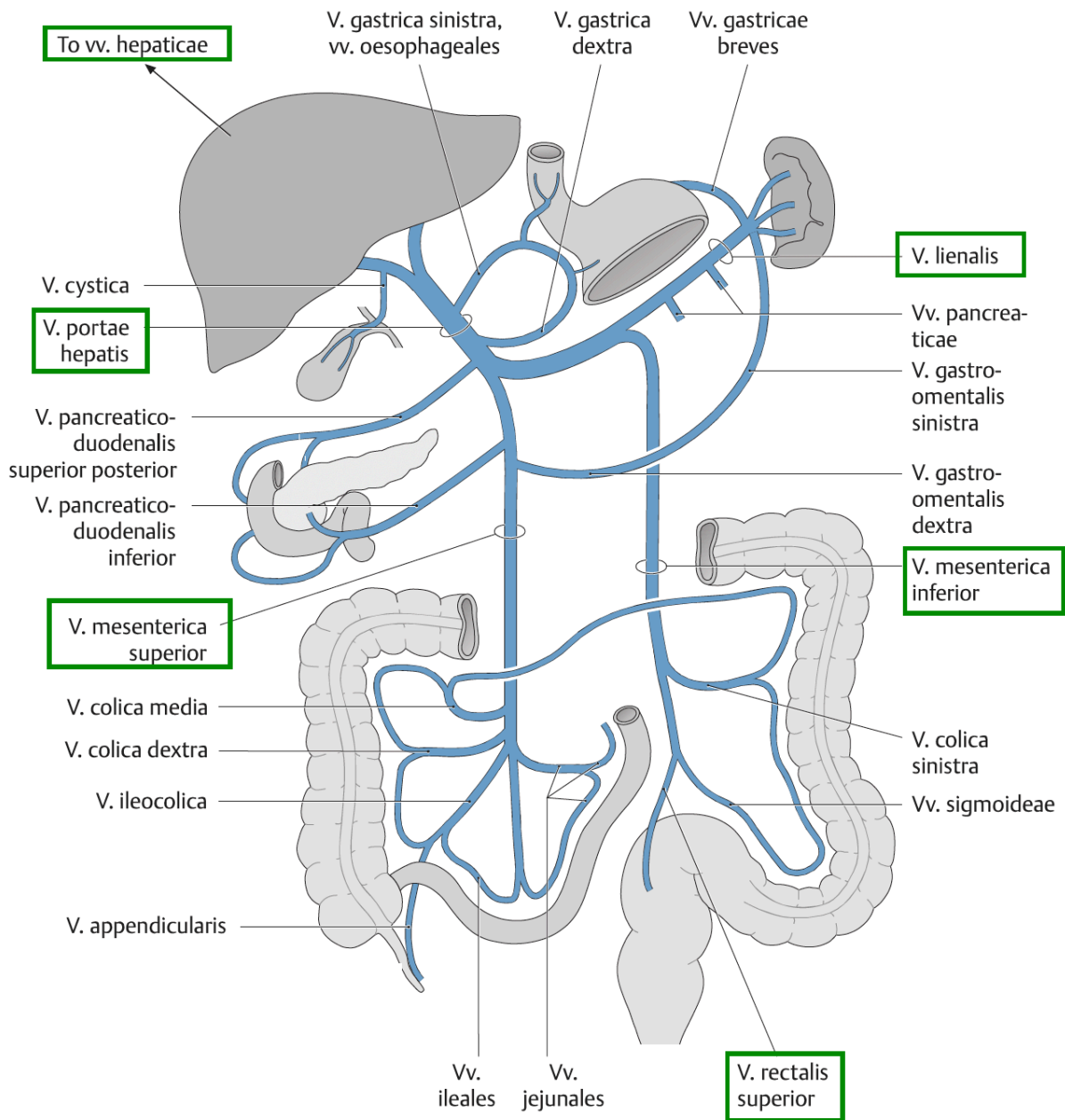
B Truncus coeliacus distribution.

Fig. 15.18 V. portae hepatis: Pancreas and lien
 Anterior view. *Partially removed: Gaster, pancreas, and peritoneum.*

Under truncus coeliacus löper v. lienalis/splenic.
 Under a. mesenterica superior löper v. renalis sin.

a. gastrica dx kommer efter a. gastroduodenalis!



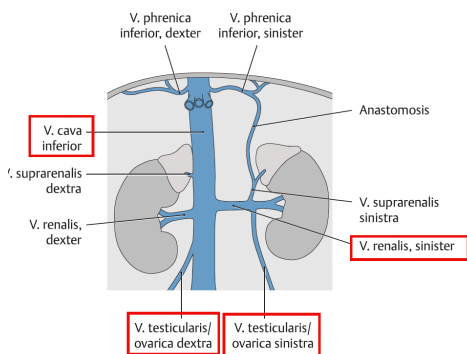


v. portae hepatis

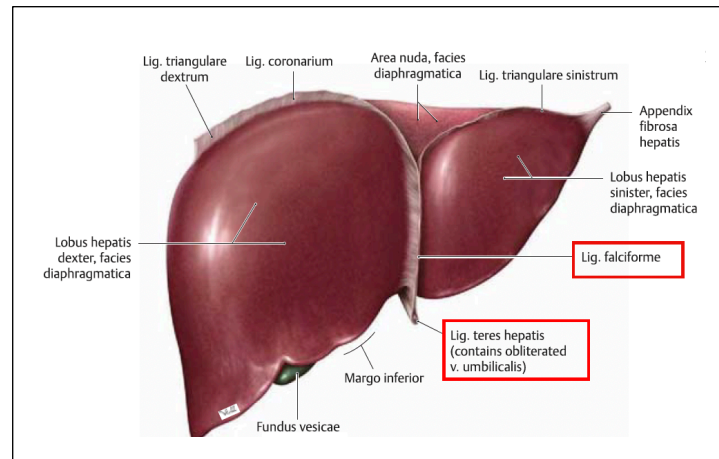
- v. splenica/lienalis
- v. mesenterica inferior
- v. mesenterica superior

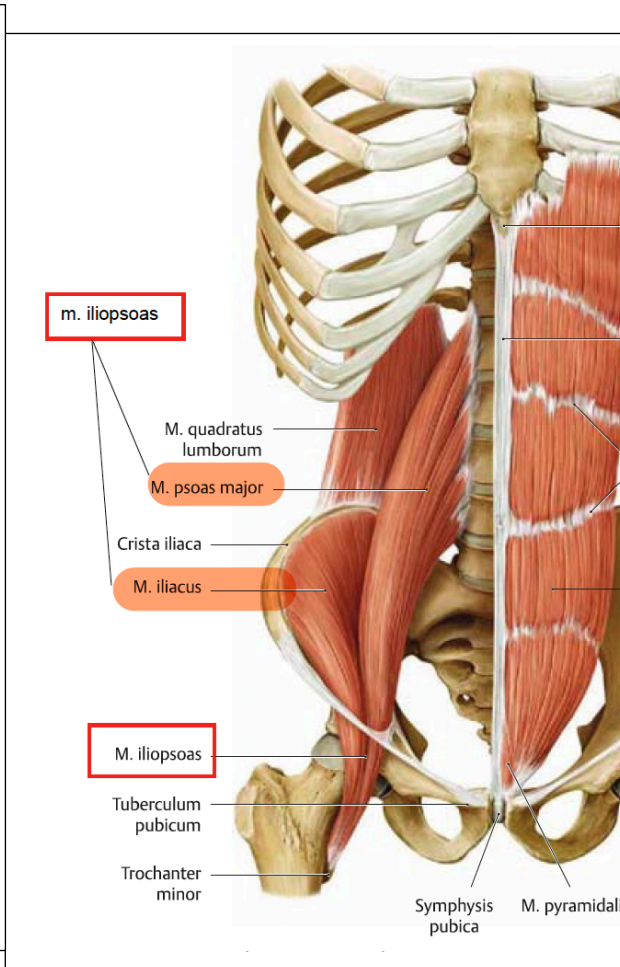
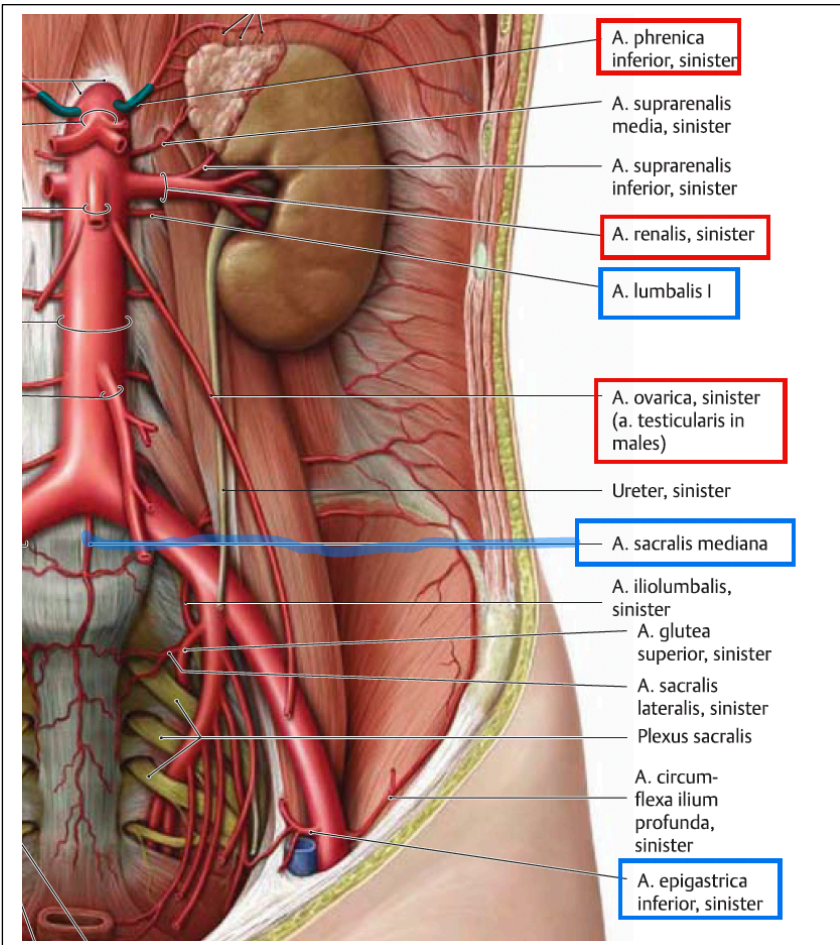
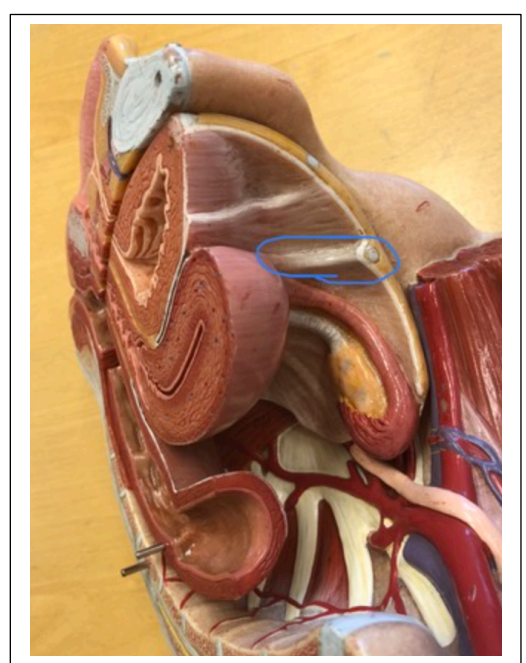
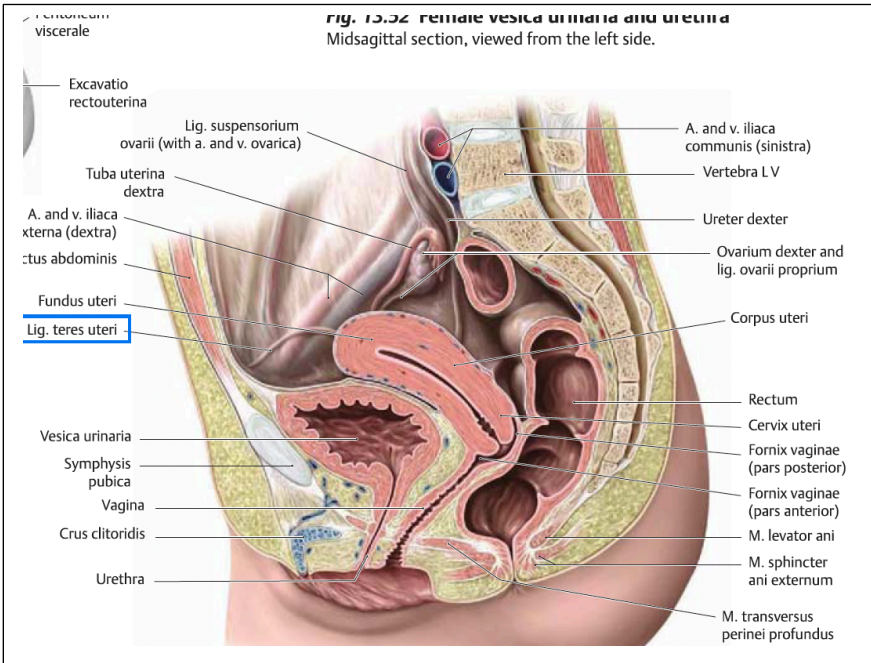
v. ovarica/testicularis sin. grenar från v. renlais sin.

v. ovarica/testicularis dx grenar från IVC.



V. portae distribution.





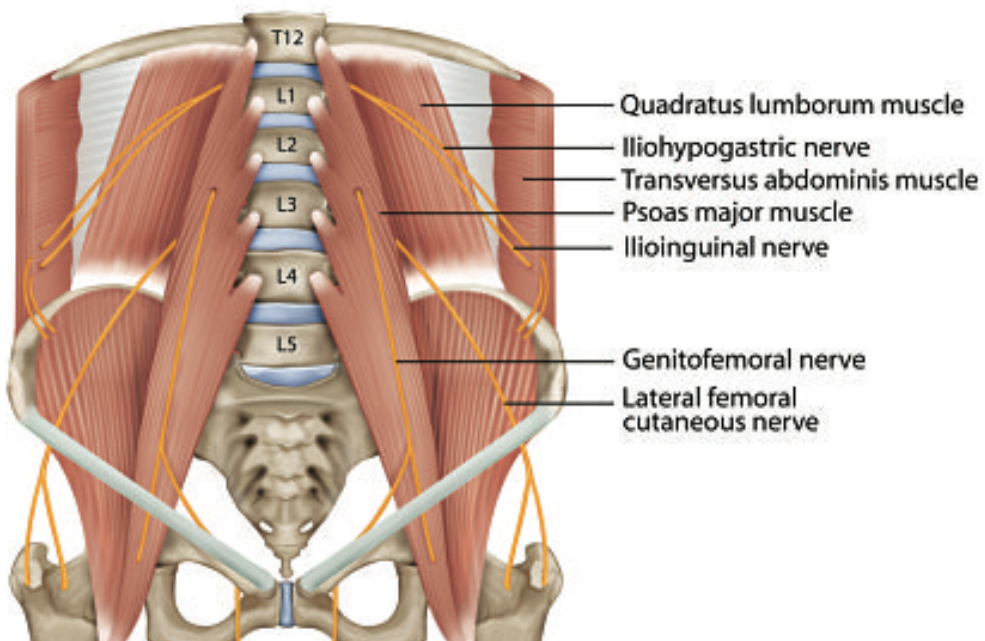
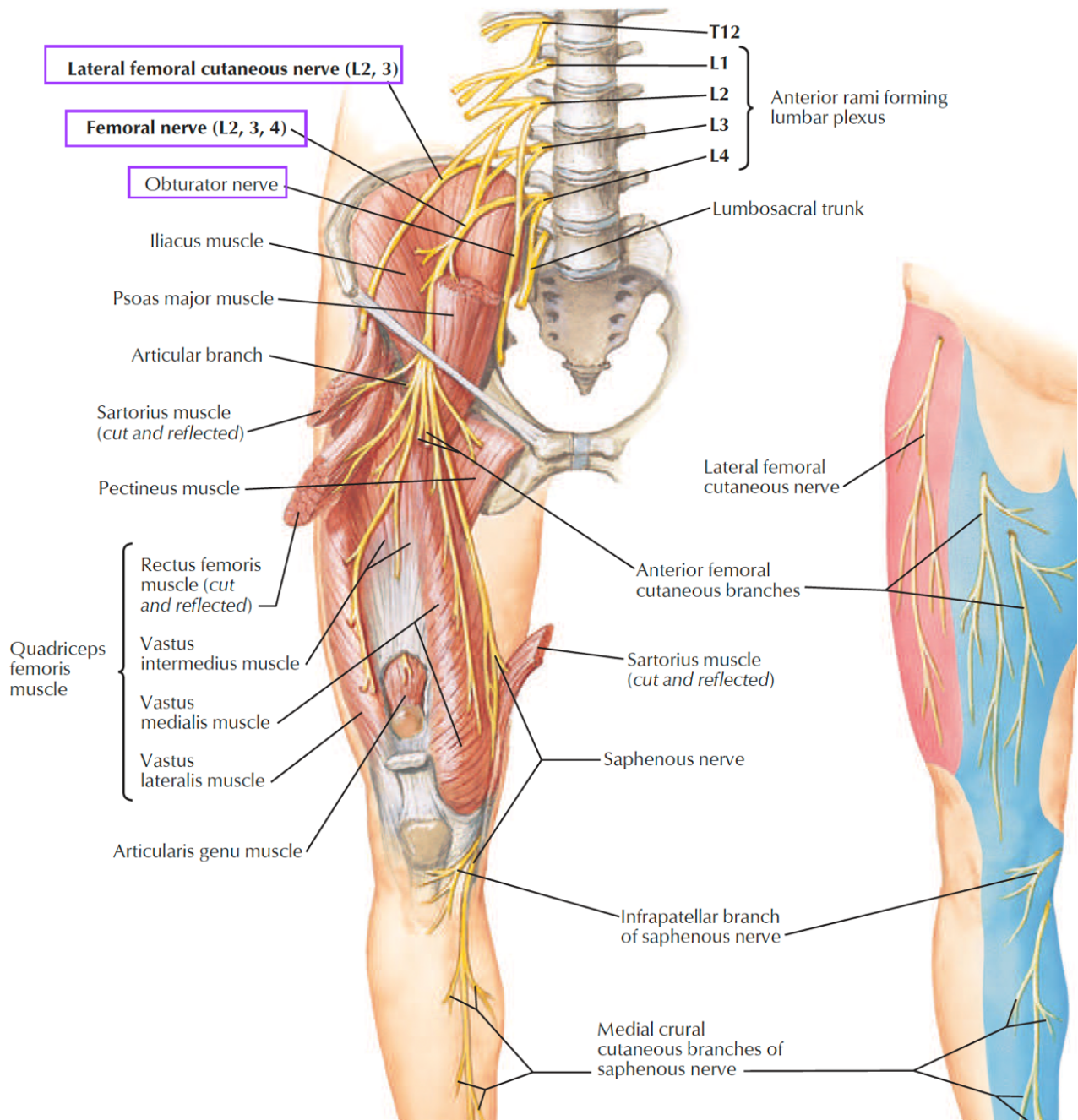
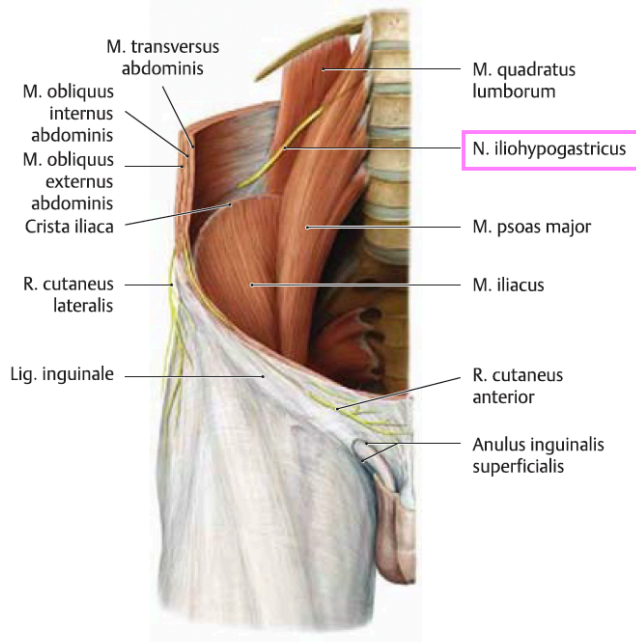
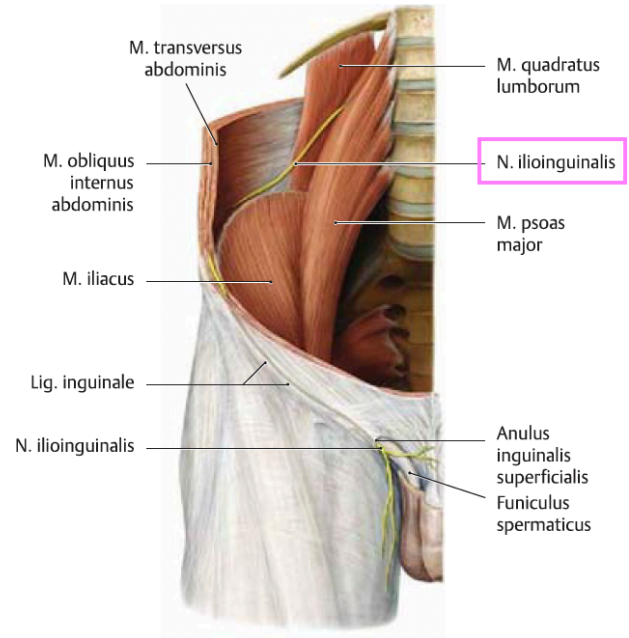


Fig. 27.13 Nerves of plexus lumbalis

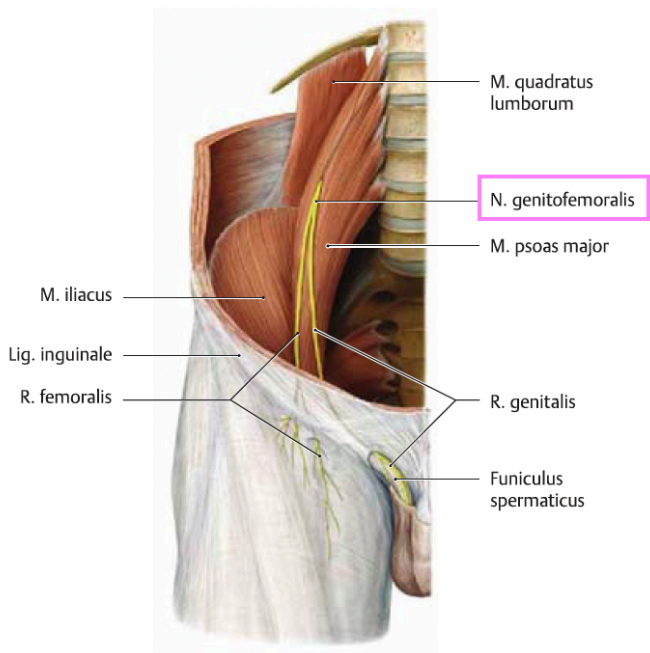
Right side, anterior view with the anterior abdominal wall removed.



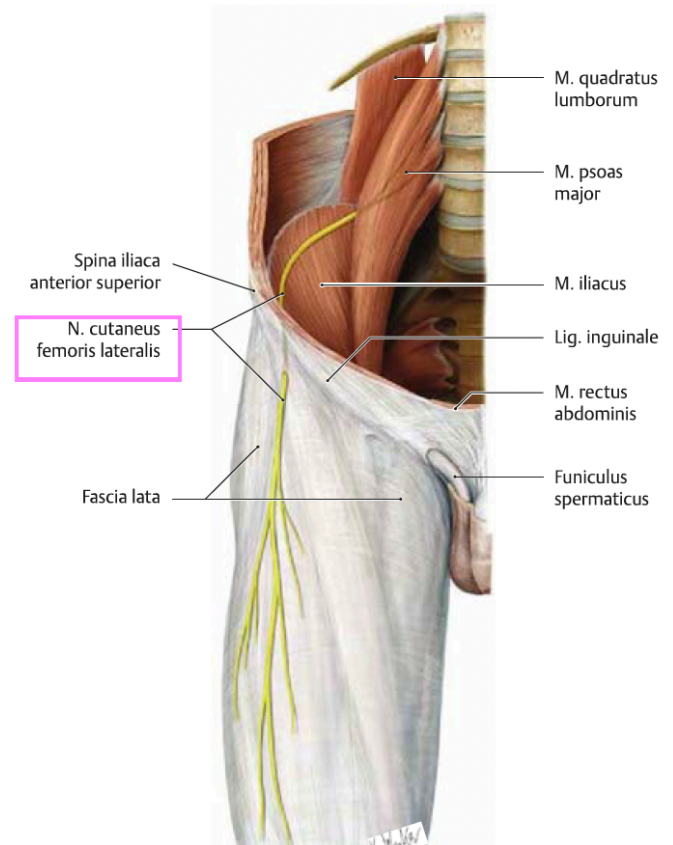
A N. iliohypogastricus.



B N. ilioinguinalis.

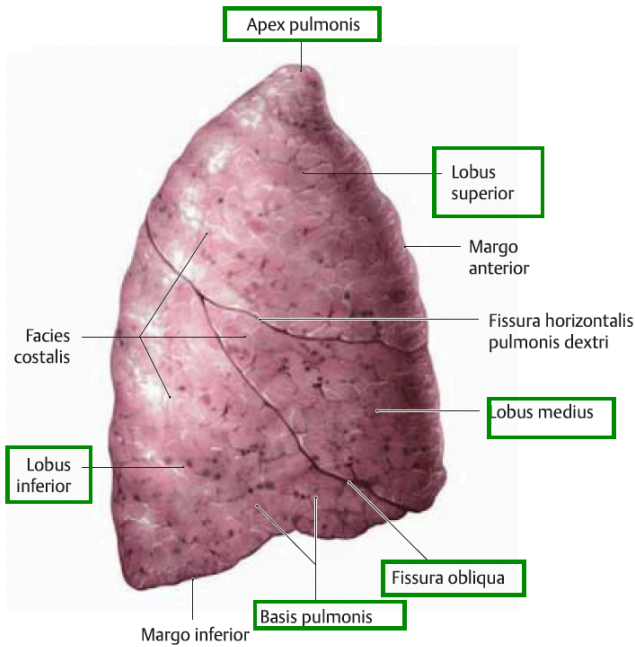


C N. genitofemoralis.

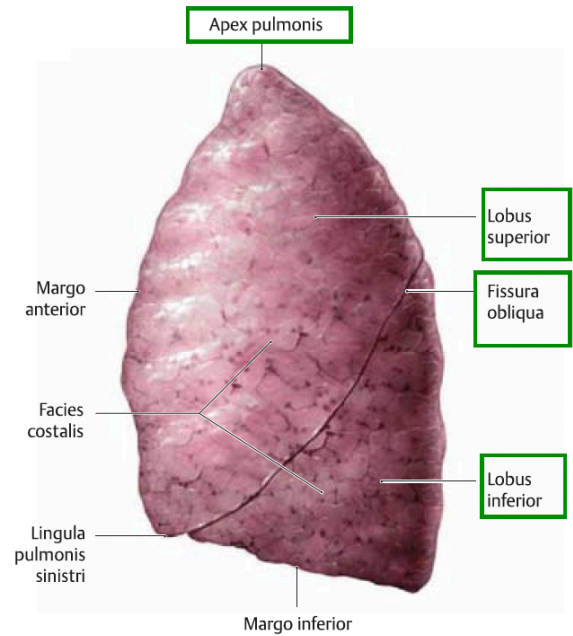


- I = n. iliohypogastricus (L1)
- Ingenmansland = n. ilioinguinalis (L1)
- Går = n. genitofemoralis (L1-L2)
- Cutaneus = n. cutaneus femoralis laterlais (L2-L3)
- Förvånansvärt = n. femoralis (L2-L4)
- Obehindrat = n. obturatorius (L2-L4)

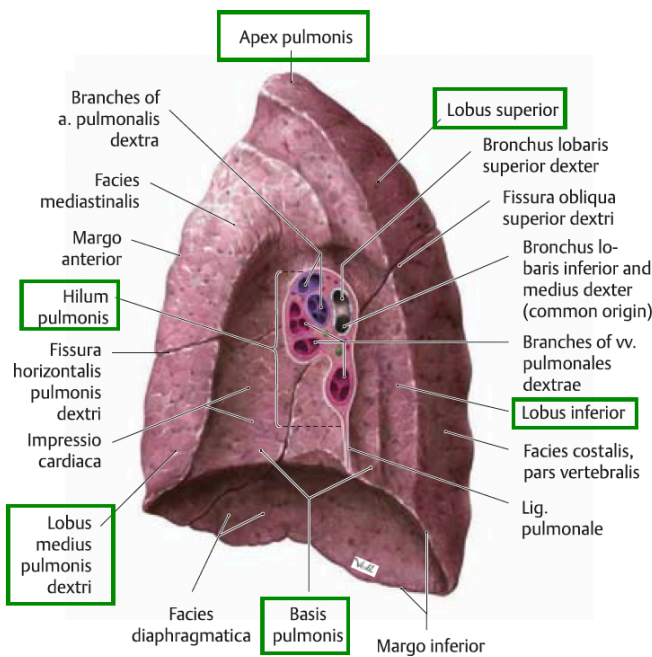
Fig. 8.5 Gross anatomy of the lungs



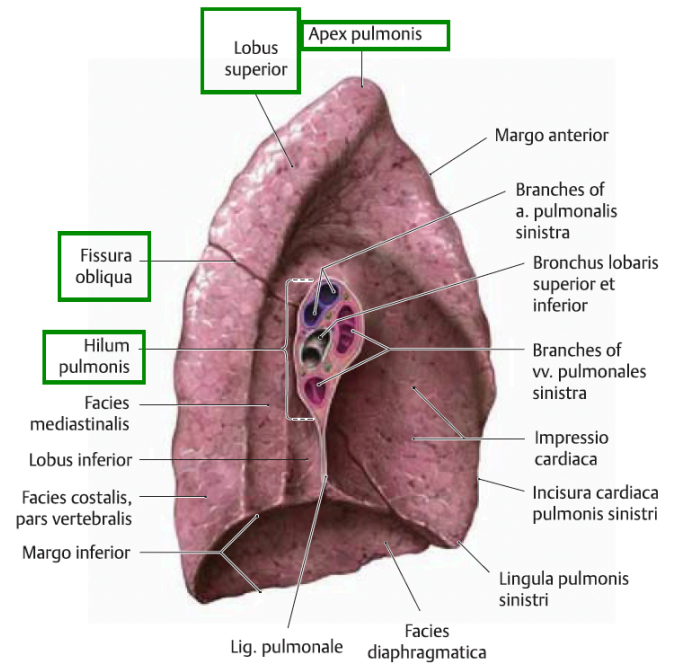
A Right lung, lateral view.



B Left lung, lateral view.



C Right lung, medial view.

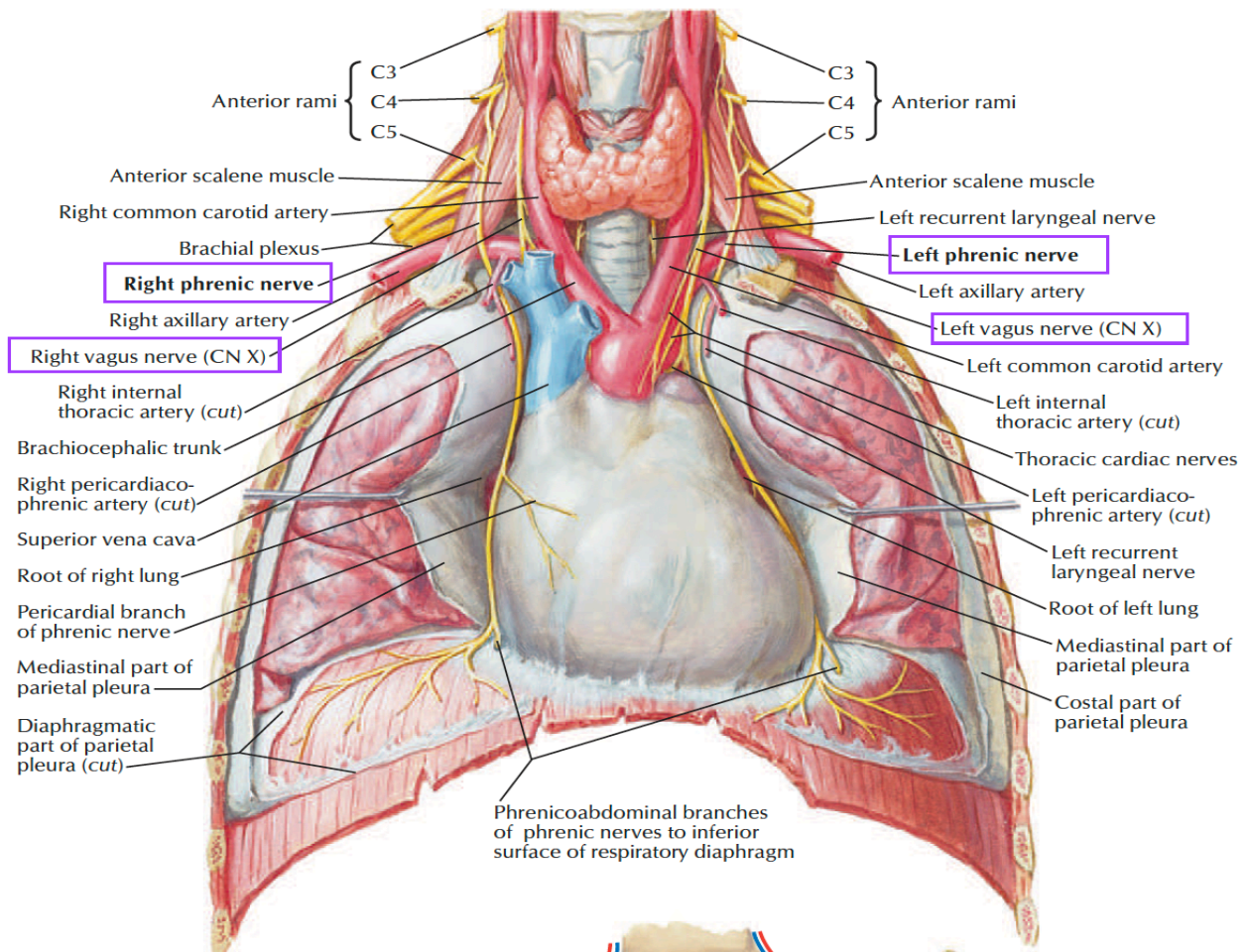


D Left lung, medial view.

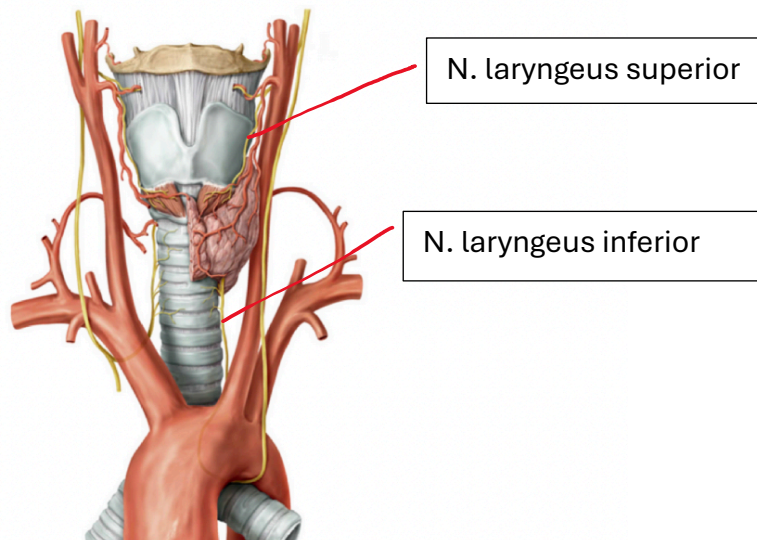
Ventriculus dx → truncus pulmonalis → a. pulmonalis dx. et sin. (syrefattigt)

4 vv. pulmonales (syrerikt) → atrium sin.

- två från varje lunga
 - **v. pulmonalis dextra superior och inferior** (vv. Pulmonales dextrae)
 - **v. pulmonalis sinistra superior och inferior** (vv. Pulmonales sinistrae)
- - n. laryngeus. (recurrens)
- - n. laryngeus recurrens dx. svänger upp under a. subclavia dx.
- - n. laryngeus recurrens sin. svänger under arcus aortae.



Nervus laryngeus recurrens (gren från n. vagus)



n. laryngeus. (recurrens)

- n. laryngeus recurrens dx. svänger under a. subclavia dx.

- n. laryngeus recurrens sin. svänger under arcus aortae.

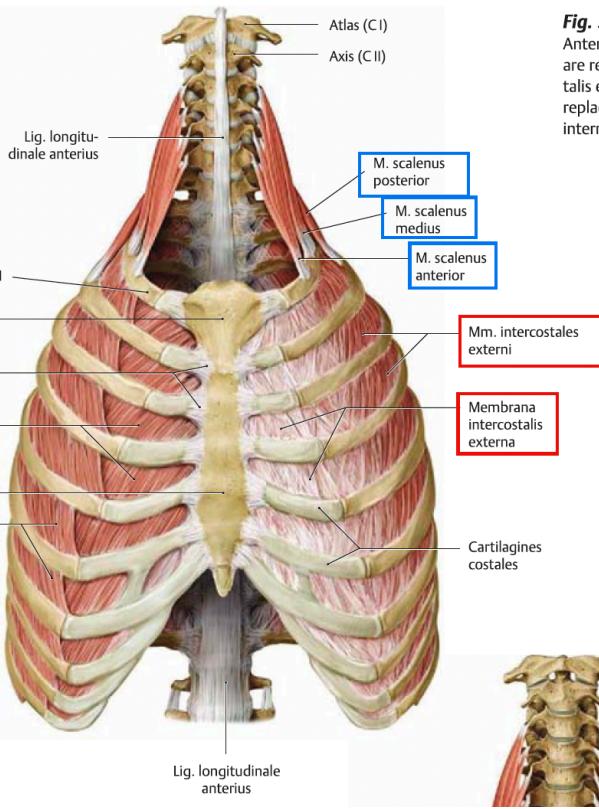
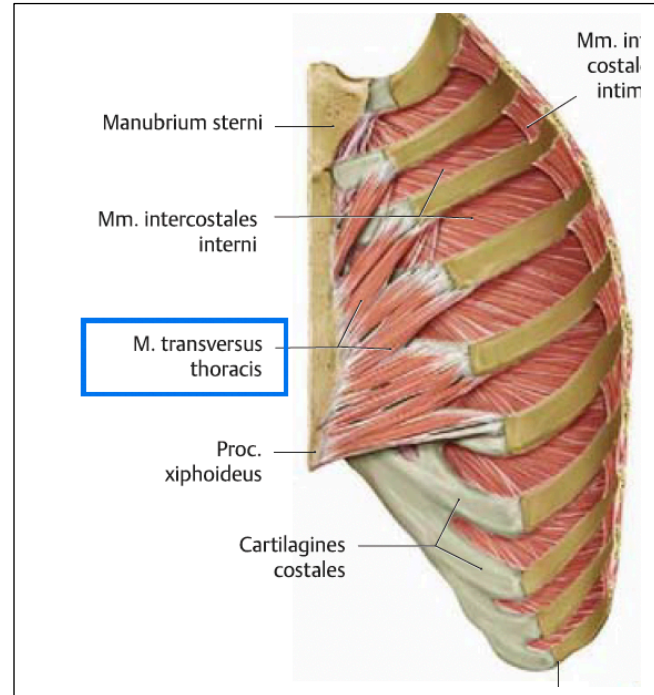
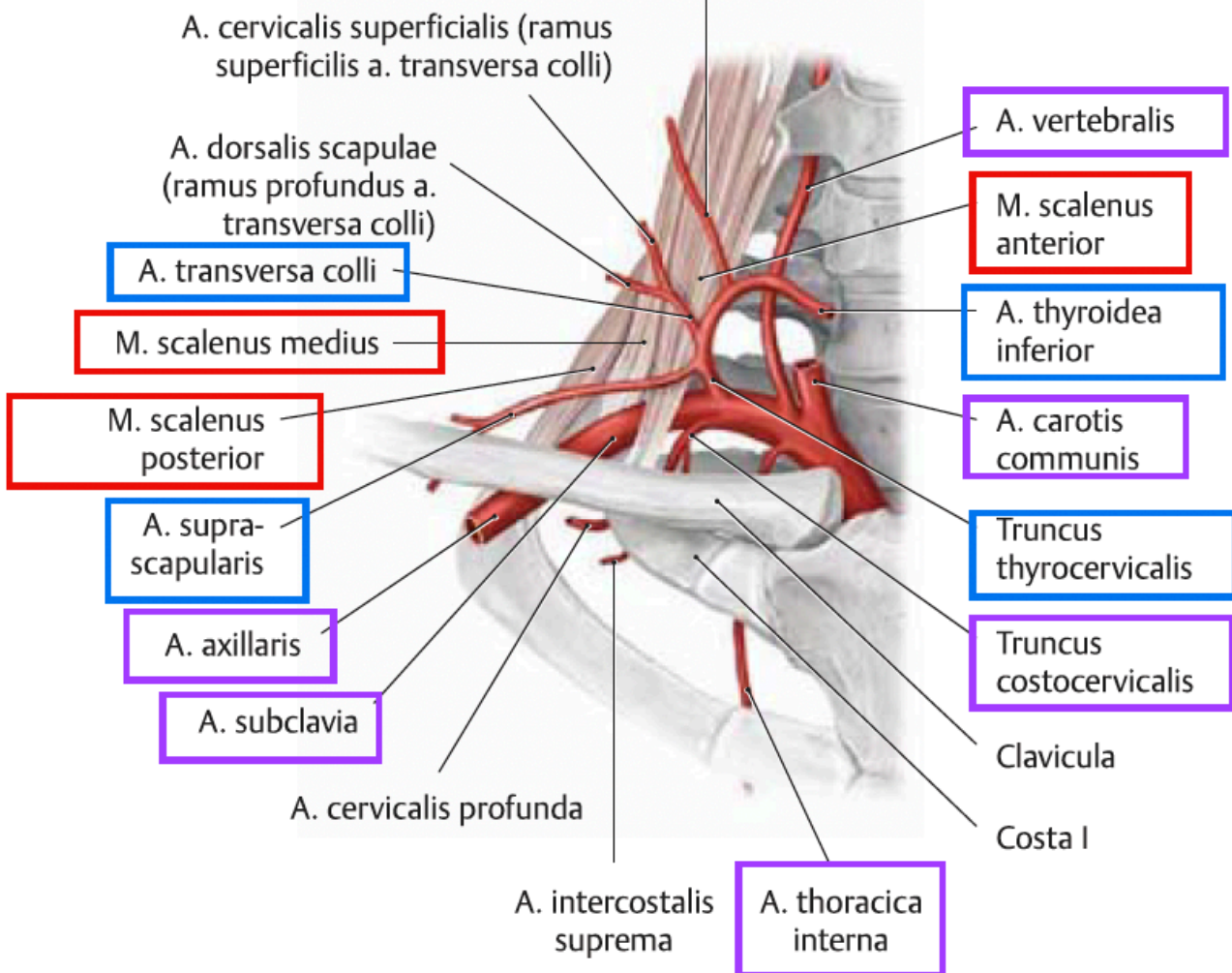


Fig. :
Anter
are re
talis €
repla
interr



Mm. in
costal
intim

A. cervicalis ascendens



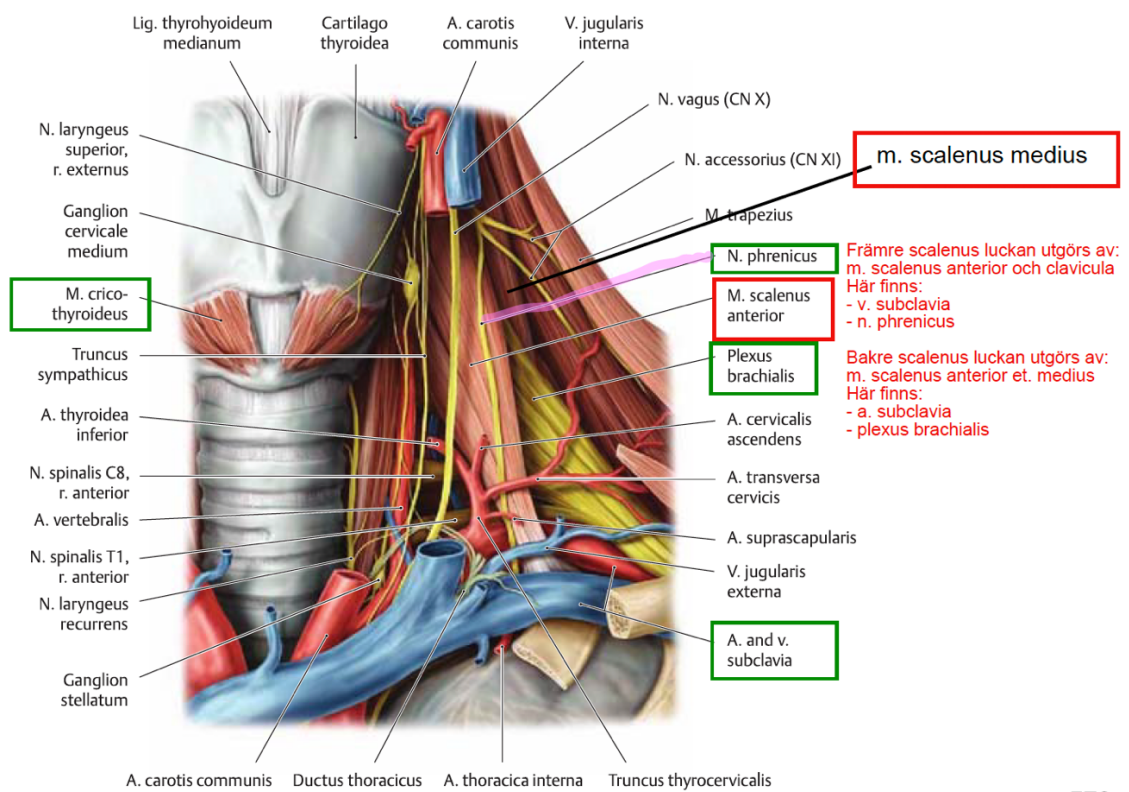
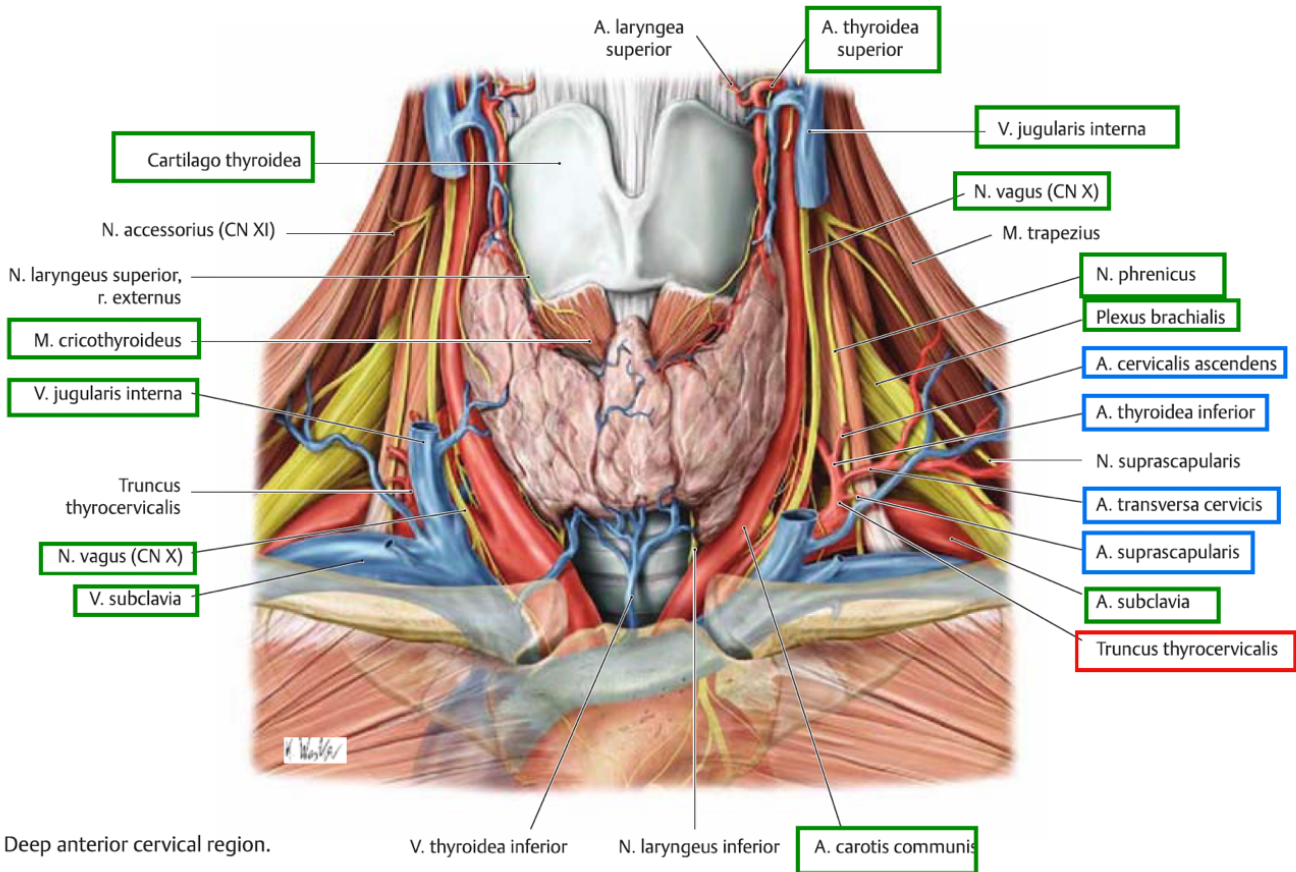
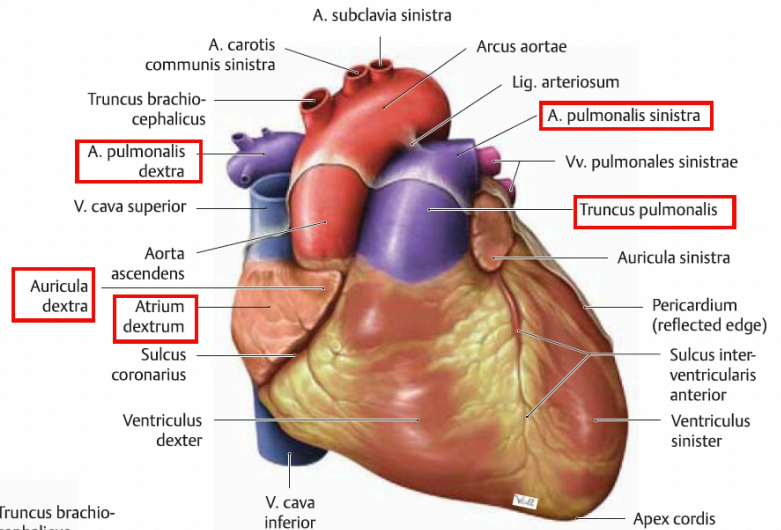
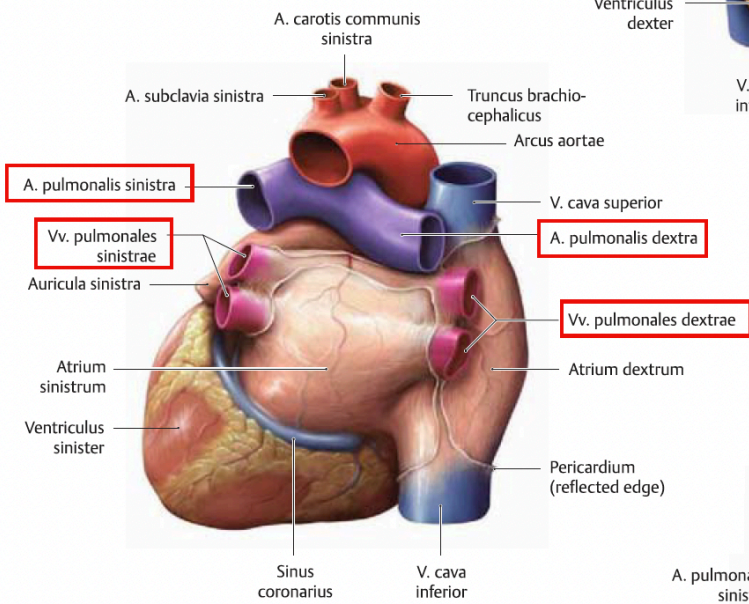


Fig. 7.11 Surfaces of the heart

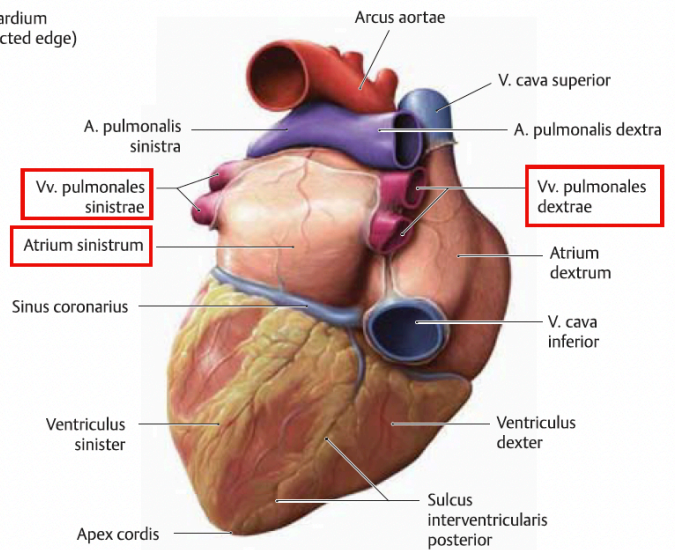
The heart has three surfaces: anterior (facies sternocostalis), posterior (basis cordis), and inferior (facies diaphragmatica).



A Anterior surface (facies sternocostalis).



B Posterior surface (basis cordis).



C Inferior surface (facies diaphragmatica).

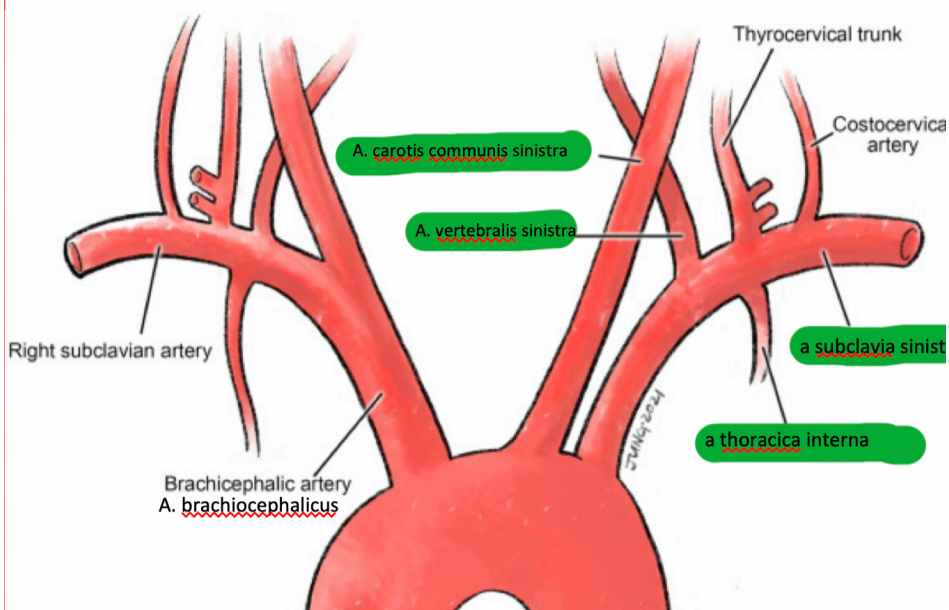
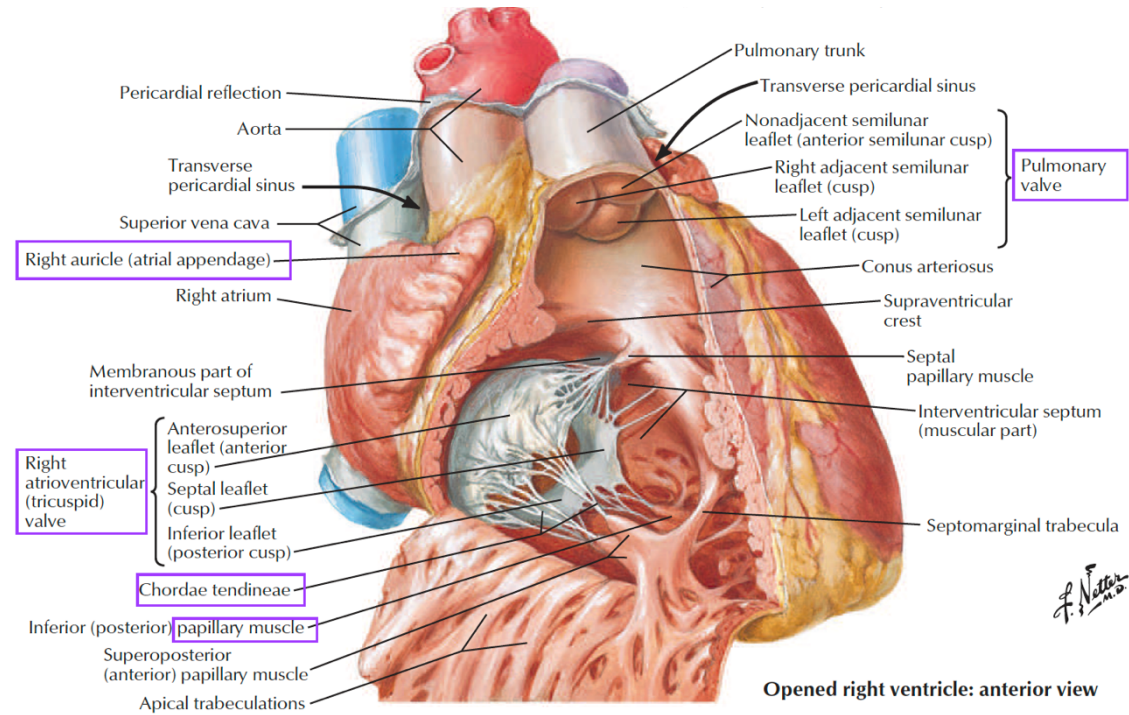
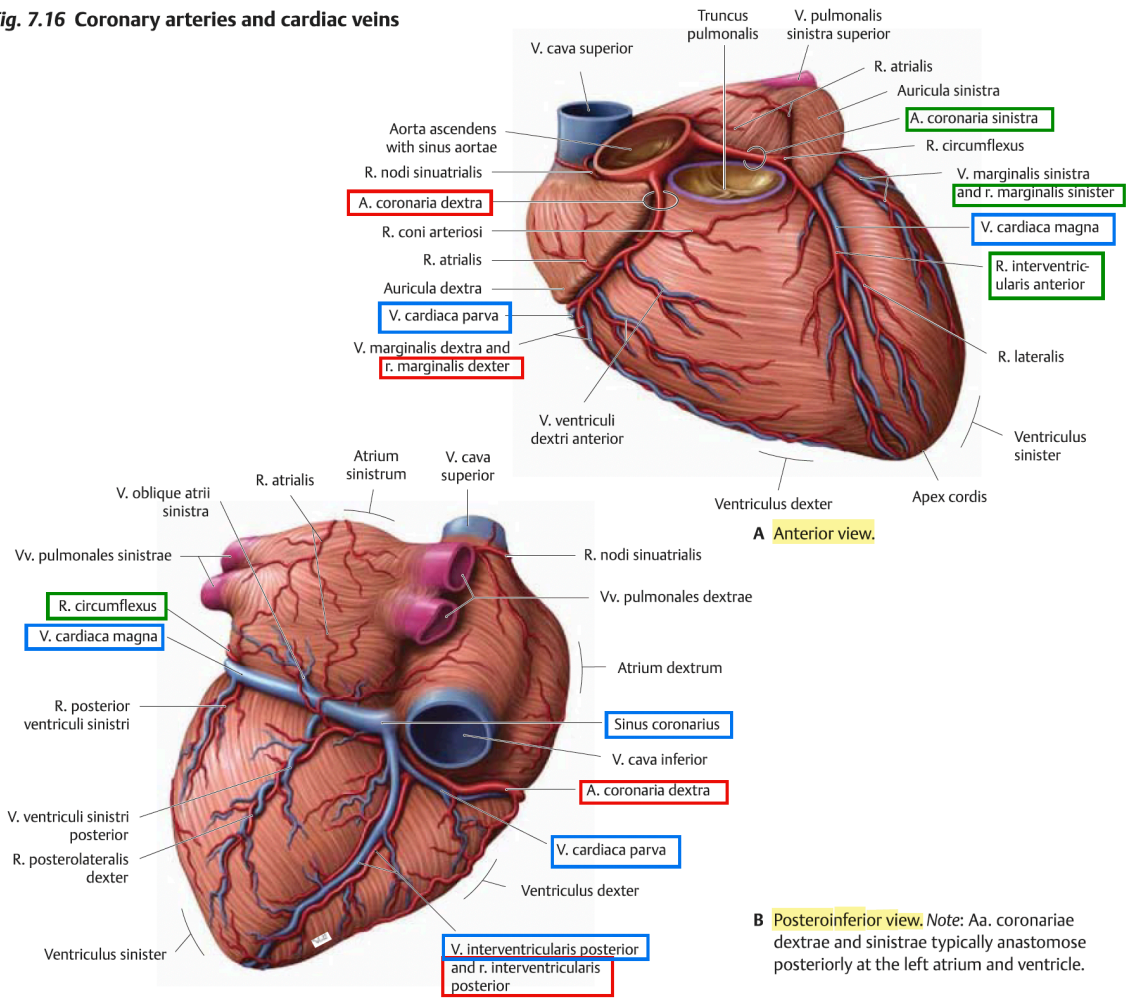


Fig. 7.16 Coronary arteries and cardiac veins



F. Netter M.D.

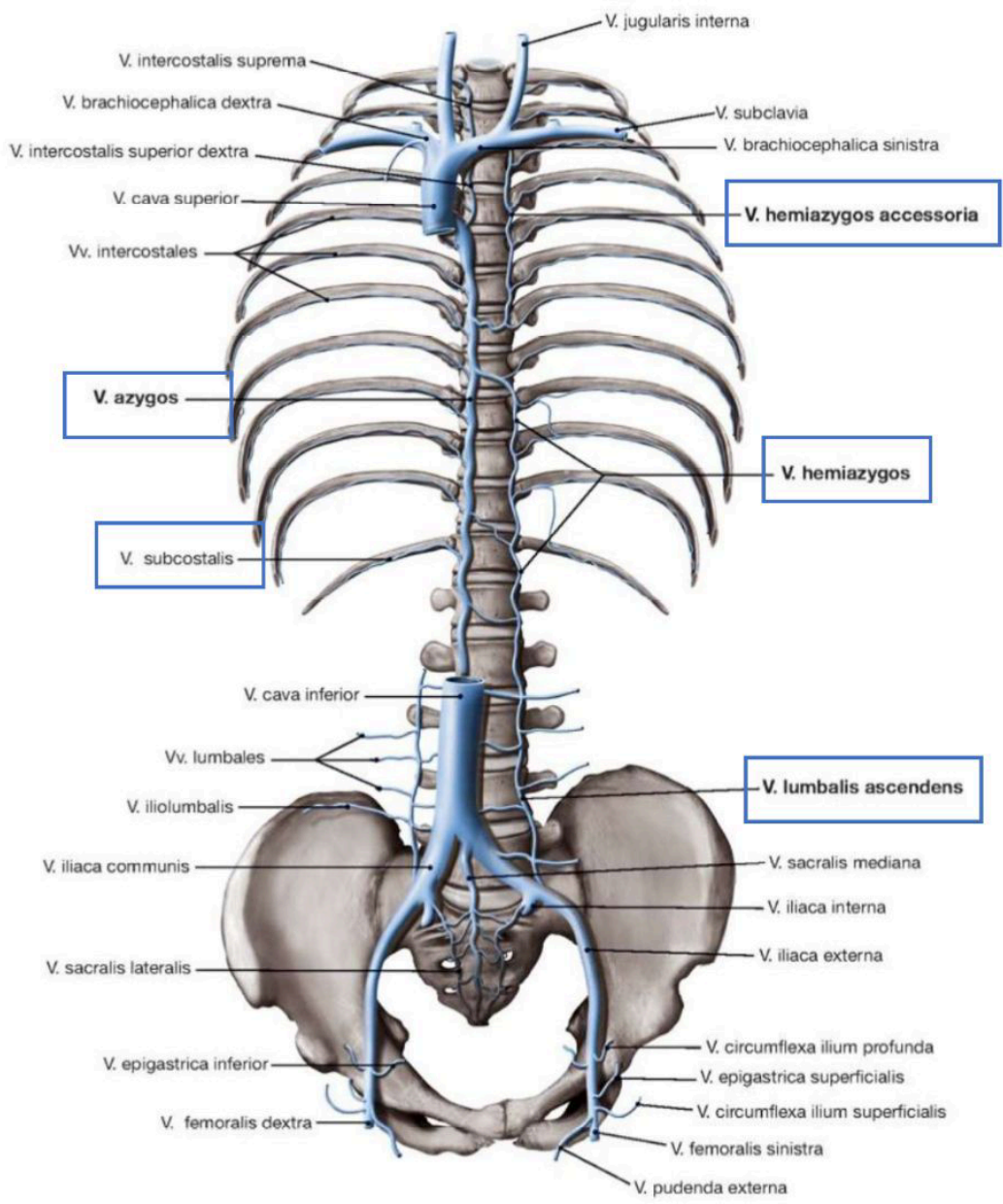
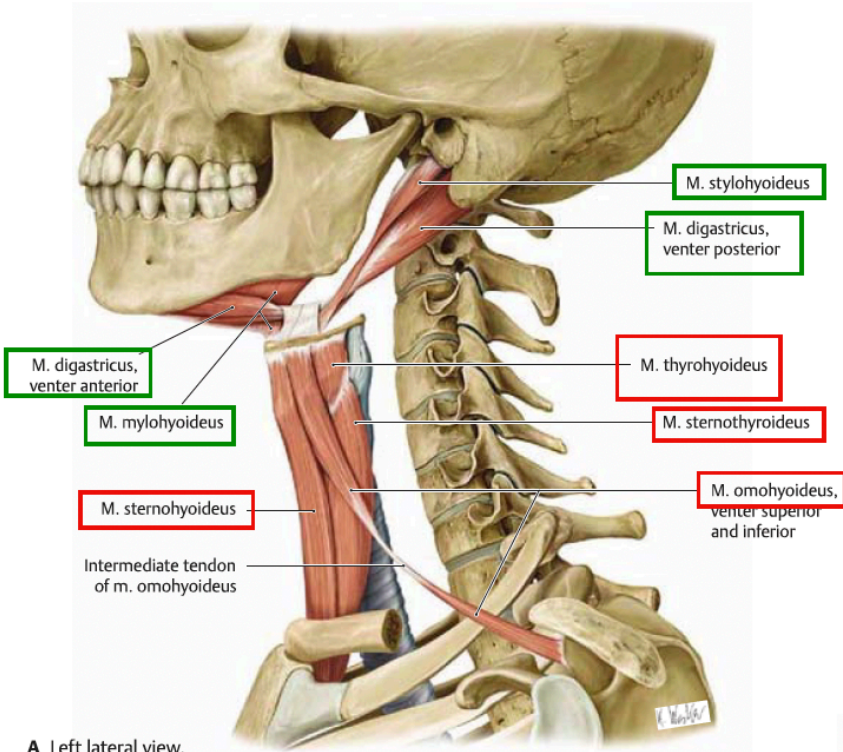


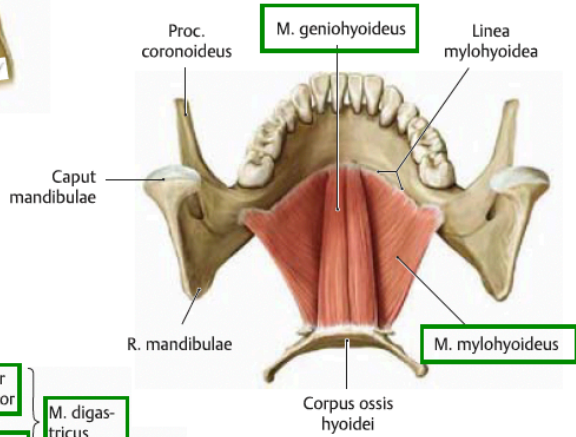
Fig. 37.8 Supra- and infrahyoid muscles

Infrahyoidala muskler
T: m. thyrohyoideus
O: m. omohyoideus
S: m. sternohyoideus
S: m. sternothyroideus

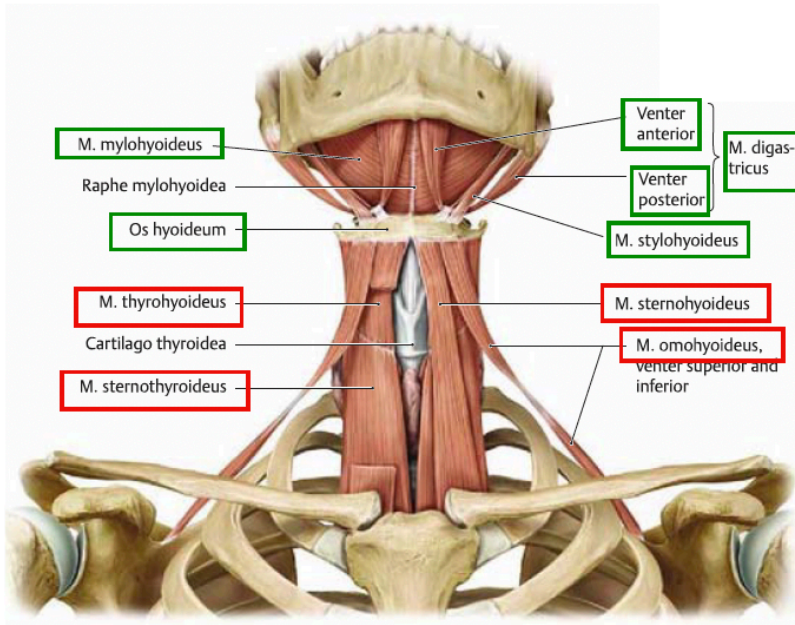
Suprahyoidala muskler:
My: m. mylohyoideus
Gravy: m. geniohyoideus
Spoon: m. stylohyoideus
Darling: m. digastricus terior



A Left lateral view.



B M. mylohyoideus and m. geniohyoideus (oral floor), **posterosuperior view.**



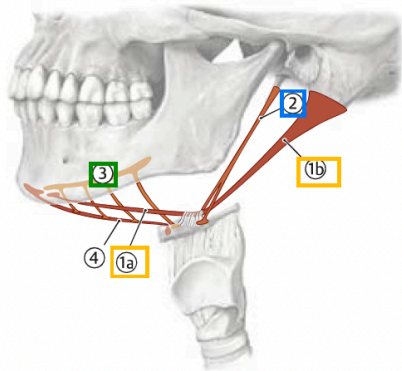
C **Anterior view.** M. sternohyoideus has been cut (right).

Table 37.5 Suprahyoid muscles

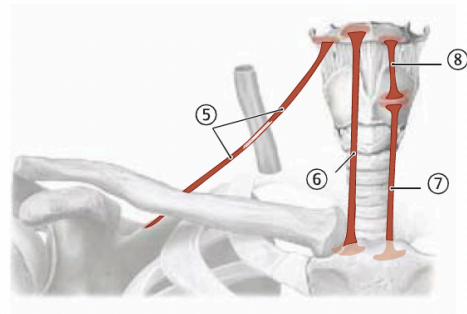
The suprahyoid muscles are also considered accessory muscles of mastication.

Muscle	Origin	Insertion	Innervation	Action
M. digastricus	1a) Venter anterior	Mandibula (Fossa digastrica)	N. mylohyoideus (from CN V ₃) N. facialis (CN VII)	Elevates hyoid bone (during swallowing), assists in opening mandibula
	1b) Venter posterior	Os temporale (incisura mastoidea, medial to proc. mastoideus)		
2) M. stylohyoideus	Os temporale (proc. styloideus)	Os hyoideum (corpus)		
3) M. mylohyoideus	Mandibula (linea mylohyoidea)		N. mylohyoideus (from CN V ₃)	Tightens and elevates oral floor, draws hyoid bone forward (during swallowing), assists in opening mandibula and moving it side to side (mastication)
4) M. geniohyoideus	Mandibula (spina mentalis inferior)		R. ventralis of C1 via (via CN XII)	Draws hyoid bone forward (swallowing), assists in opening mandibula

Fig. 37.7 Supra- and infrahyoid muscles



A Suprahyoid muscles, left lateral view.

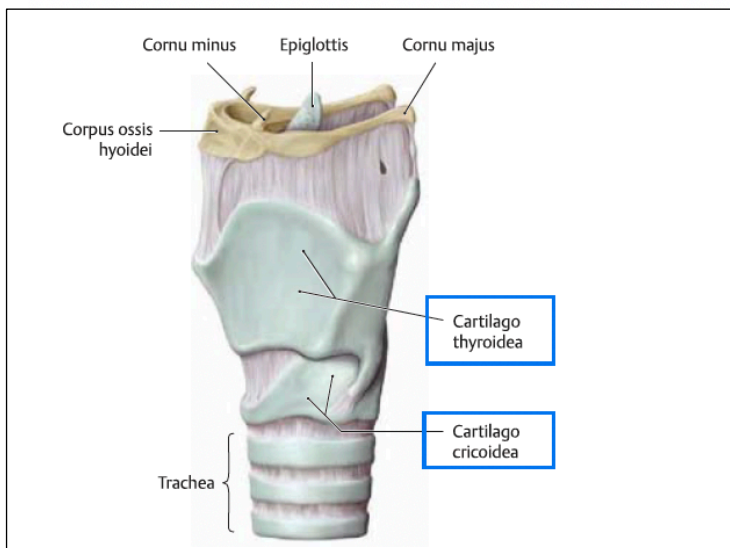


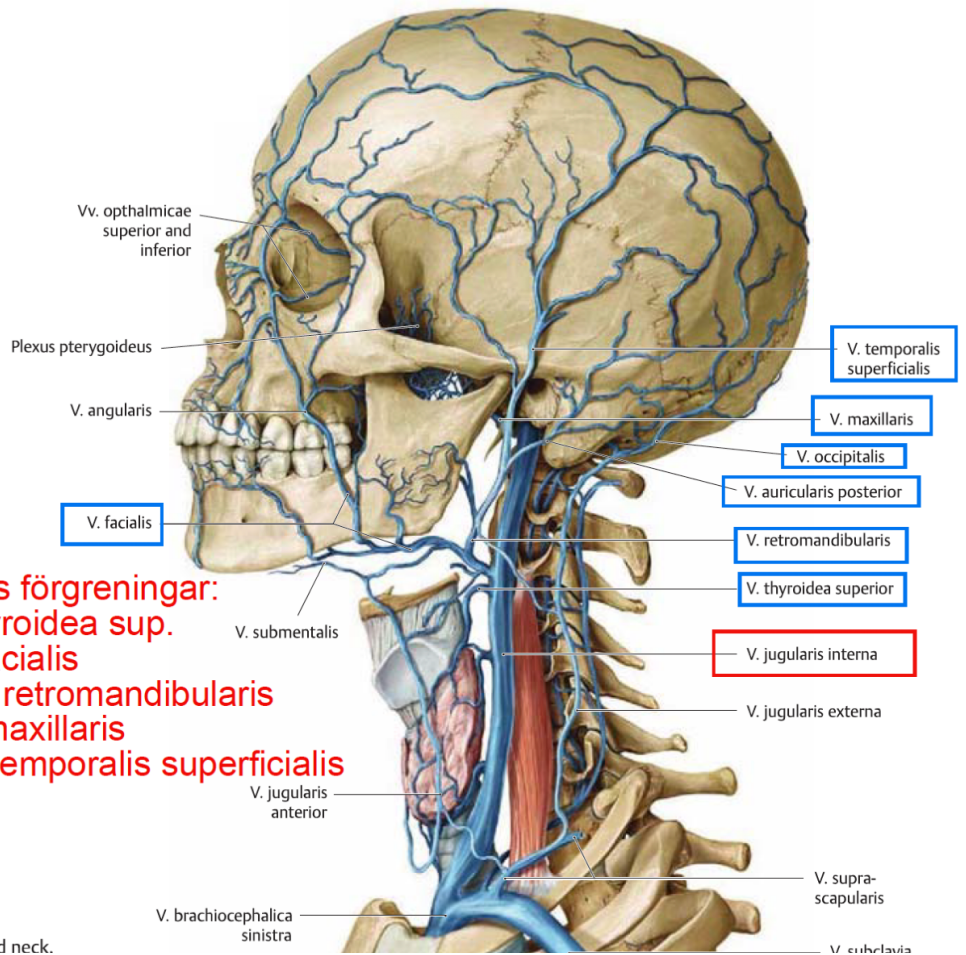
B Infrahyoid muscles, anterior view.

Table 37.6 Infrahyoid muscles

Muscle	Origin	Insertion	Innervation	Action
5) M. omohyoideus	Scapula (margo superior)	Os hyoideum (corpus)	Ansa cervicalis of plexus cervicalis (C1–C3)	Depresses (fixes) hyoid, draws larynx and hyoid down for phonation and terminal phases of swallowing*
6) M. sternohyoideus	Manubrium sterni and articulo sternoclaviculare (posterior surface)			
7) M. sternothyroideus	Manubrium sterni (posterior surface)	Cartilago thyroidea (linea obliqua)	Ansa cervicalis (C2–C3)	
8) M. thyrohyoideus	Cartilago thyroidea (linea obliqua)	Os hyoideum (corpus)	C1 via n. hypoglossus (CN XII)	Depresses and fixes hyoid, raises the larynx during swallowing

* The m. omohyoideus also tenses the fascia cervicalis (with an intermediate tendon).

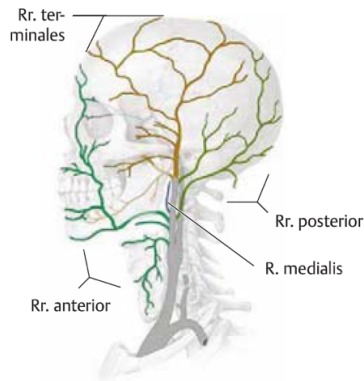




V. jugularis förgreningar:
The: v. thyroidea sup.
Face: v. facialis
Reacts: v. retromandibularis
Many: v. maxillaris
Times: v. temporalis superficialis

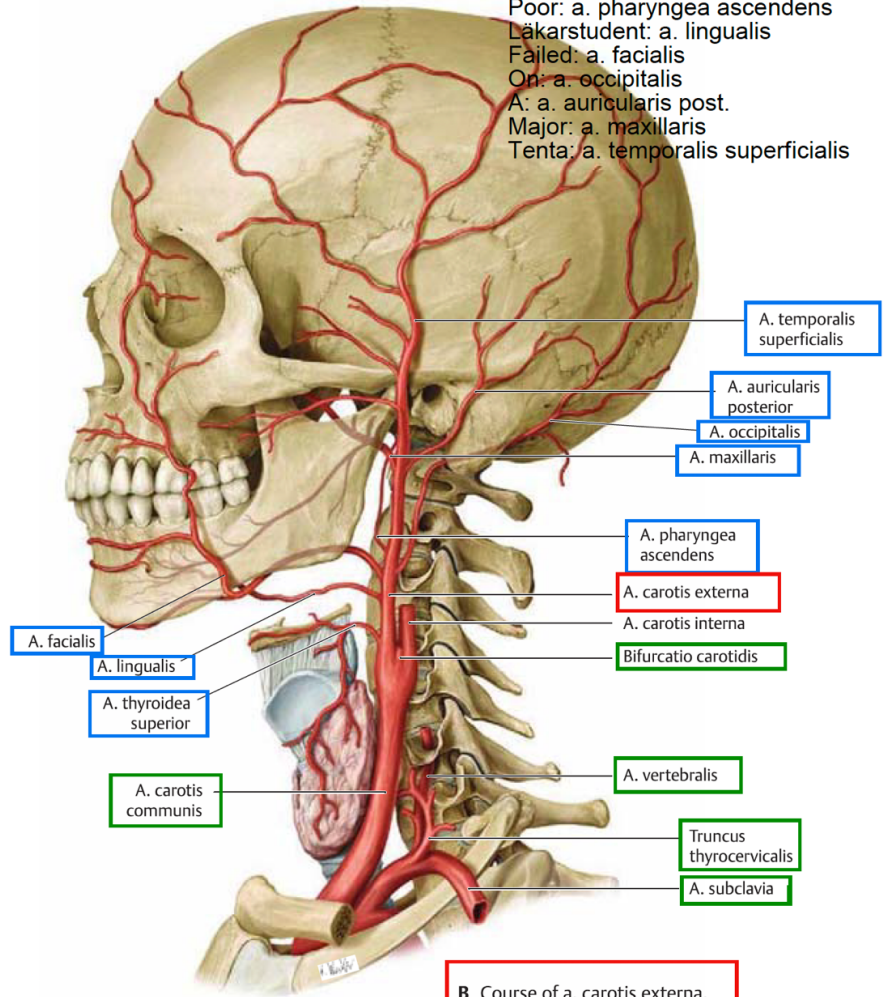
B Superficial veins of the head and neck.

Fig. 32.4 A. carotis externa: Overview
 Left lateral view.



A Schematic of a. carotis externa.

The: a. thyroidea sup.
Poor: a. pharyngea ascendens
Läkarstudent: a. lingualis
Failed: a. facialis
On: a. occipitalis
A: a. auricularis post.
Major: a. maxillaris
Tenta: a. temporalis superficialis



B Course of a. carotis externa.

Table 32.1		Rr. of the A. carotis externa
Group	Artery	
Anterior (p. 492)	A. thyroidea superior	
	A. lingualis	
	A. facialis	
Medial (p. 492)	A. pharyngea ascendens	
Posterior (p. 493)	A. occipitalis	
	A. auricularis posterior	
Terminal (p. 494)	A. maxillaris	
	A. temporalis superficialis	

Fig. 32.13 Superficial neurovasculature of the head
Left lateral view.

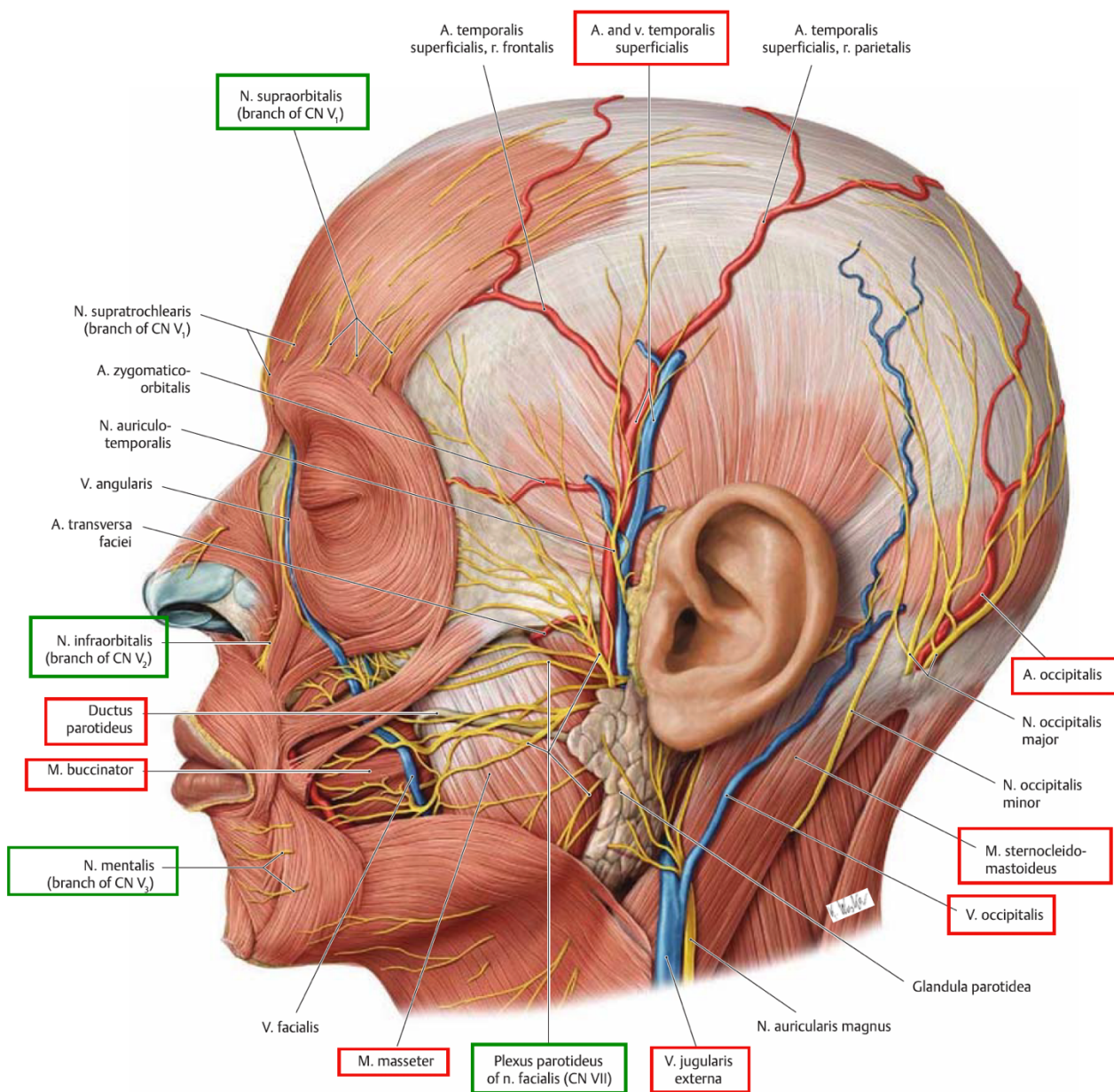


Fig. 30.2 Muscles of mastication (Musculi masticatorii)
Left lateral view.

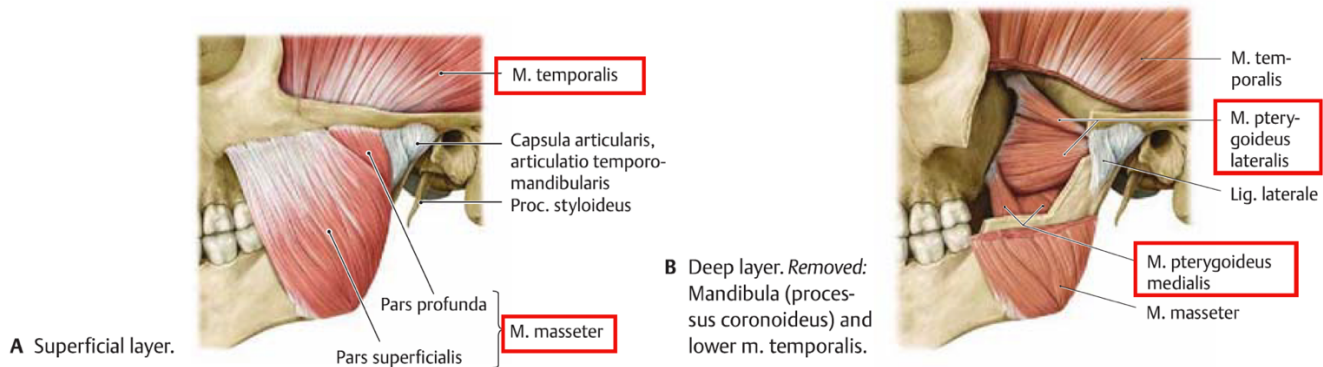
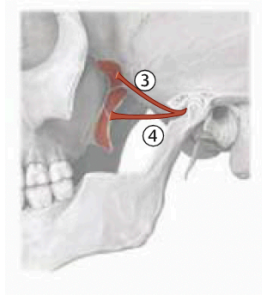
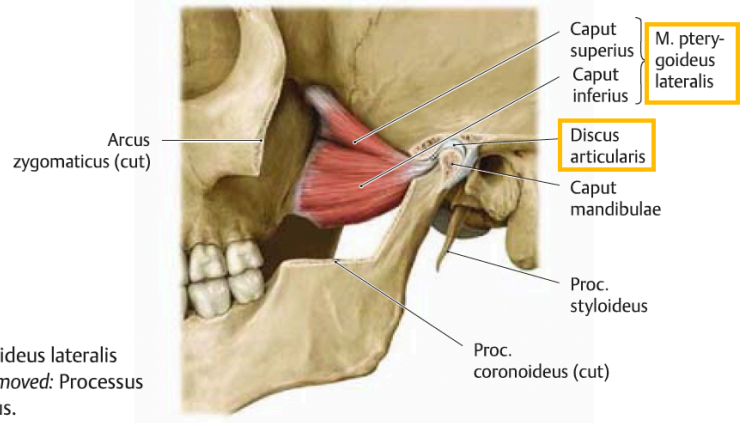


Fig. 30.13 M. pterygoideus lateralis
Left lateral view.

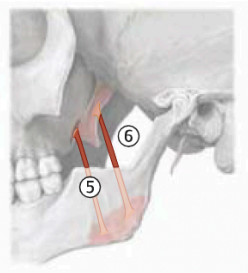


A Schematic.

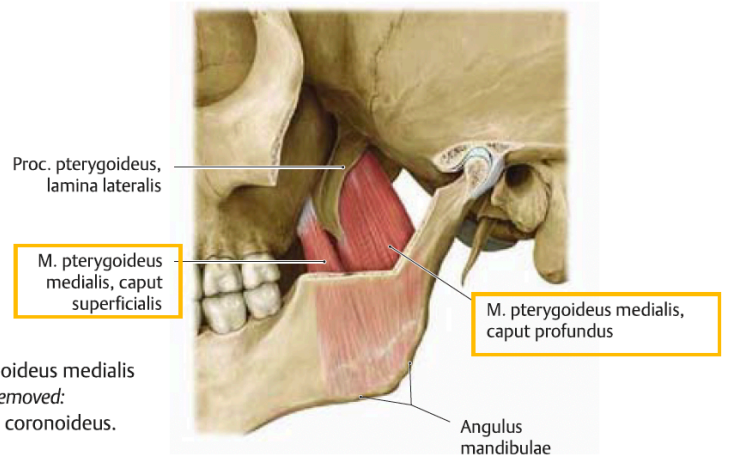


B M. pterygoideus lateralis sinister. *Removed:* Processus coronoideus.

Fig. 30.14 M. pterygoideus medialis
Left lateral view.

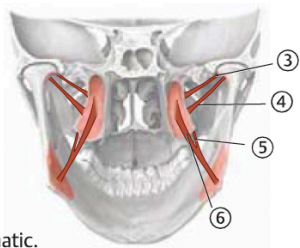


A Schematic.

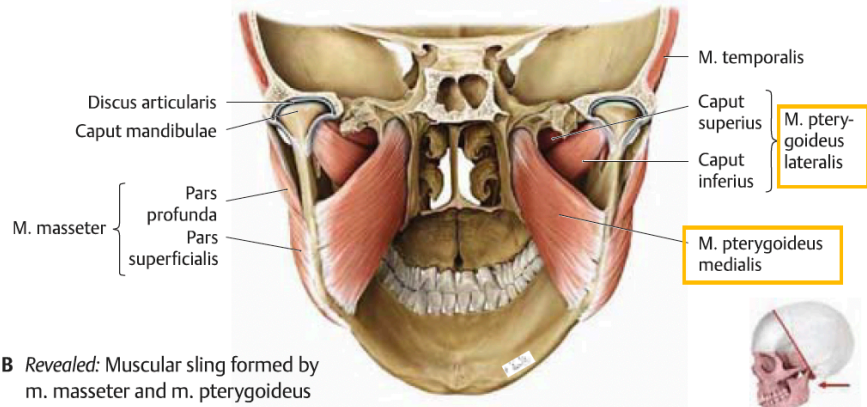


B M. pterygoideus medialis sinister. *Removed:* Processus coronoideus.

Fig. 30.15 Masticatory muscle sling
Oblique posterior view.



A Schematic.



B *Revealed:* Muscular sling formed by m. masseter and m. pterygoideus medialis that embed mandibula.