



ANATOMI BILDER INFÖR DISSEKTION

Arm och Ben

Sammanfattning

Detta dokument innehåller alla essentiella strukturer som finns med i dissektionsmanualen med bilder om hur strukturerna ligger relativt varandra och dess funktioner och innervation.

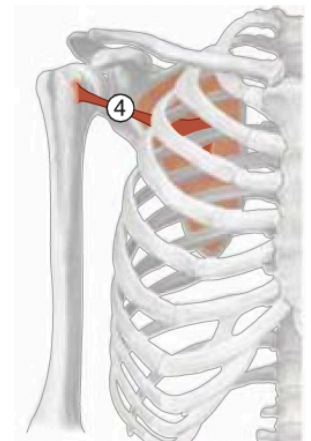
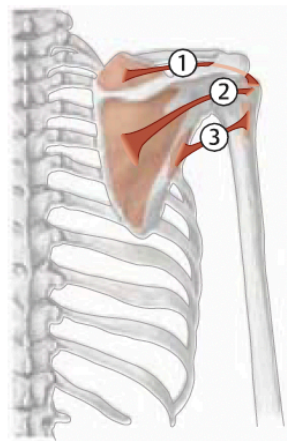
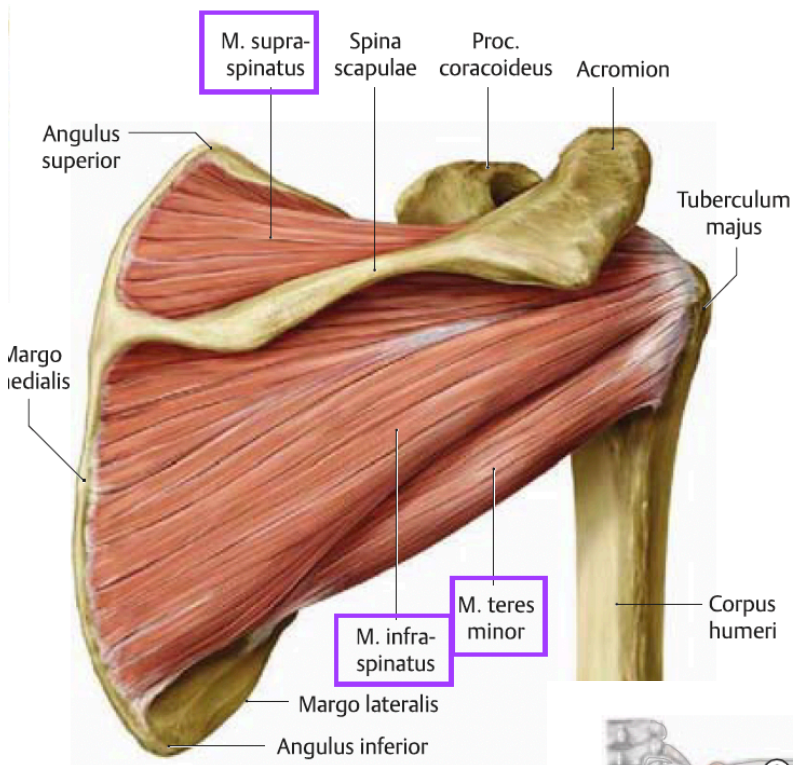
Shoutout till Paniz Baniadam för funktioner+innervation.

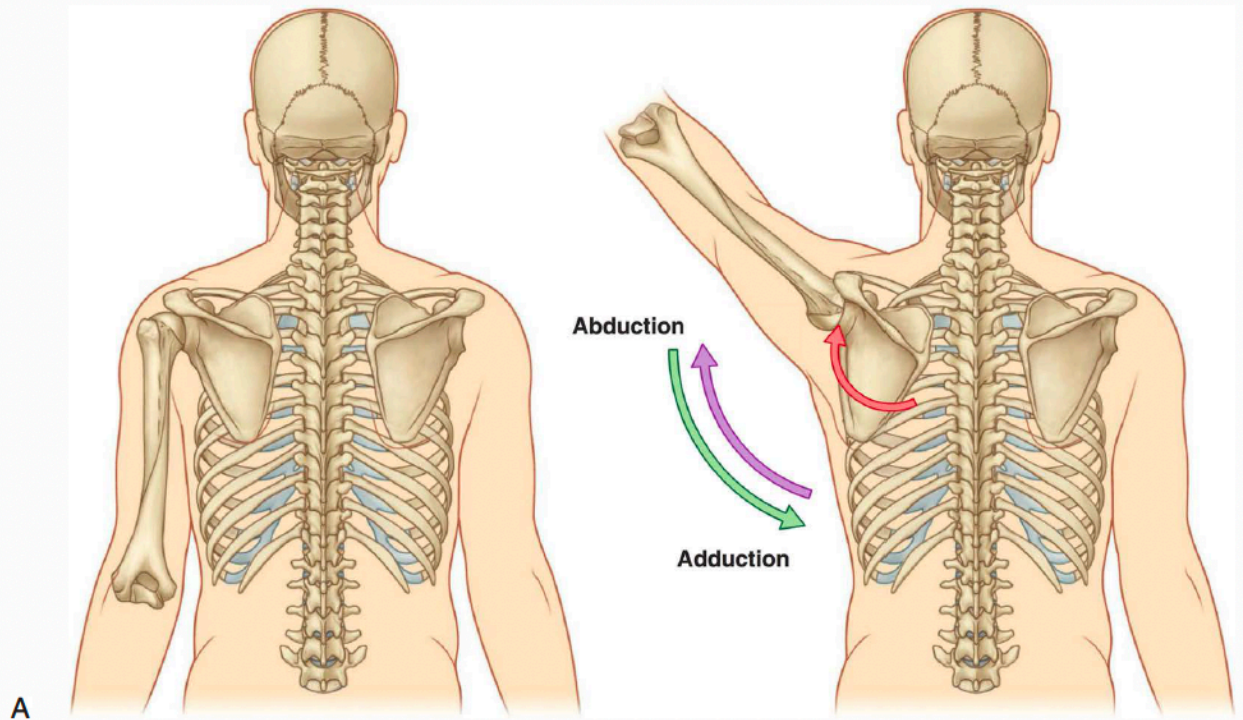
Fatemeh Taheri

Fatemeh.taheri@stud.ki.se

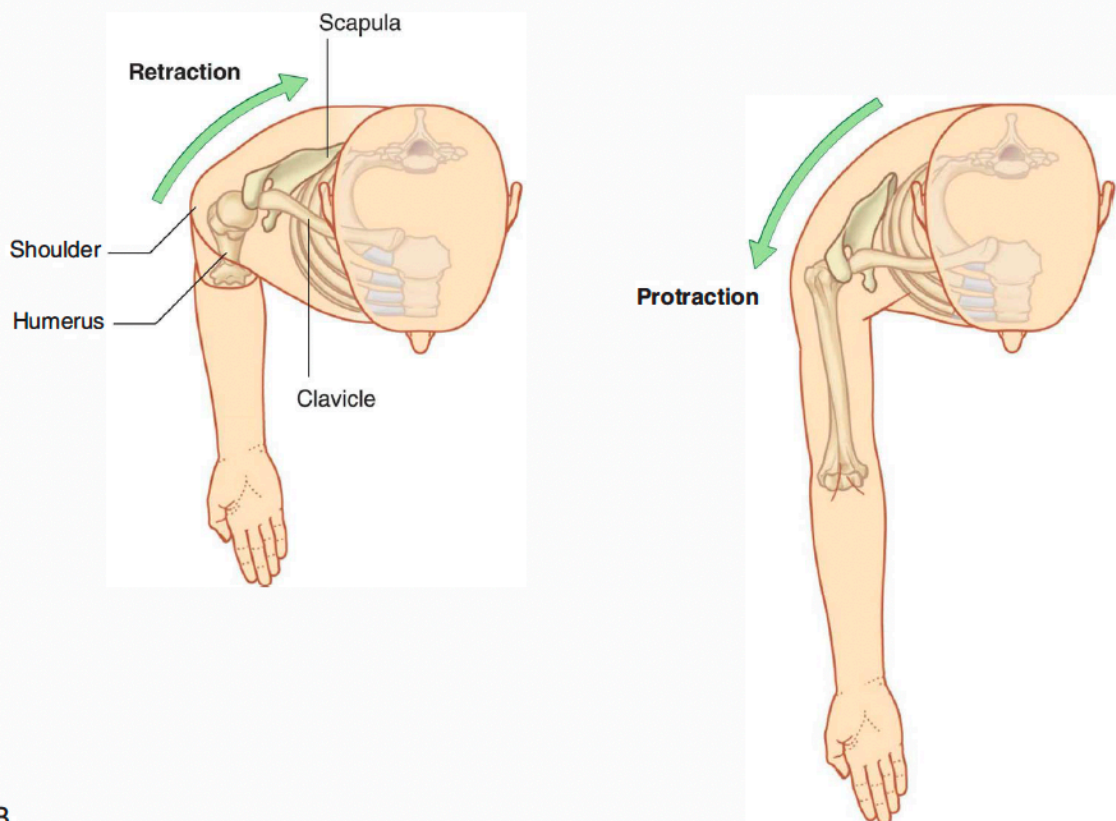
T	m. teres minor	utåttrotation	n. axillaris
I	m. infraspinatus	utåttrotation	n. suprascapularis
S	m. supraspinatus	abduktion	n. suprascapularis
S	m. subscapularis	inåttrotation	n. subscapularis

M. supraspinatus





A



B

Fig. 7.3 Movements of the scapula. **A.** Rotation. **B.** Protraction and retraction.

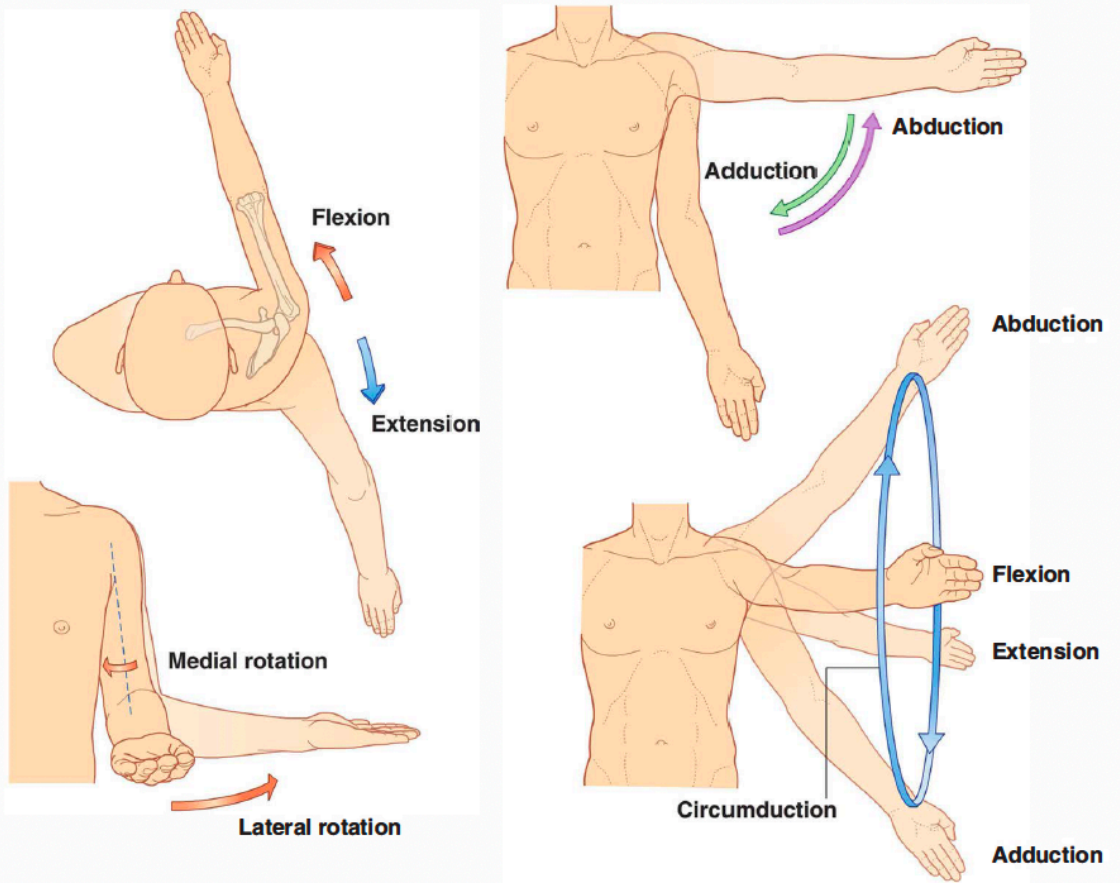


Fig. 7.4 Movements of the arm at the glenohumeral joint.

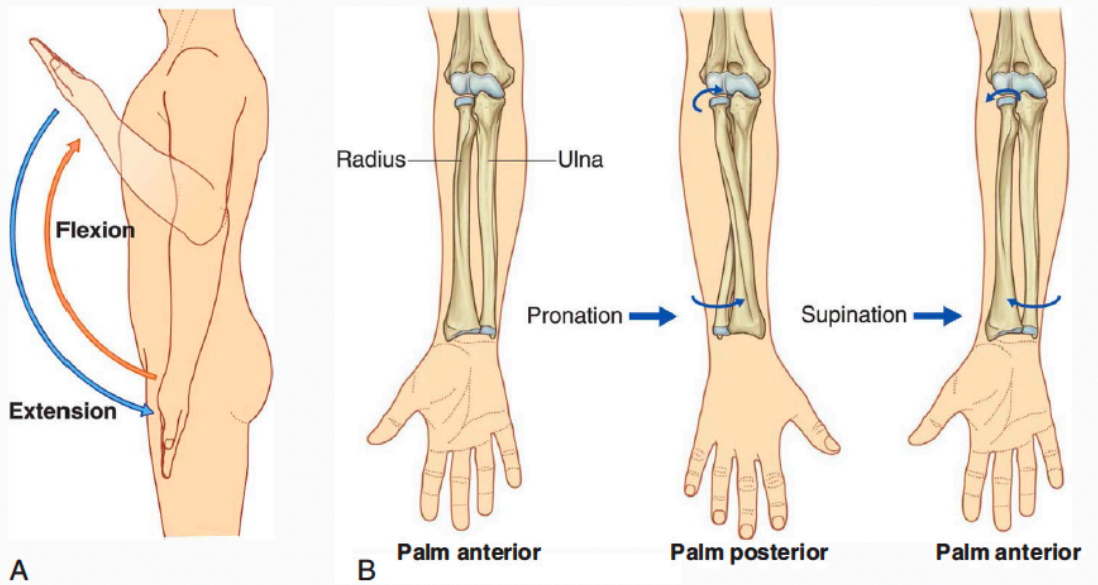


Fig. 7.5 Movements of the forearm. **A.** Flexion and extension at the elbow joint. **B.** Pronation and supination.

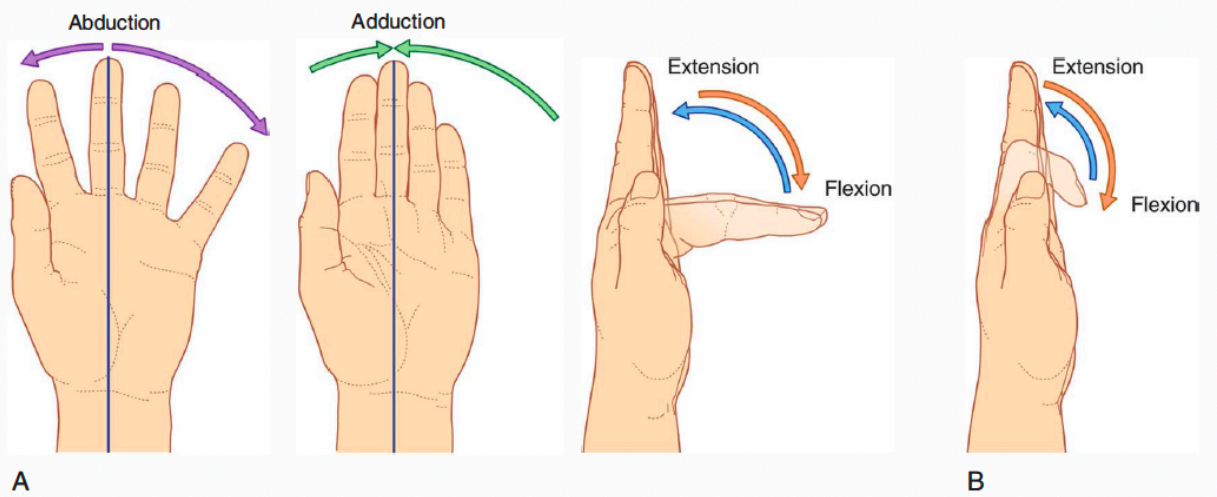
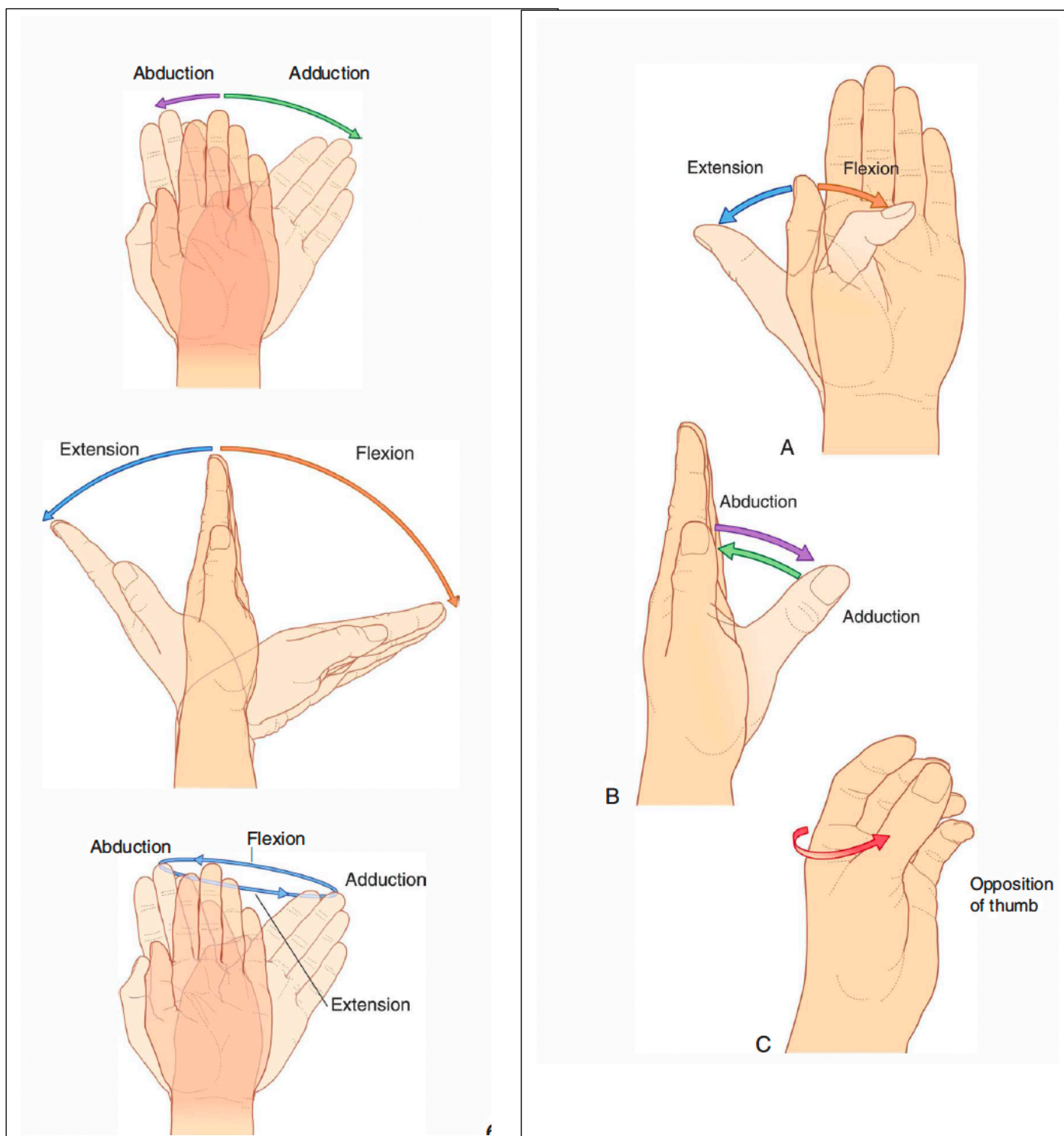
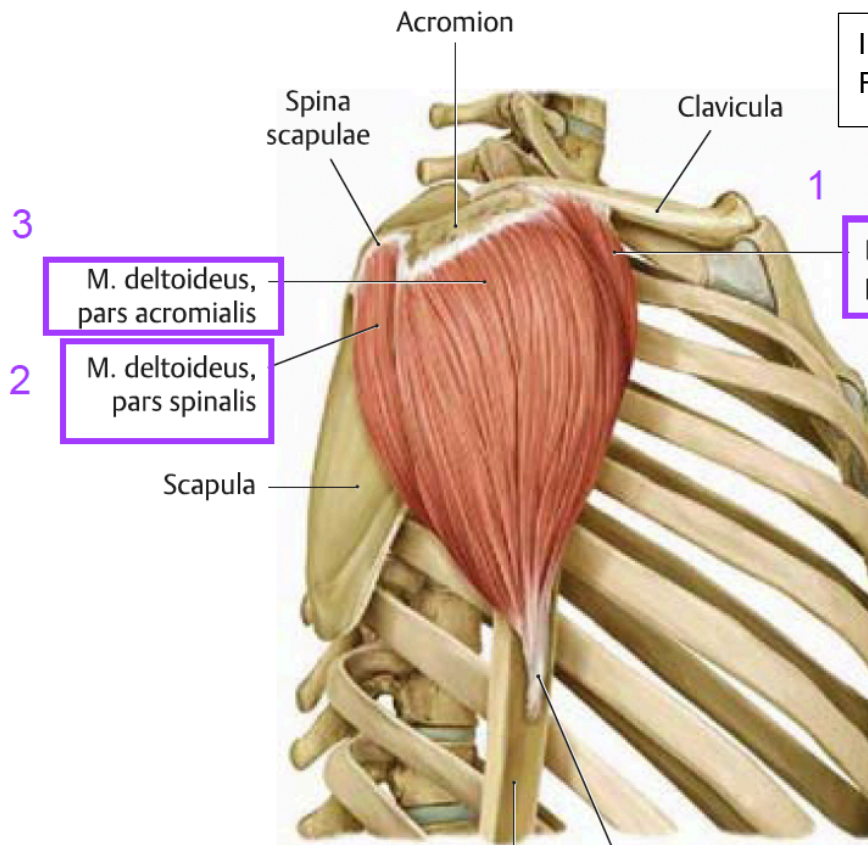


Fig. 7.8 Movements of the metacarpophalangeal (A) and interphalangeal (B) joints.



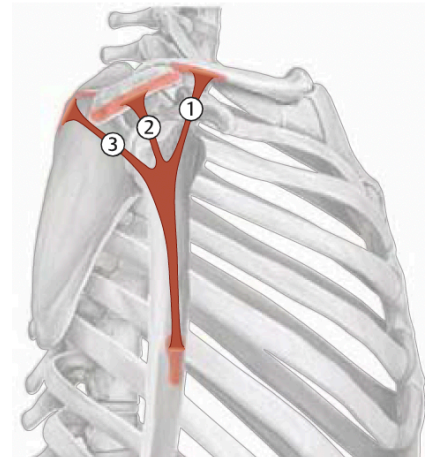


Innervas: n. axillaris
 Funktion: flexion i art. humeri

M. deltoideus, pars clavicularis

M. deltoideus, pars acromialis

M. deltoideus, pars spinalis

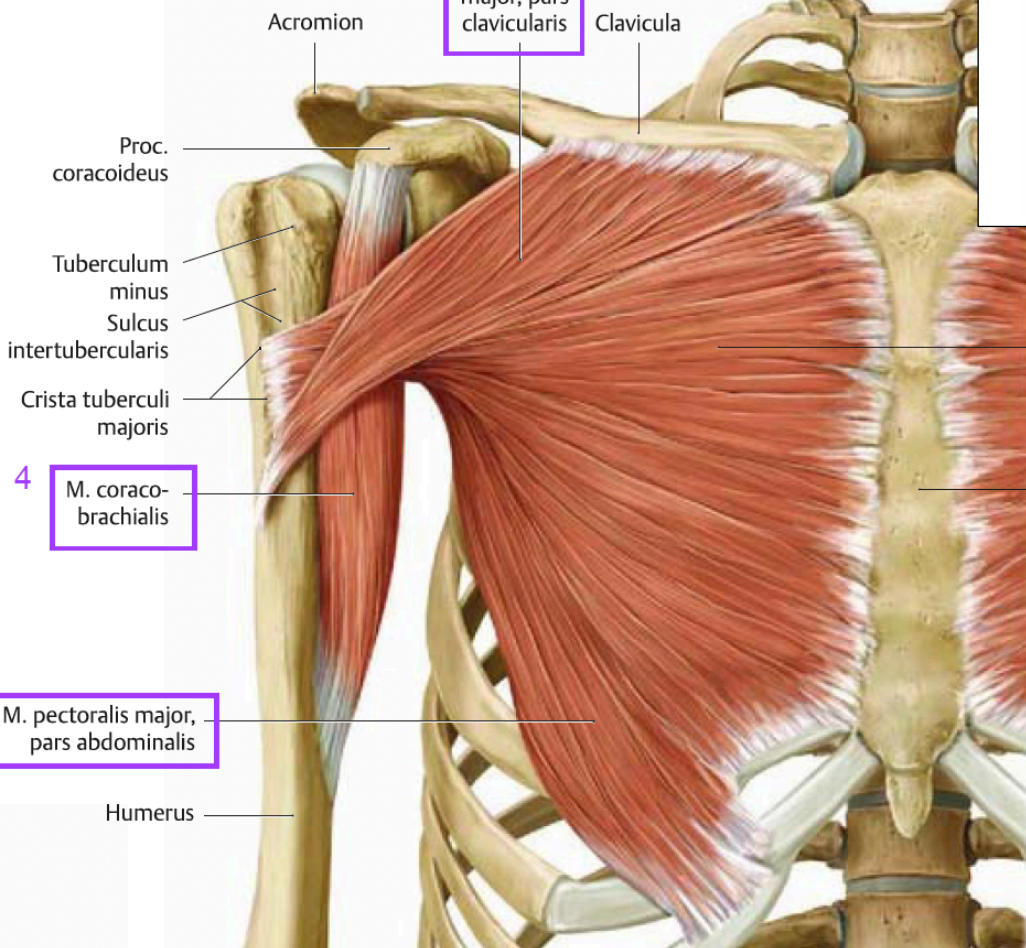
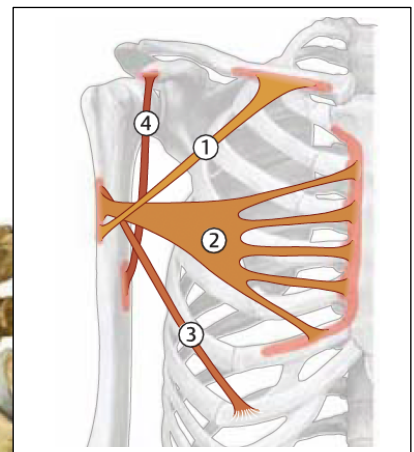


B Right lateral view.

m. coracobrachialis
 nerv: n. musculocutaneus
 Funktion: flexion i art. humeri

Corpus humeri
 Tuberositas deltoidea
 1

M. pectoralis major, pars clavicularis



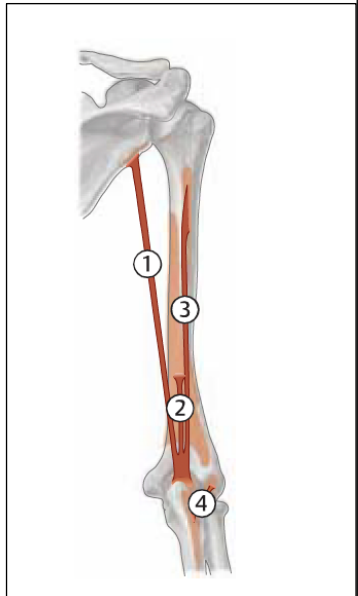
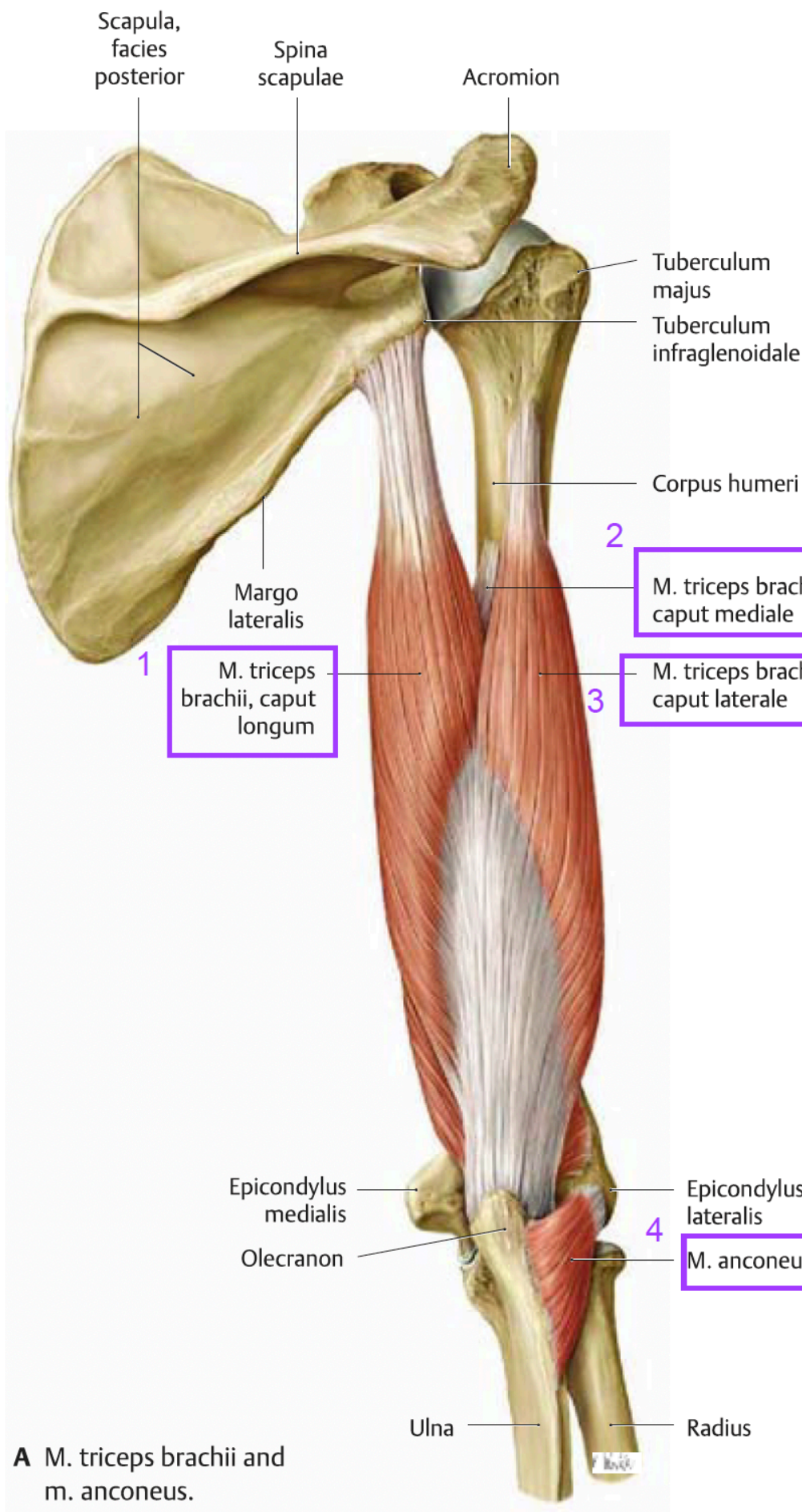
M. pectoralis major, pars sternocostalis

Sternum

M. coraco-brachialis

M. pectoralis major, pars abdominalis

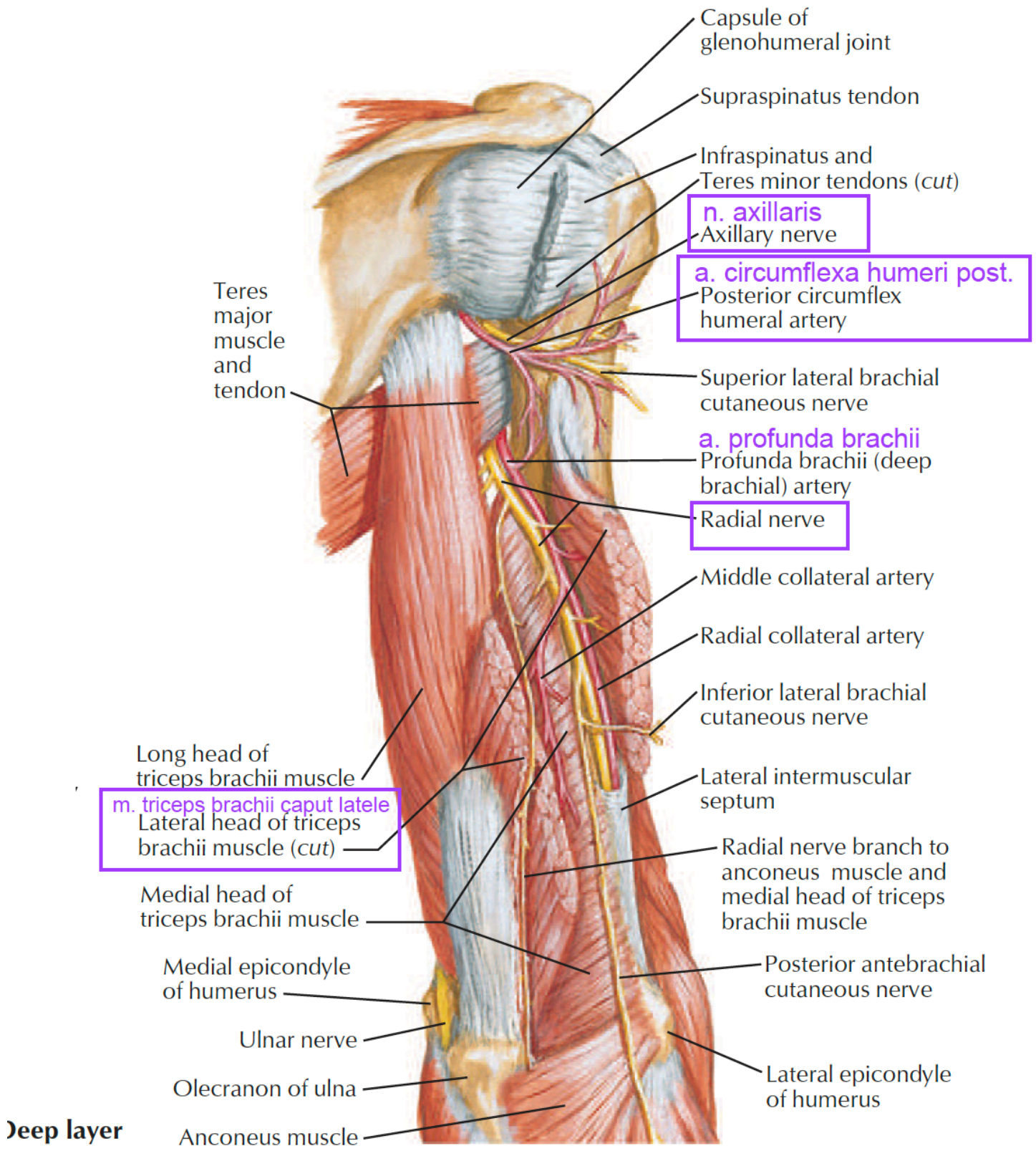
Humerus



Innervas av
n. radialis

Funktion:
Extension i art.
humeri

A M. triceps brachii and
m. anconeus.



Deep layer

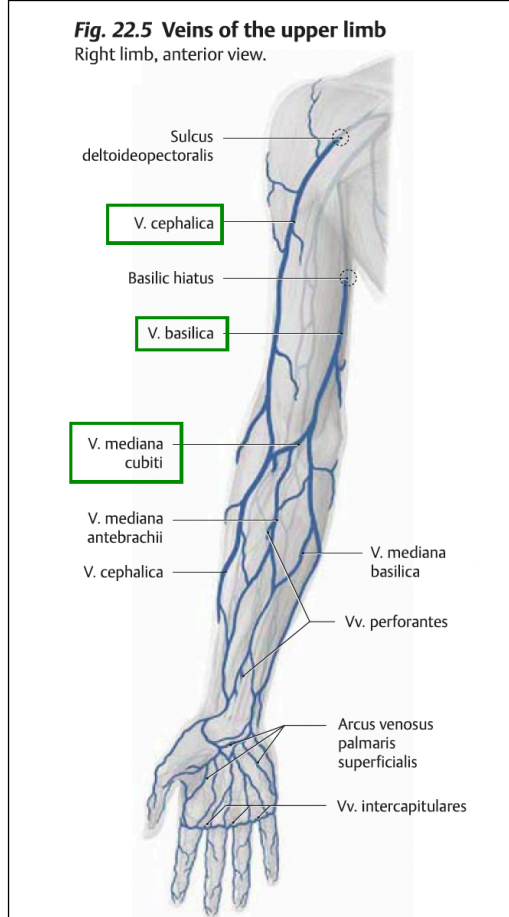
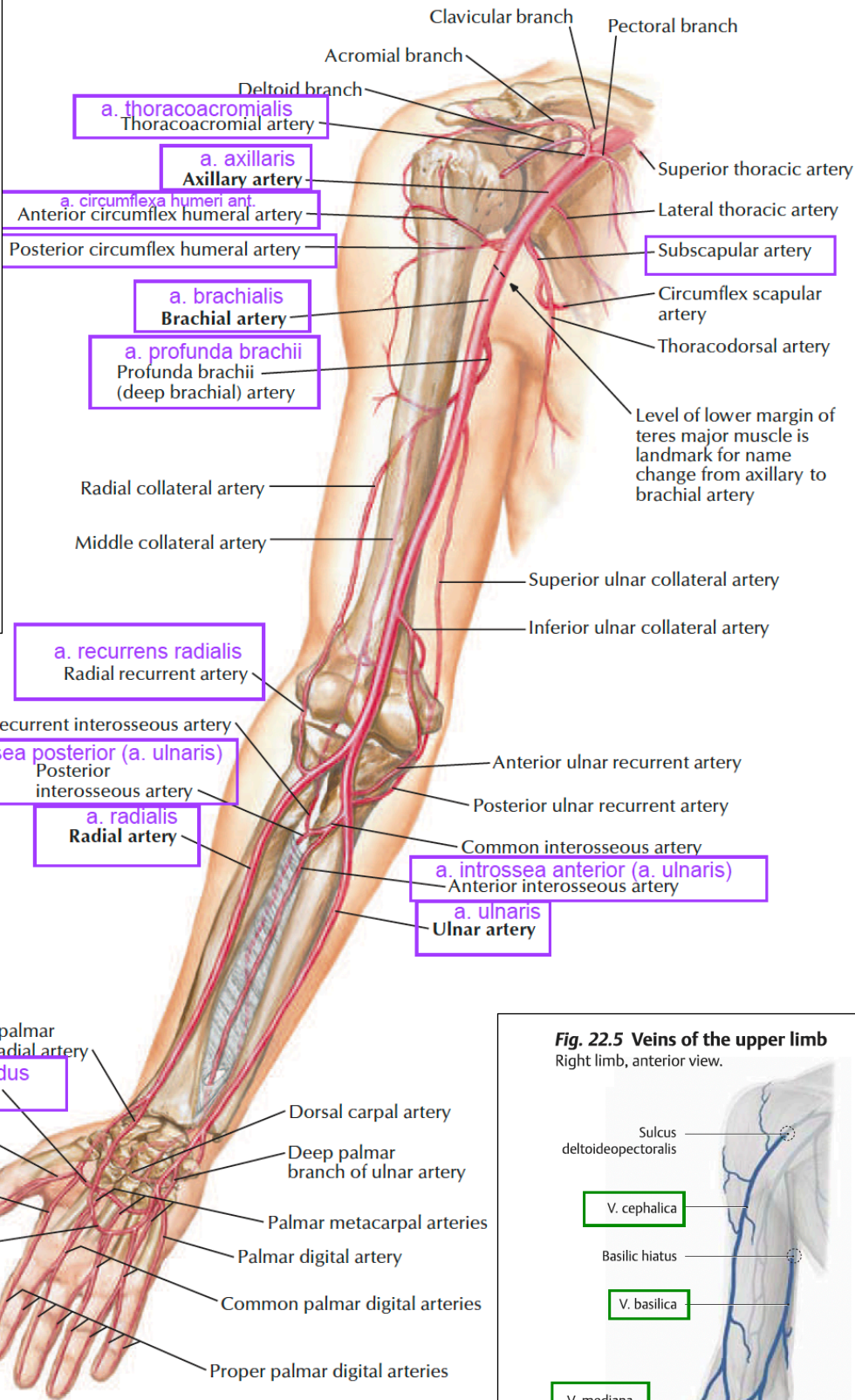
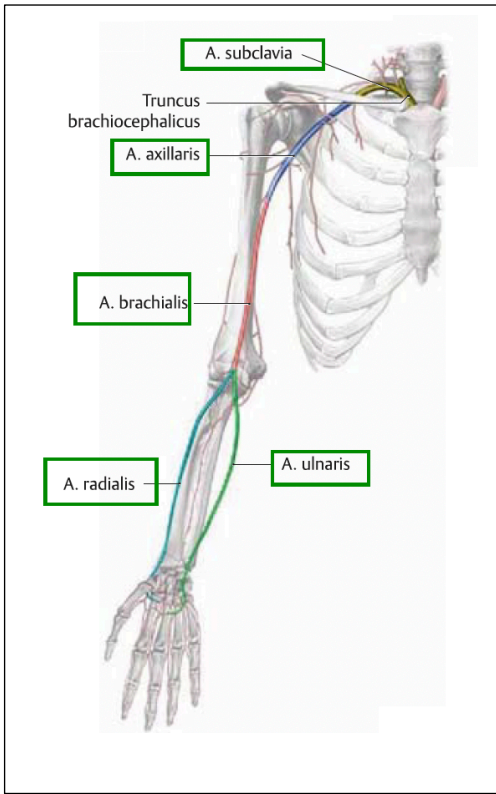
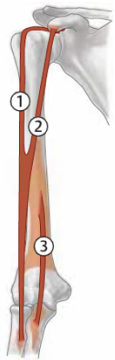
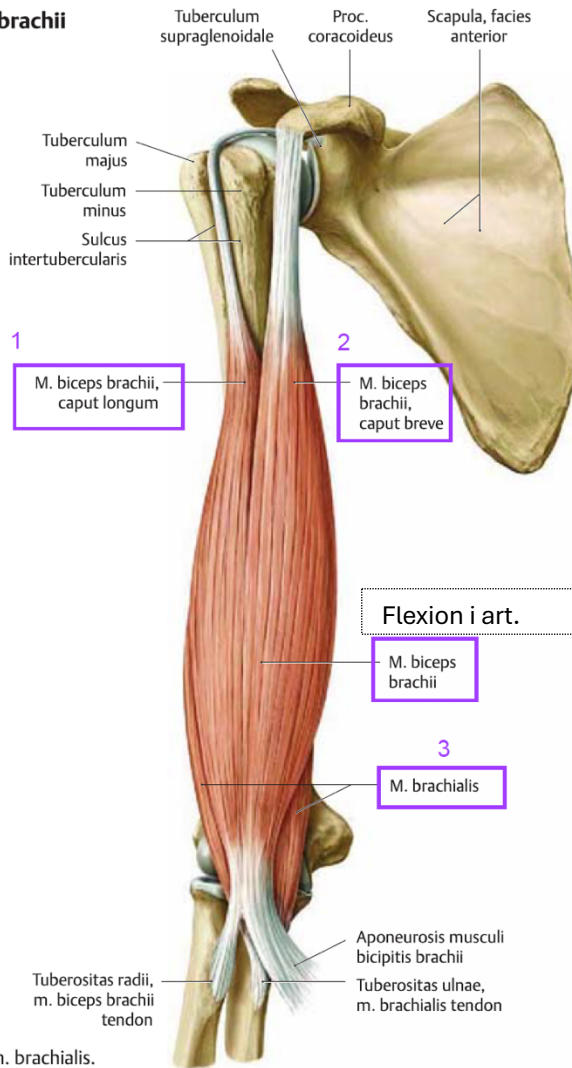


Fig. 19.31 M. biceps brachii and m. brachialis

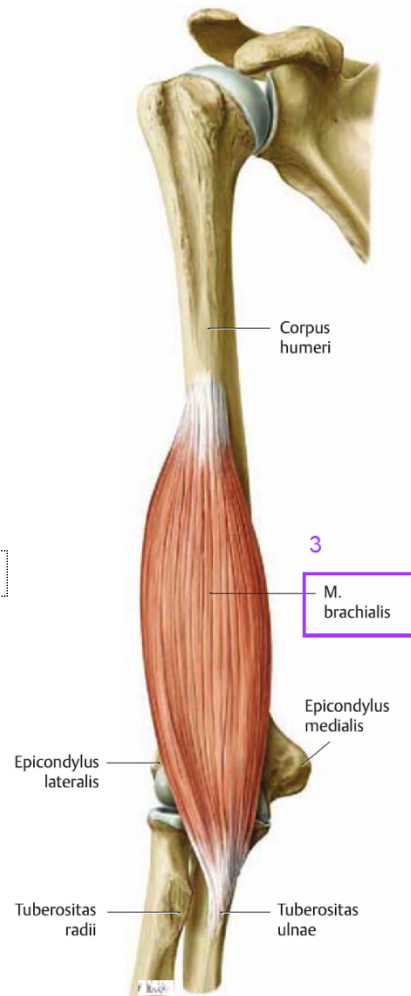
Right arm, anterior view.



A Schematic.



B M. biceps brachii and m. brachialis.



C M. brachialis.

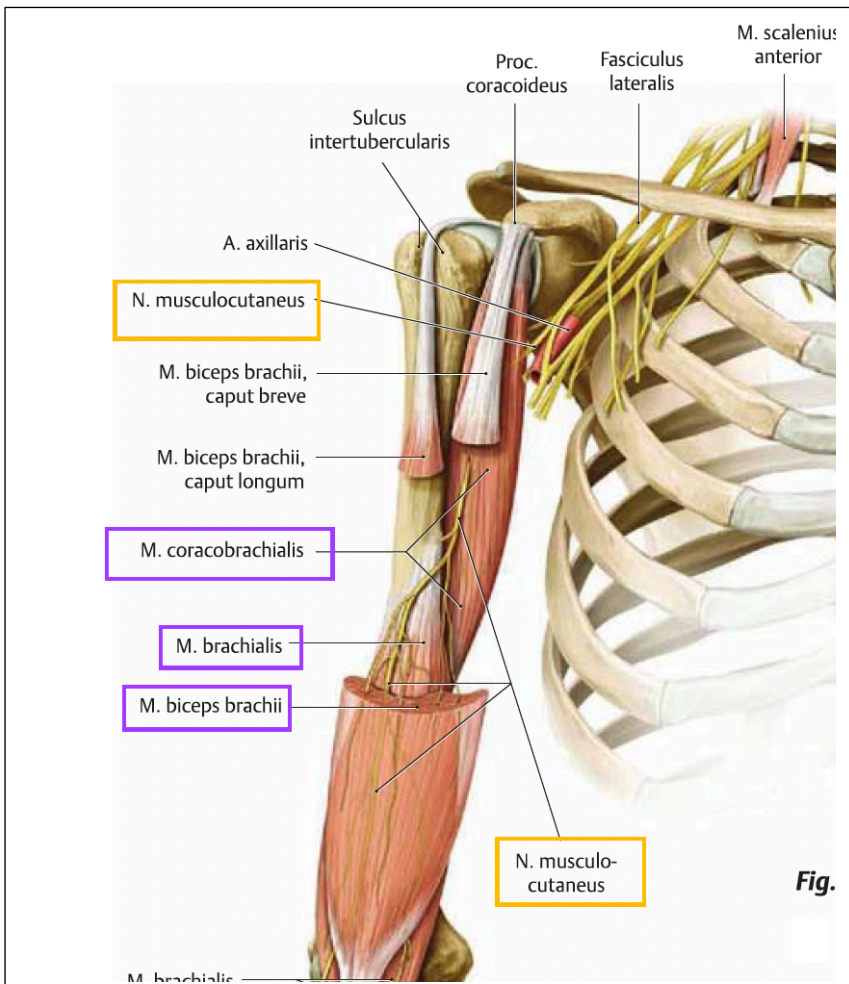
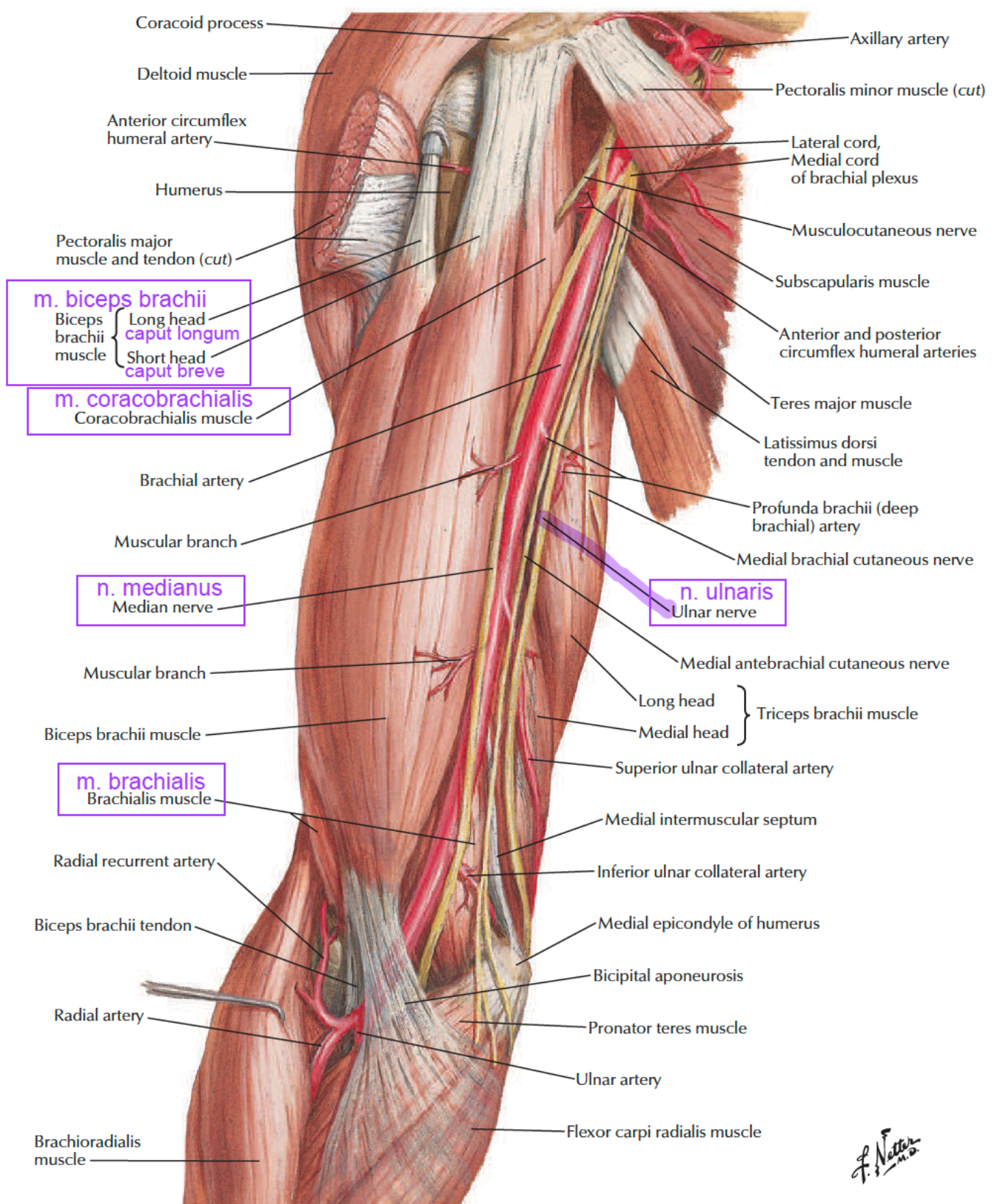


Fig.

Nerv: n. musculocutaneus
 Funktion: Flexion i art. Cubiti
 (alla förutom m. coracobrachialis som har flexion i art. humeri)



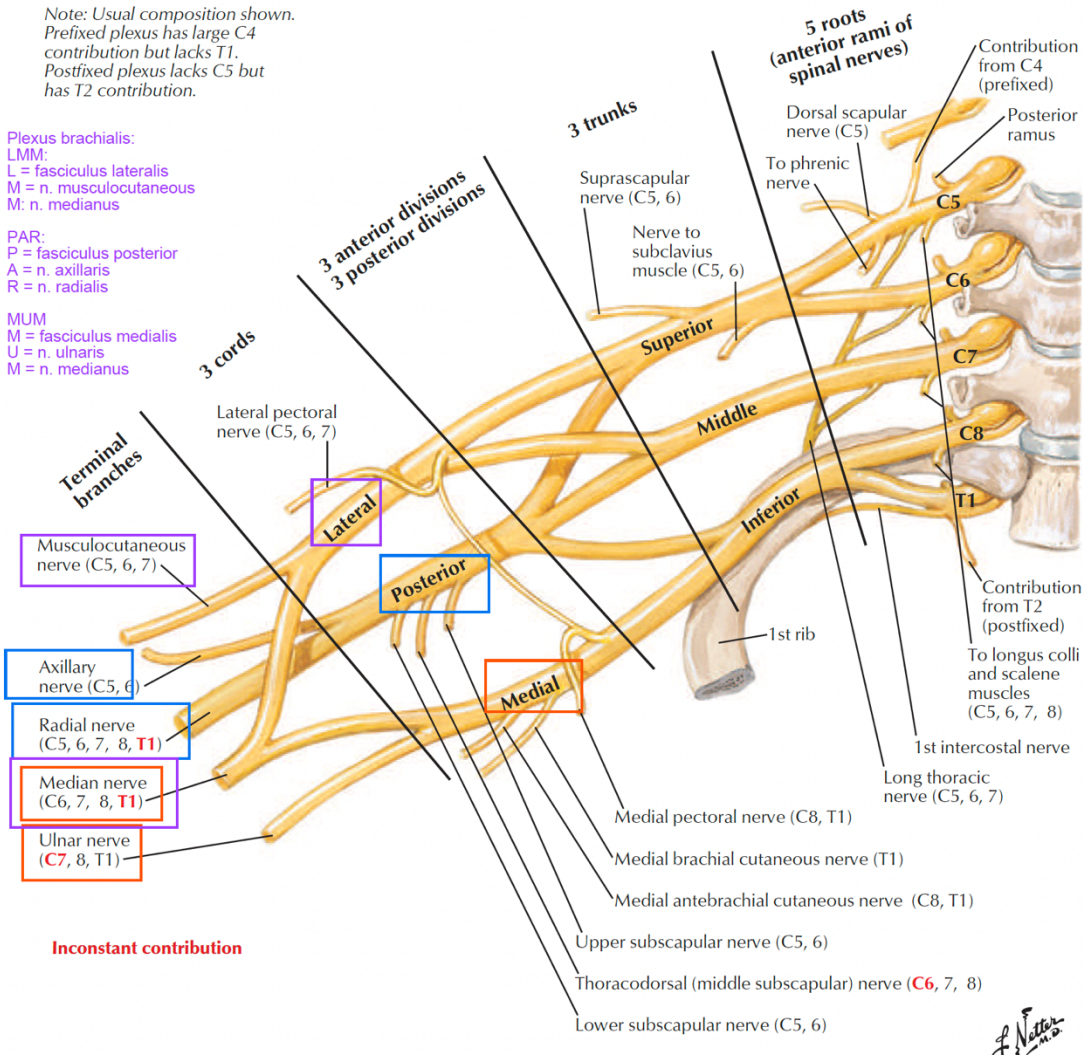
F. Netter M.D.

Note: Usual composition shown.
 Prefixed plexus has large C4 contribution but lacks T1.
 Postfixed plexus lacks C5 but has T2 contribution.

Plexus brachialis:
 LMM:
 L = fasciculus lateralis
 M = n. musculocutaneus
 M: n. medianus

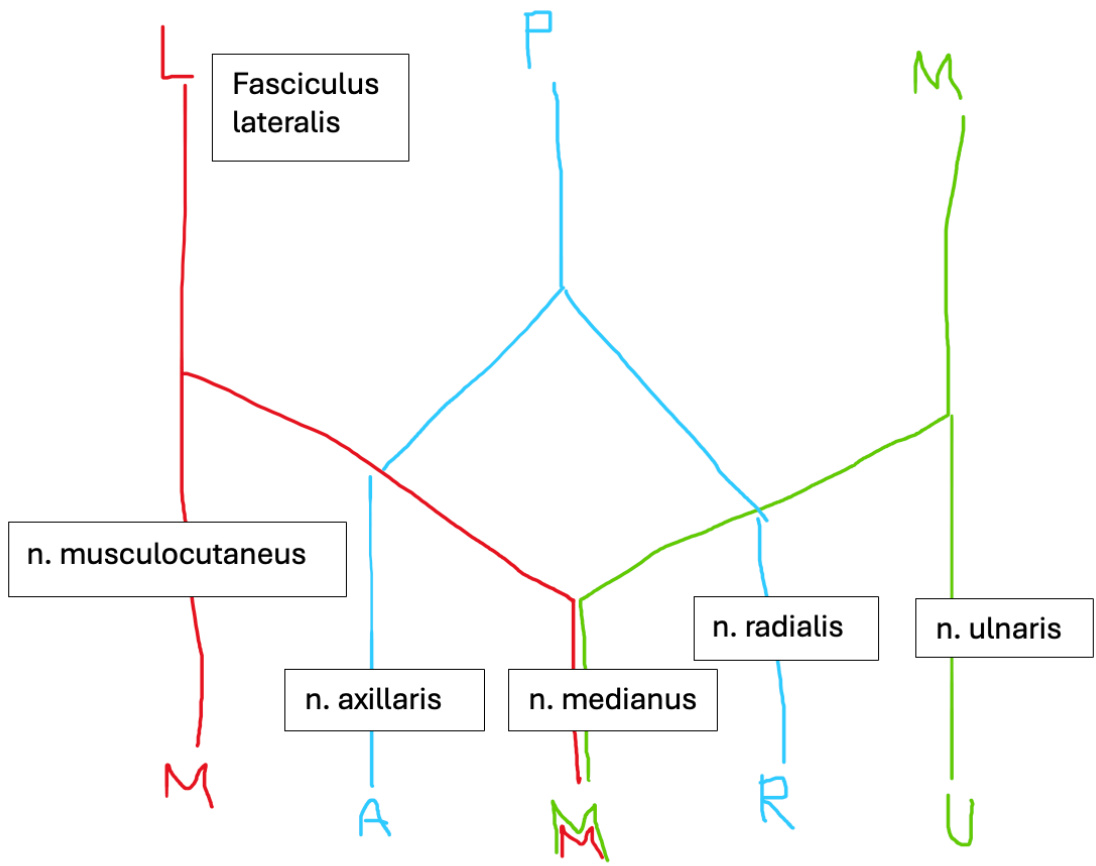
PAR:
 P = fasciculus posterior
 A = n. axillaris
 R = n. radialis

MUM:
 M = fasciculus medialis
 U = n. ulnaris
 M = n. medianus

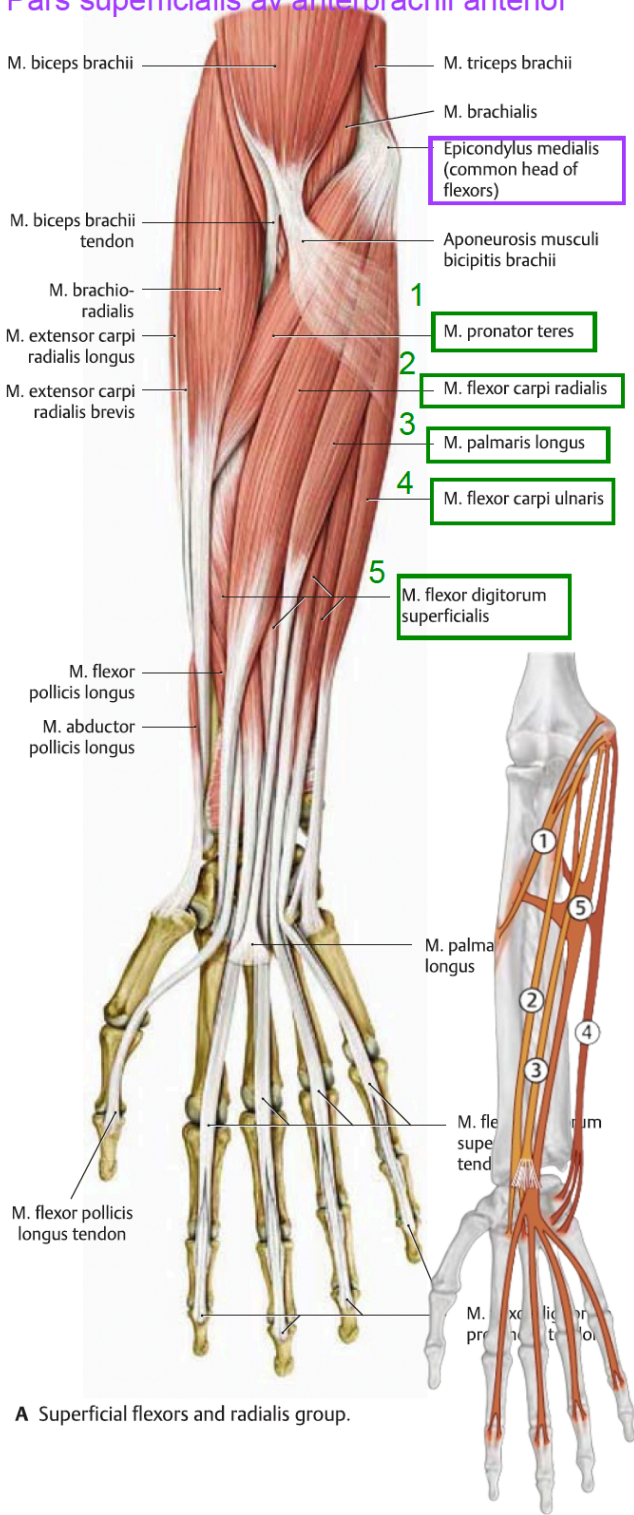


Inconstant contribution

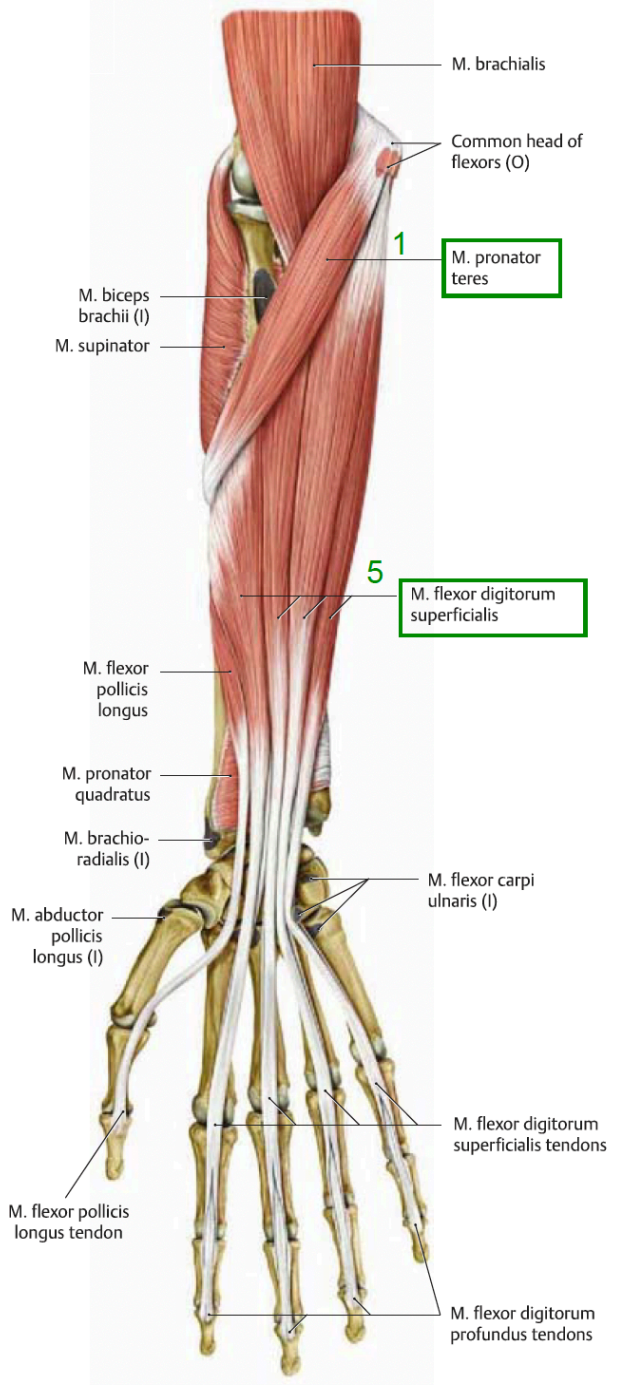
F. Netter



Pars superficialis av anterbrachii anterior



A Superficial flexors and radialis group.



B Removed: Radialis group (m. brachioradialis, m. extensor carpi radialis longus, and m. extensor carpi radialis brevis), m. flexor carpi radialis, m. flexor carpi ulnaris, m. abductor pollicis longus, m. palmaris longus, and m. biceps brachii.

Antebrachium - Flexor

Superficialis: faster på mediala epikondylen

Pass - m. pronator teres - flexion art. cubiti

Fail - m. flexor carpi radialis

Pass - m. palmaris longus

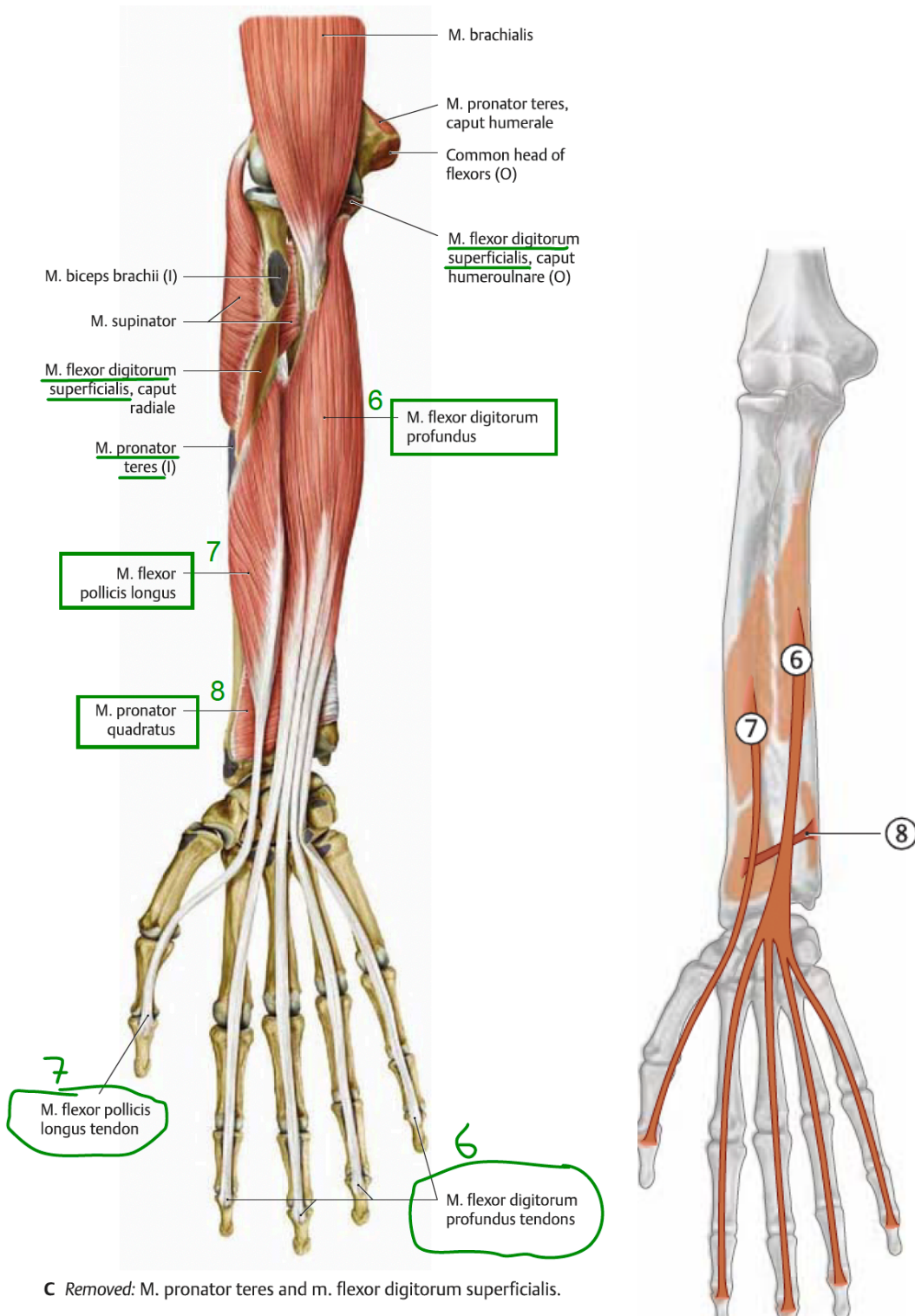
Fail - m. flexor carpi ulnaris - n. ulnaris

n. medianus

flexion art. radiocarpæa

Intermedialis: innerveras av n. medianus

Superfail - m. flexor digitorum superficialis - flexion i PIP

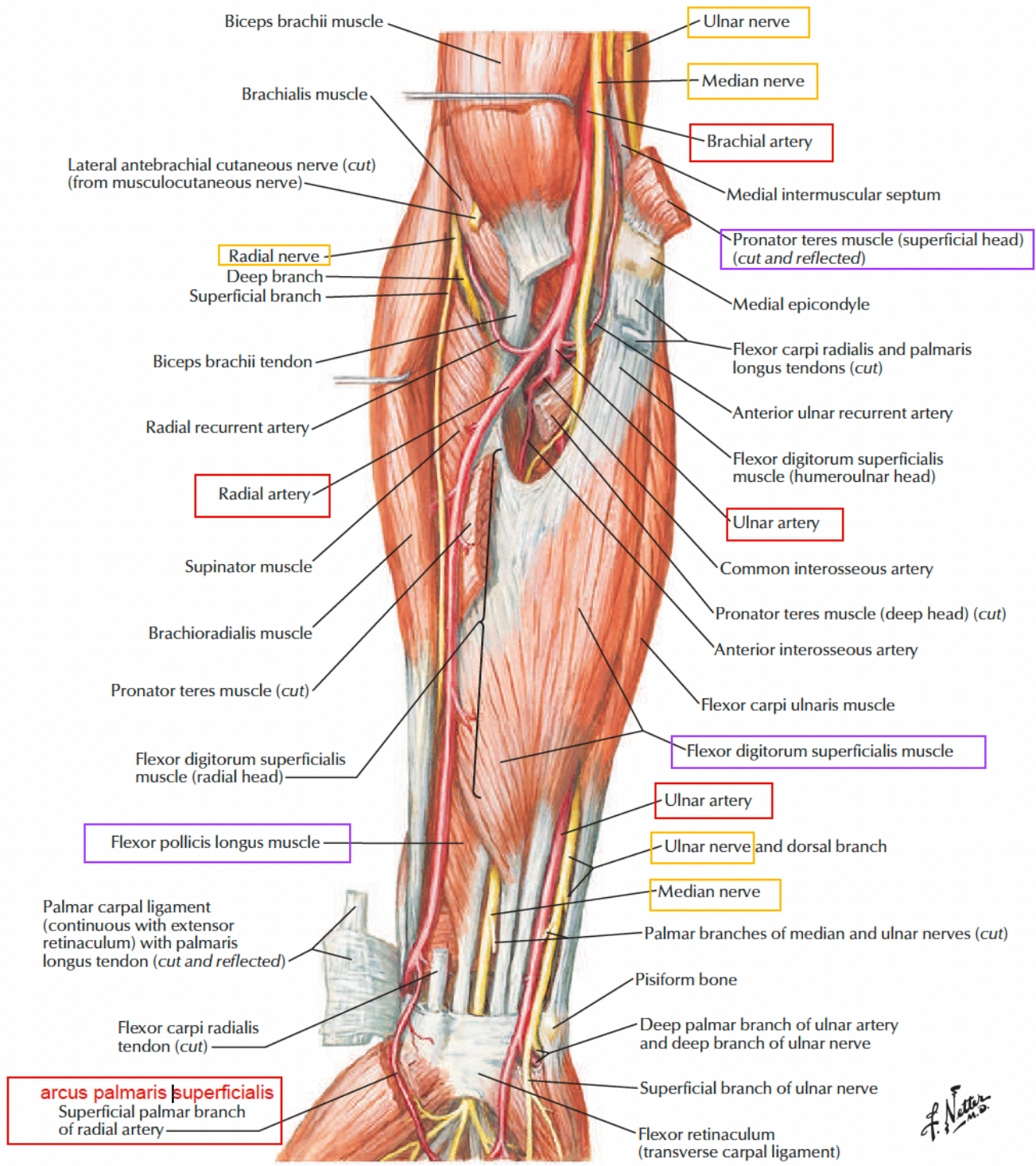


Profundus: innervated by n. medianus

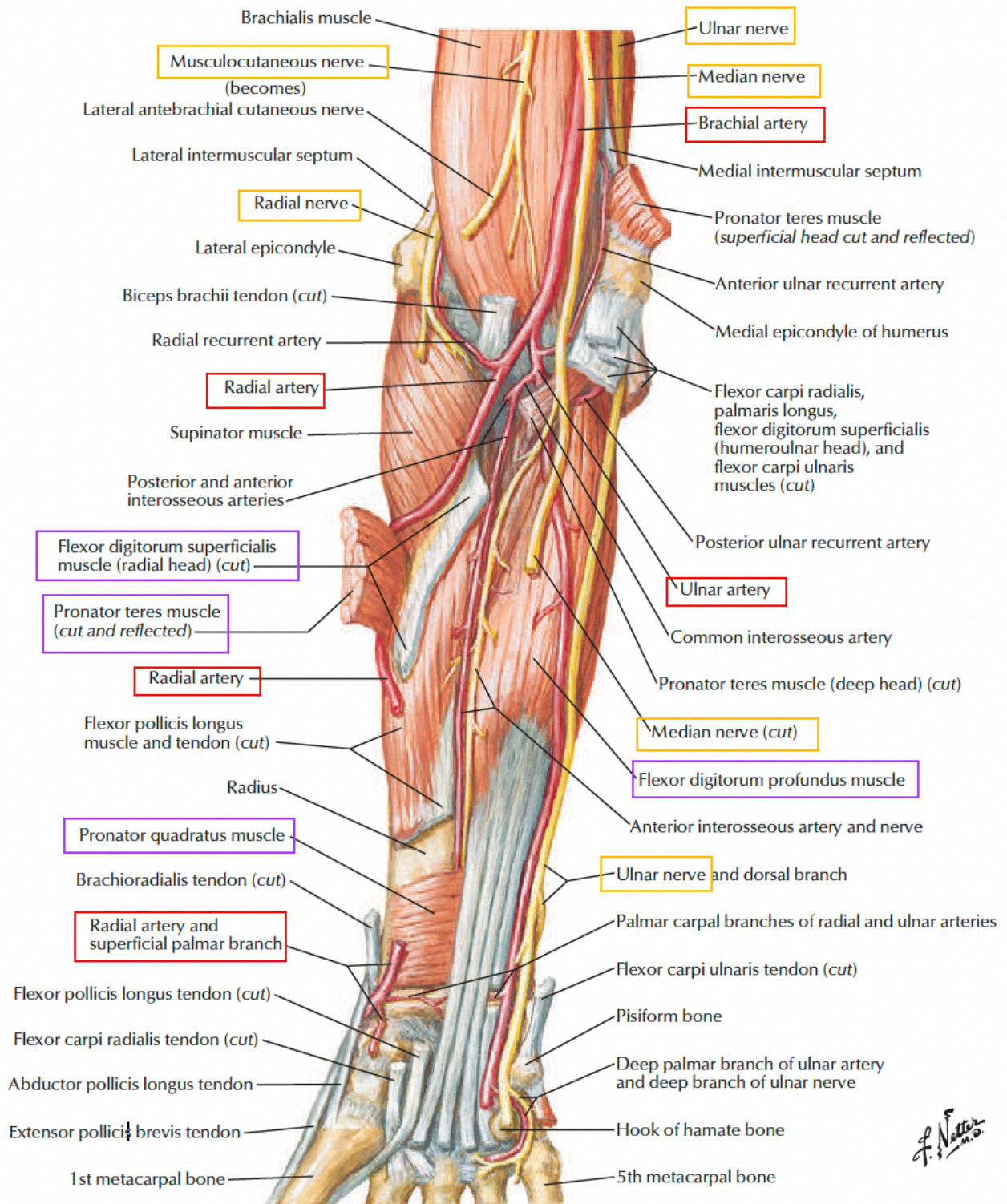
Polisen - m. flexor pollicis longus - flexion: MCP

Diggar - m. flexor digitorum profundus - flexion: DIP
medial

kvadranten - m. pronator quadratus - pronation av art. radioulnaris

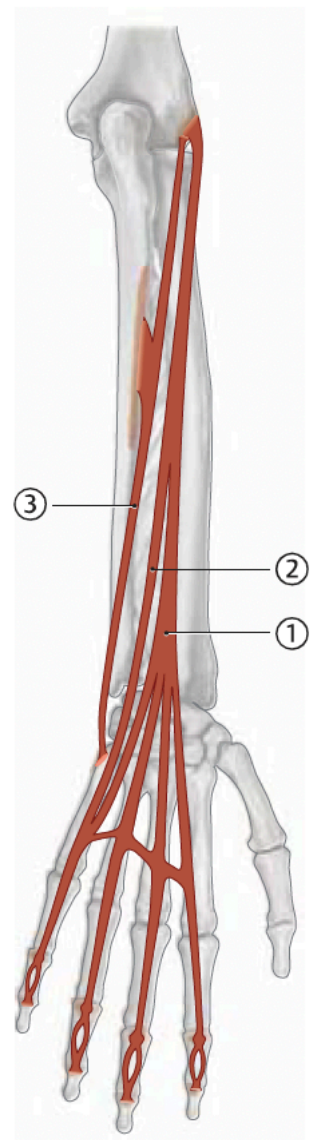
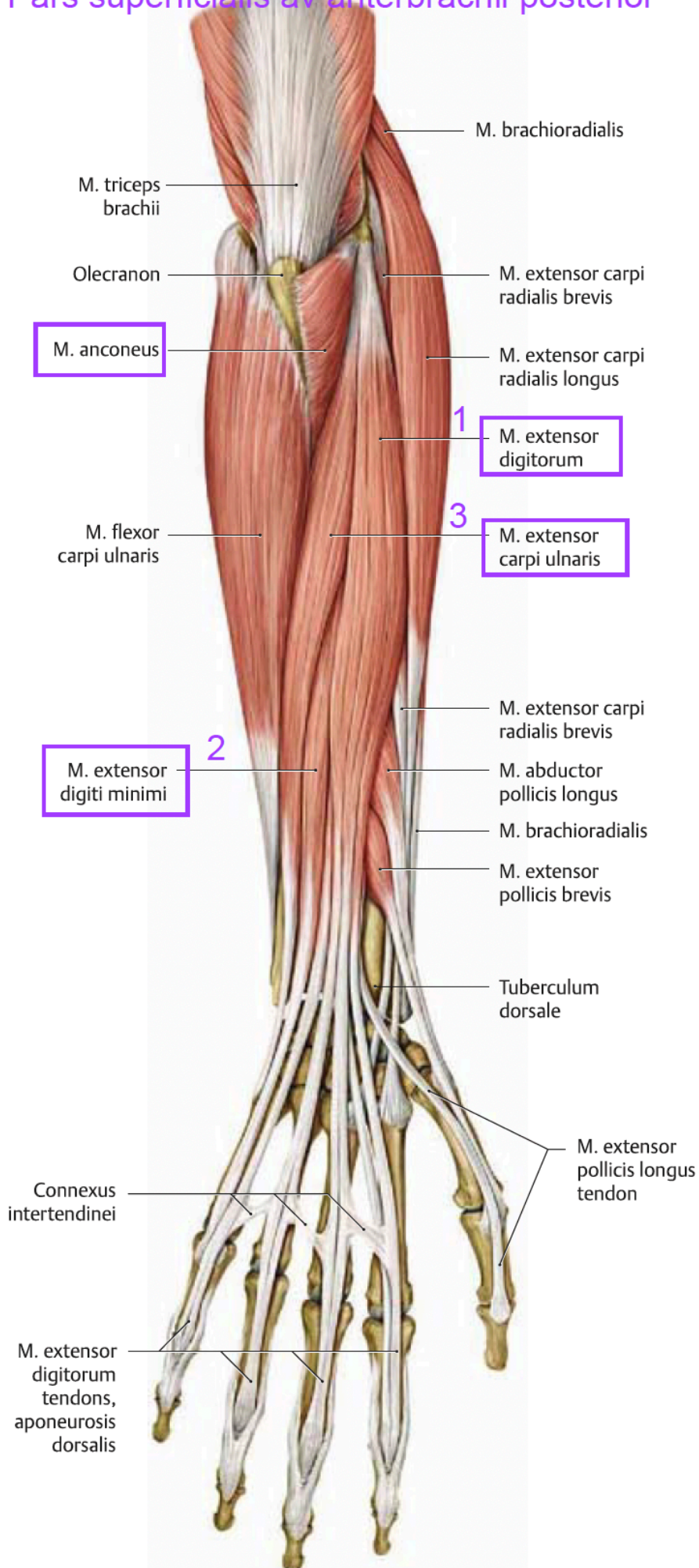


F. Netter M.D.

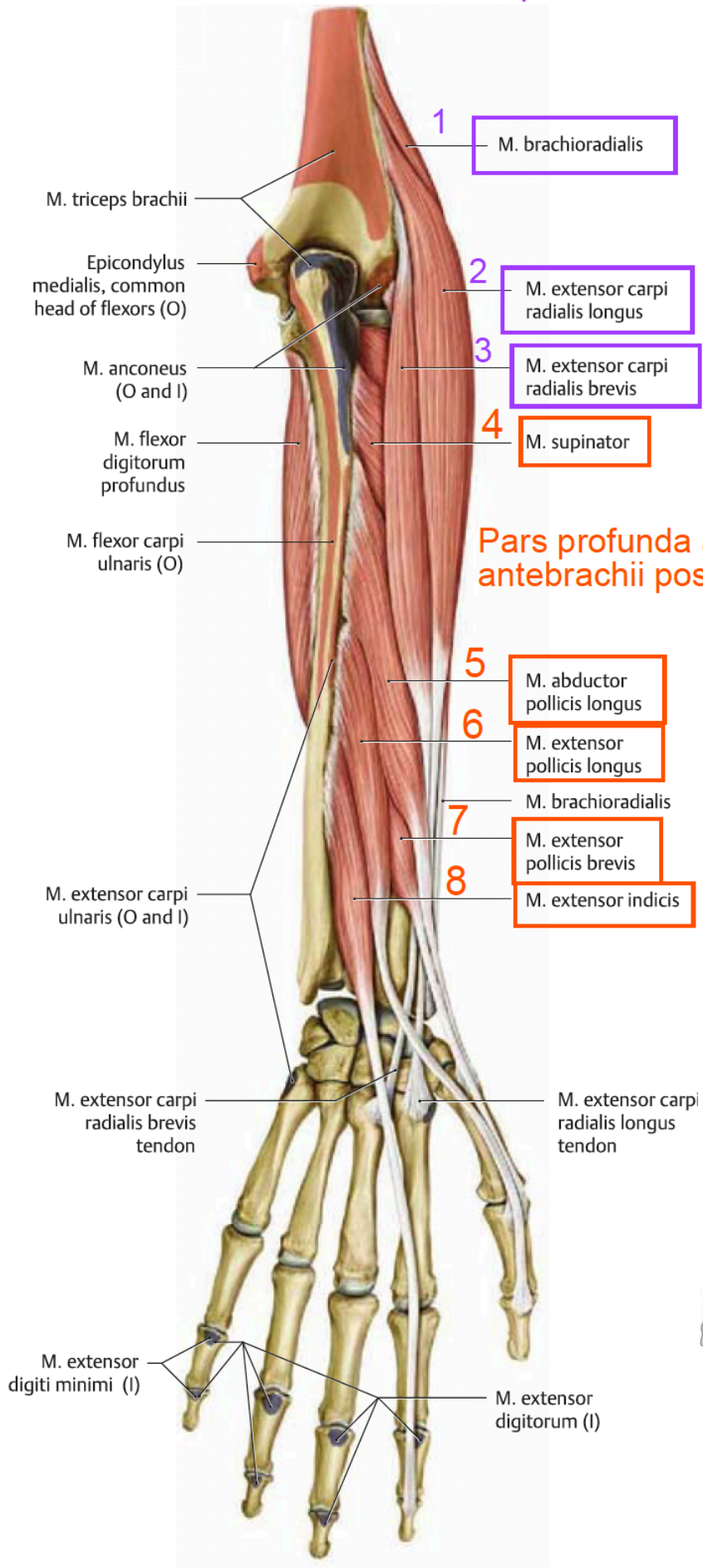


F. Netter M.D.

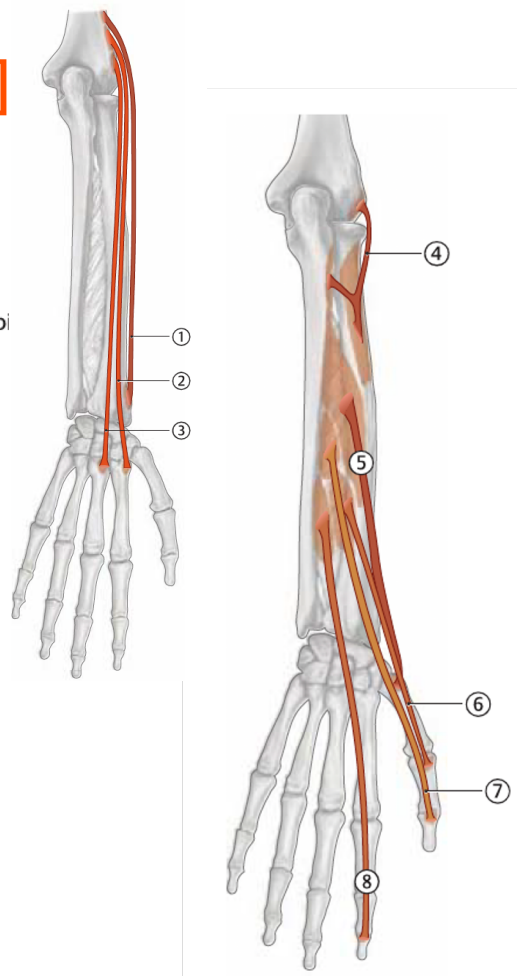
Pars superficialis av anterbrachii posterior



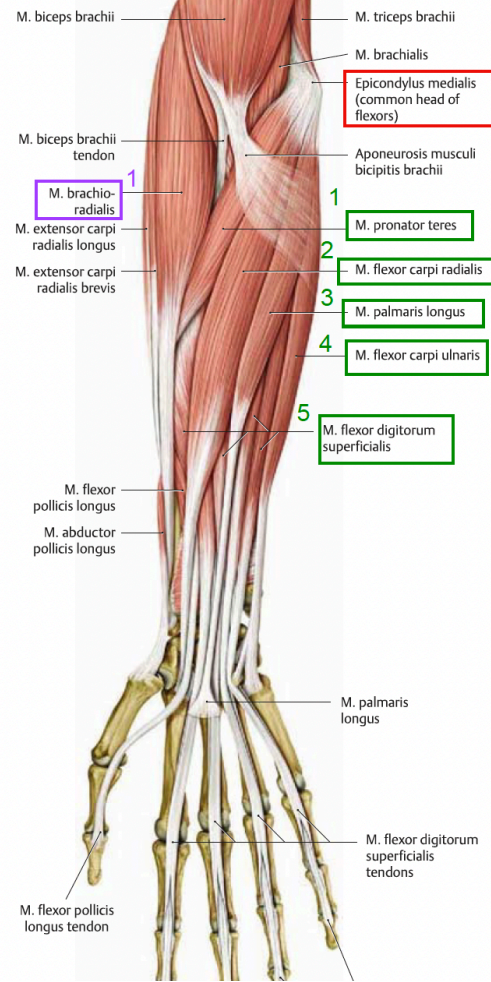
Pars lateralis av antebrachii posterior



Pars profunda av antebrachii posterior



Pars superficialis av antebrachii anterior



B Removed: M. triceps brachii, m. anconeus, m. flexor carpi ulnaris, m. extensor carpi ulnaris, and m. extensor digitorum.

Antebrachium - Extensorer - innerveras av n. radialis

Superficialis:

Fäster sig på laterala epikondylen:

Bra - m. brachioradialis - flexion i art. cubiti

Lång - m. extensor carpi radialis longus } extension i art. radiocarpæa
 Kort - m. extensor carpi radialis brevis

Digga - m. extensor digitorum

Min - m. extensor digiti minimi

Ulna - m. extensor carpi ulnaris

Profundus: (lateralt till medialt)

Superande

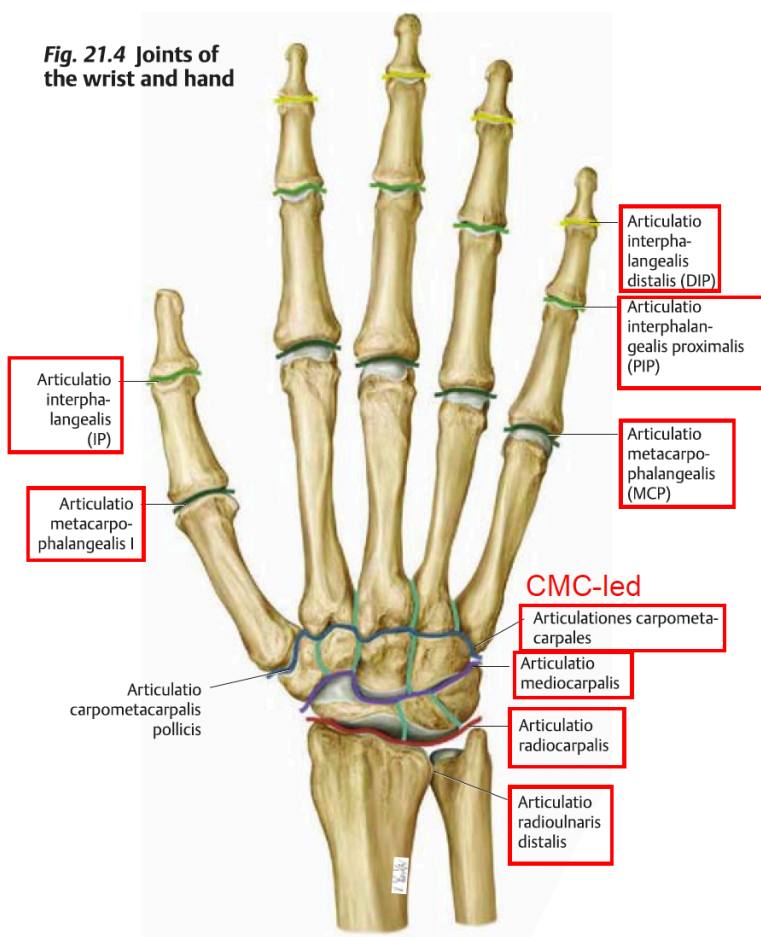
Surprise! - m. supinator - supination art radioulnaris

Pollicismuskeln:
 Abduktor
 Lång - m. abductor pollicis longus - abduktion i CMC
 Bredvid
 Kort - m. extensor pollicis brevis } extension i MCP I
 Långa
 Lång - m. extensor pollicis longus

Indier

Där är den! - m. extensor indicis - extension i MCP II

Fig. 21.4 Joints of the wrist and hand



A Joints of the wrist and hand. Right hand, posterior (dorsal) view.

Thenar muskler

Hypothenar muskler

Lig. metacarpale transversum profundum

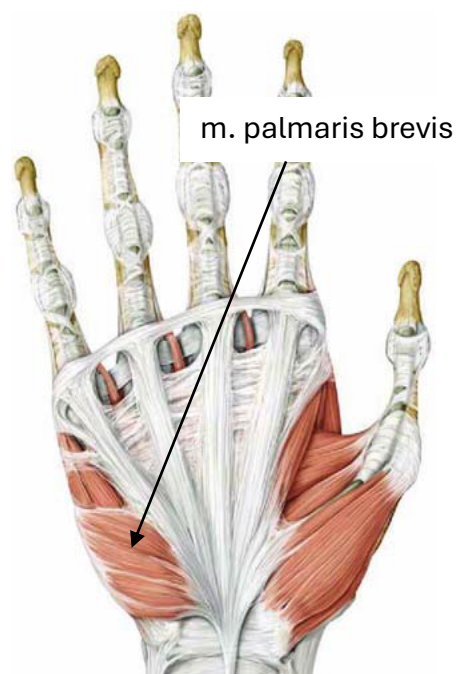
4 st

Mm. lumbricales

M. opponens digiti minimi

M. flexor digiti minimi brevis

M. abductor digiti minimi



1 M. adductor pollicis (caput transversum)

M. adductor pollicis (caput obliquum)

3 M. flexor pollicis brevis (caput superficiale)

2 M. abductor pollicis brevis

4 M. opponens pollicis

Retinaculum musculorum flexorum

M. abductor pollicis longus

C Superficial muscles of the hand.
Removed: Tendon sheaths.

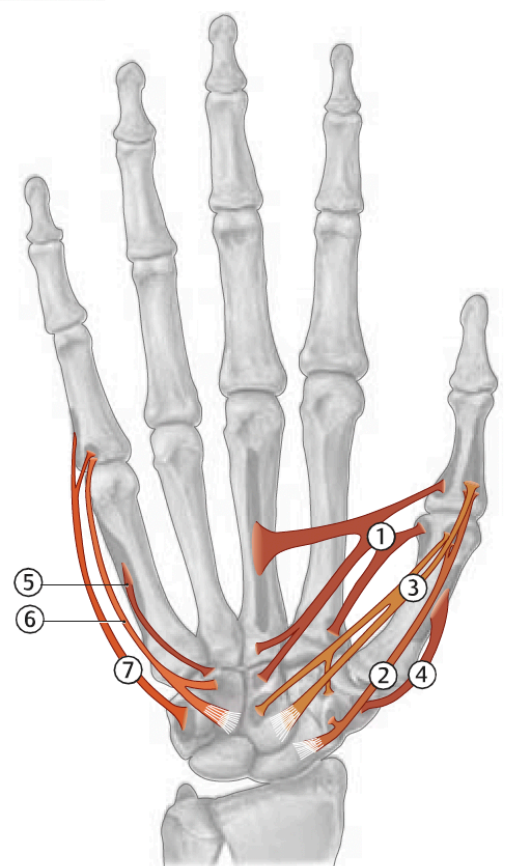


Fig. 21.21 Mm. lumbricales
Right hand, palmar view.

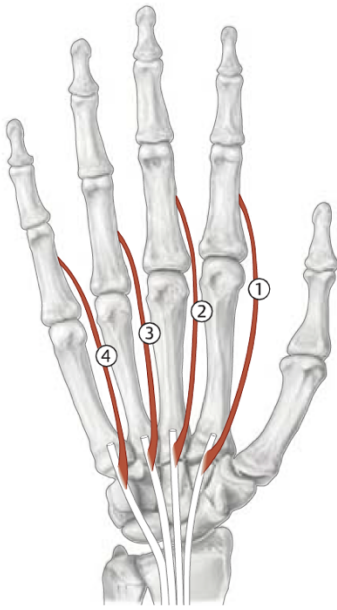


Fig. 21.22 Mm. interossei dorsales
Right hand, palmar view.

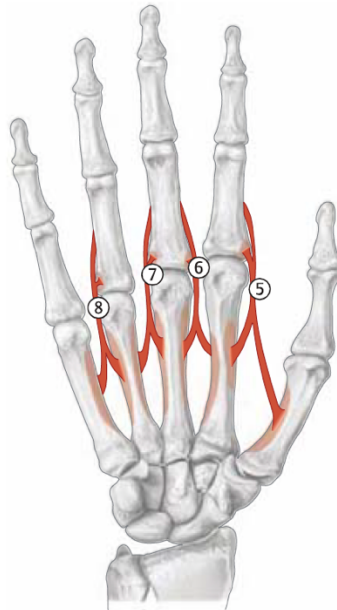
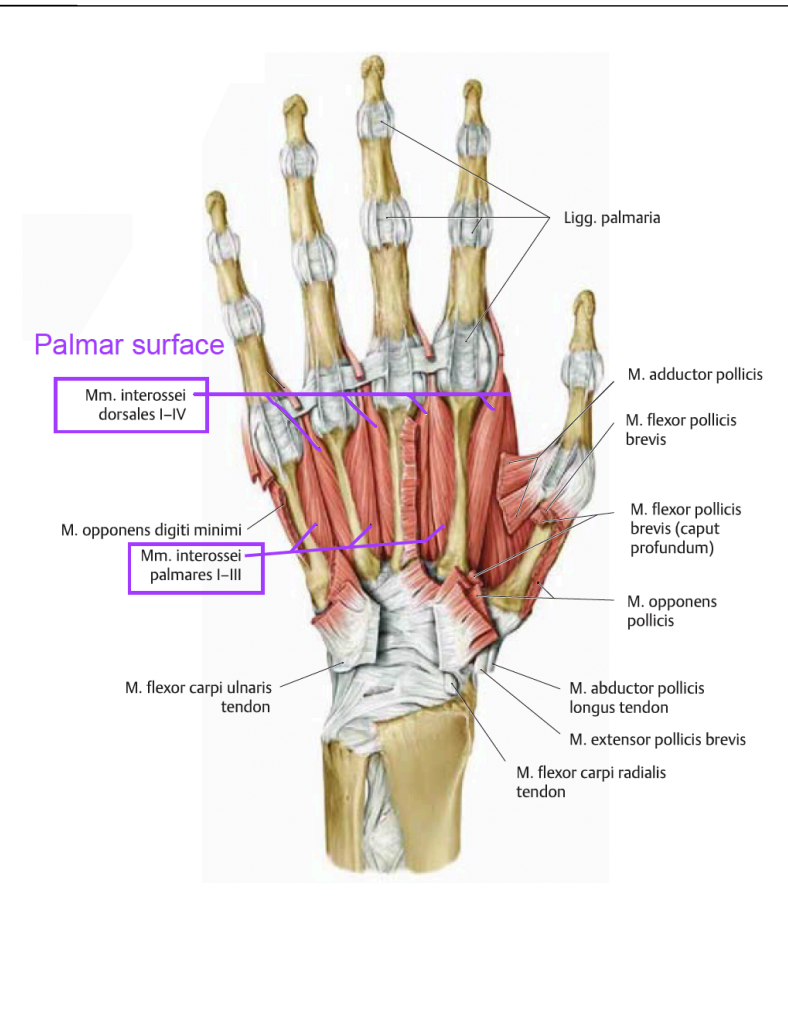
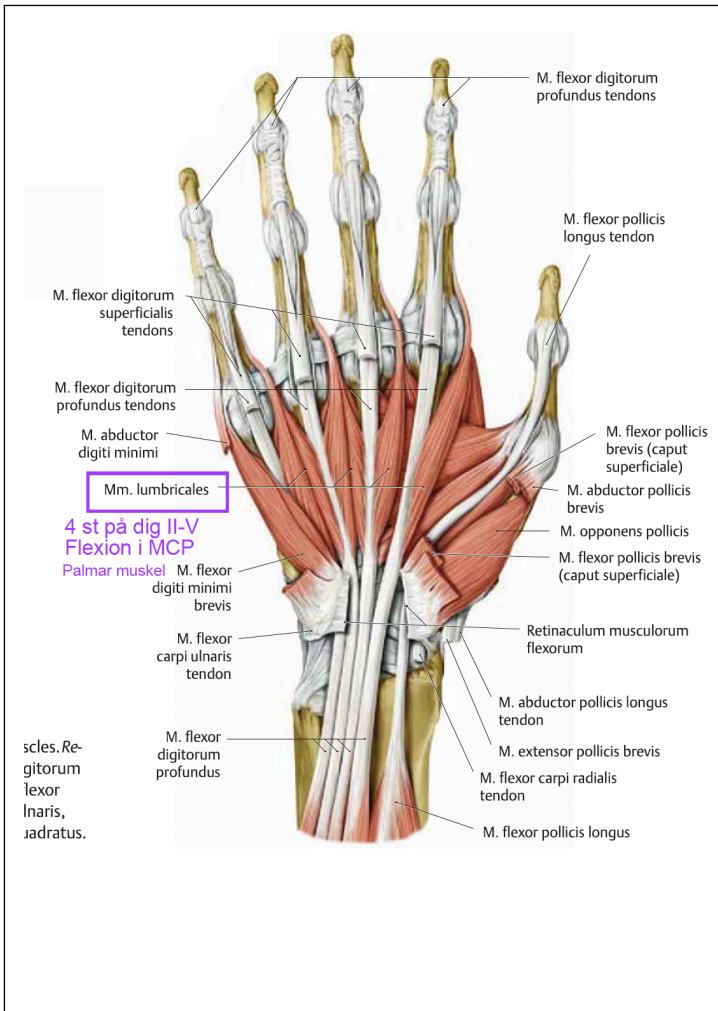
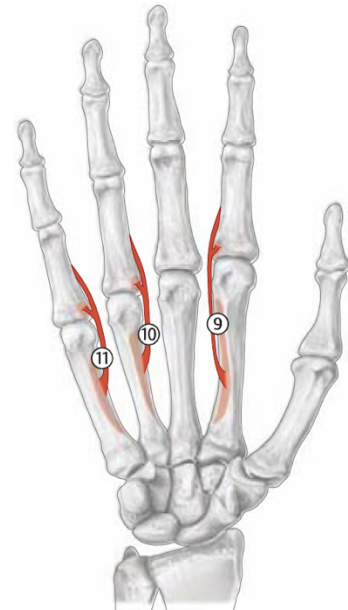


Fig. 21.23 Mm. interossei palmares
Right hand, palmar view.



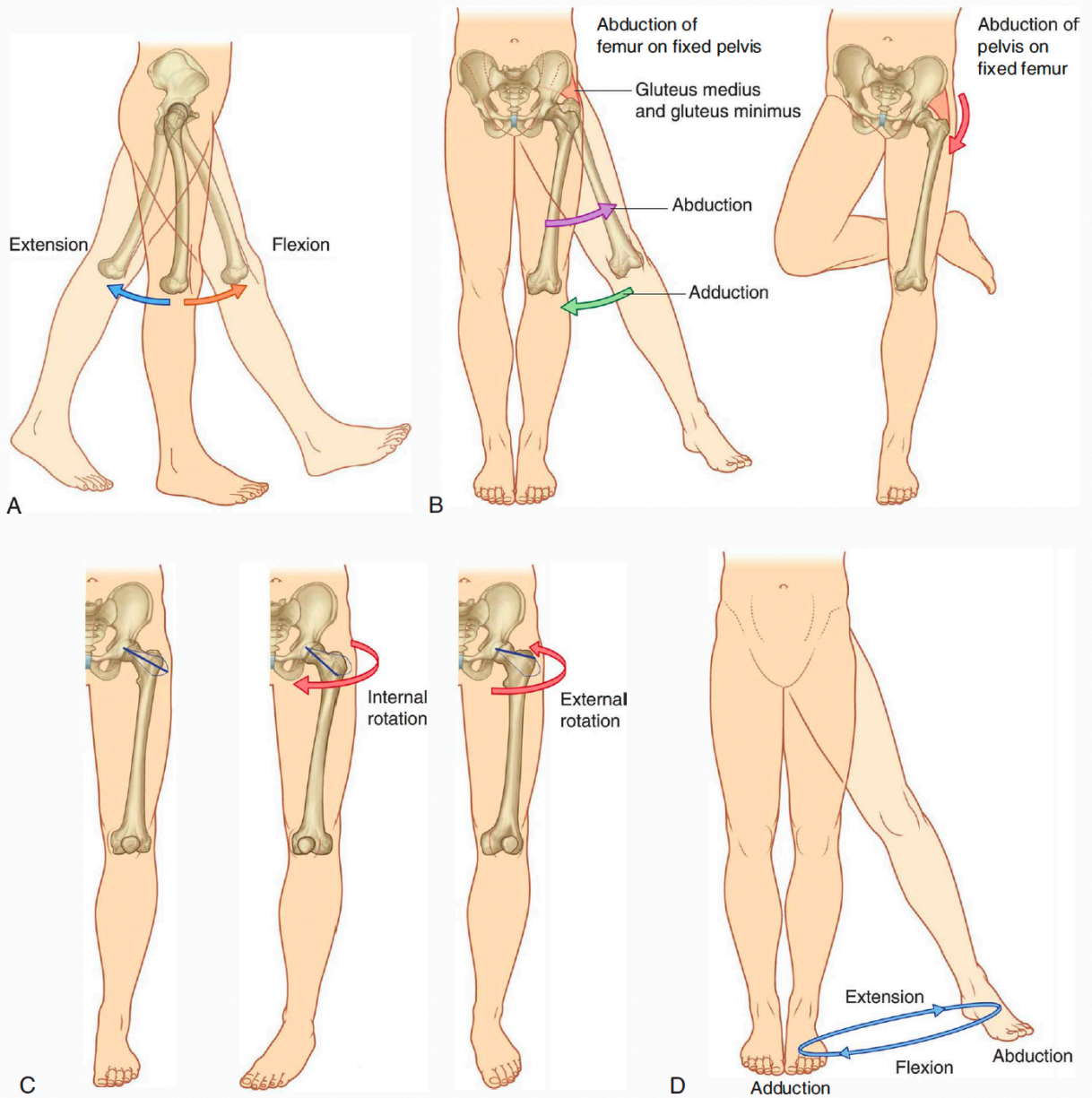


Fig. 6.5 Movements of the hip joint. **A.** Flexion and extension. **B.** Abduction and adduction. **C.** External and internal rotation. **D.** Circumduction.

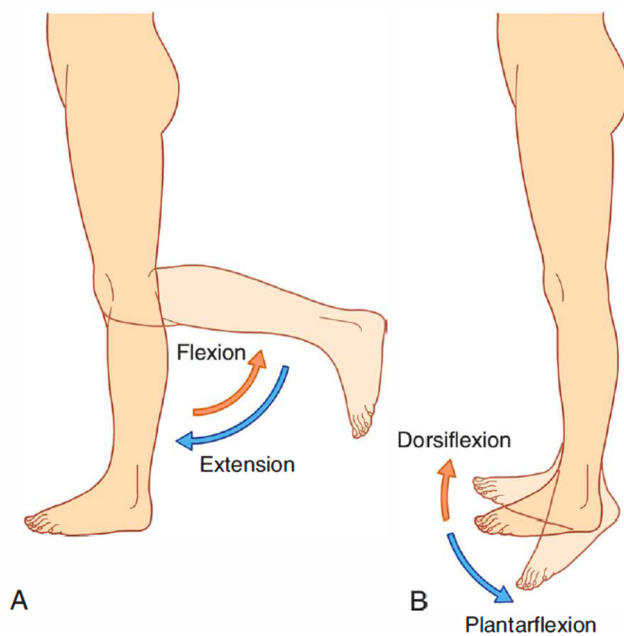
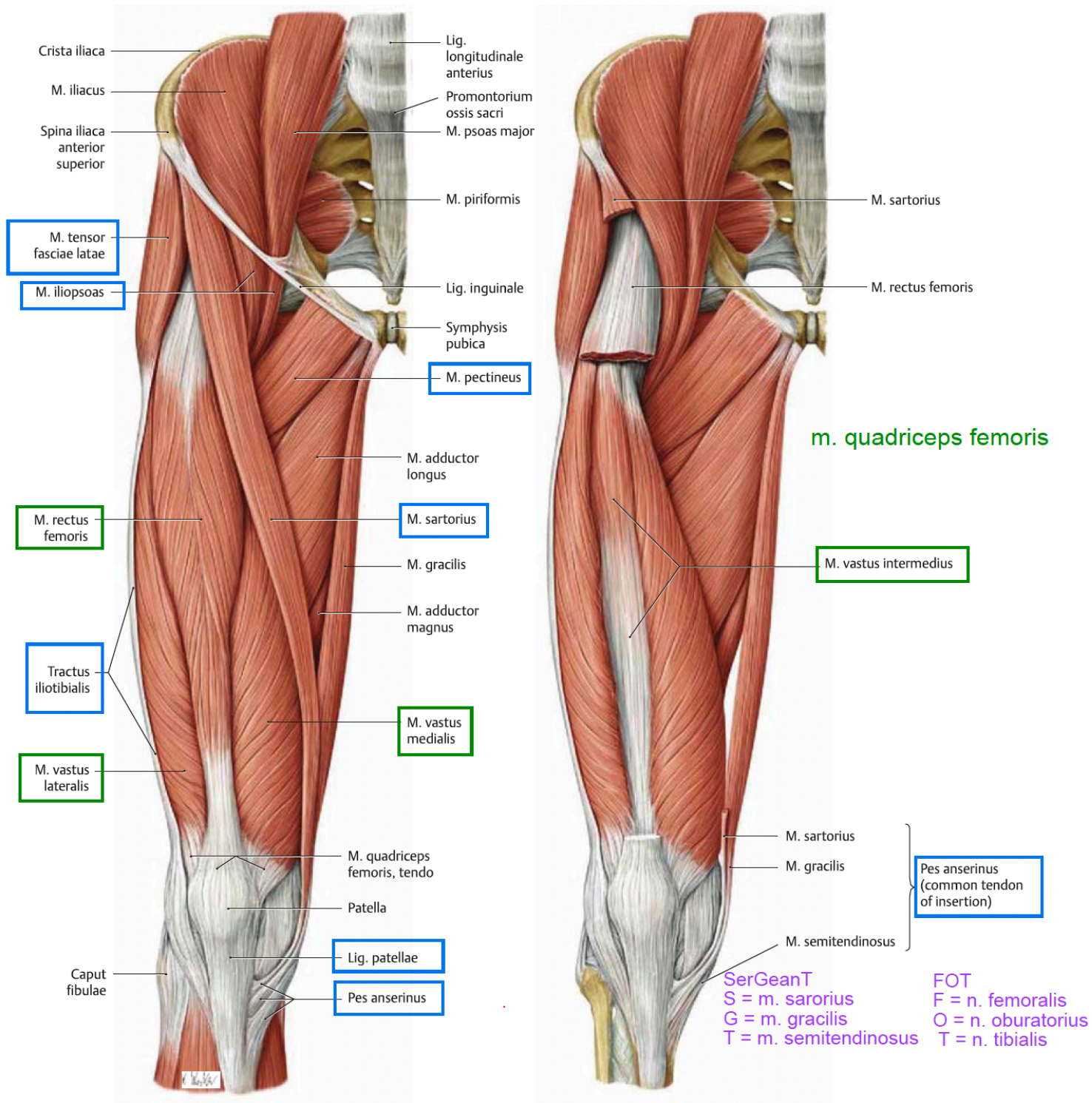


Fig. 24.14 Muscles of the hip and thigh: Anterior view (I)

Right limb. Muscle origins (O) are shown in red, insertions (I) in blue.



A Removed: Fascia lata (to the lateral tractus iliotibialis).

B Removed: M. sartorius and m. rectus femoris.

Femoris anterior (n. femoralis)

- m. sartorius (flexion av art. coxae)
- m. quadriceps femoris
 - m. rectus femoris
 - m. vastus medialis
 - m. vastus intermedius
 - m. vastus lateralis
 → **Extension i art. genus**
- m. tensor fasciae latae (n. gluteus superior, flexion i art. coxae)

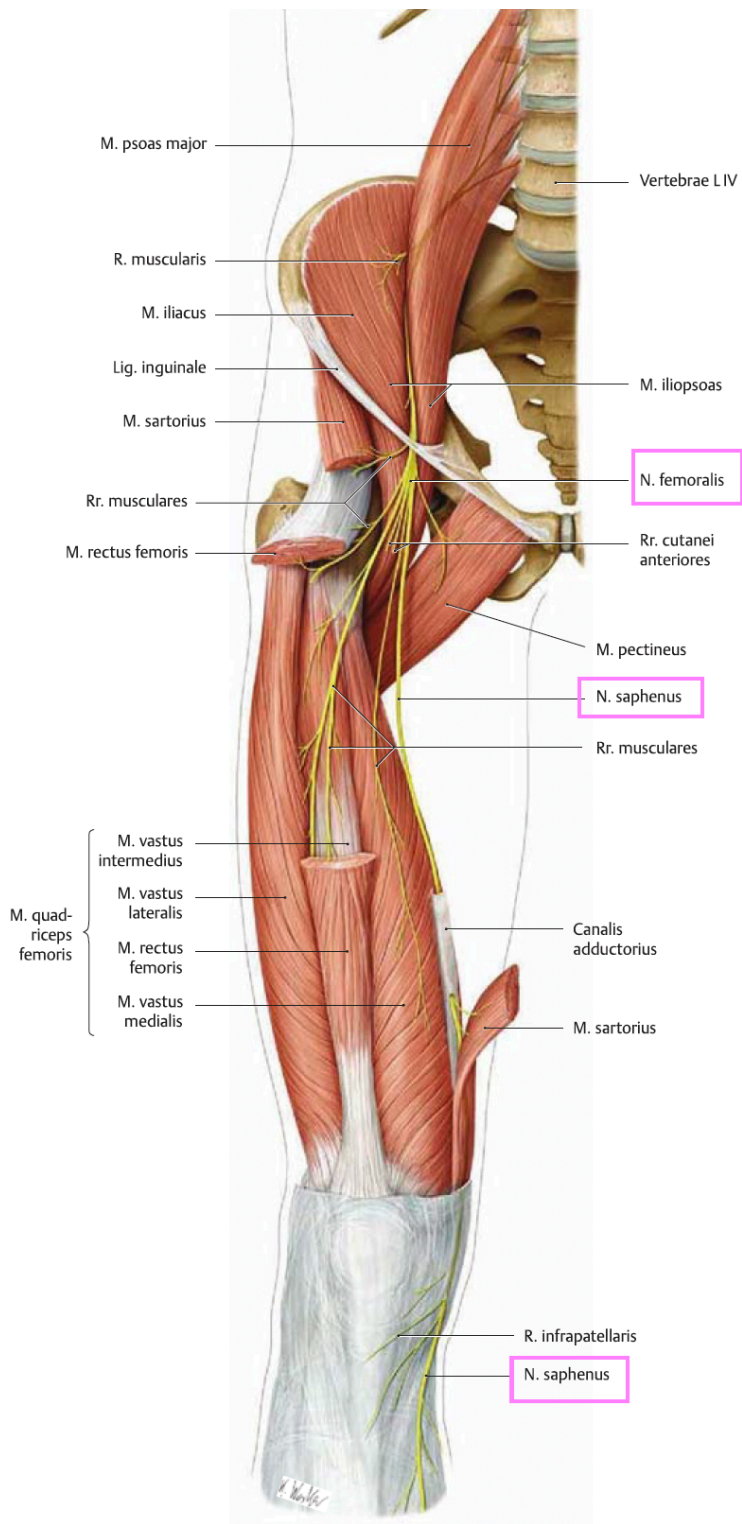
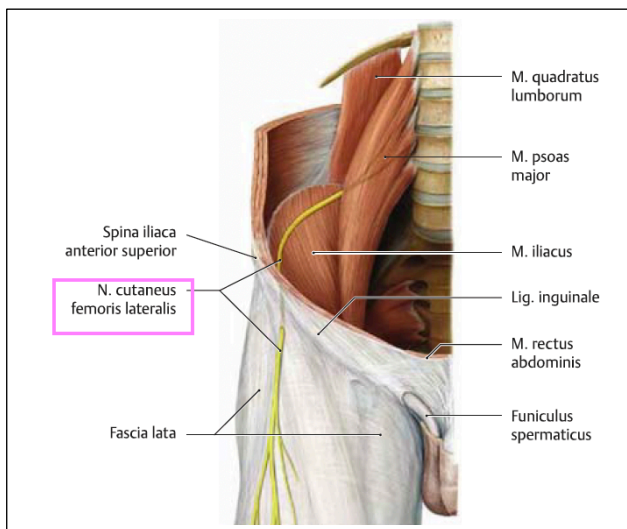
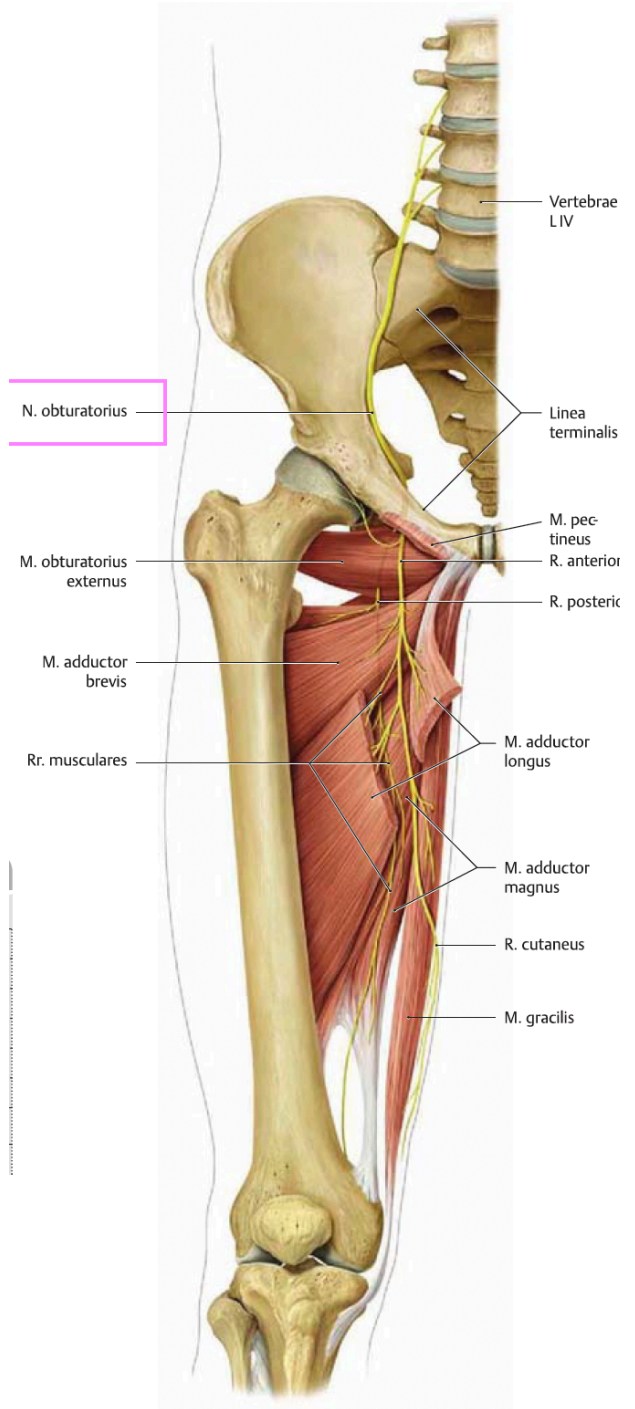
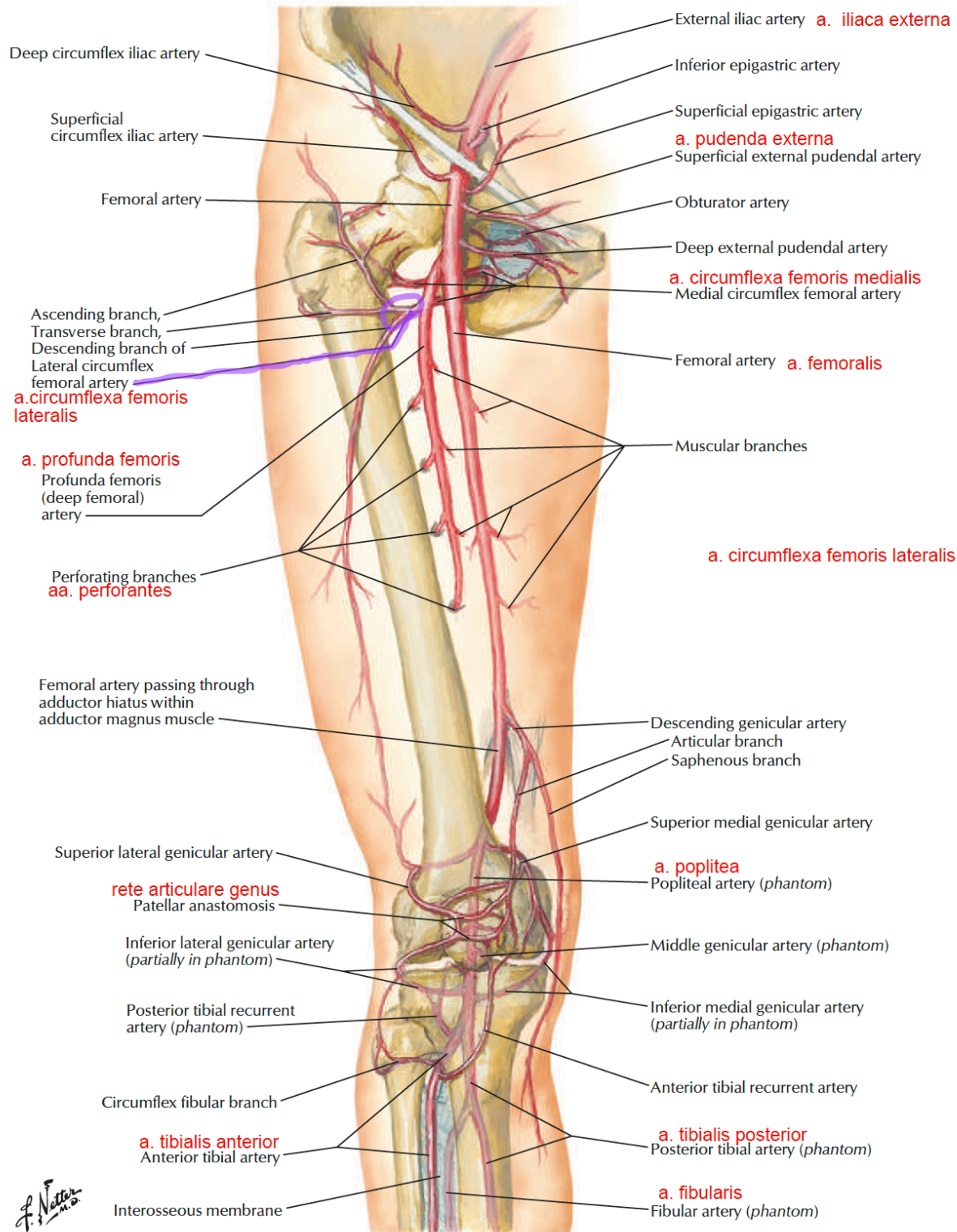


Fig. 27.15 N. obturatorius

Right side, anterior view.

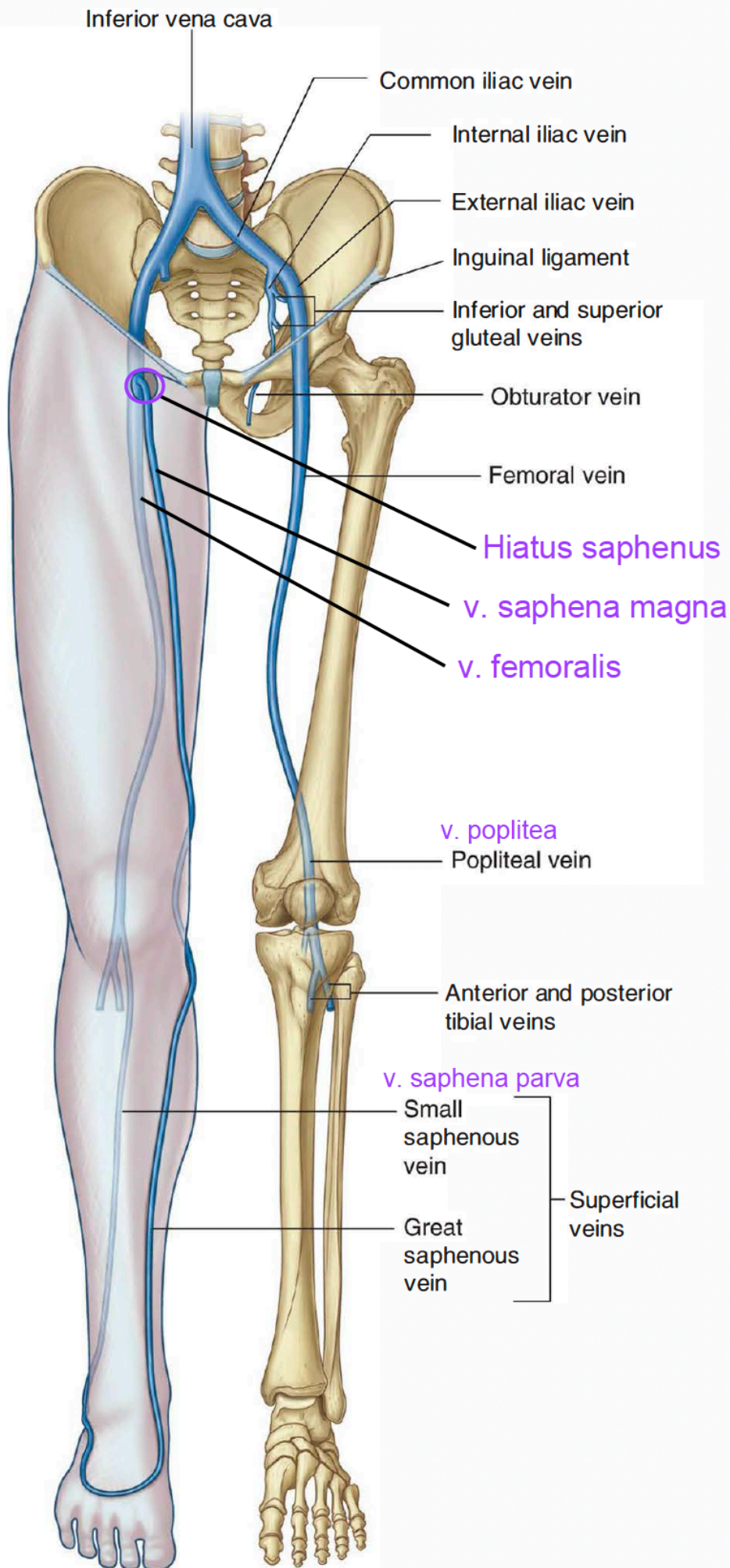


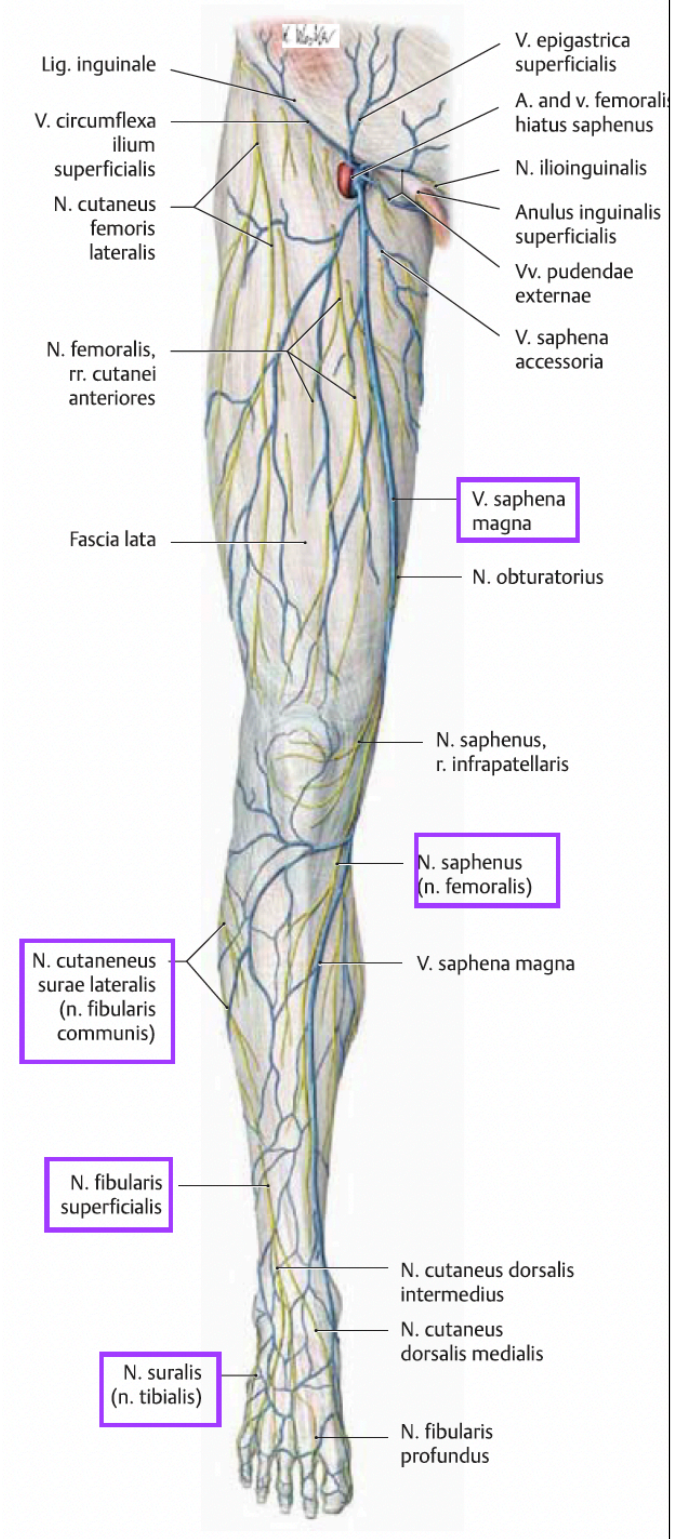


Arteries:

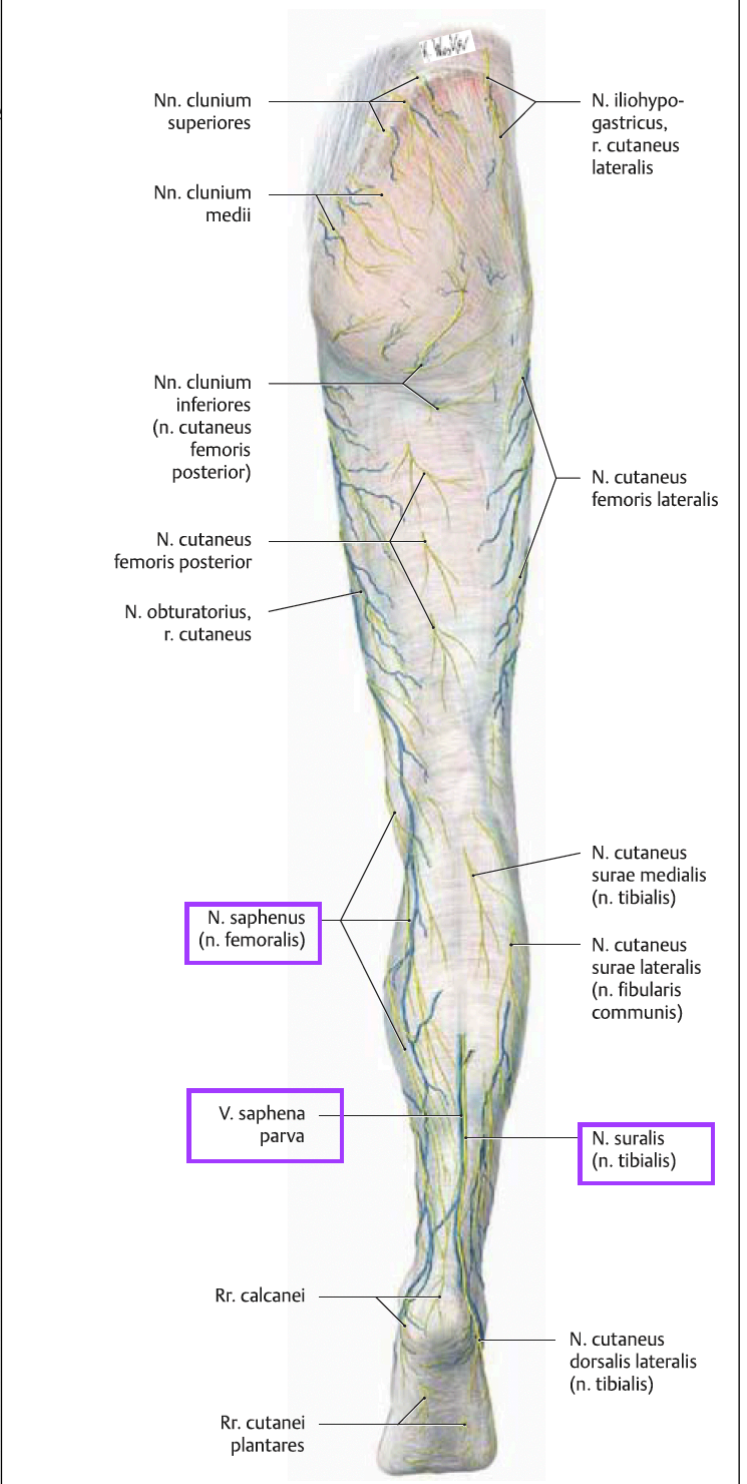
Lår/Överben:

- a. iliaca externa
- a. femoralis (medial), avgrening:
 - a. profunda femoralis (djupare, närmare femus & lite mer lateral)
 - a. circumflexa femoris medialis
 - a. circumflexa femoris lateralis
 - aa. perforantes
- a. poplitea, avgrening:
 - a. tibialis anterior
 - a. fibularis (lateral)
 - a. tibialis posterior (medial)

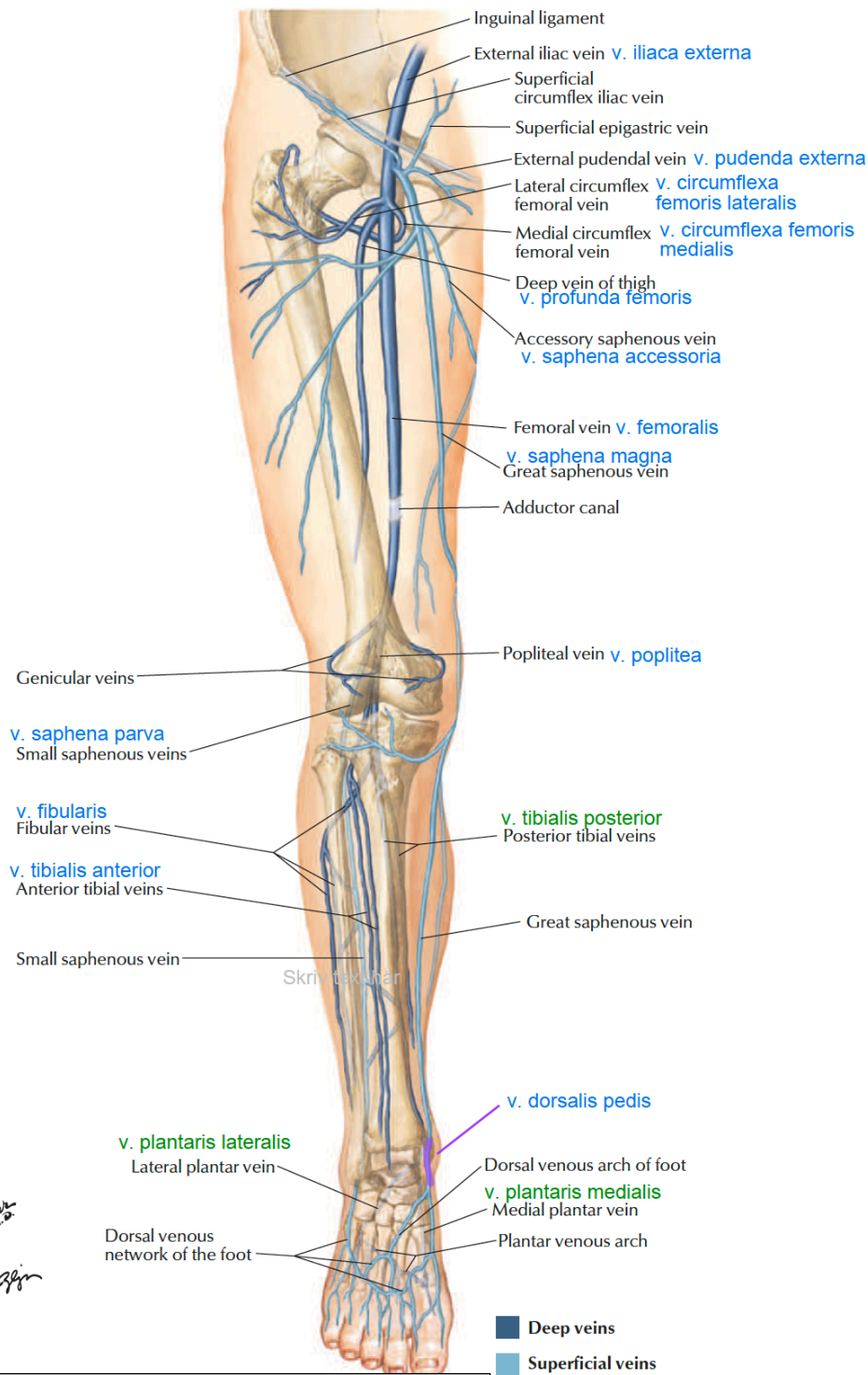




A Anterior view.



B Posterior view.



f. Netter M.D.
K. Mezzan

Vener:

Underben:

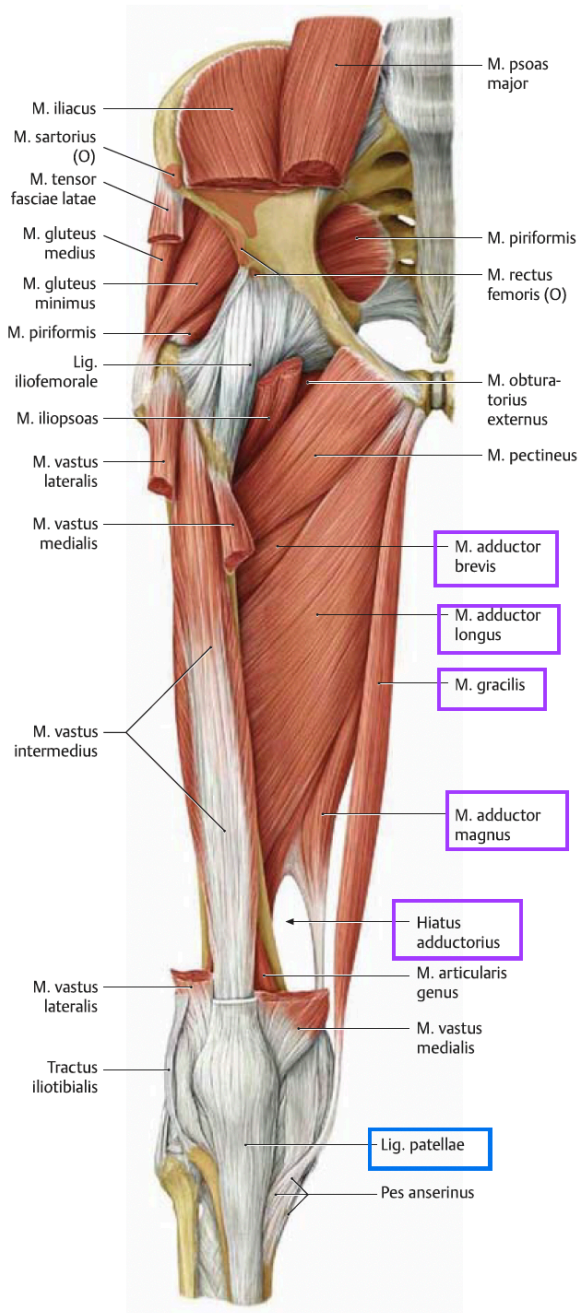
- v. fibularis
- v. tibialis posterior
- v. tibialis anterior
- v. saphena parva

↓

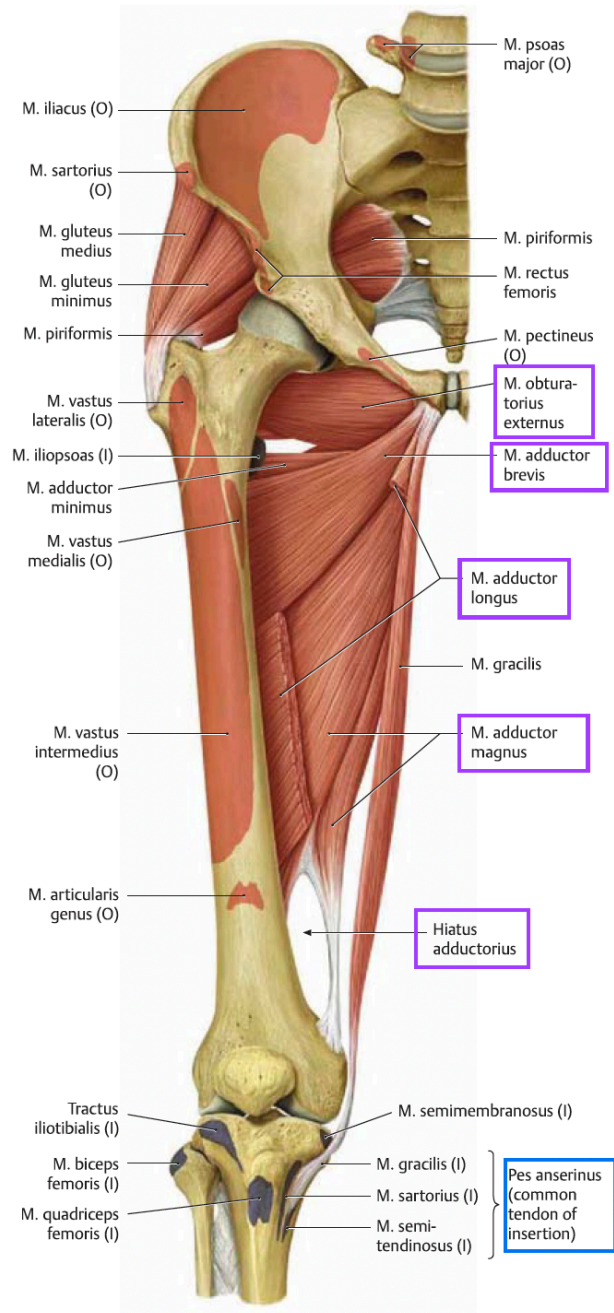
• v. poplitea

Knä

mediala facket på låret



C Removed: M. rectus femoris (completely), m. vastus lateralis, m. vastus medialis, m. iliopsoas, and m. tensor fasciae latae.



D Removed: M. quadriceps femoris (m. rectus femoris, m. vastus lateralis, m. vastus medialis, m. vastus intermedius), m. iliopsoas, m. tensor fasciae latae, m. pectineus, and midportion of m. adductor longus.

Femoris mediale: n. obturatorius, adduktion art coxae

Grab - m. gracilis

My - m. adductor magnus

Leg - m. adductor longus

Baby - m. adductor brevis

Please - m. pectineus

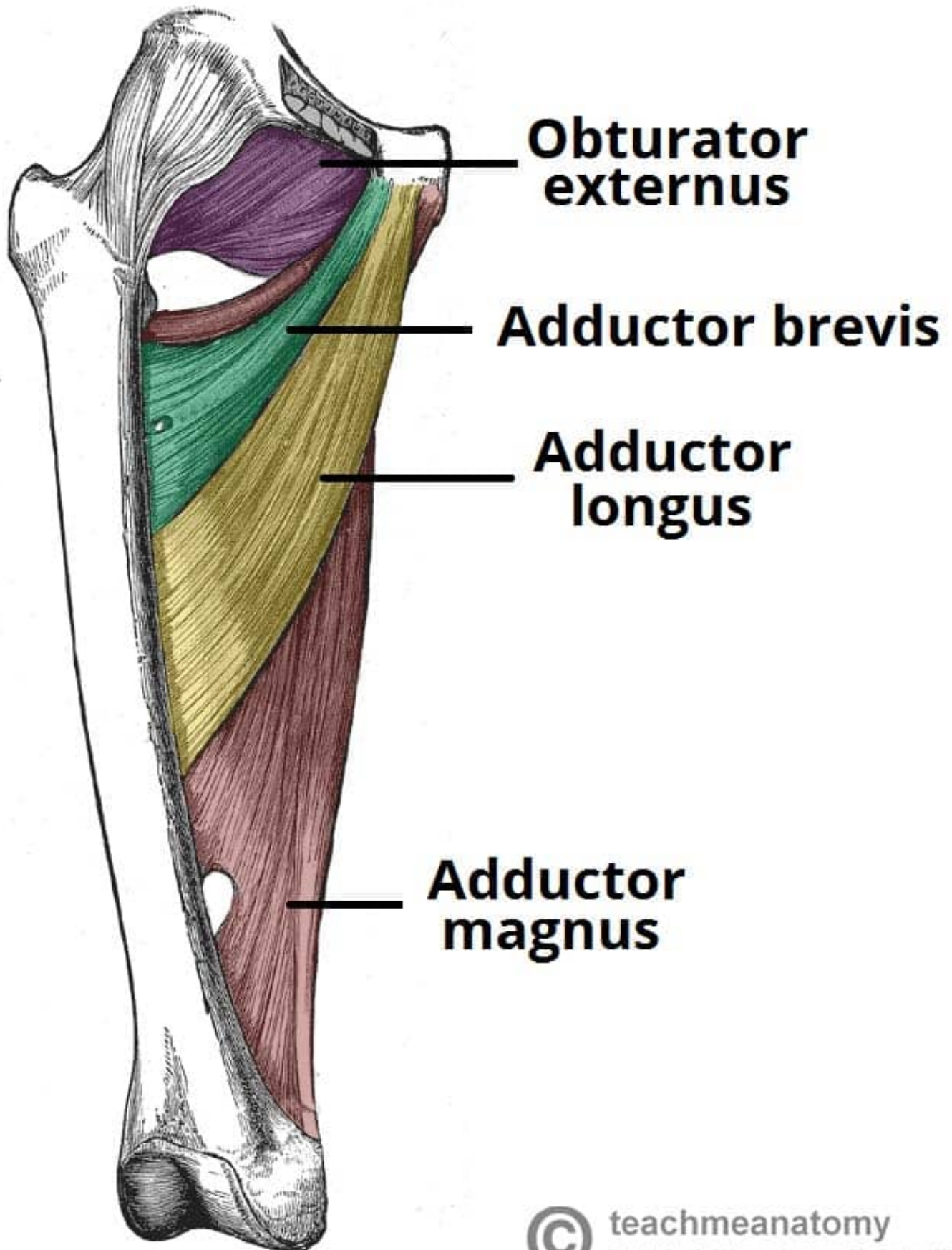
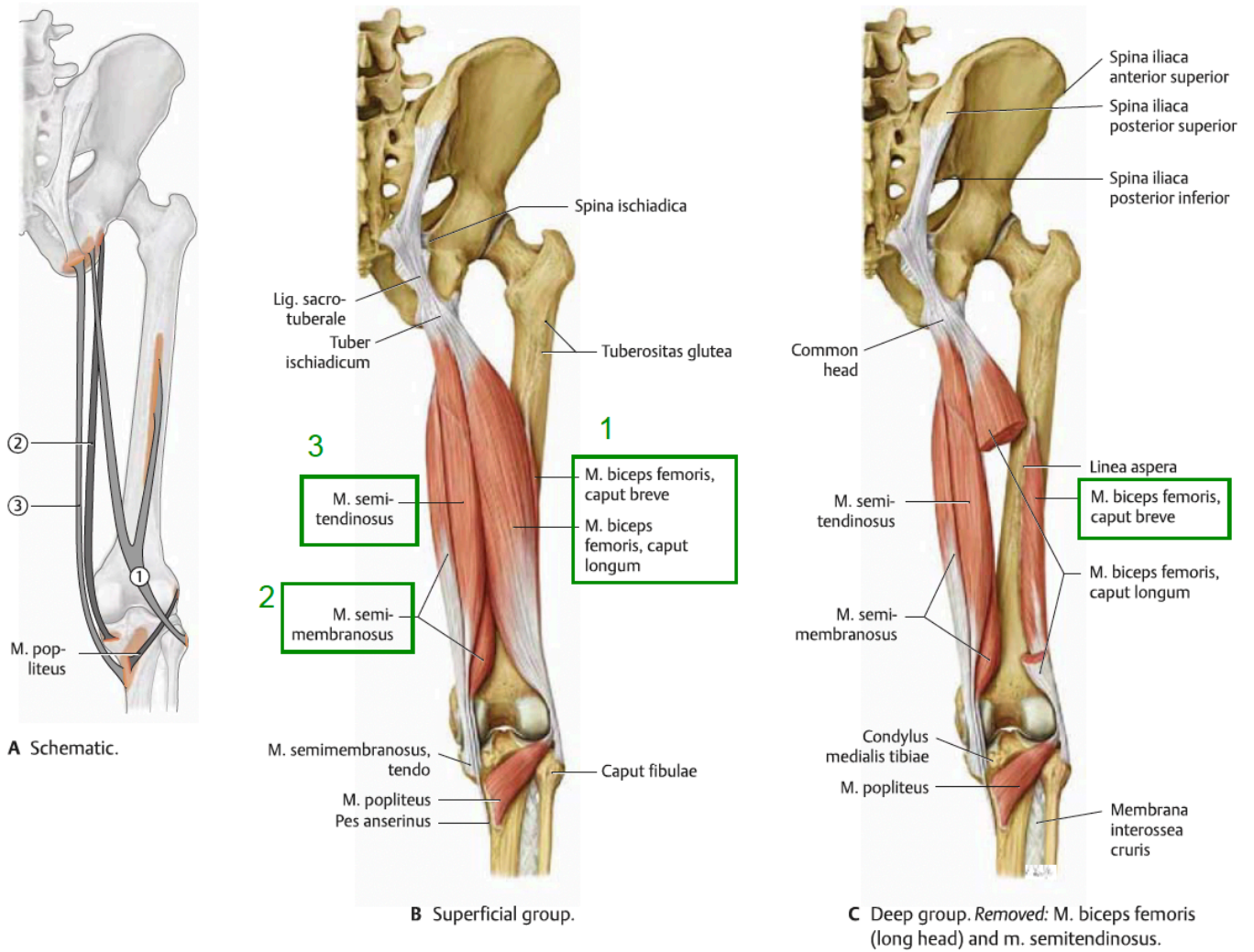


Fig. 24.27 Posterior thigh muscles
Right side, posterior view.

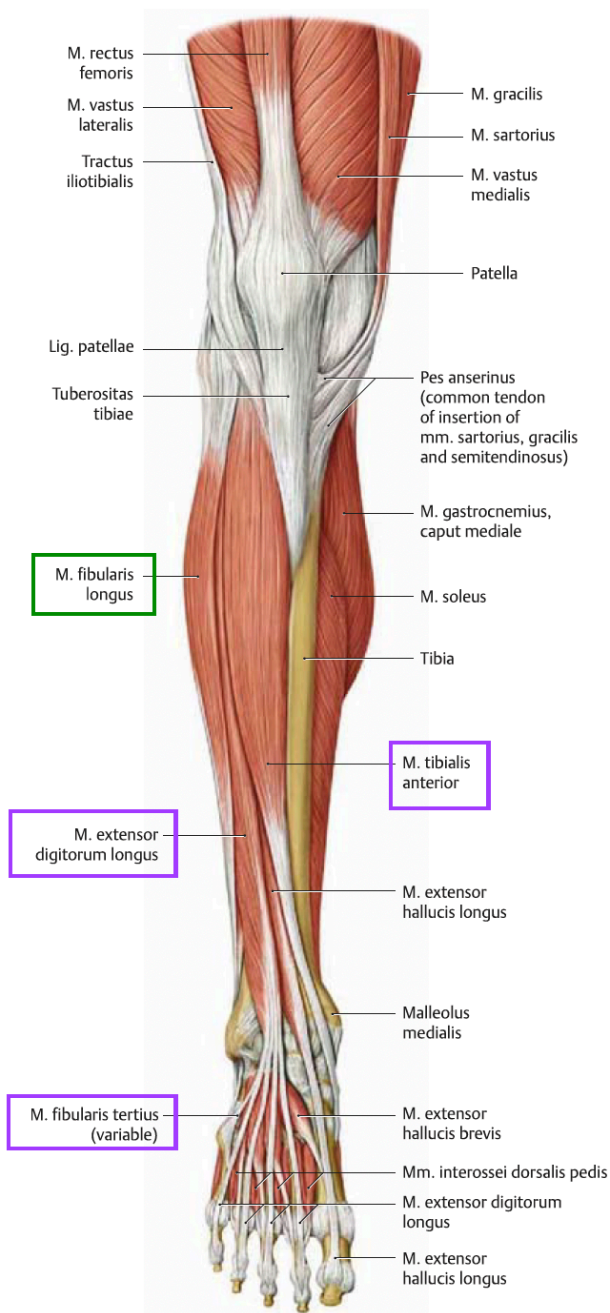


Femoris posterior: flexion art genu

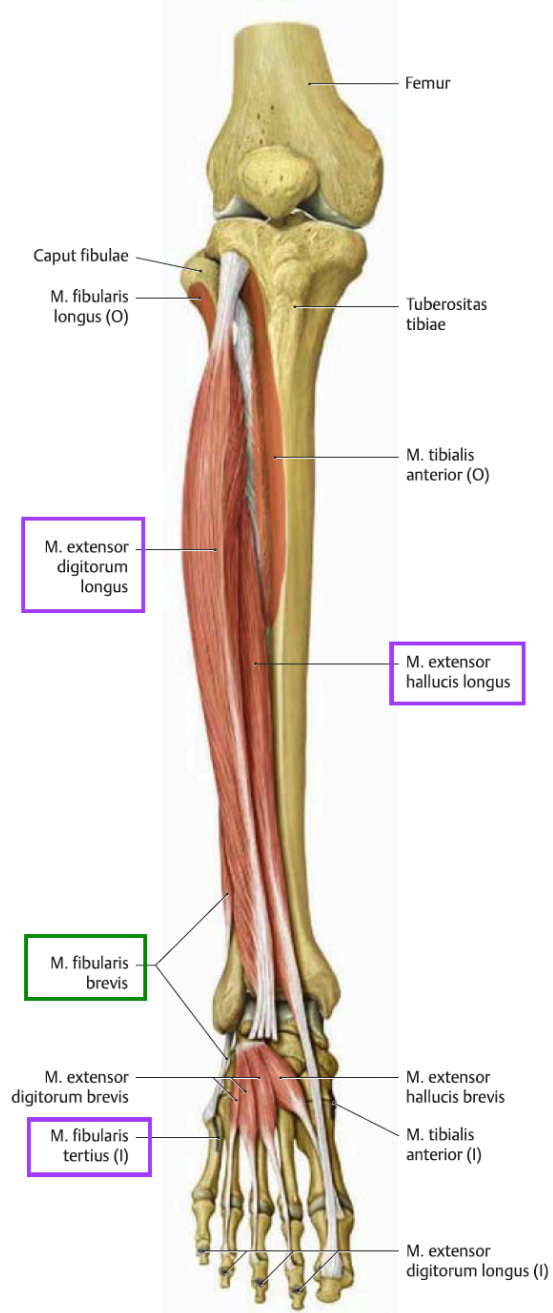
- m. biceps caput breve (lateral) - n. fibularis communis
 - m. biceps caput longum
 - m. semitendinosus
 - m. semimembranosus
-) n. tibialis

Fig. 25.19 Muscles of the leg: Anterior view
 Right leg. Muscle origins (O) shown in red, insertions (I) in blue.

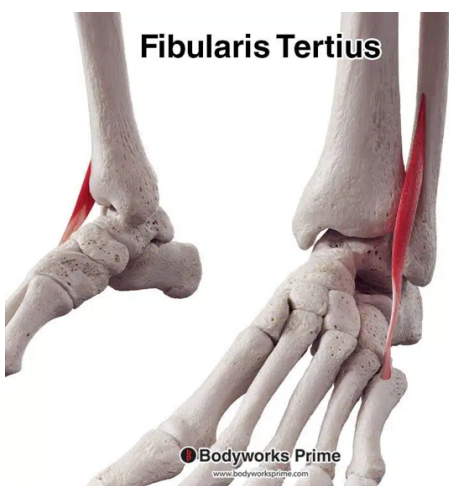
cruris anterior cruris laterale



A All muscles shown.

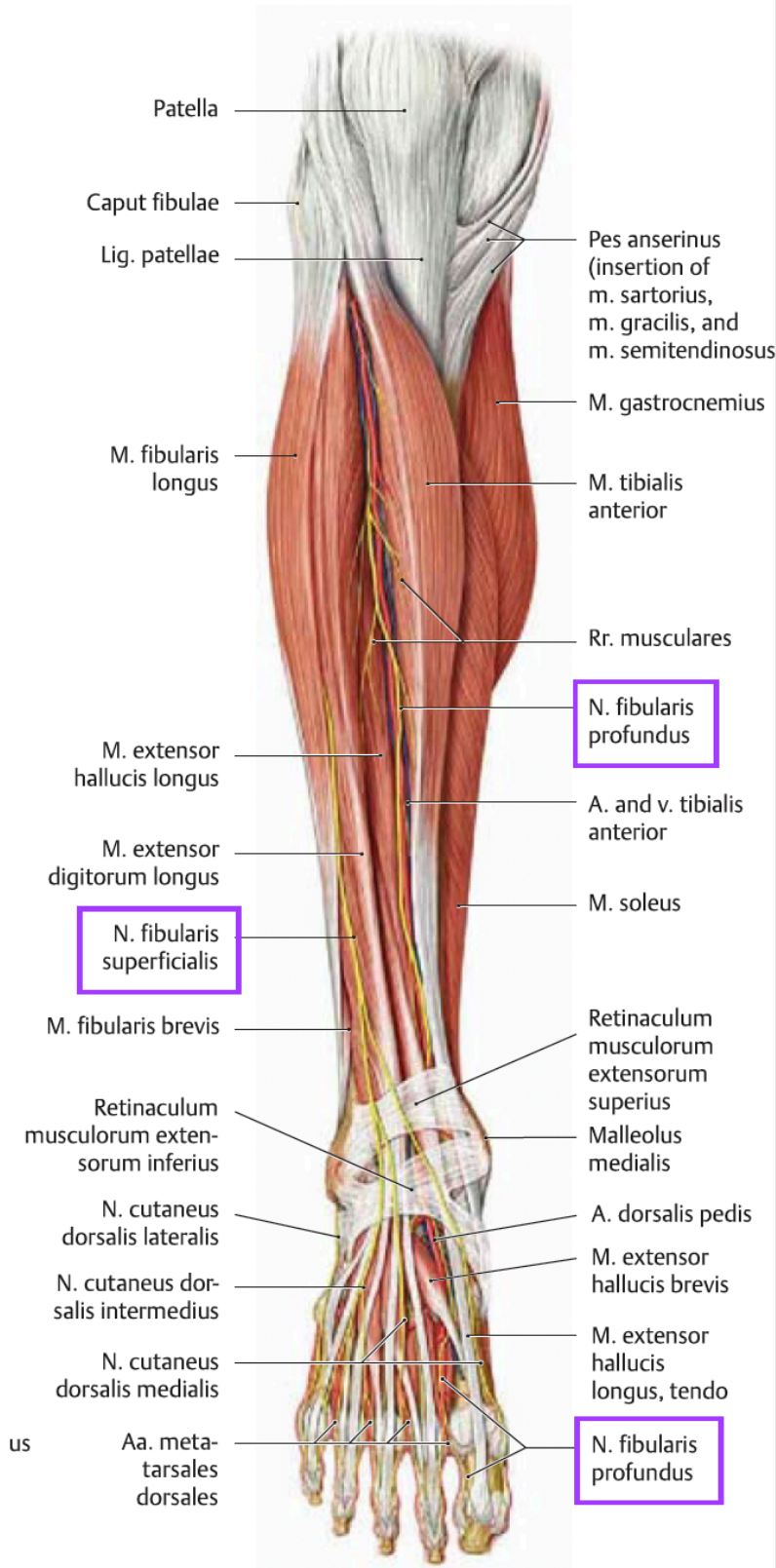


B Removed: M. tibialis anterior and m. fibularis longus; m. extensor digitorum longus tendons (distal portions). Note: M. fibularis tertius is a division of m. extensor digitorum longus.

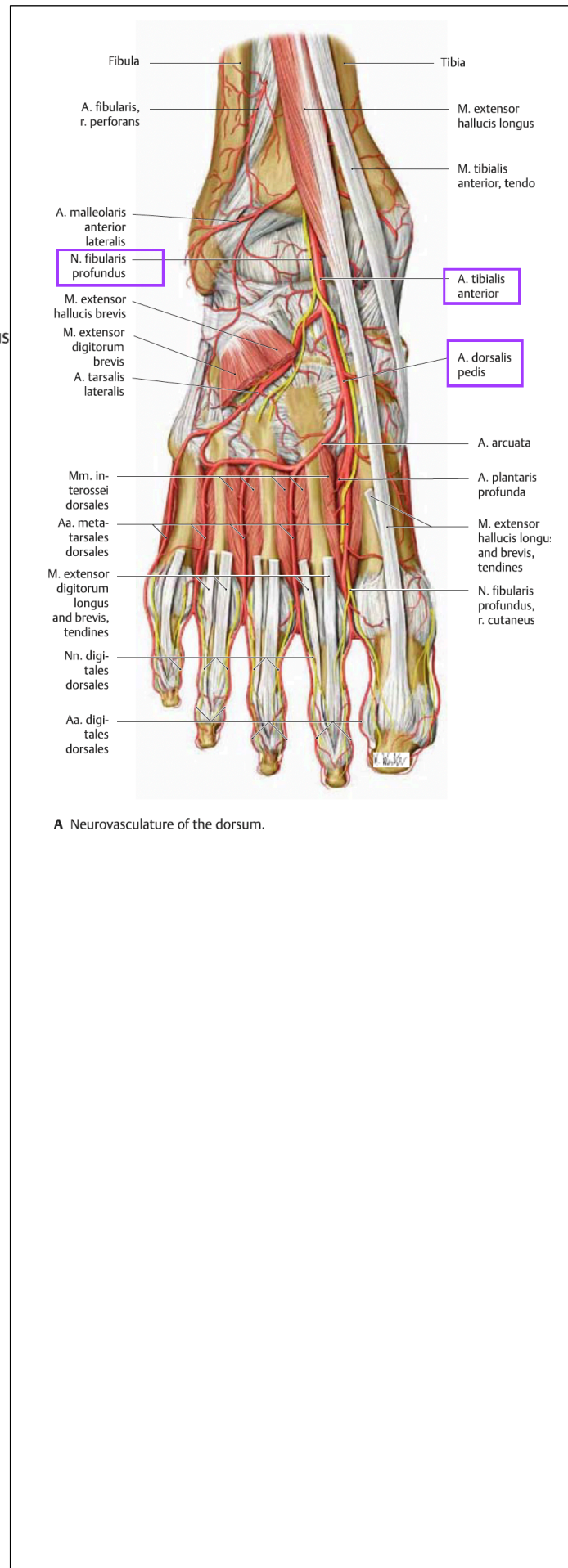


Cruris anterior: n. fibularis profundus, dorsal flexion i
 • m. tibialis anterior art. talocruralis
 • m. extensor digitorum longus
 • m. extensor hallucis longus

Cruris laterale: n. fibularis superficialis, plantar flexion i
 • m. fibularis longus (lateral) art. talocruralis
 • m. fibularis brevis



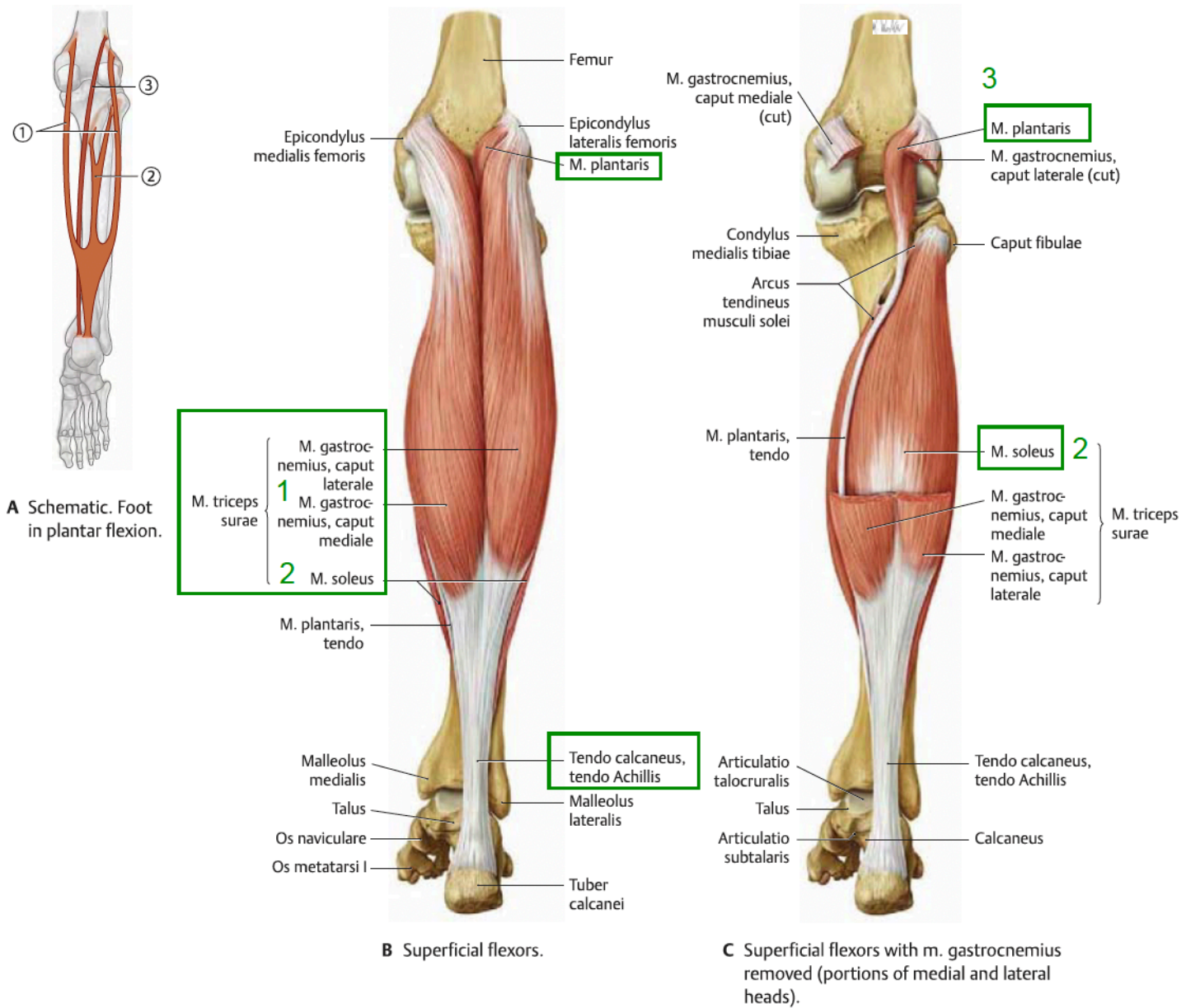
B Neurovasculature of the leg. *Removed:* Skin, subcutaneous tissue, and fasciae. *Retracted:* M. tibialis anterior and m. extensor hallucis longus.



A Neurovasculature of the dorsum.

Fig. 25.24 Superficial flexors

Right leg, posterior view.



Crunis posterior: n. tibialis, plantar flexion art. talocruralis

• m. triceps surae: y+ligt

• m. gastrocnemius - två huvuden

• m. soleus

• m. tibialis posterior ←

• m. flexor digitorum longus (medial om)

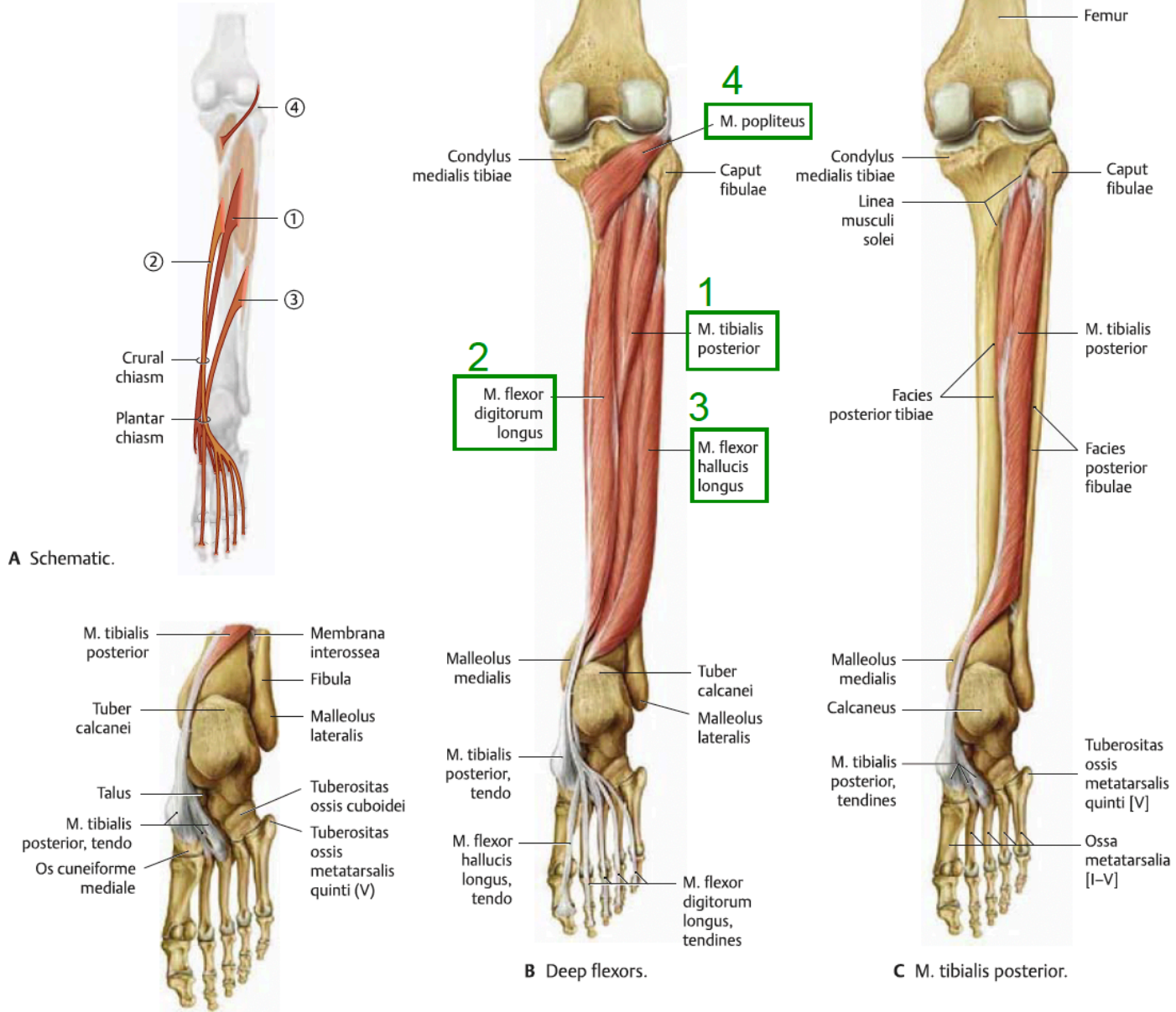
• m. flexor hallucis longus (lateral om)

• m. plantaris (tunn)

• m. poplitea - flexion art. genu

Fig. 25.25 Deep flexors

Right leg with foot in plantar flexion, posterior view.

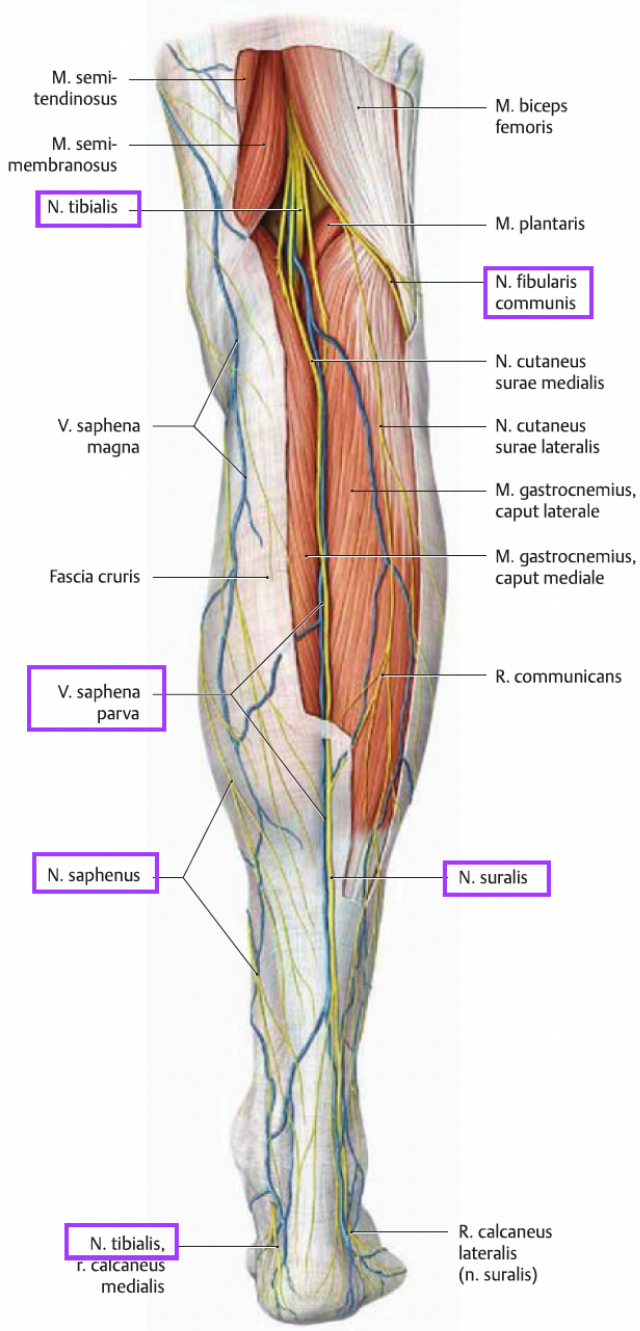


cruris posteriorus (pars profunda)

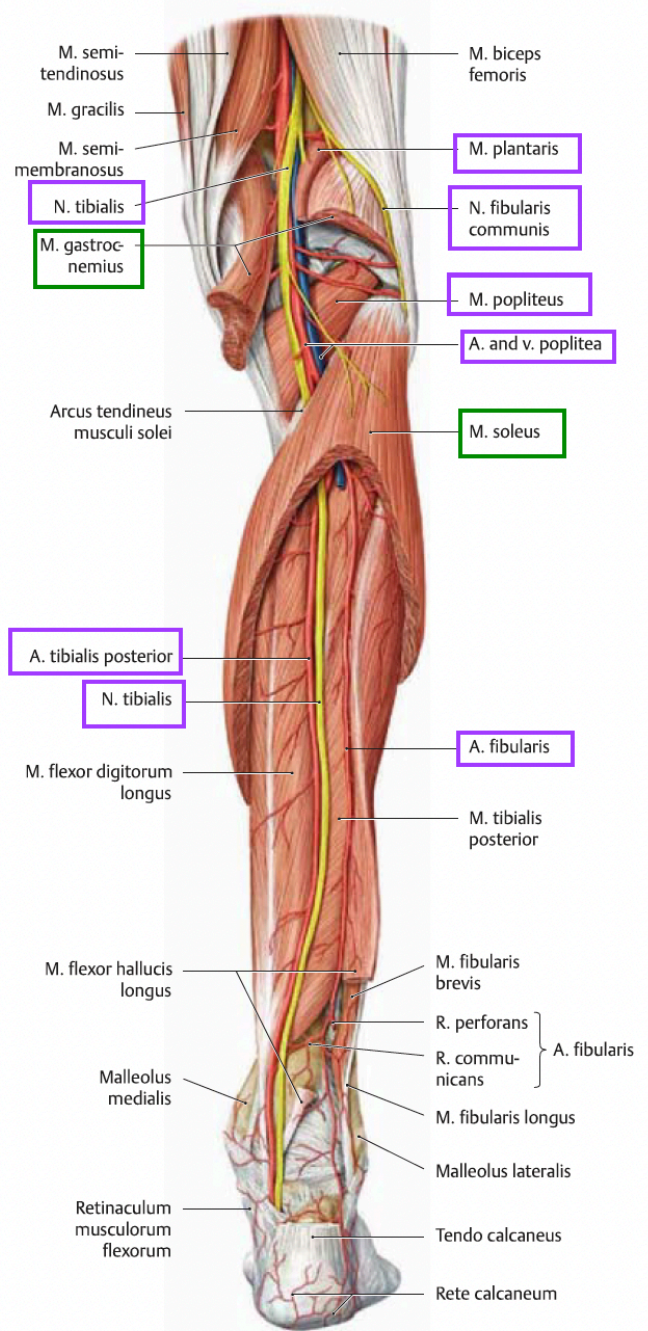
Cruris posterior: n. tibialis, plantar flexion art. talocruralis

- m. triceps surae: y+ligt
 - m. gastrocnemius - två huvuden
 - m. soleus

- m. tibialis posterior
- m. flexor digitorum longus (medial om)
- m. flexor hallucis longus (lateral om)
- m. plantaris (tunn)
- m. poplitea - flexion art. genu

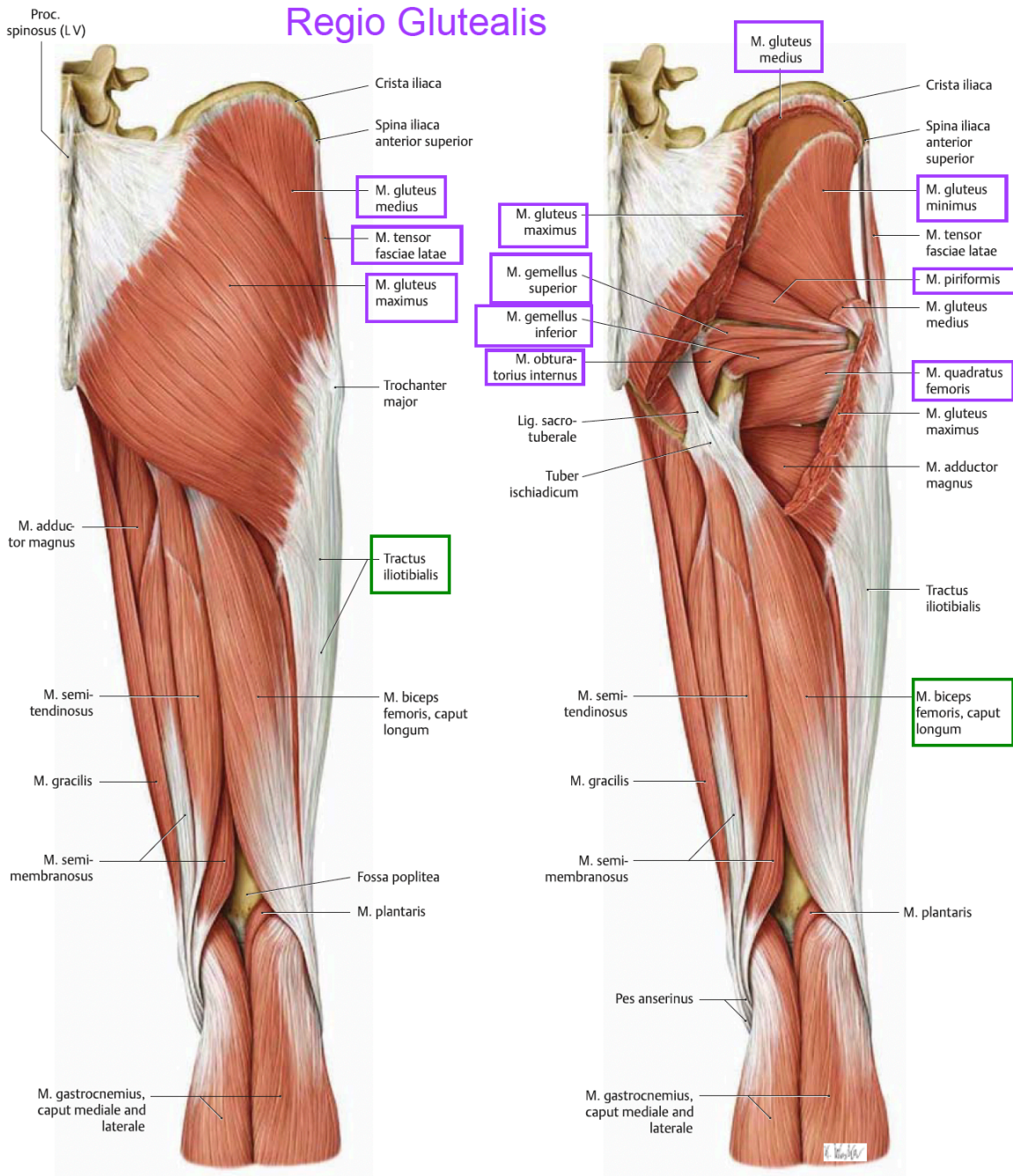


A Superficial neurovascular structures.



B Deep neurovascular structures.

Fig. 24.17 Muscles of the hip, thigh, and regio glutealis: Posterior view (I)
 Right limb. Muscle origins (O) are shown in red, insertions (I) in blue.

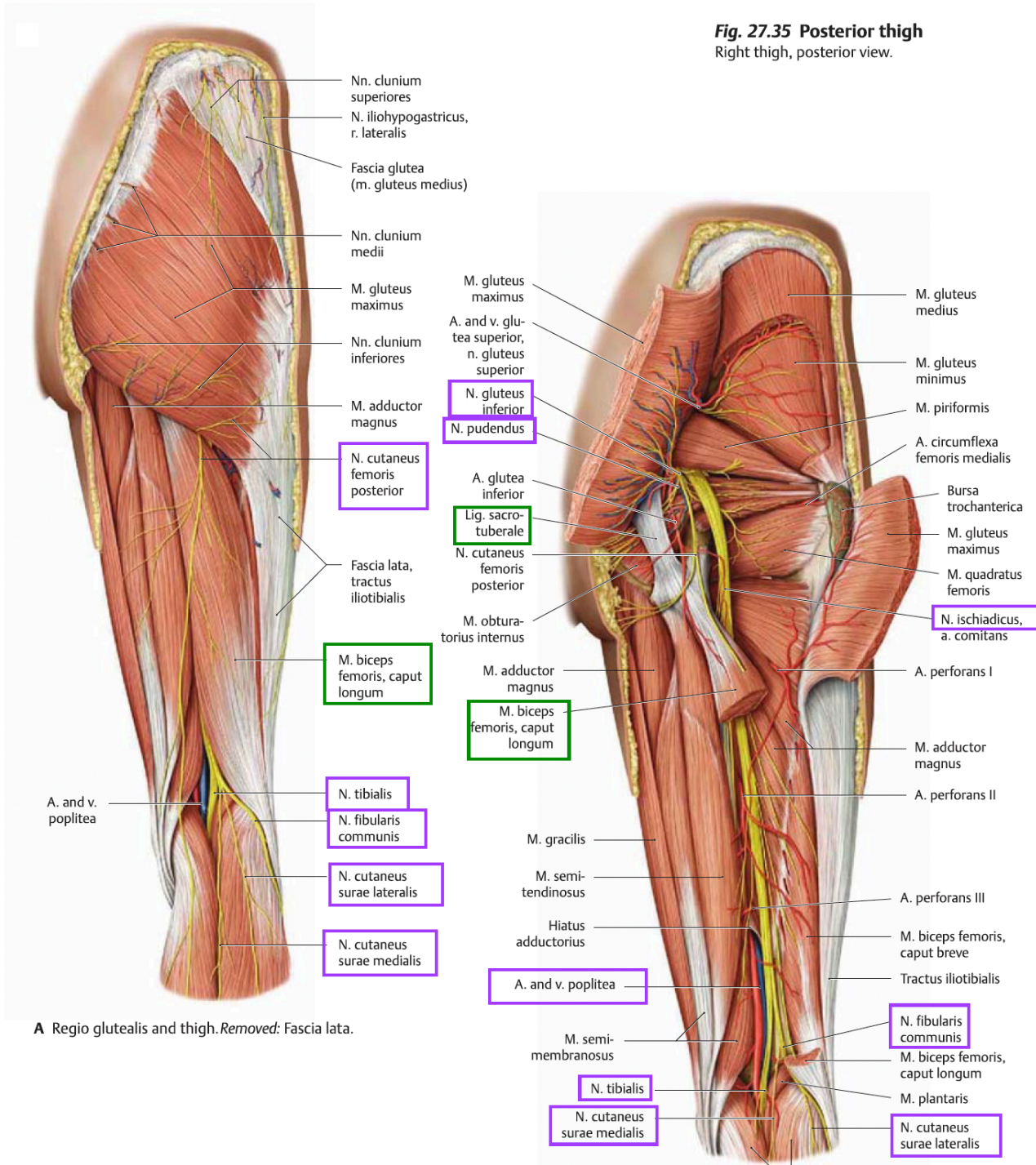


Regio gluteus: abduktion art. coxae

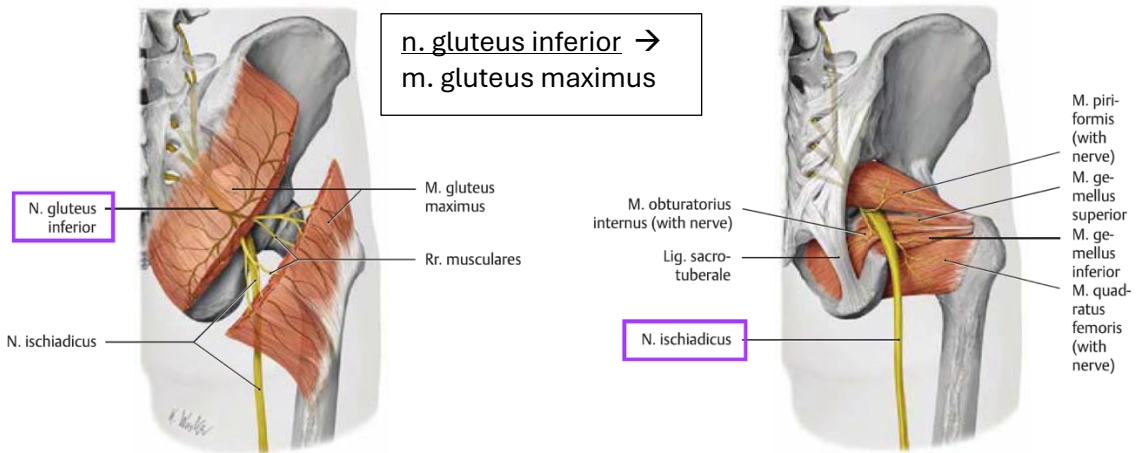
- m. gluteus maximus - n. glutens inferior
- m. glutens medius } n. glutens superior
- m. glutens minimus }
- m. piriformis
- m. triceps coxae:
 - m. gemellus superior
 - m. obturatorius internus
 - m. gemellus inferior

n. spinalis (plexus sacralis)

Fig. 27.35 Posterior thigh
Right thigh, posterior view.



A Regio glutealis and thigh. *Removed: Fascia lata.*



B N. gluteus inferior. Posterior view.

C Direct branches. Posterior view.

Fig. 27.33 Regio glutealis and fossa ischioanalis

Right regio glutealis, posterior view.

Removed: Mm. gluteus maximus and medius.

n. gluteus superior →
 - m. gluteus medius och minimus.

n. spinalis (pelxus sacralis) →
 - m. piriformis
 - m. gemellus superior e. inferior
 - m. obturatorius internus

Gluteala muskler funktion gemnsamt:
 Abduktion i art. coxae

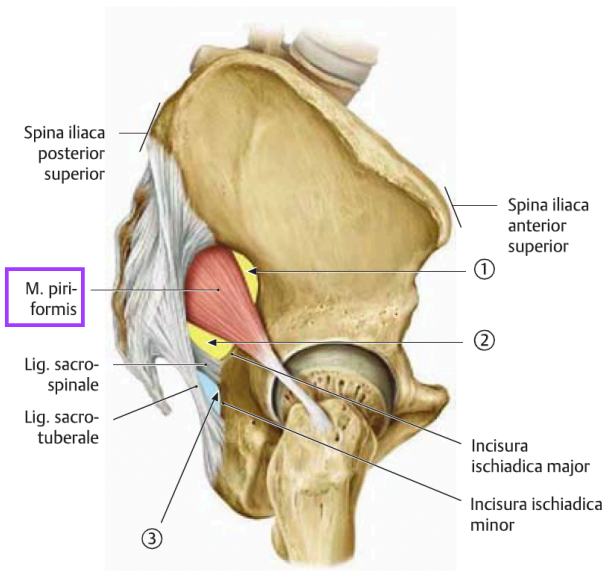
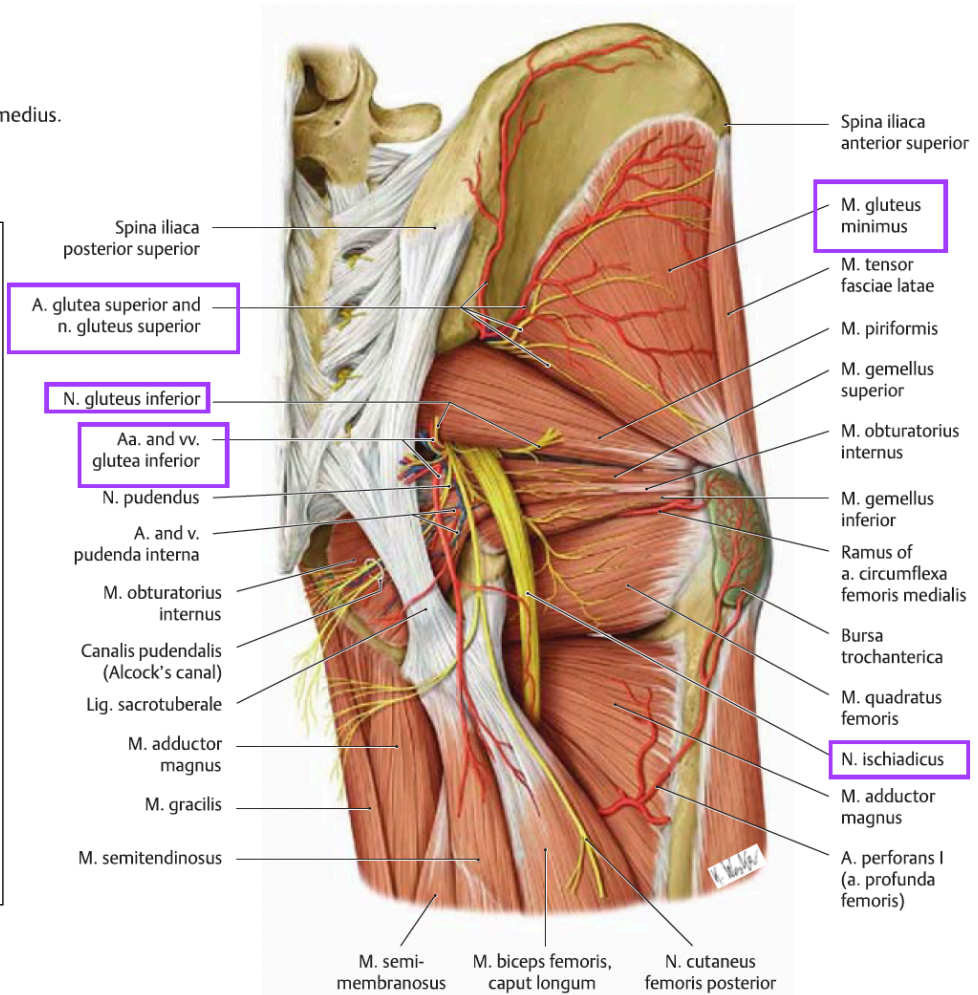


Table 27.9 Sciatic foramina		
Foramen	Transmitted structures	Boundaries
① Foramen suprapiriforme	A. and v. glutea superior N. gluteus superior	
Foramen ischiadicum majus	A. and v. glutea inferior N. gluteus inferior A. and v. pudenda interna N. pudendus N. ischiadicus N. cutaneus femoris posterior	Incisura ischiadica major Lig. sacrospinale Os sacrum
② Foramen infrapiriforme		
③ Foramen ischiadicum minus	A. and v. pudenda interna N. pudendus M. obturatorius internus	Incisura ischiadica minor Lig. sacrospinale Lig. sacrotuberale