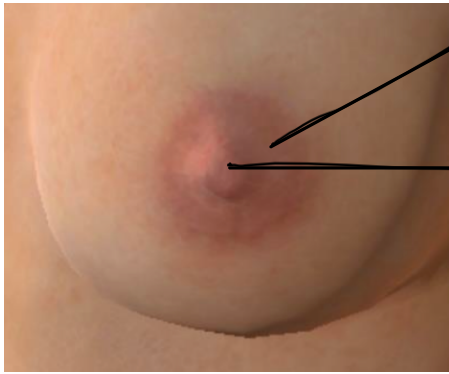


Hej och välkommen till mina anatomidokument!

Dessa dokument är sammanställda baserat på vår strukturlista för kurserna BV3 och BV4 från VT 2024. Jag har gjort mitt bästa för att inkludera alla relevanta strukturer, men strukturlistan kan ha ändrats för er termin, så se till att kontrollera eventuella skillnader och fel som jag kanske har gjort.

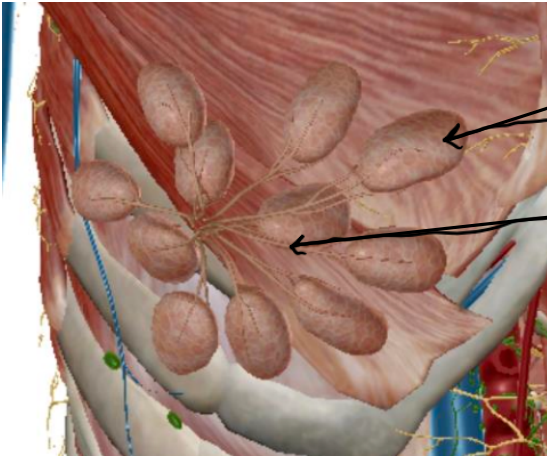
En sak att notera är att min handstil ibland kan vara svår att läsa. Intressant nog visar studier att text som är svår att läsa kan förbättra inläringen och minnet. Du kan läsa mer om detta i artiklar från Harvard Business Review ([Hard to Read Fonts Promote Better Recall](#)) och Princeton University ([Font focus: Making ideas harder to read may make them easier to retain](#)).

Jag önskar dig lycka till med kurserna BV3 och BV4. De kan verka utmanande ibland, men med engagemang och hårt arbete är de definitivt genomförbara. Jag hoppas att dessa dokument kan vara till hjälp i dina studier.



Areola mammae, med glandulae areolares

Papilla mammaria

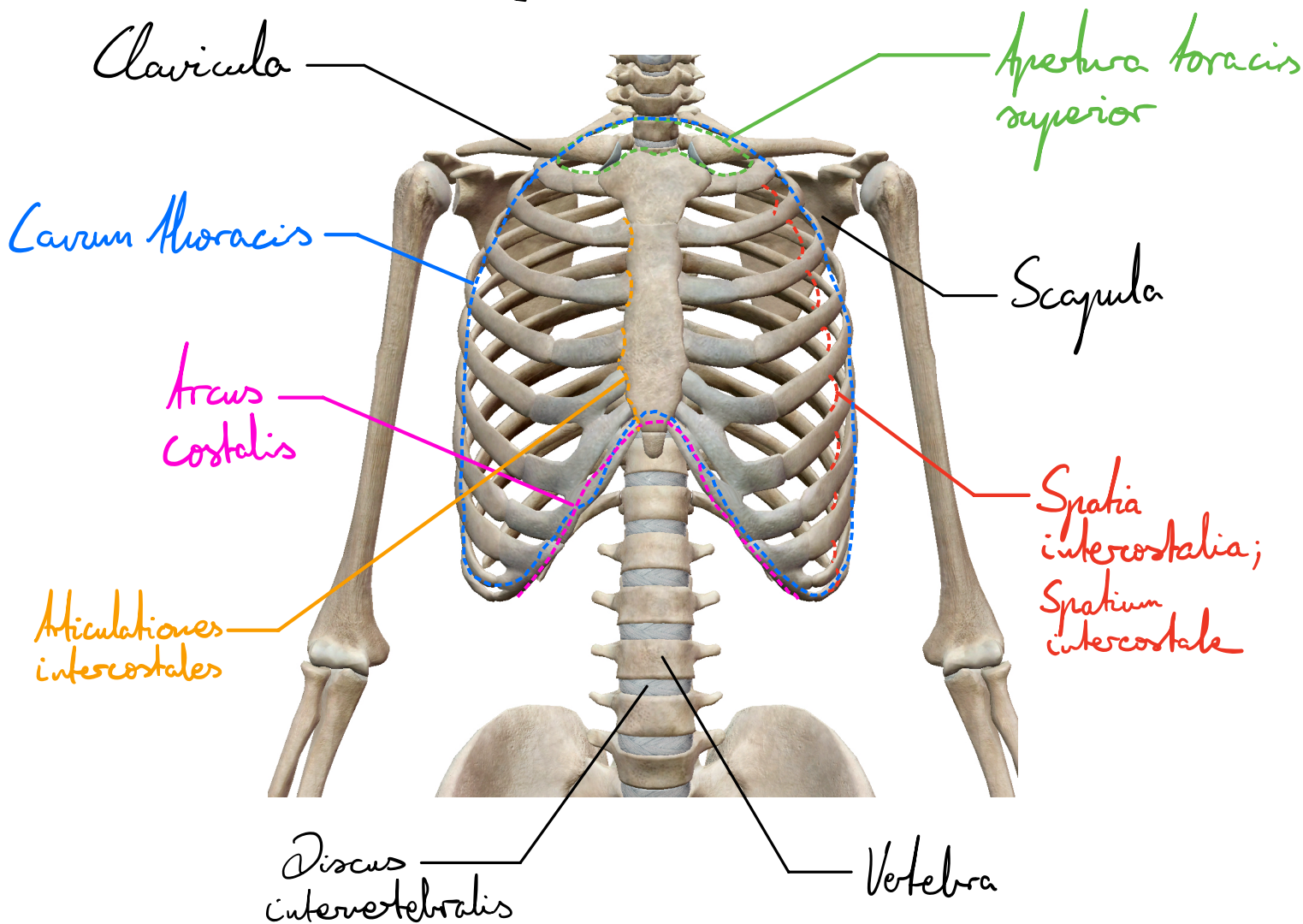


lobuli glandulae mammae

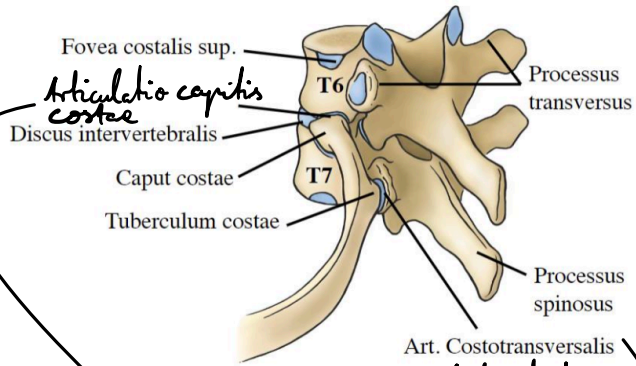
Ductus lactiferi

⇒ Ligamentum suspensoria mammae:
håller upp lobuli glandulae, fäster i clavicula och facia
oracoclaviculæris

Ben

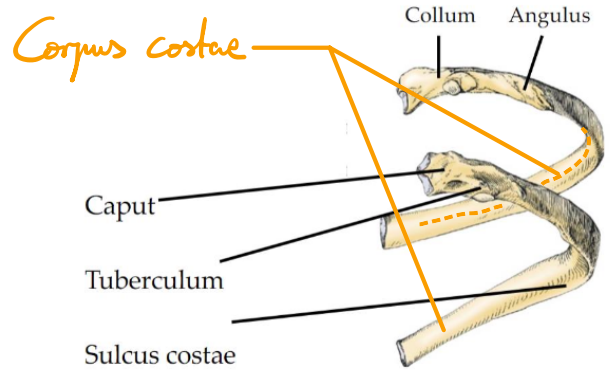


- *Costa verae*: Revben 1-7 med eget brosk mot sternum
- *Costa spuriae*: Revben 8-10 med gemensamt brosk mot sternum
- *Costa fluctuantes/librae*: Revben 11-12 utan brosk förbindelse med sternum
- *Cartilago costalis*: Brosk som förbindes revben med sternum



Articulationes costovertebrales

Art. Costotransversalis
↳ Articulatio

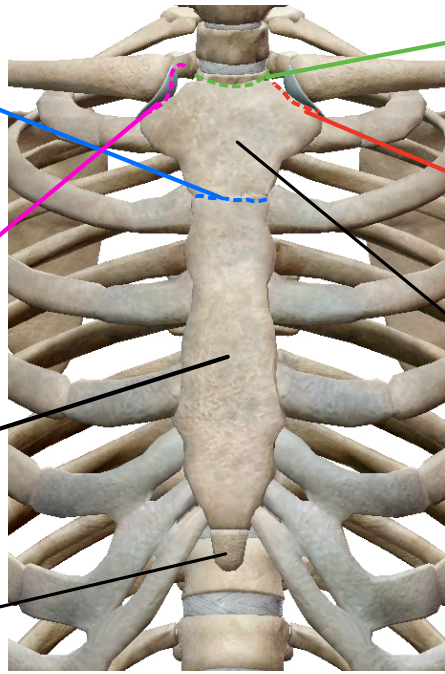


Synchondroses sterni
(hyaline brosk)

Art. sternoclaviculare

Corpus sterni

Processus xiphoideus

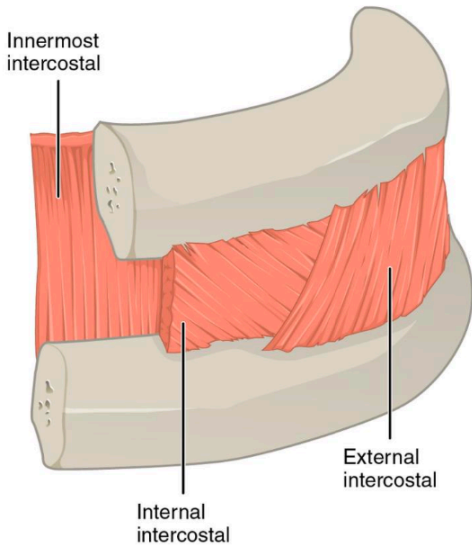


Incisura jugularis

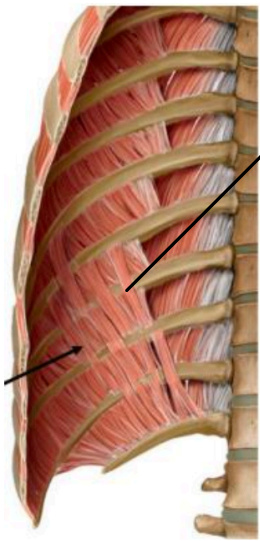
Incisura clavicularis

Manubrium sterni

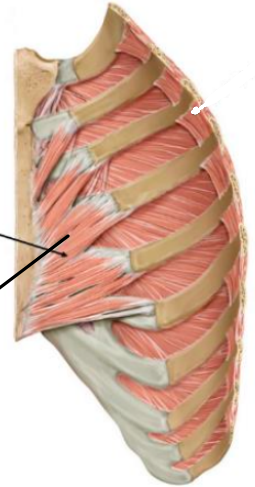
Muscles



- Musculus intercostales externus
→ Membrana intercostalis externa
- Musculus intercostales interni
→ Membrana intercostalis interna
- Musculus intercostalis intima

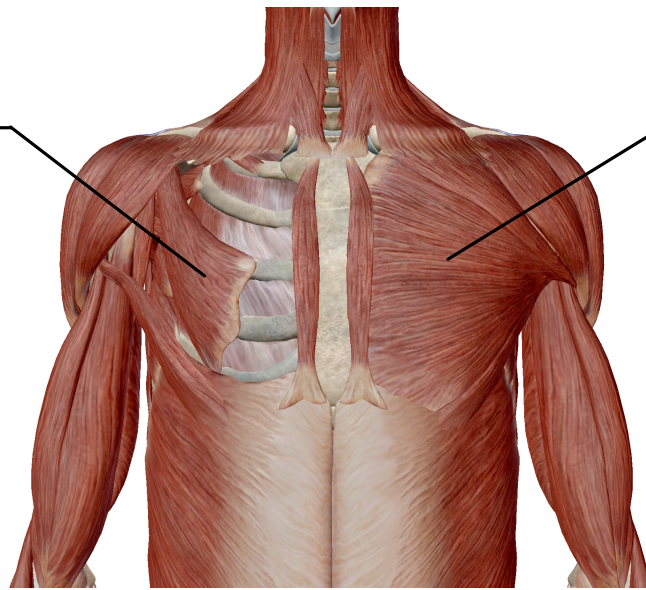


Musculus subcostales



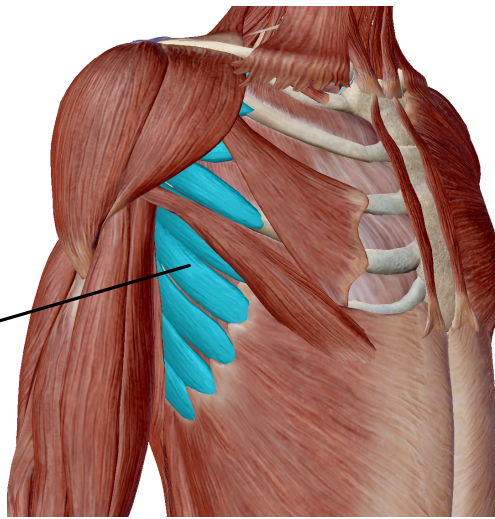
Musculus transversus thoracis

Musculus pectoralis minor



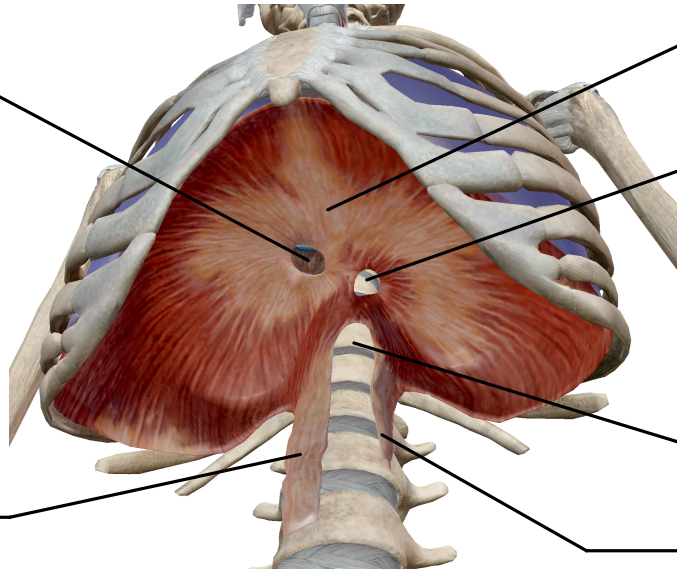
Musculus pectoralis major

M. serratus anterior



Foramen venae
cavae

Crus dextrum

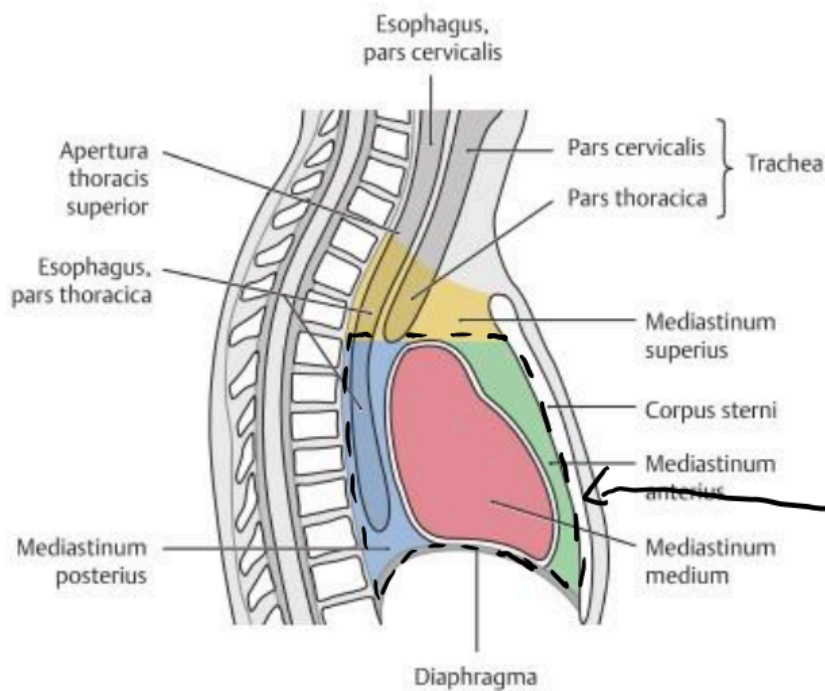


Centrum tendineum

Hiatus esofagus

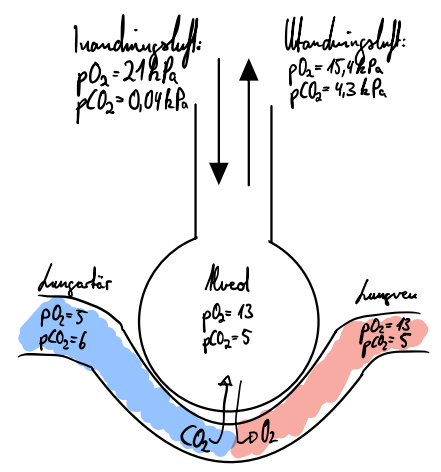
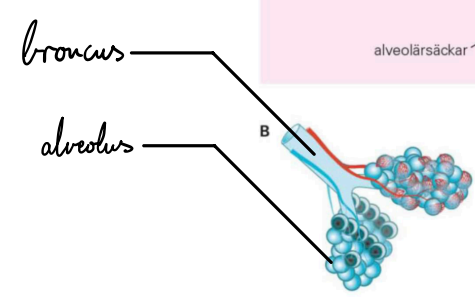
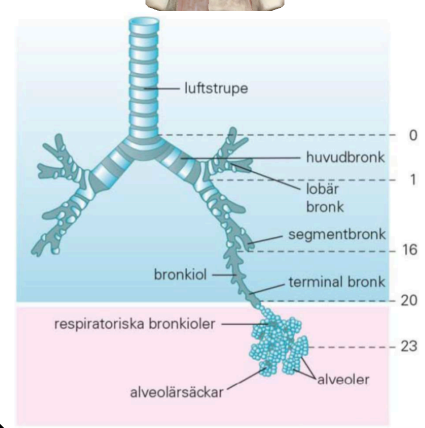
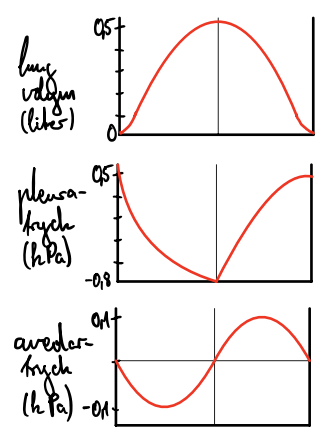
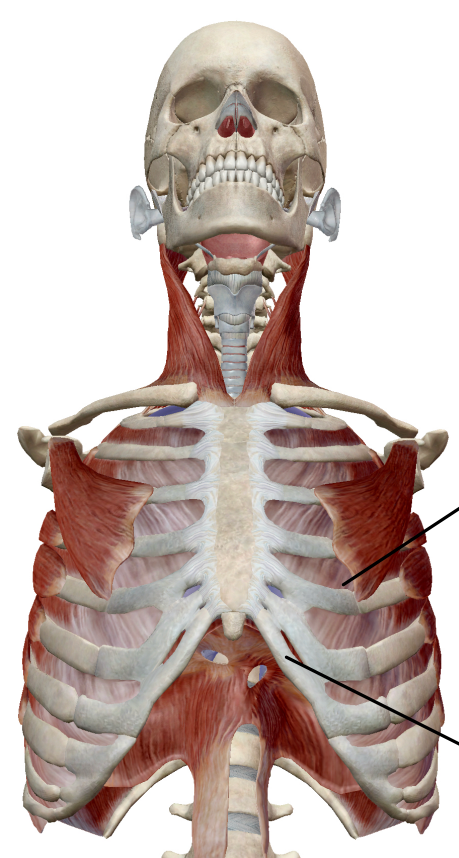
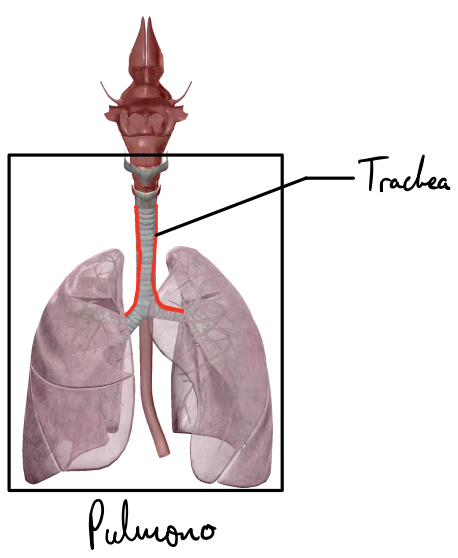
Hiatus aorticus

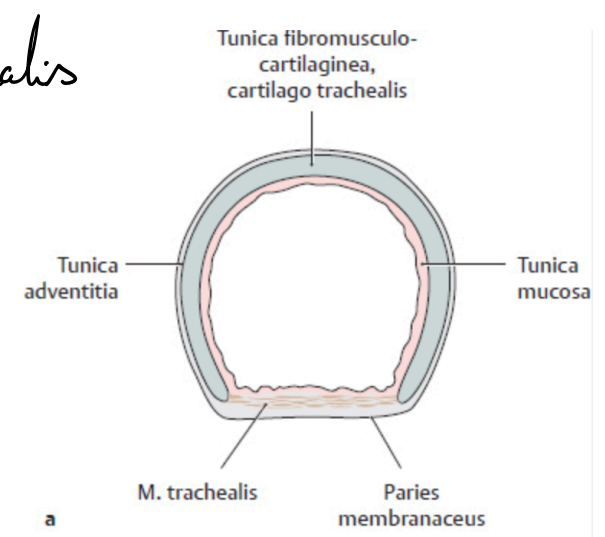
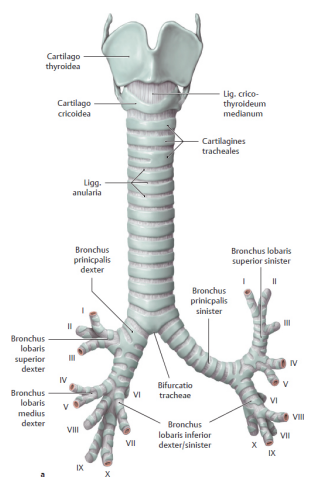
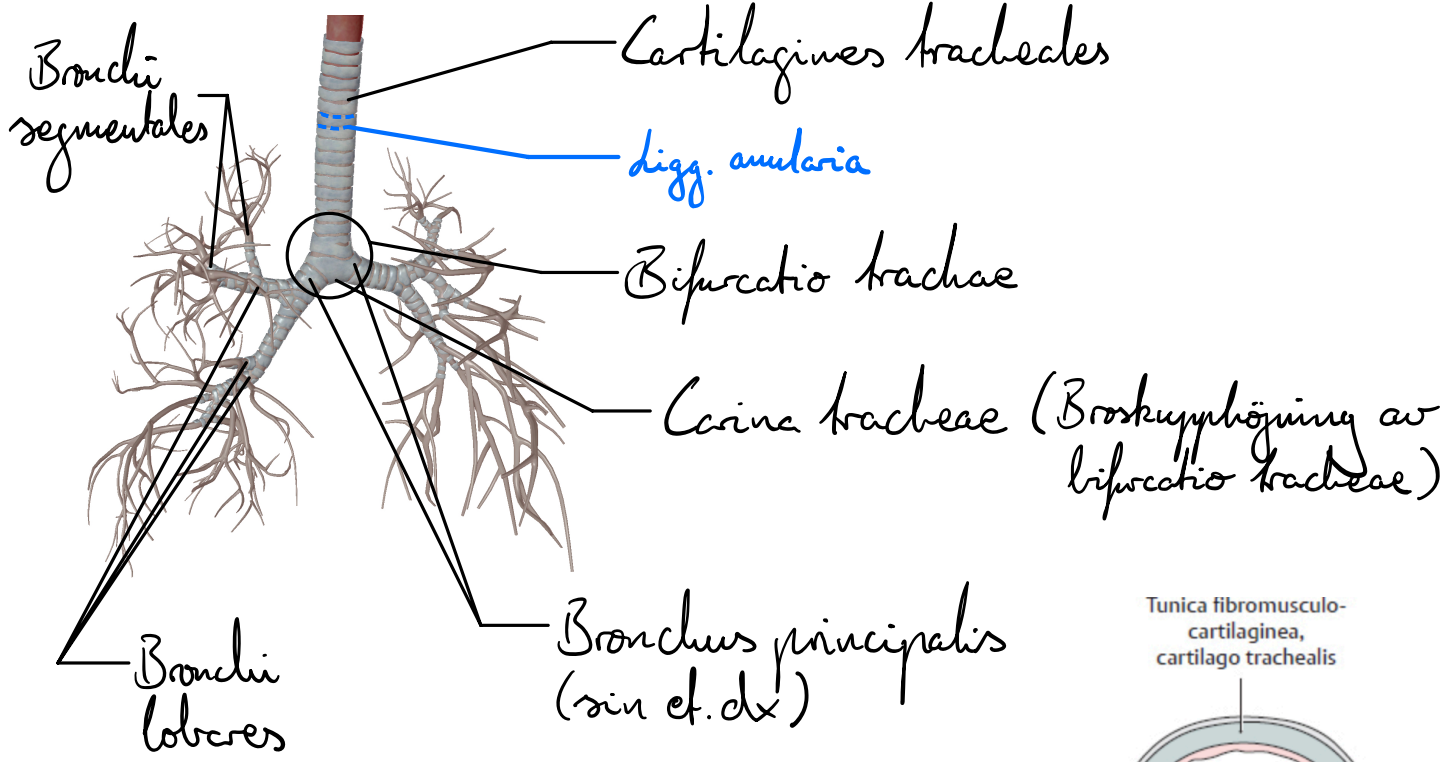
Crus sinistrum



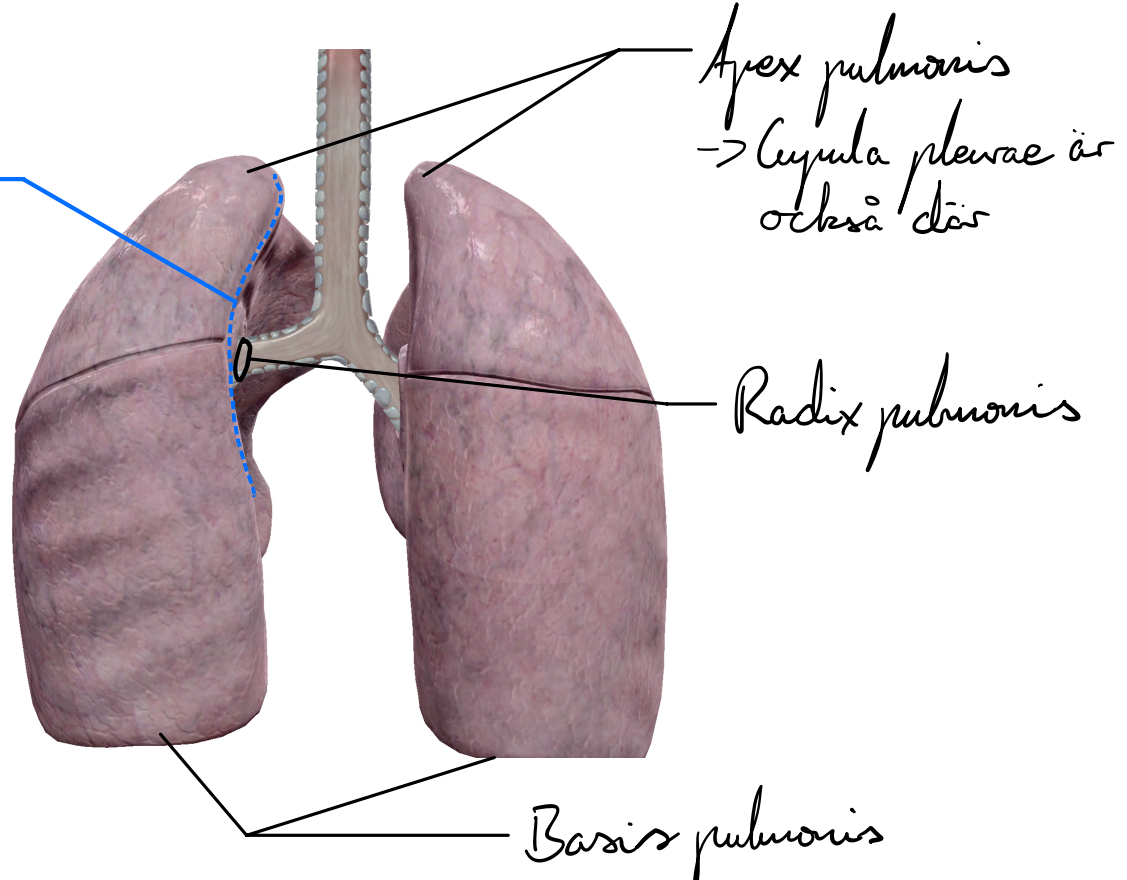
Mediastinum
inferius

Lungor

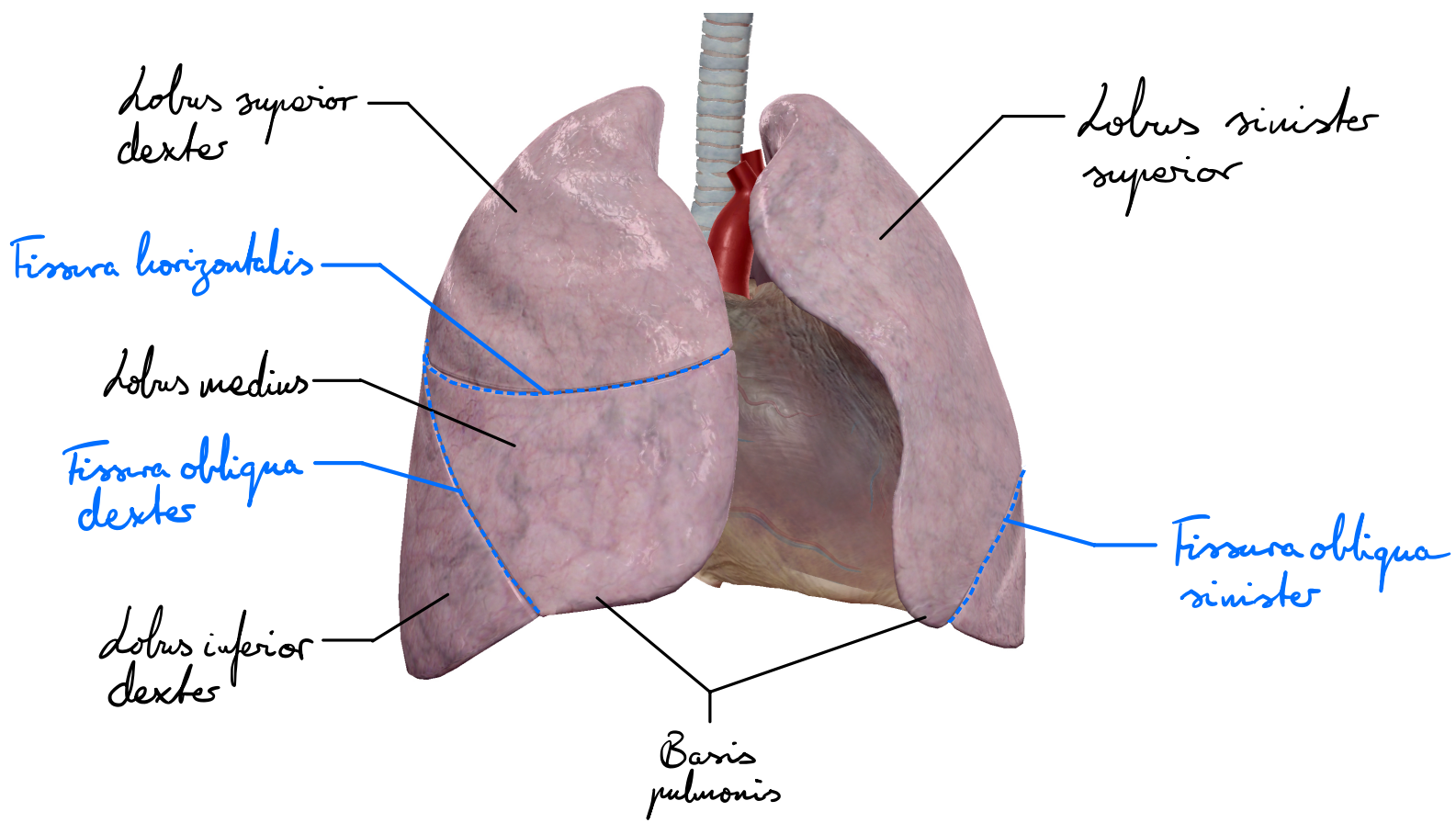




Hilum pulmonis

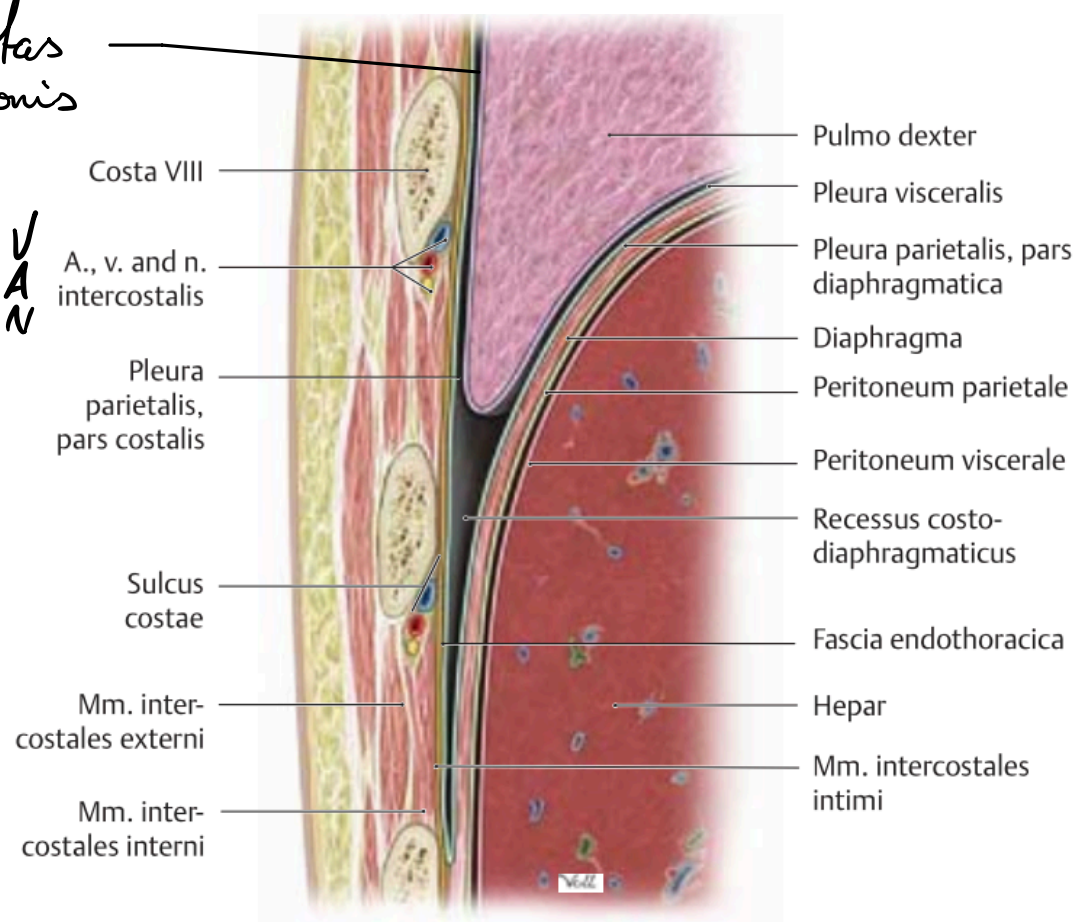


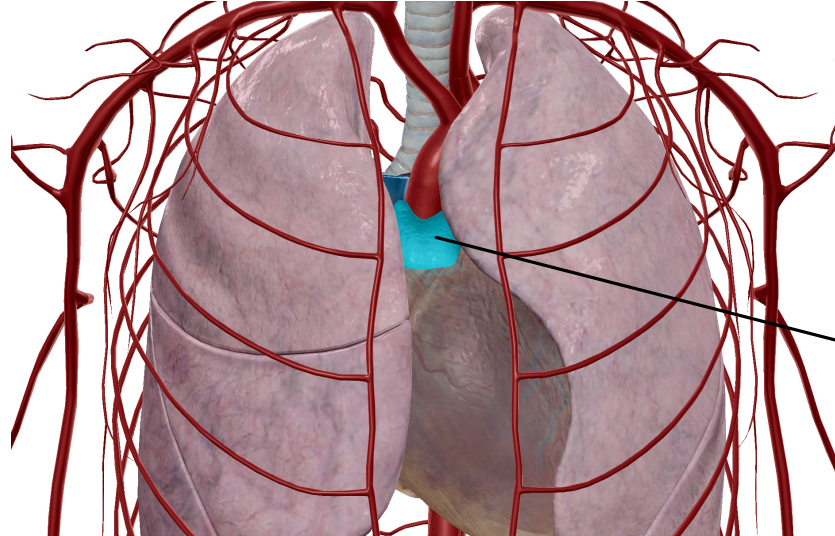
Minnesregel:
 Right anterior
 Left superior



Cavitas
 pulmonis

V
 ↓
 A
 ↓
 N

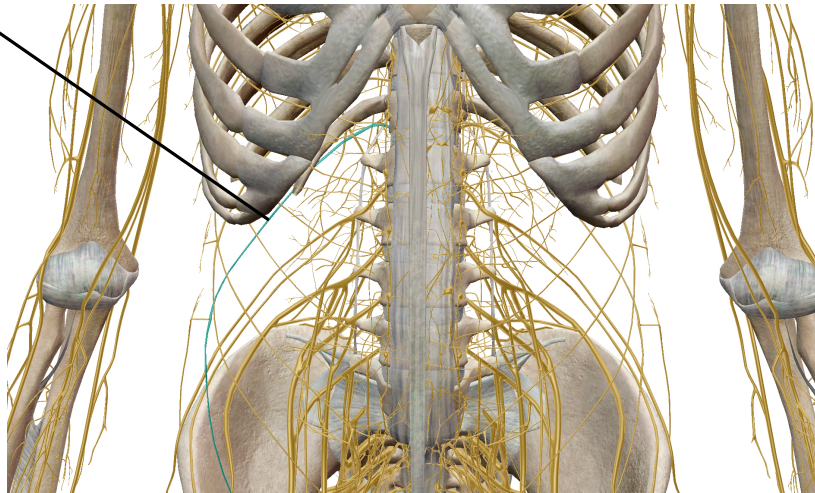




Thymus

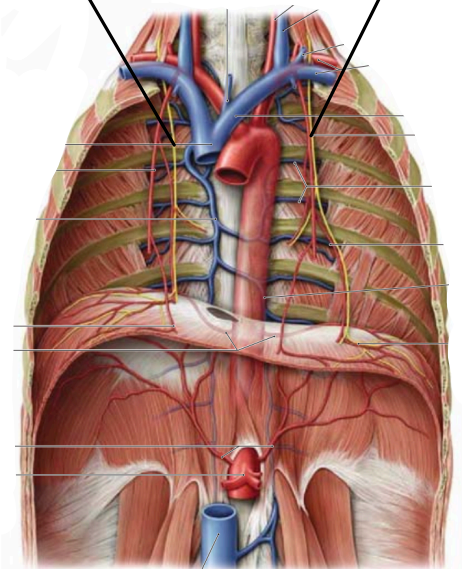
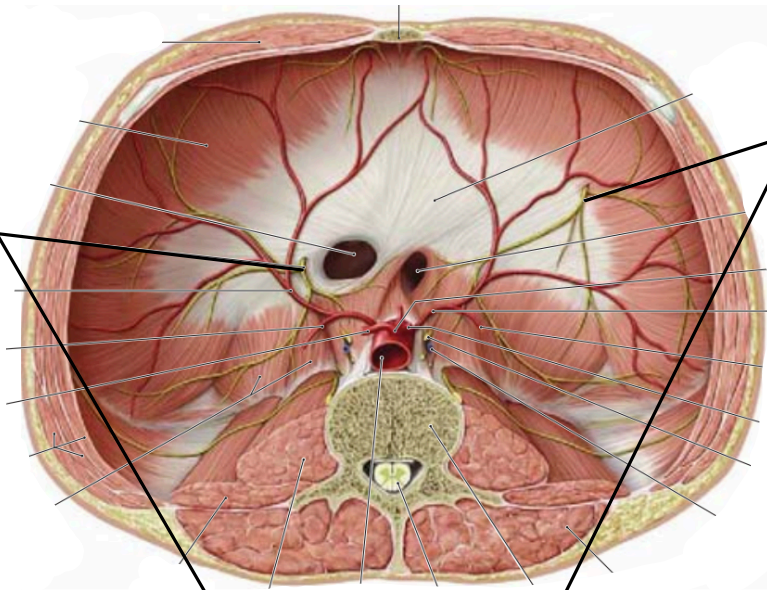
Nerve

Nervus
subcostalis

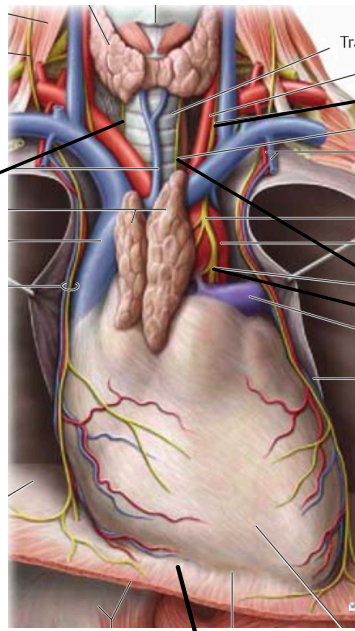


Nervus
phrenicus
dexter

Nervus
phrenicus
sinister

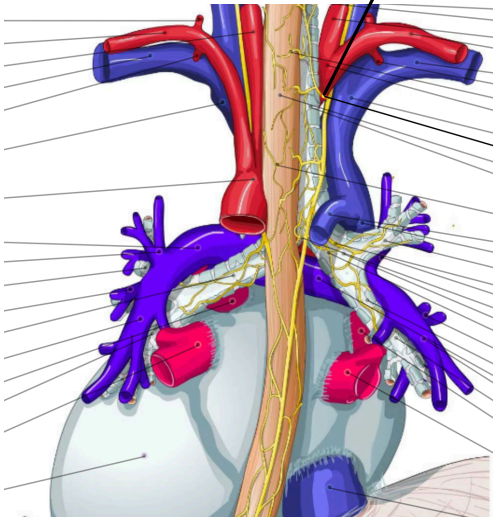


N. laryngeus recurrens dexter



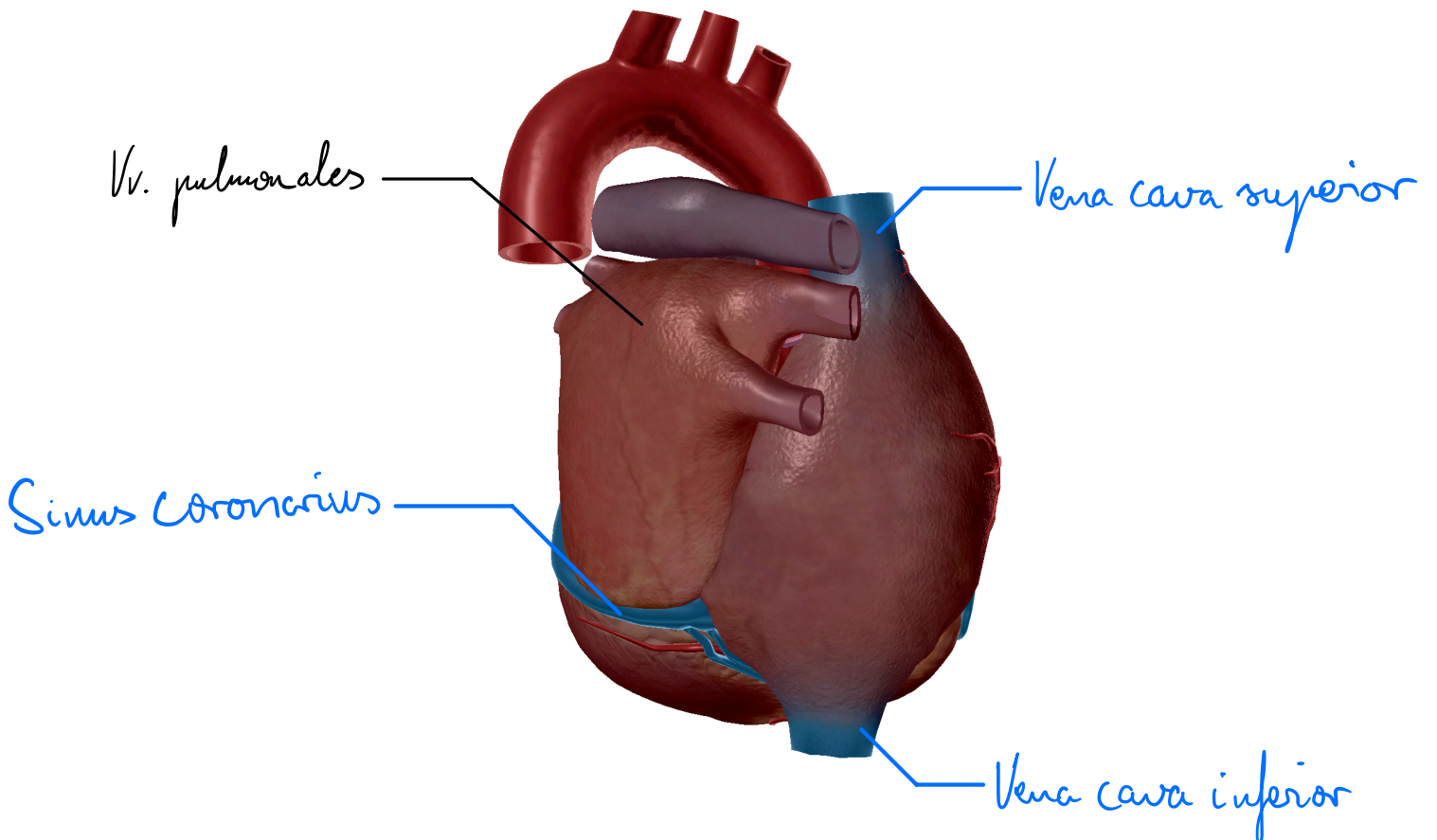
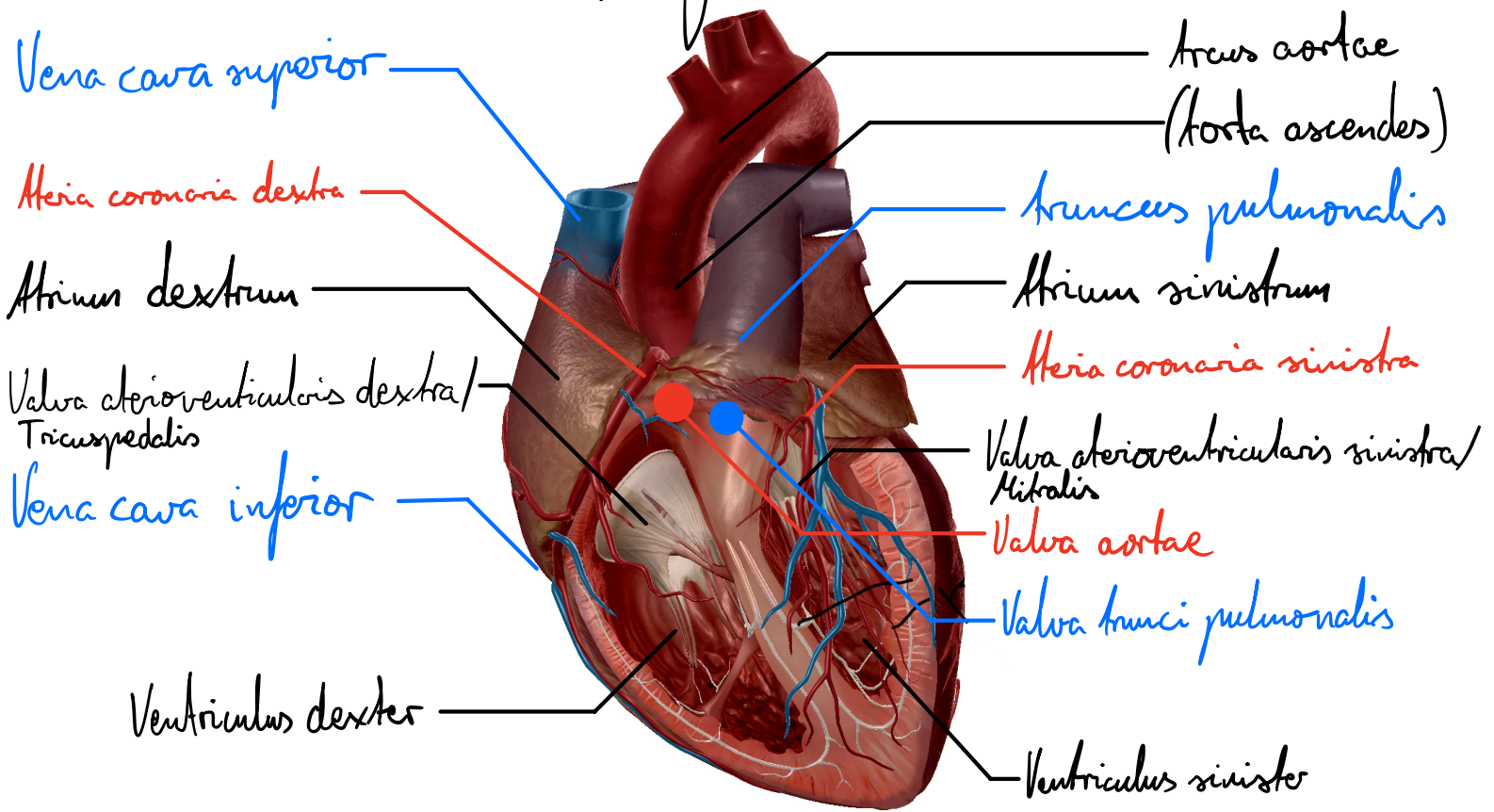
N. vagus

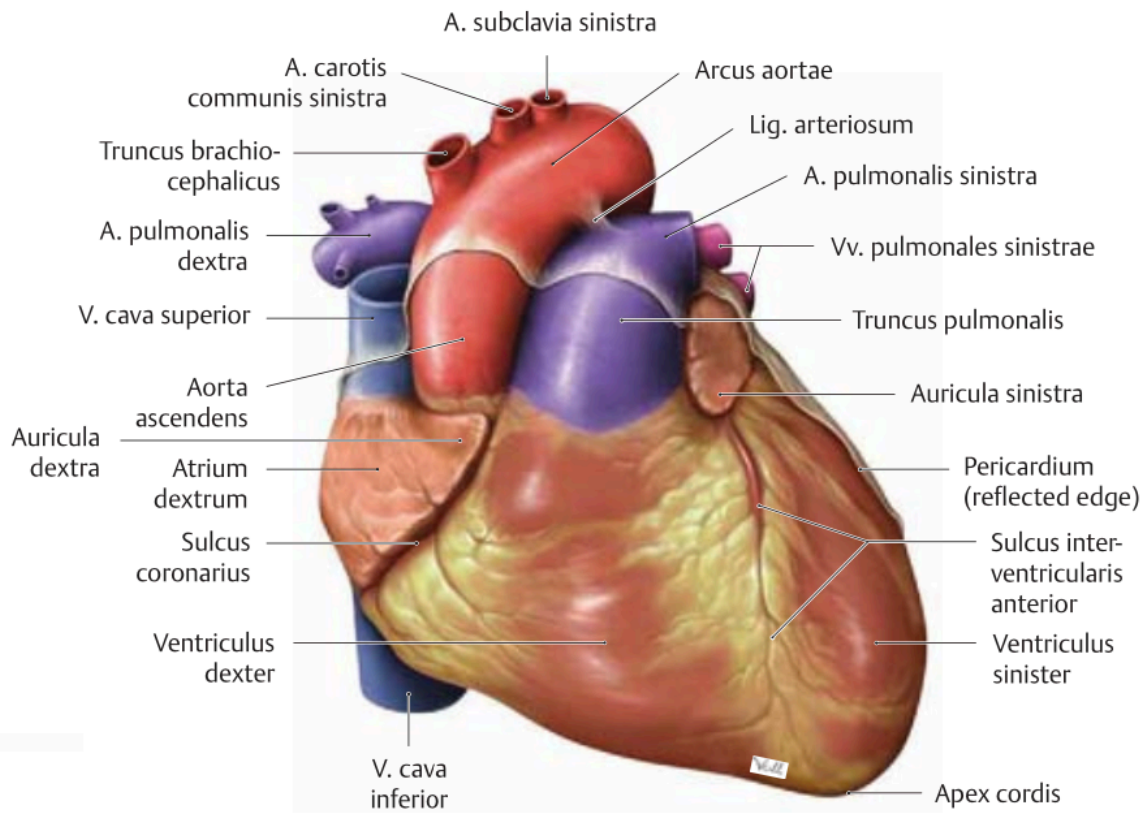
N. laryngeus recurrens sinister



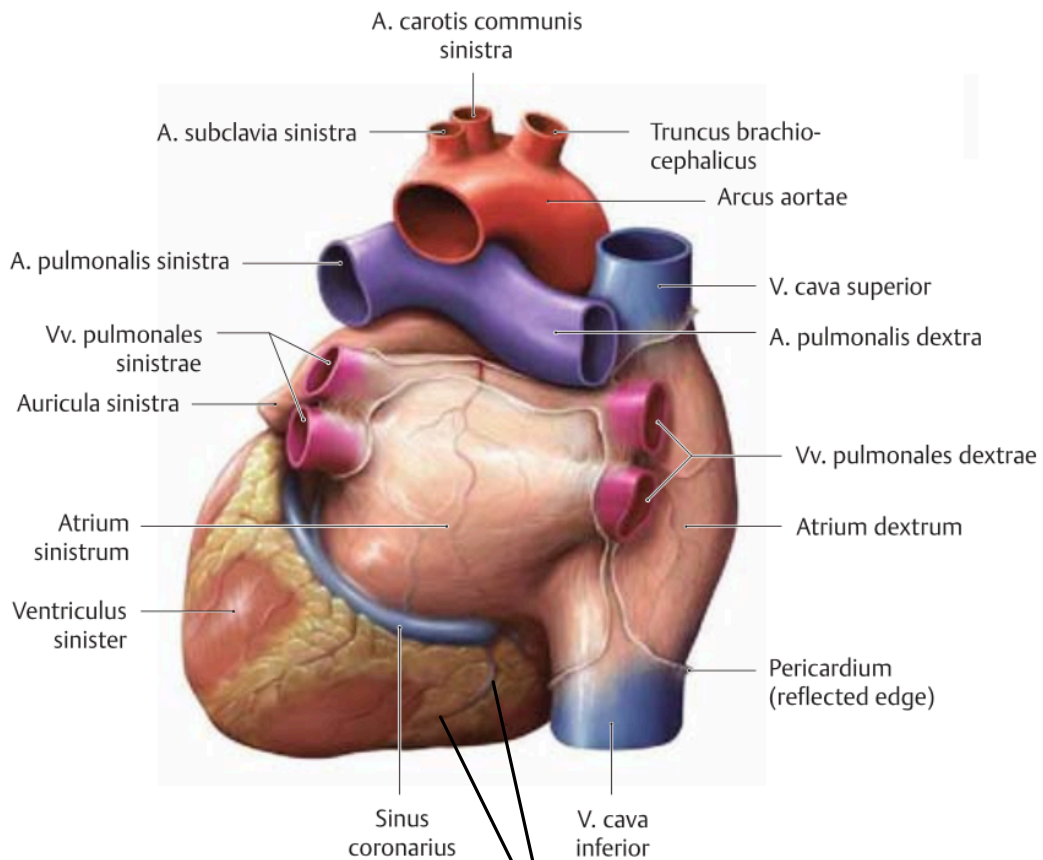
dig. pericardicophrenica

Hjärta



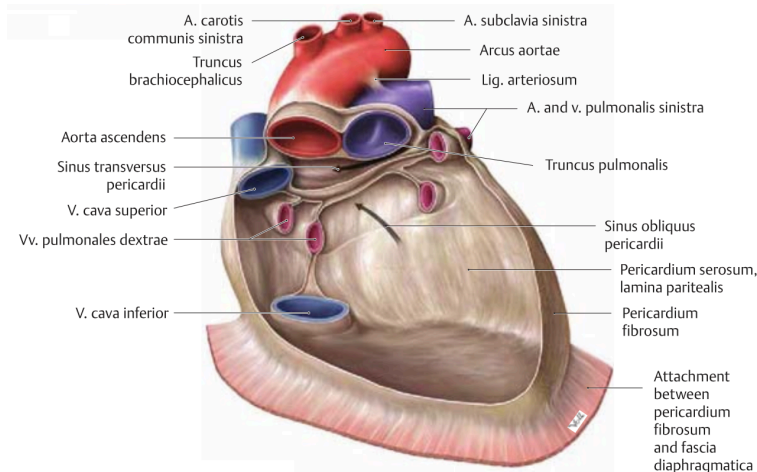
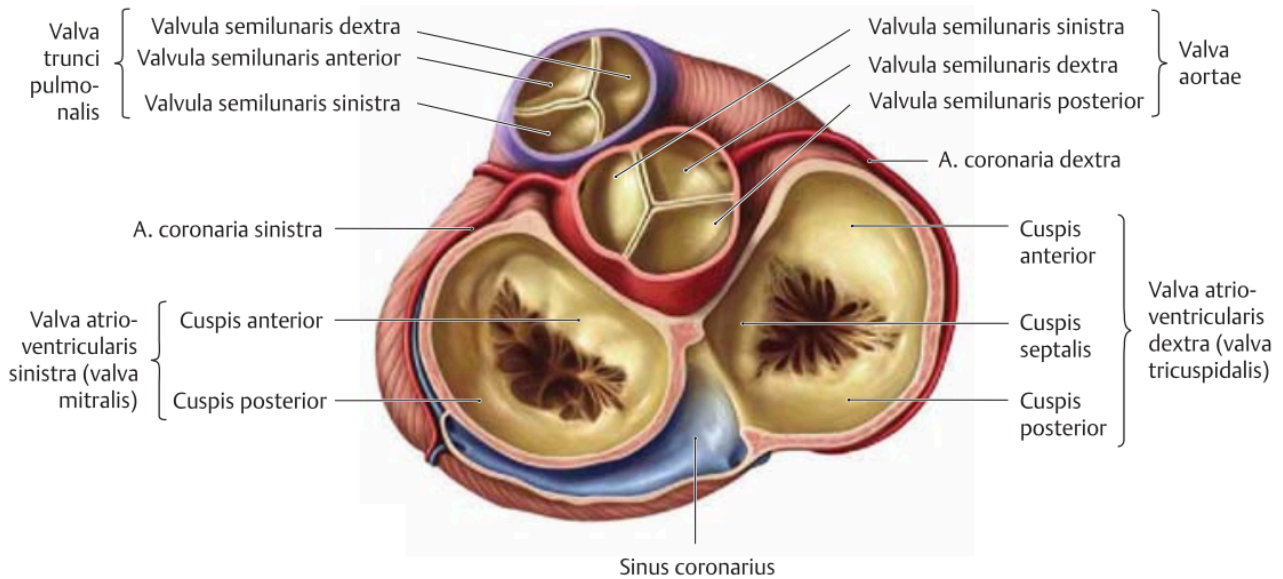
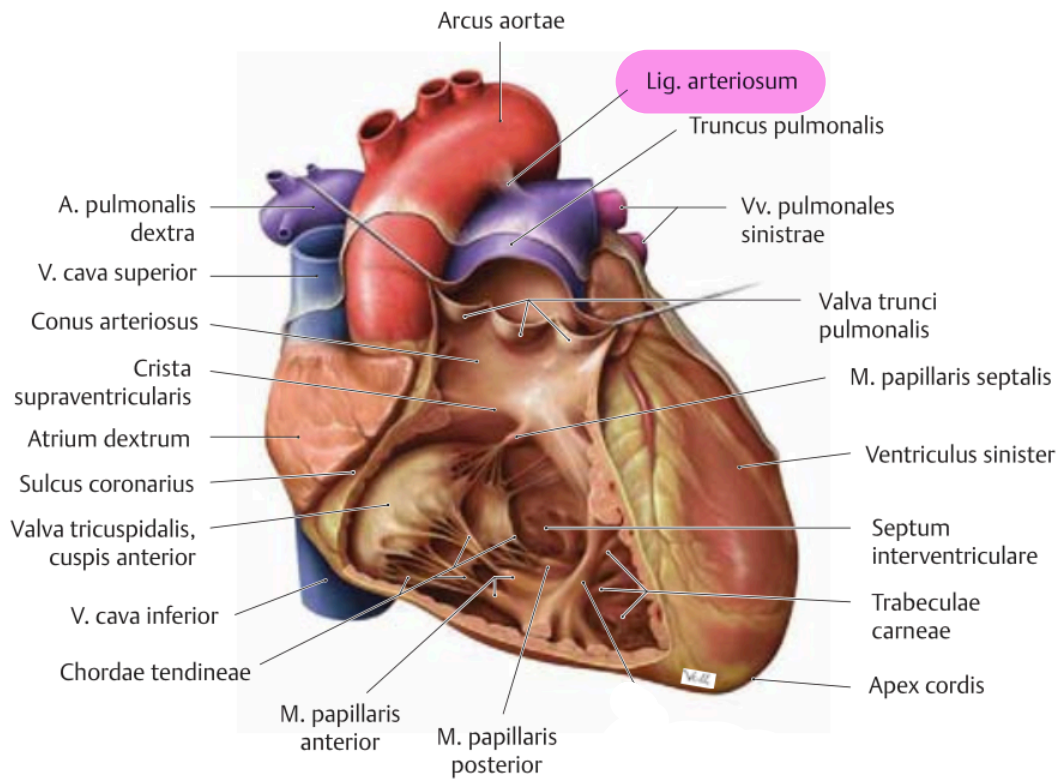


A Anterior surface (facies sternocostalis).

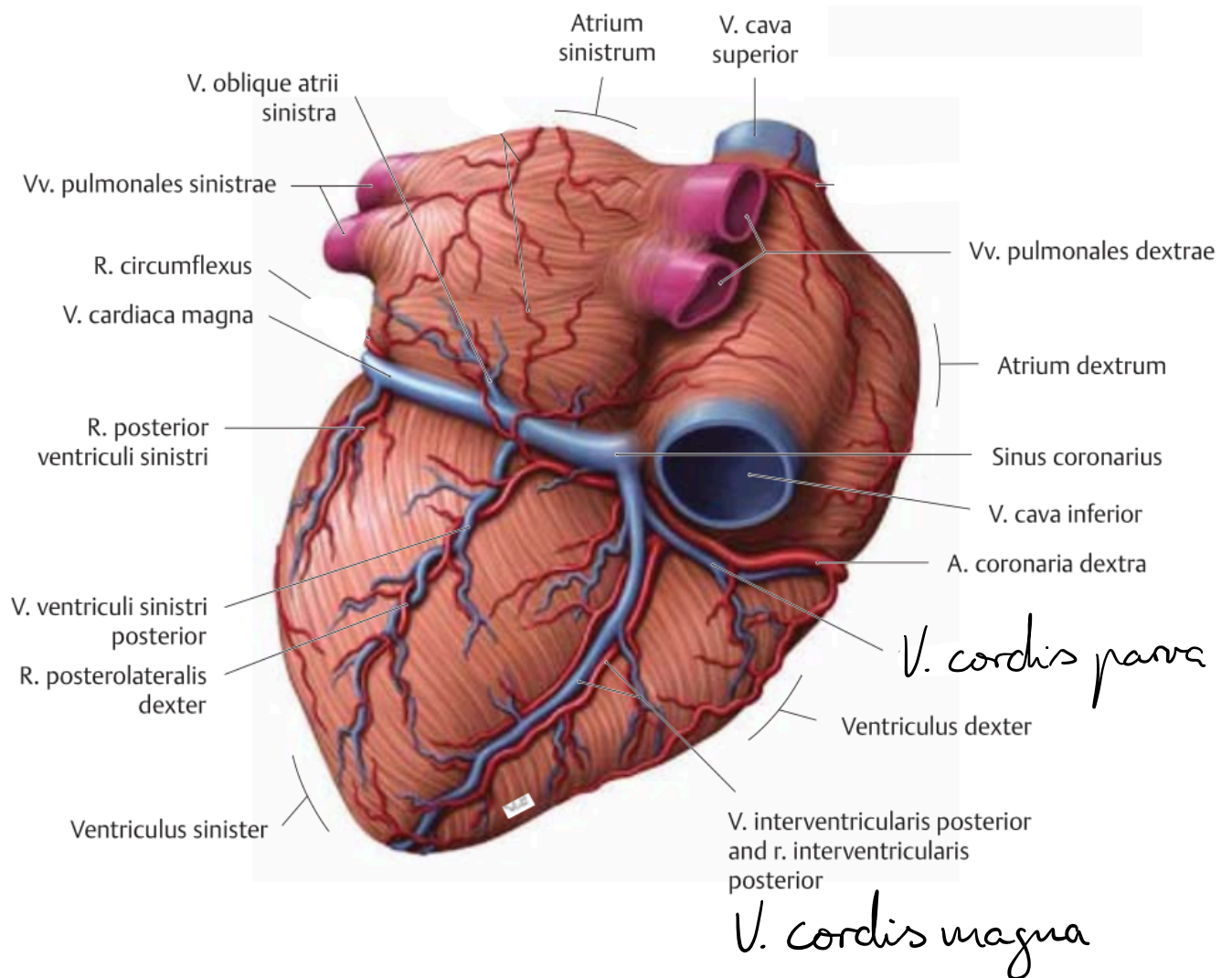
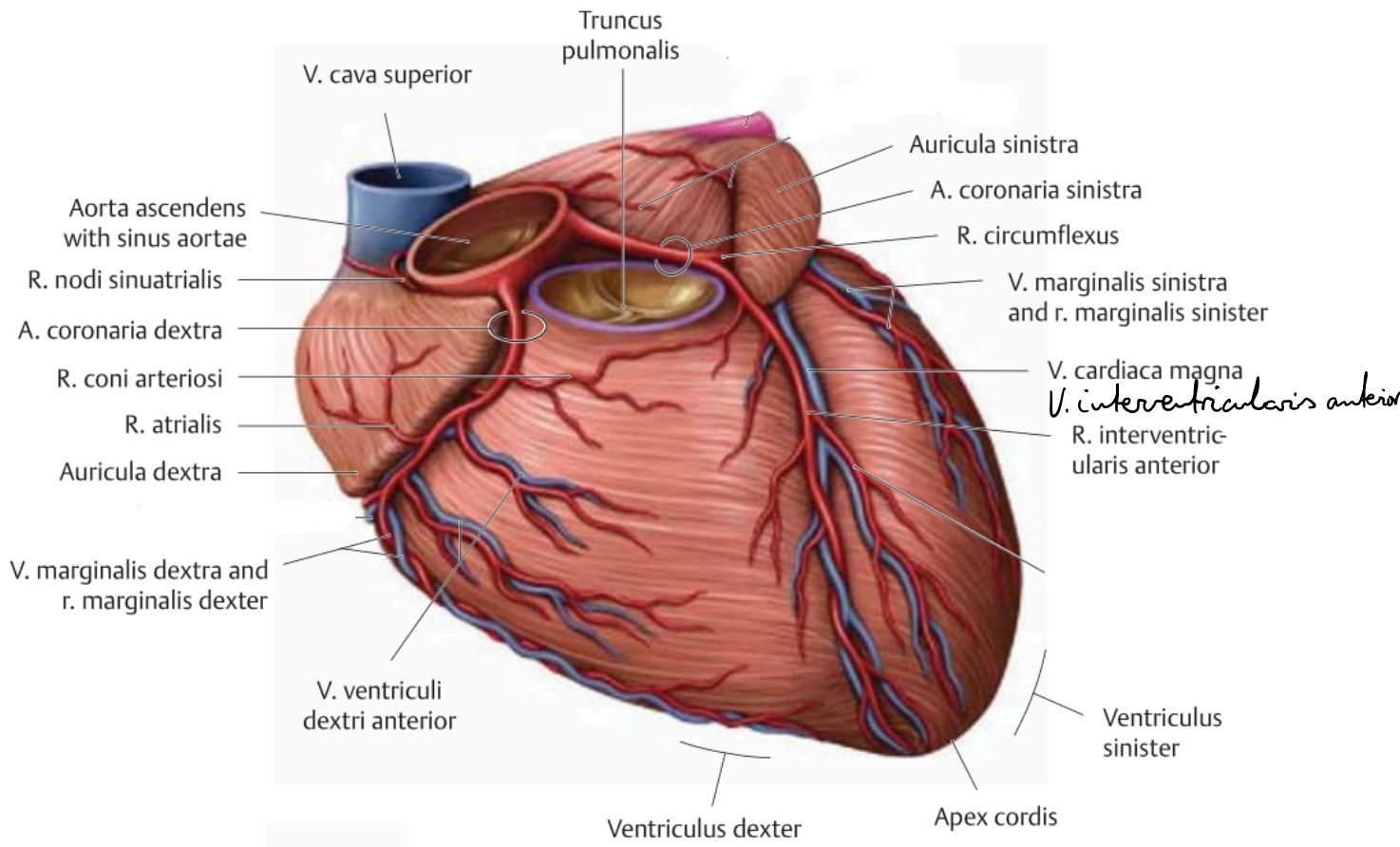


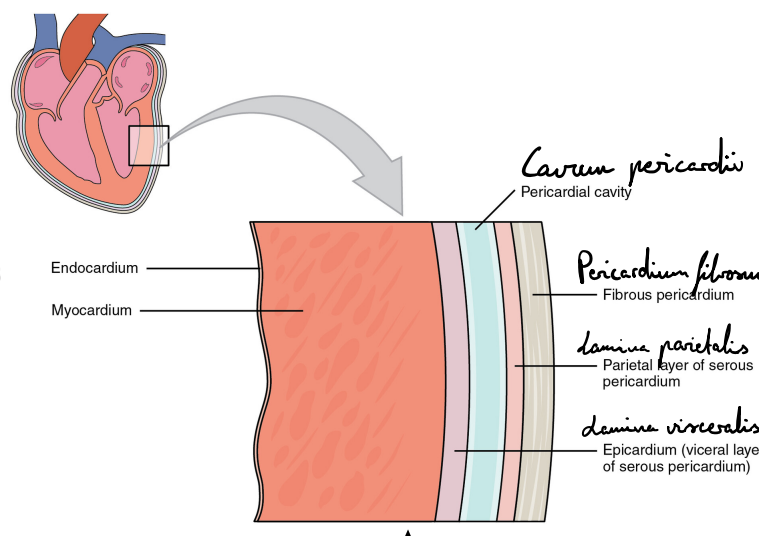
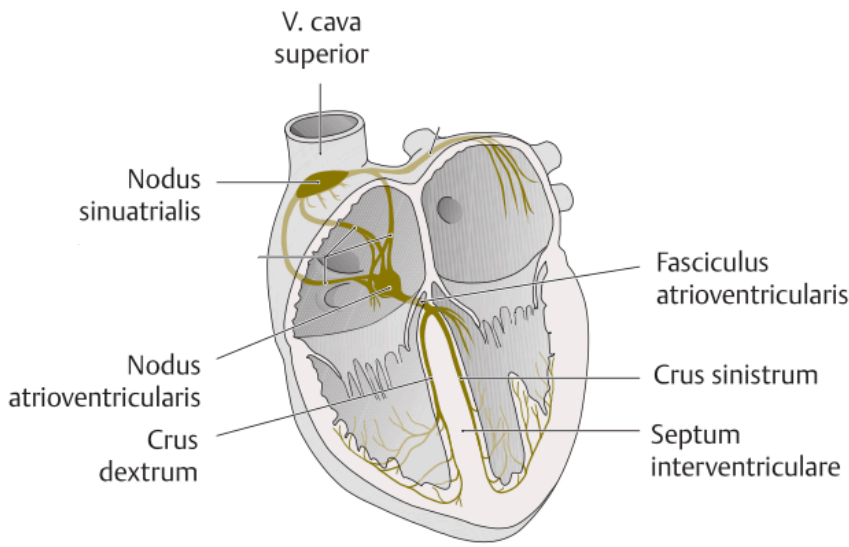
B Posterior surface (basis cordis).

Sulcus interventricularis posterior

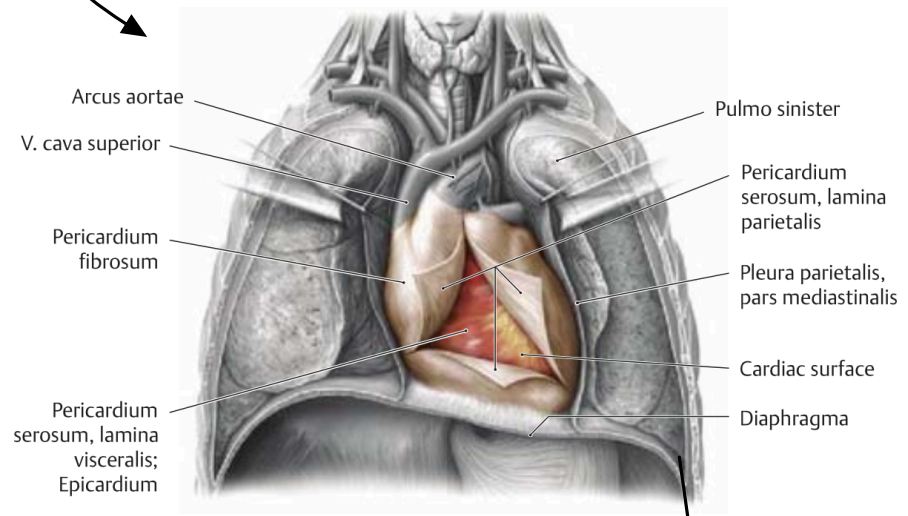


B Pericardium with heart removed, anterior view.





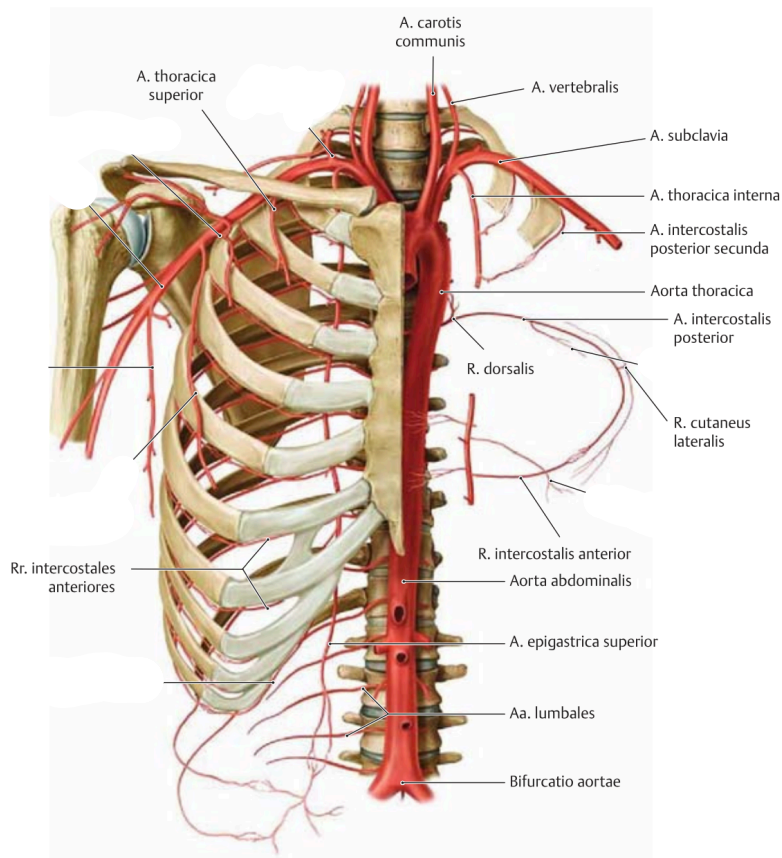
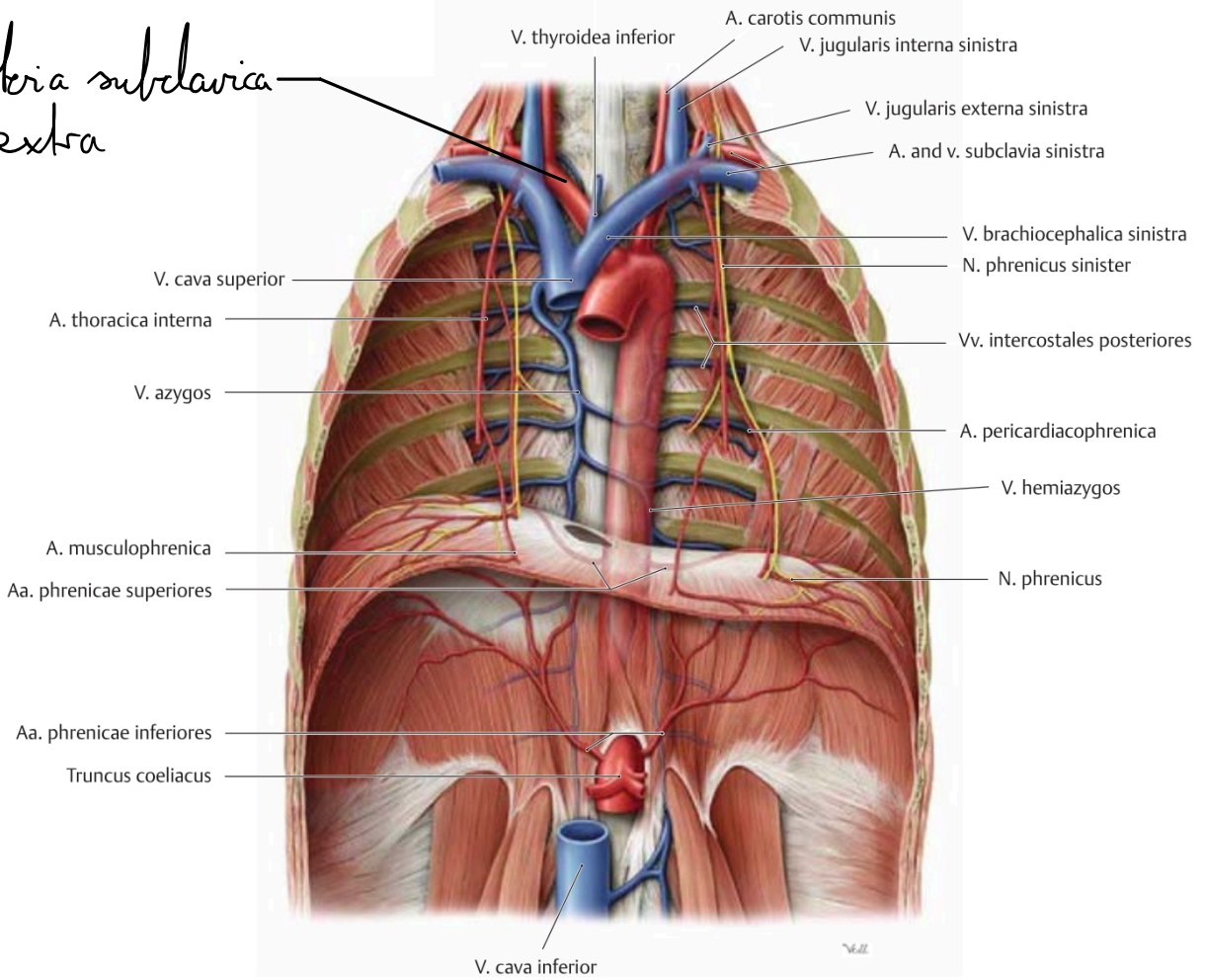
Pericardium

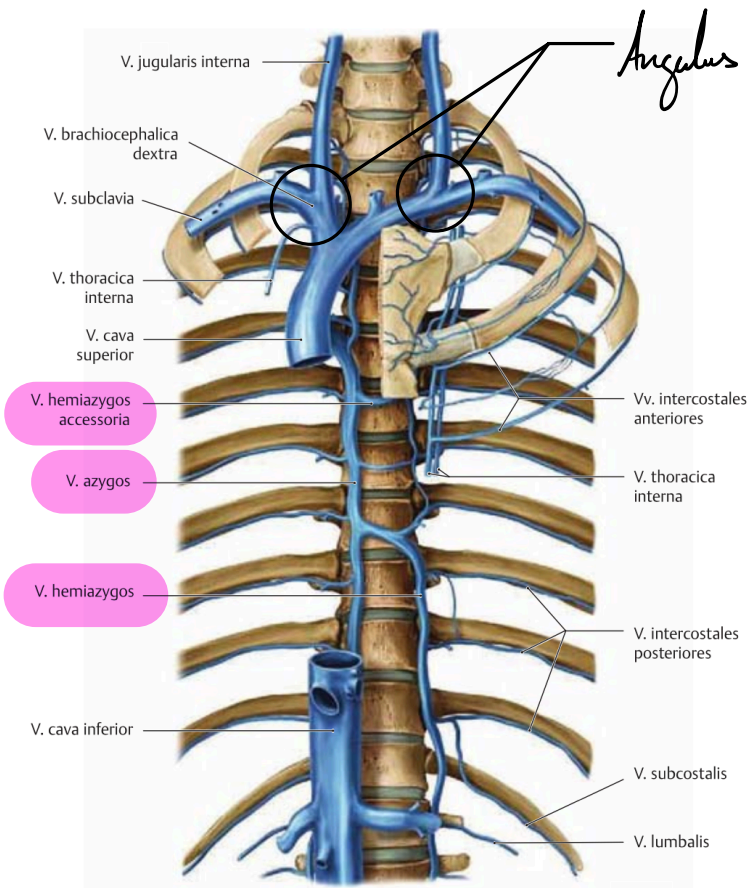


Recessus costodiaphragmaticus

Circulation

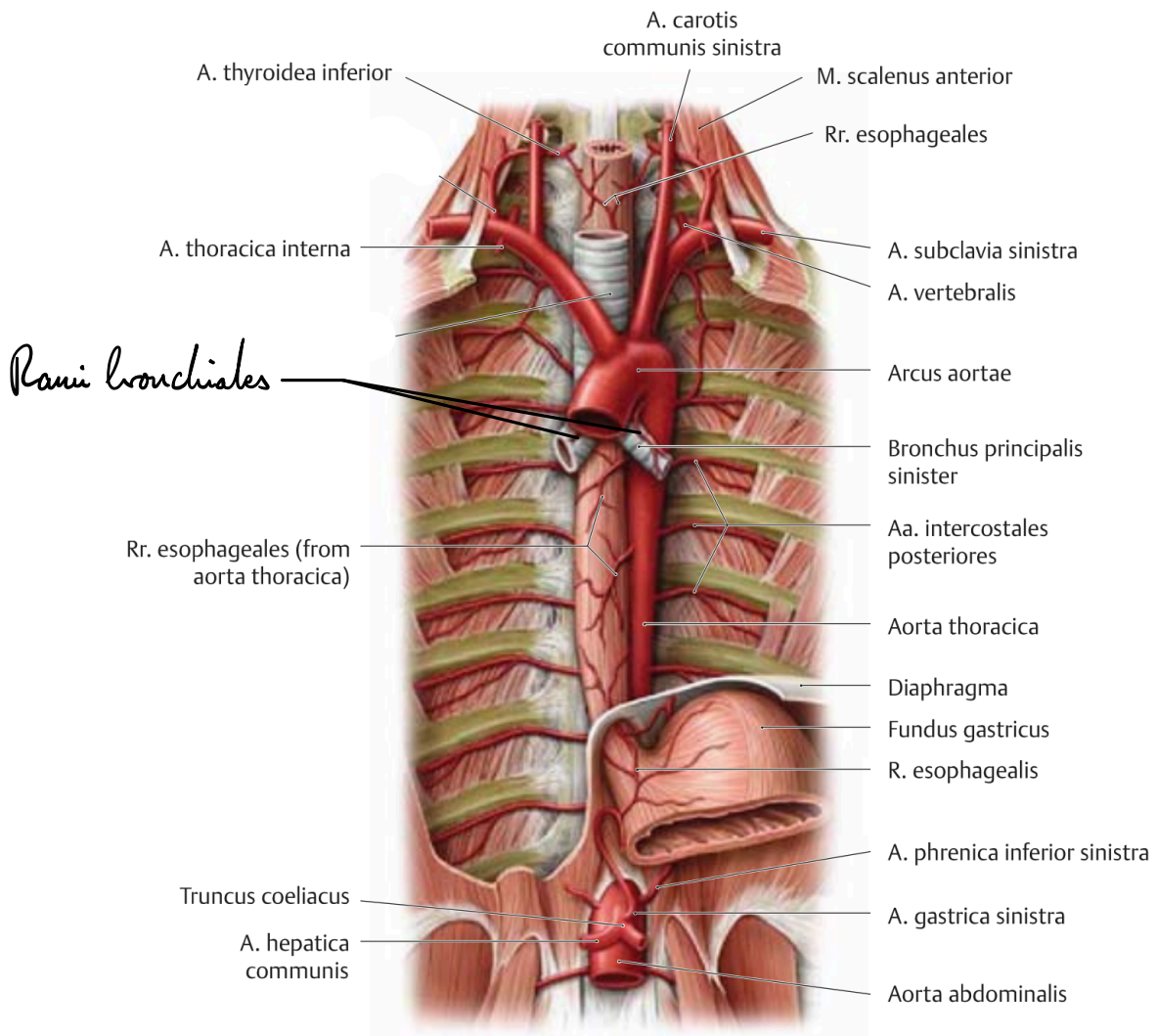
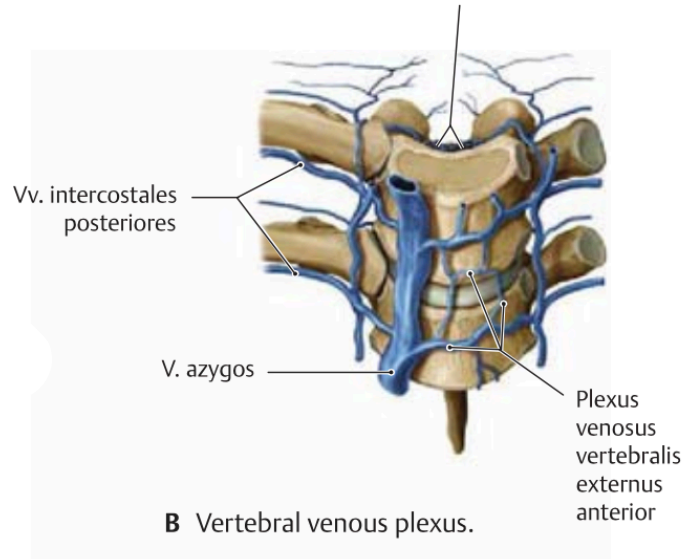
*Arteria subclavica
dextra*



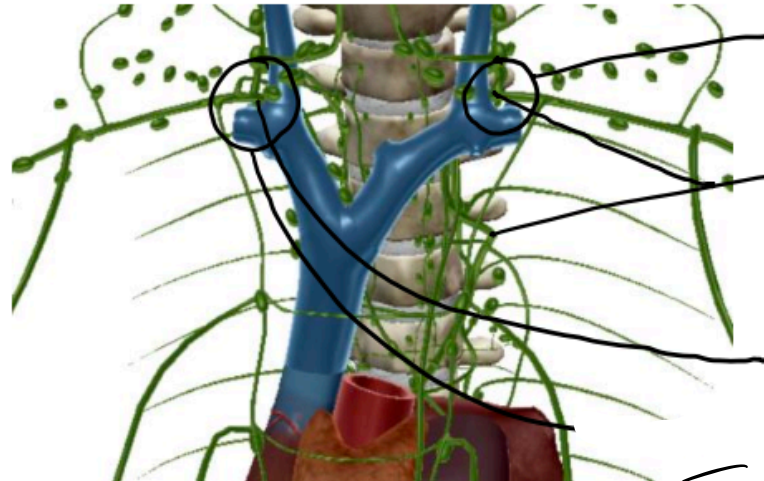


Angulus venosus

Plexus venosus vertebralis internus anterior et posterior

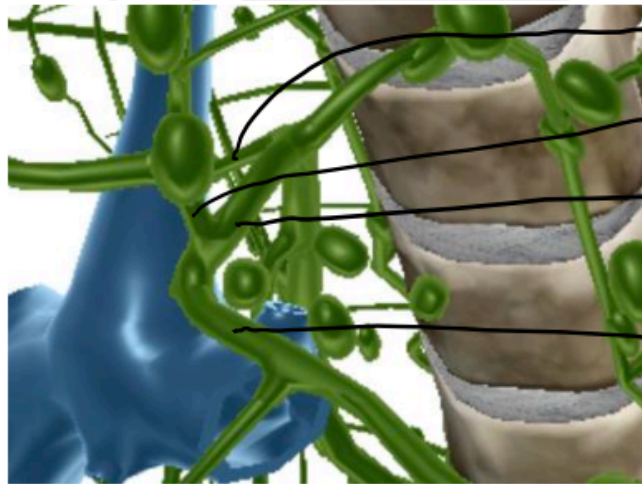


Lymphatisches System



Ductus thoracicus

Ductus lymphaticus dexter

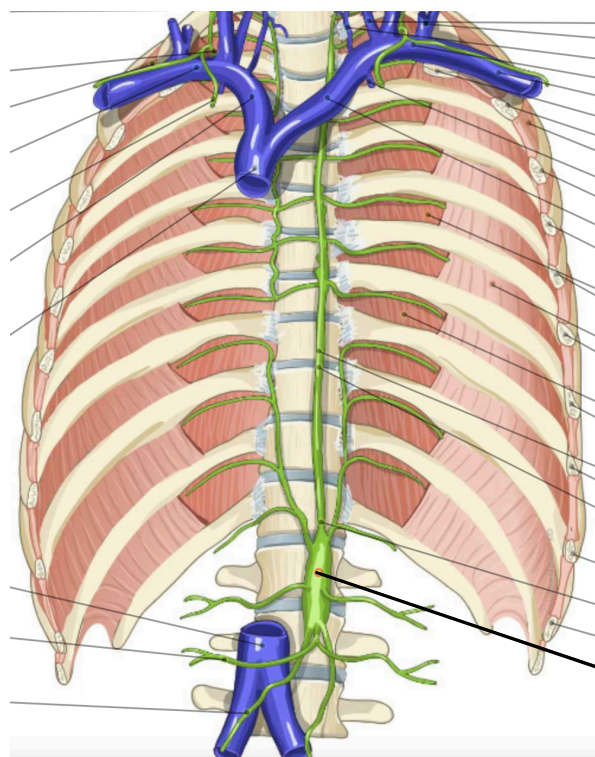


Truncus brachio-mediastinalis

Truncus jugularis

Ductus thoracicus

Truncus subclavicus



Cisterna chyli