

# Hej och välkommen till mina anatomidokument!

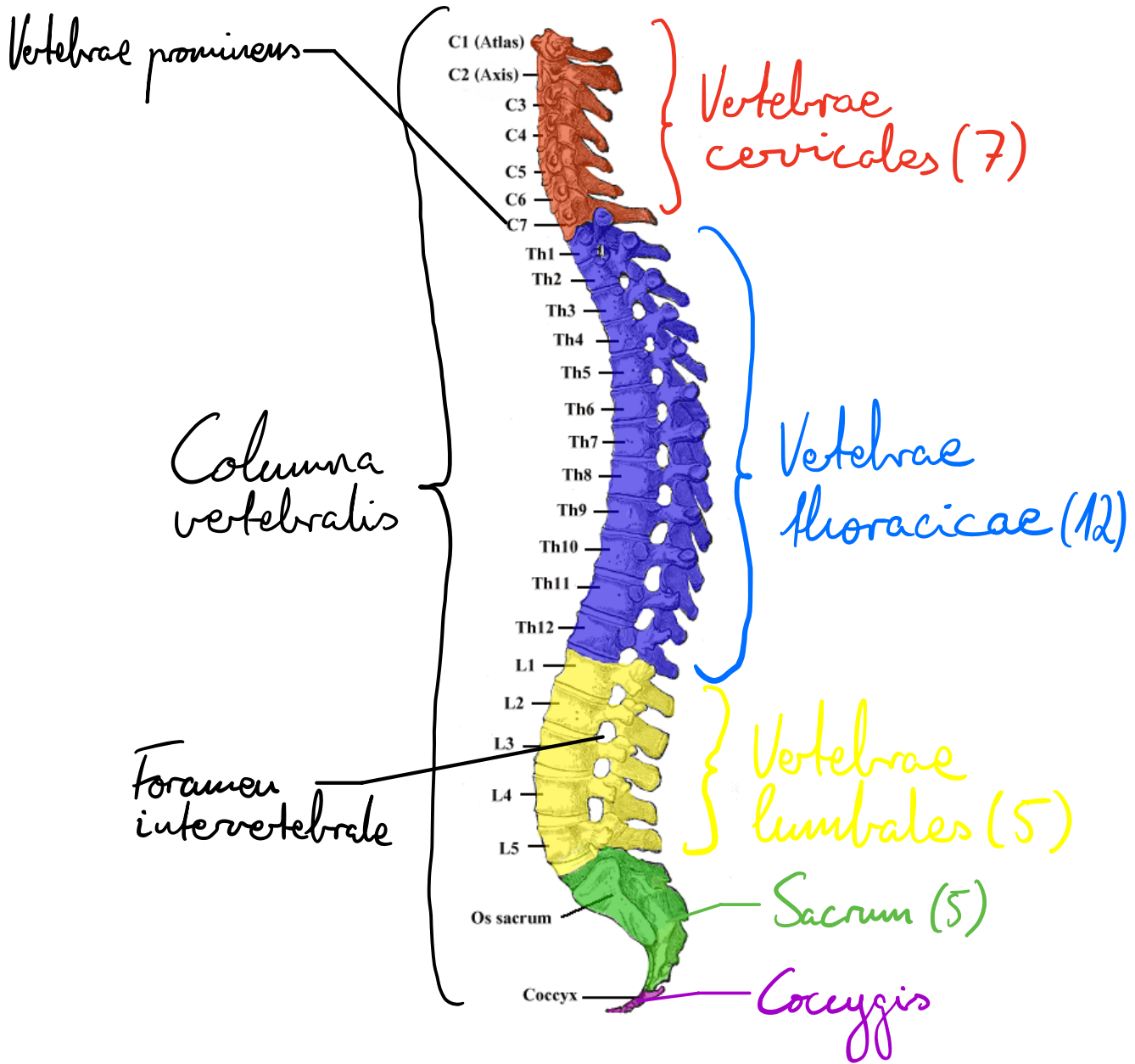
---

Dessa dokument är sammanställda baserat på vår strukturlista för kurserna BV3 och BV4 från VT 2024. Jag har gjort mitt bästa för att inkludera alla relevanta strukturer, men strukturlistan kan ha ändrats för er termin, så se till att kontrollera eventuella skillnader och fel som jag kanske har gjort.

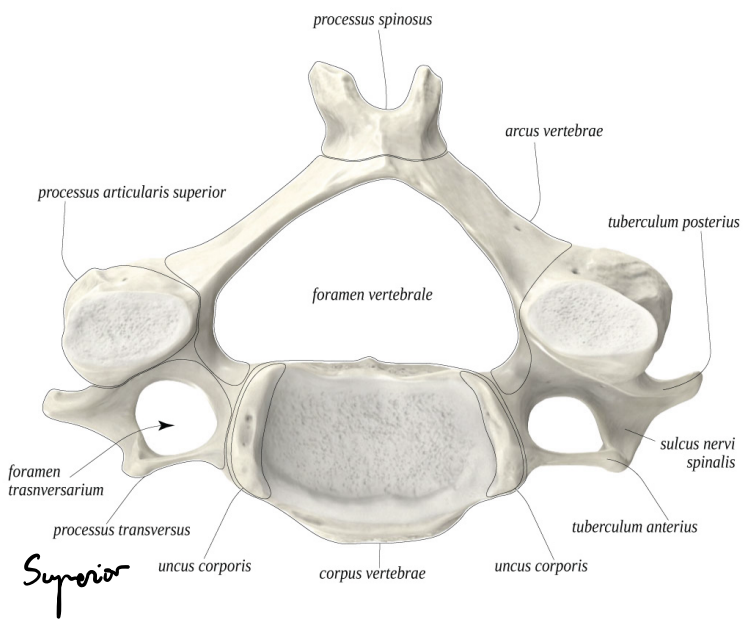
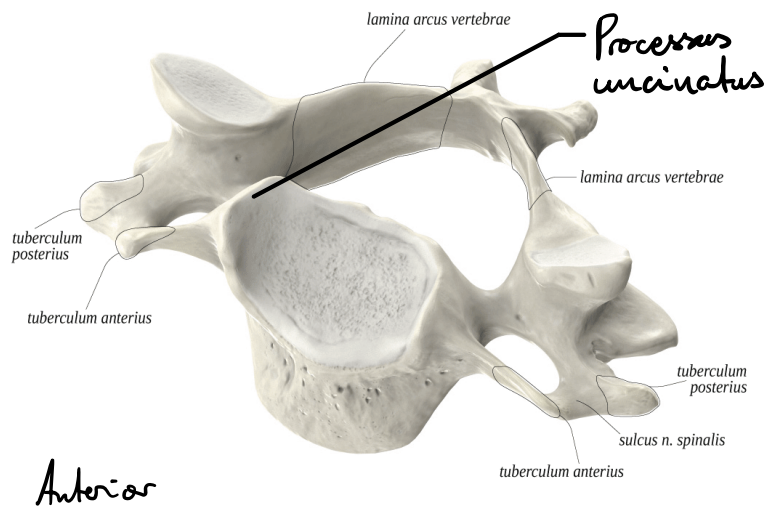
En sak att notera är att min handstil ibland kan vara svår att läsa. Intressant nog visar studier att text som är svår att läsa kan förbättra inläringen och minnet. Du kan läsa mer om detta i artiklar från Harvard Business Review ([Hard to Read Fonts Promote Better Recall](#)) och Princeton University ([Font focus: Making ideas harder to read may make them easier to retain](#)).

Jag önskar dig lycka till med kurserna BV3 och BV4. De kan verka utmanande ibland, men med engagemang och hårt arbete är de definitivt genomförbara. Jag hoppas att dessa dokument kan vara till hjälp i dina studier.

# Beu

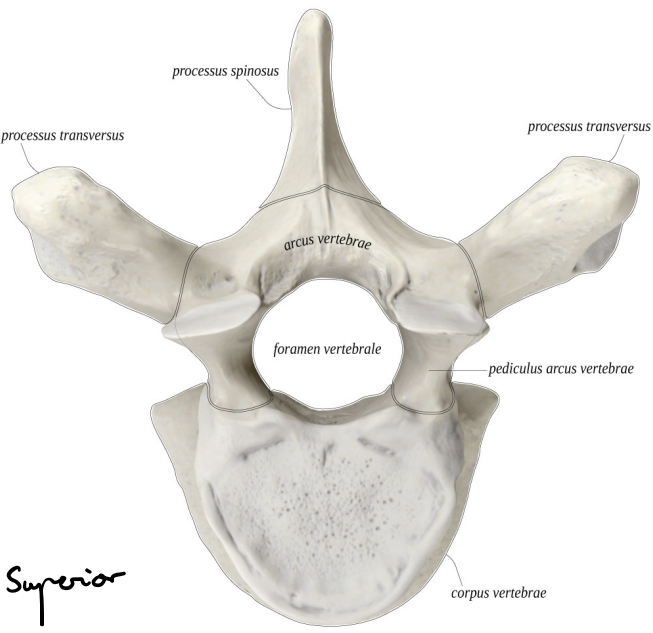


## Vertebrae cervicales

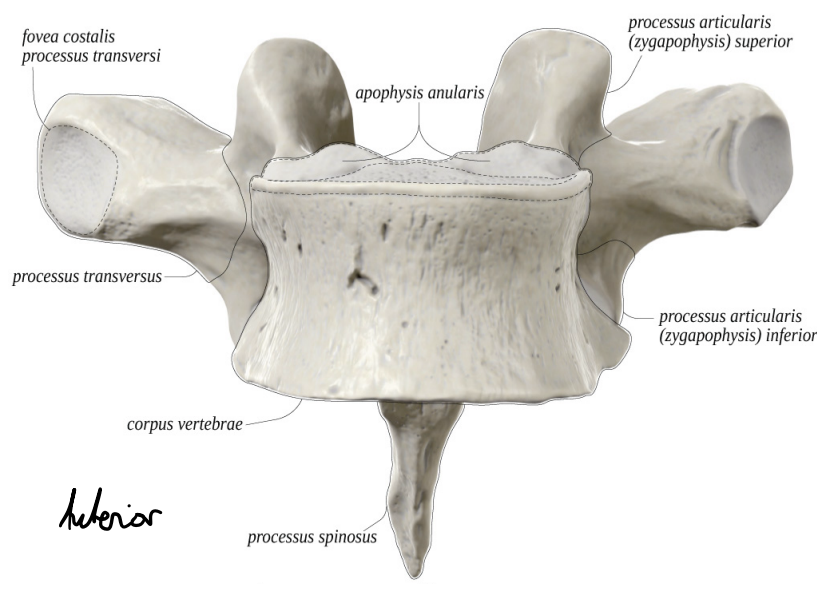




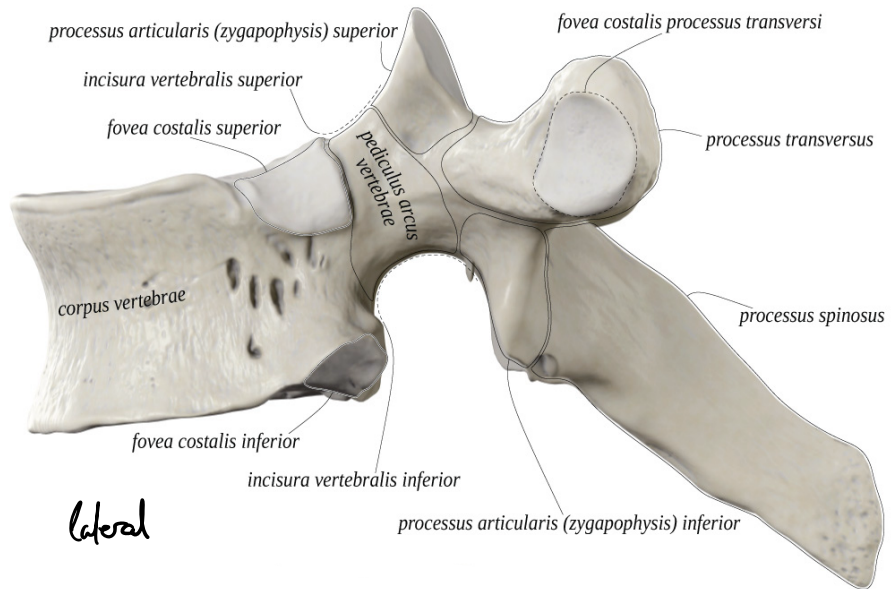
# Vertebrae thoracicae



Superior

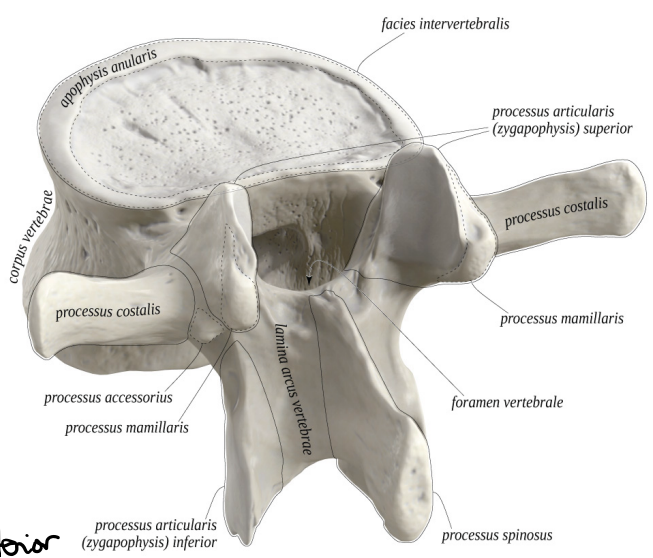


Anterior

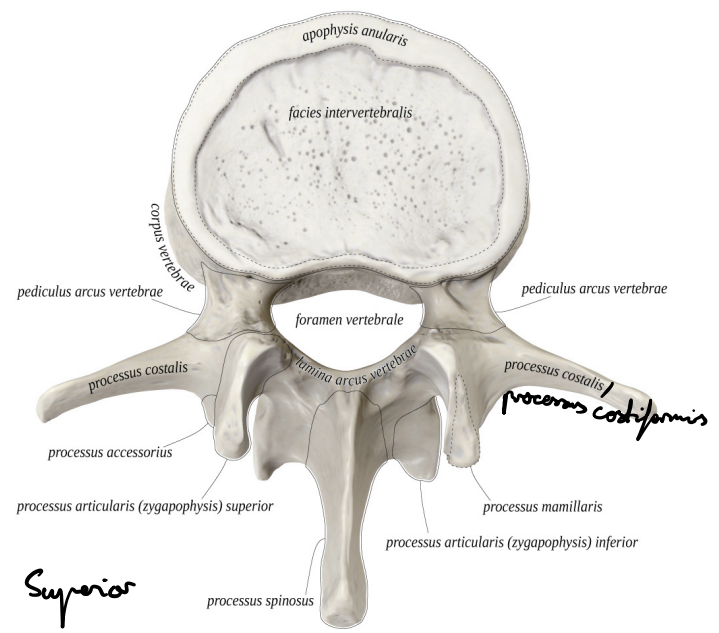


Lateral

# Vertebrae lumbales

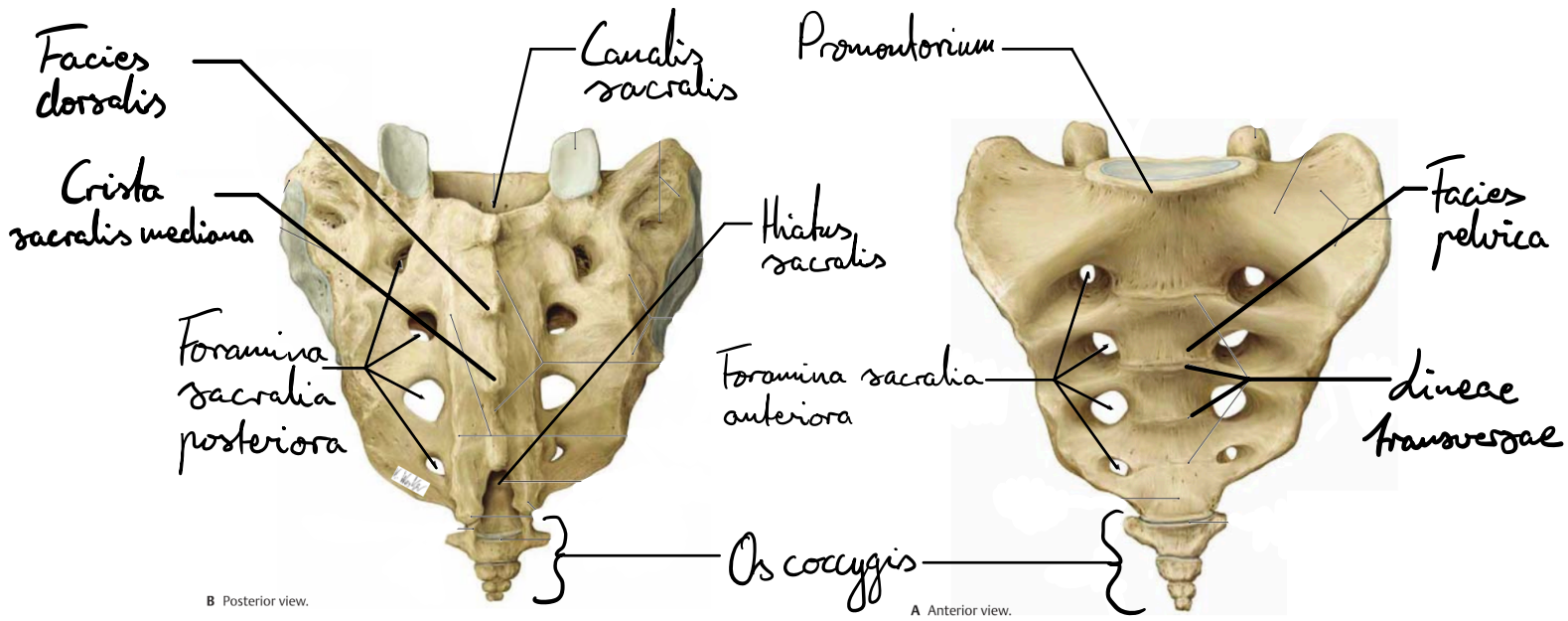


Posterior



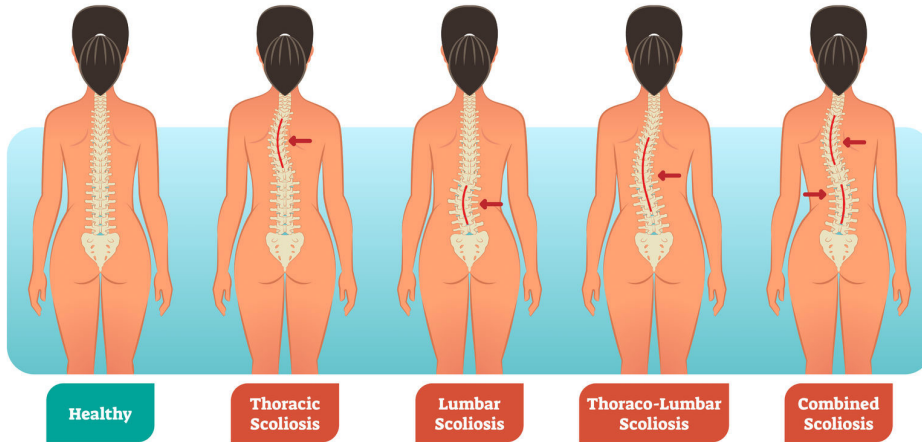
Superior

# Sacrum



## Arvikelser i form av ryggraden

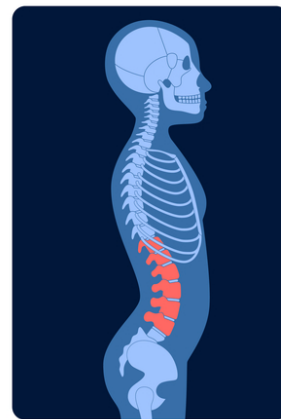
### TYPES OF SCOLIOSIS



Normal spine

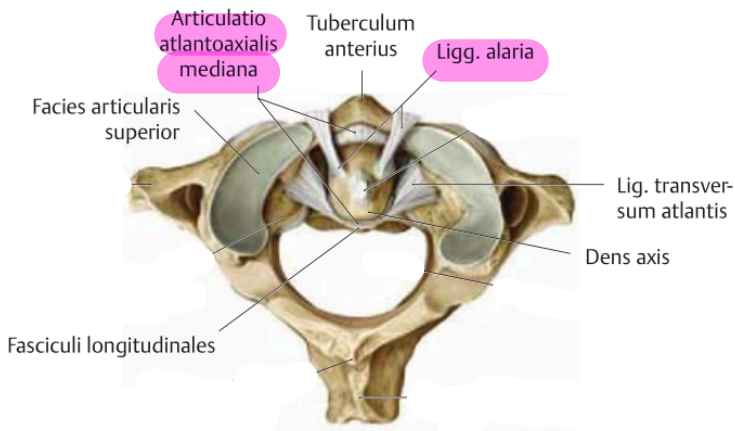
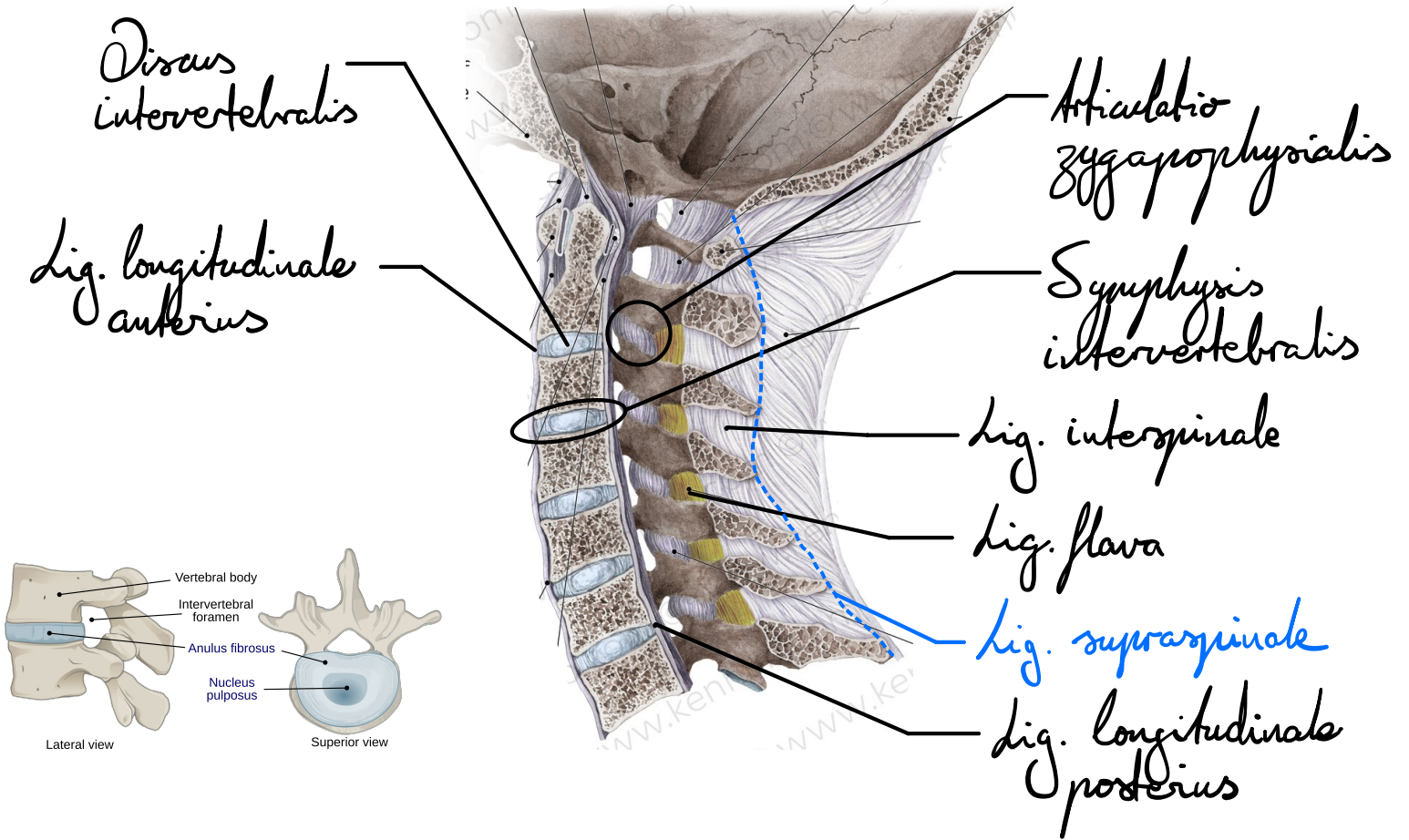


Kyphosis

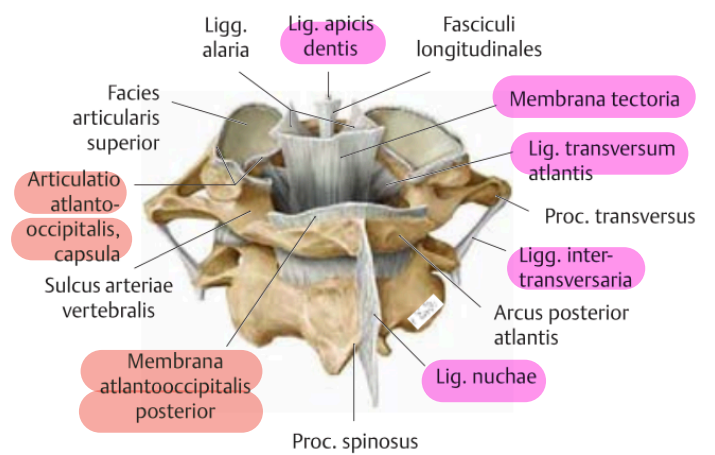


Lordosis

# Ligament & Articulationes

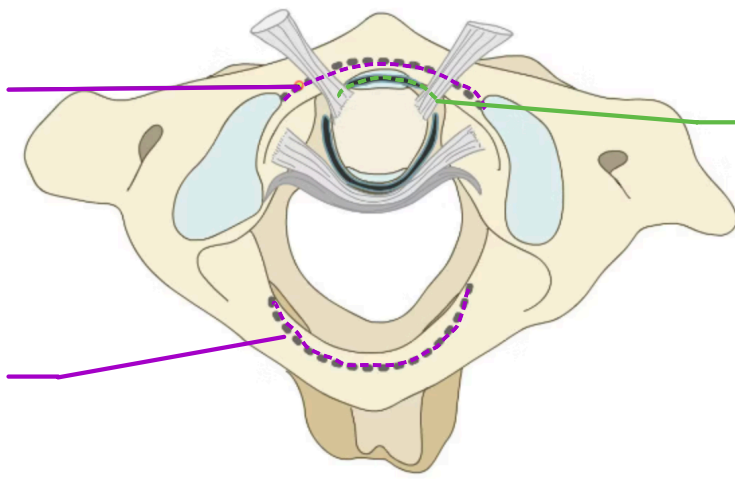


**A** Ligaments of articulatio atlantoaxialis mediana, superior view. Fovea dentis of the atlas is hidden by the joint capsule.



**B** Ligaments of the craniovertebral joints, posterosuperior view. Dens axis is hidden by membrana tectoria.

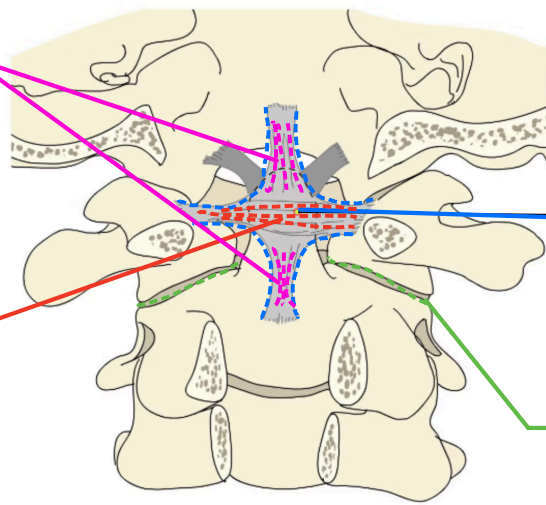
Membrana atlantooccipitalis anterior



Art. atlantoaxialis mediana

Membrana atlantooccipitalis posterior

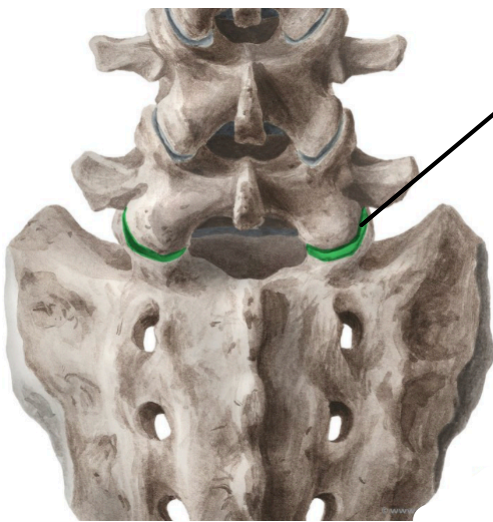
Fasciuli longitudinales



lig. cruciforme atlantis

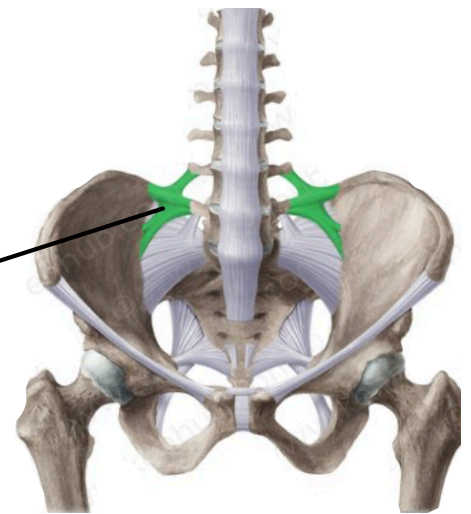
lig. transversum atlantis

Art. atlantoaxialis lateralis



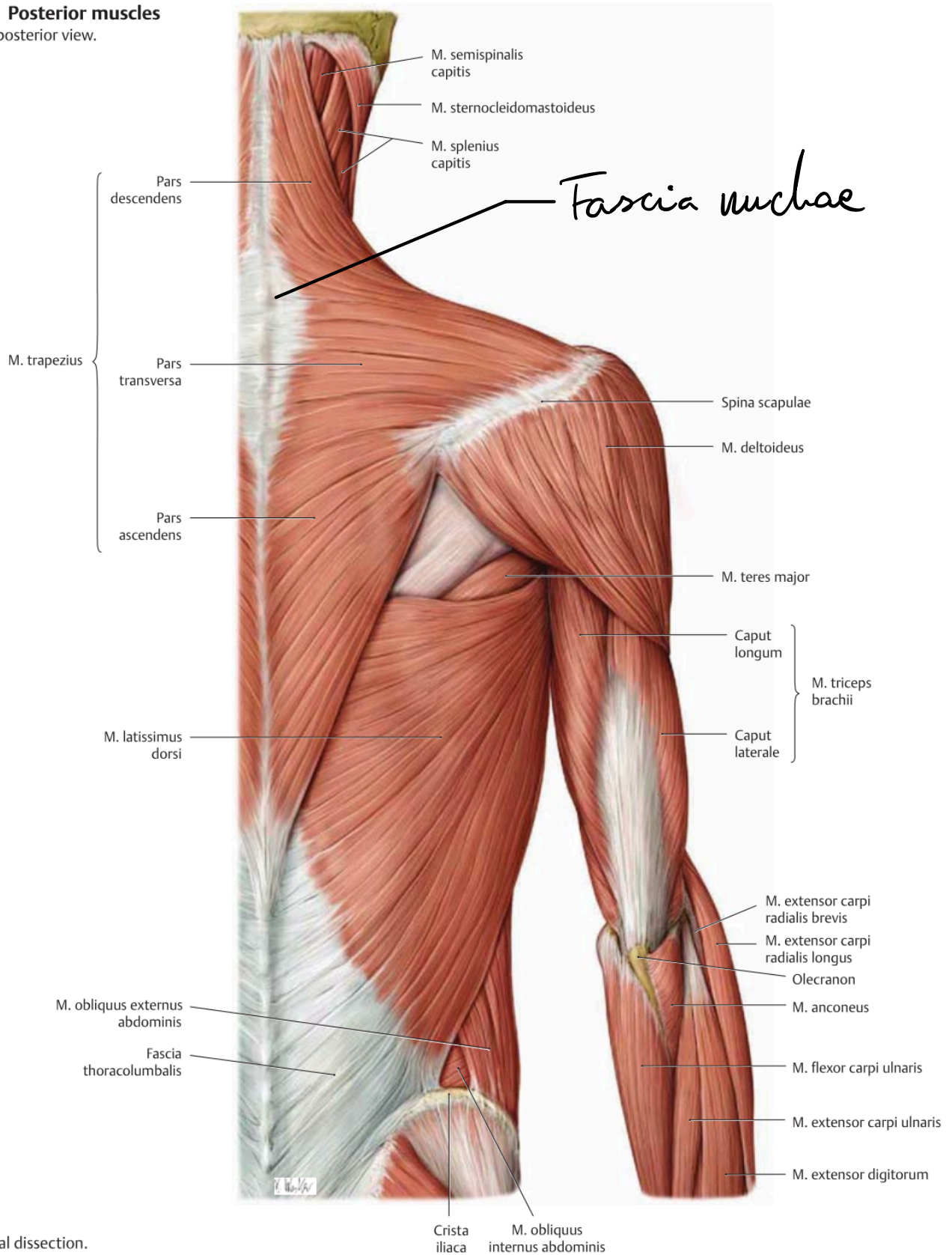
Art. lumbosacralis

dig. iliolumbale



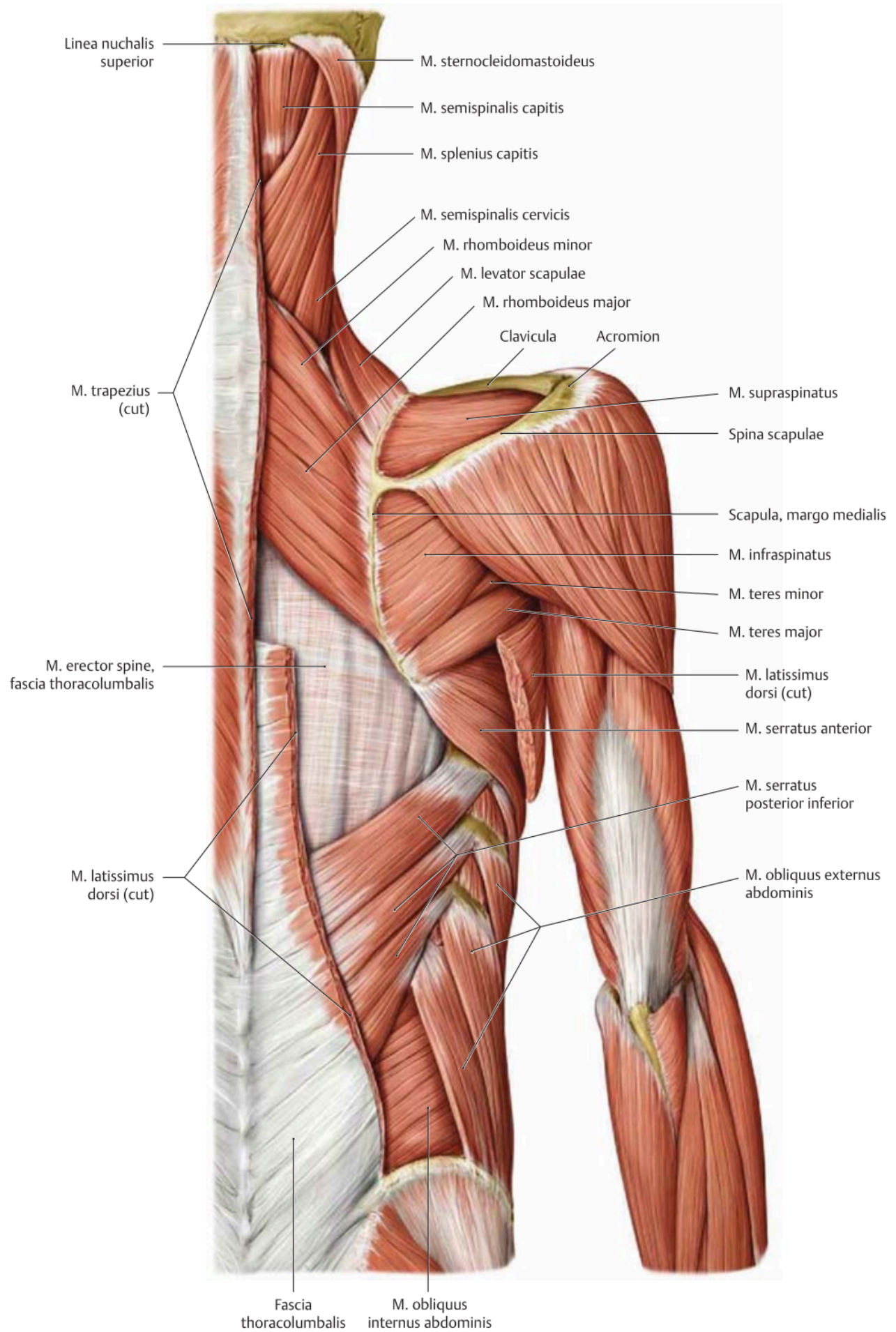
# Muscles

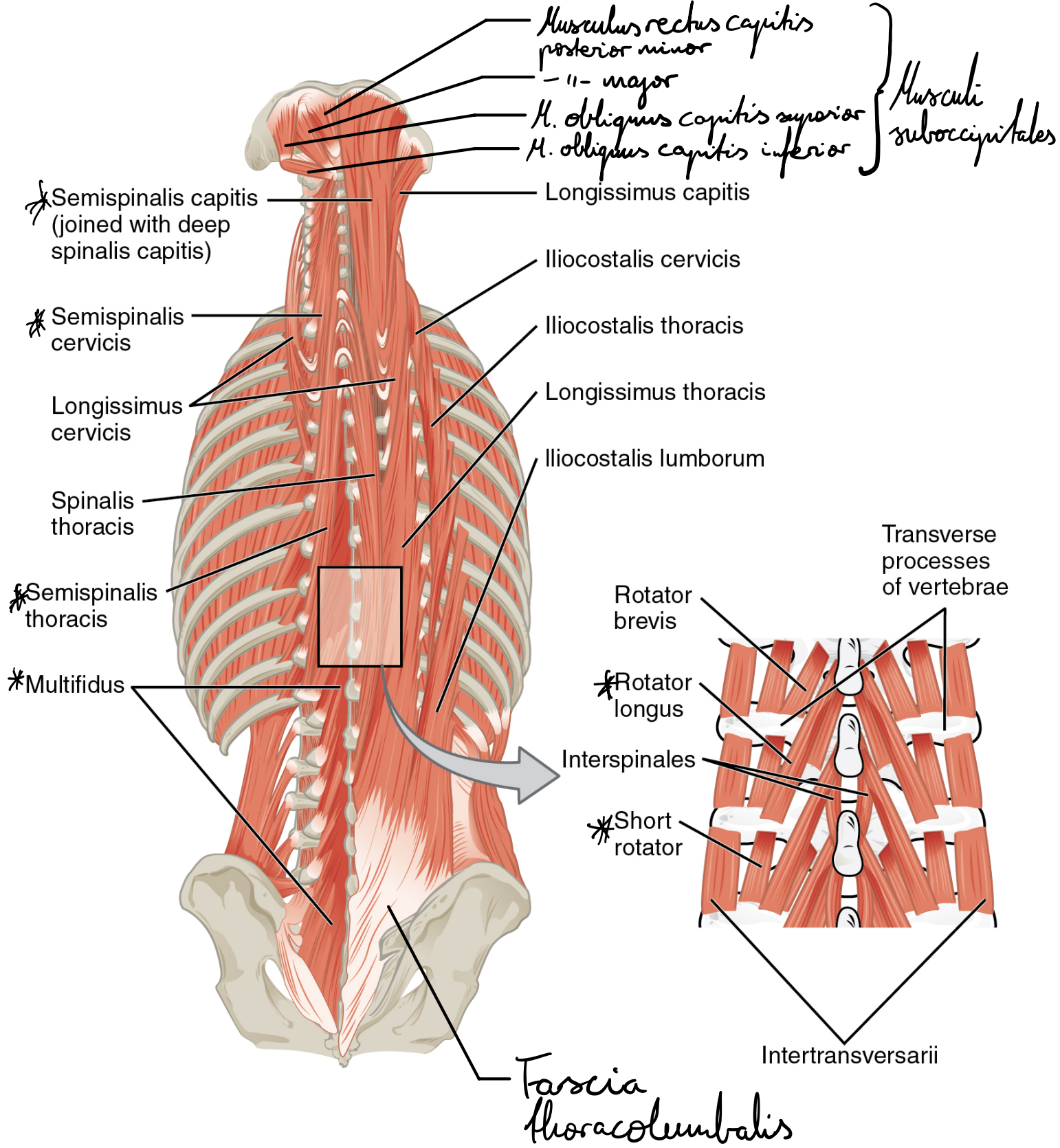
**Fig. 19.21 Posterior muscles**  
Right side, posterior view.



**A** Superficial dissection.

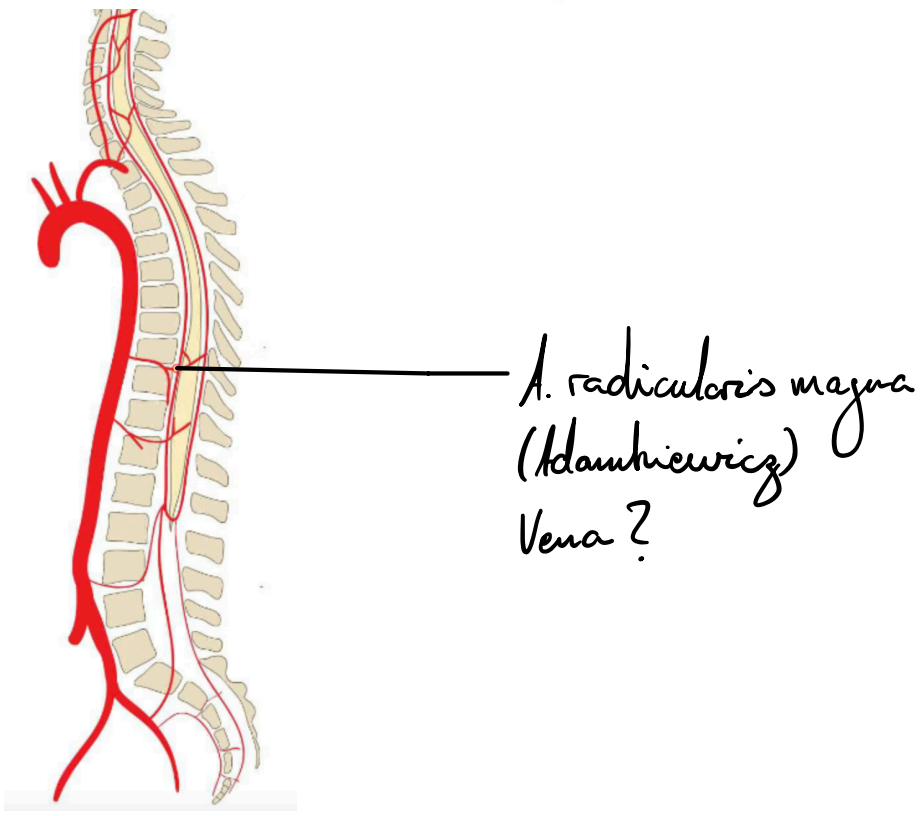
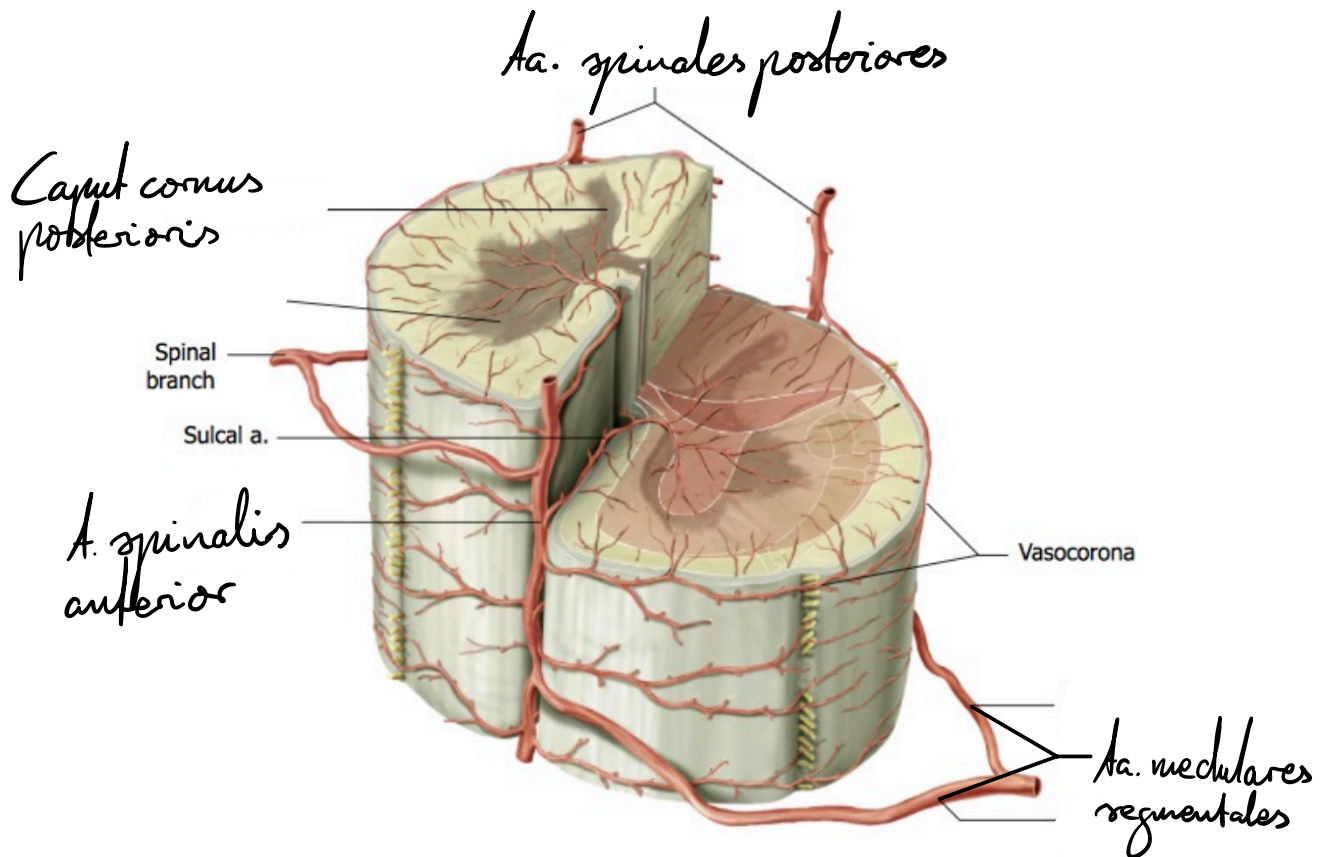


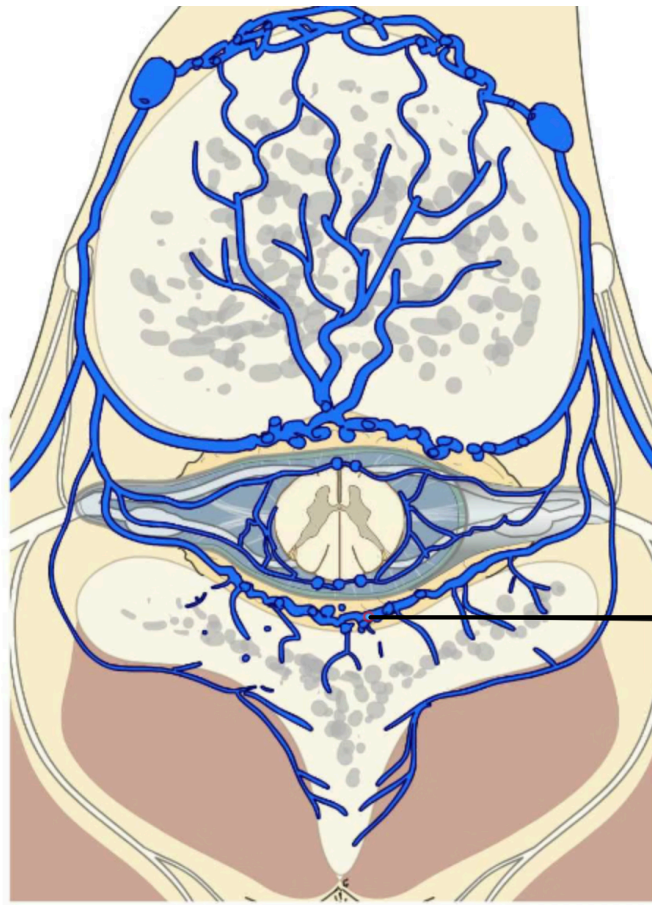




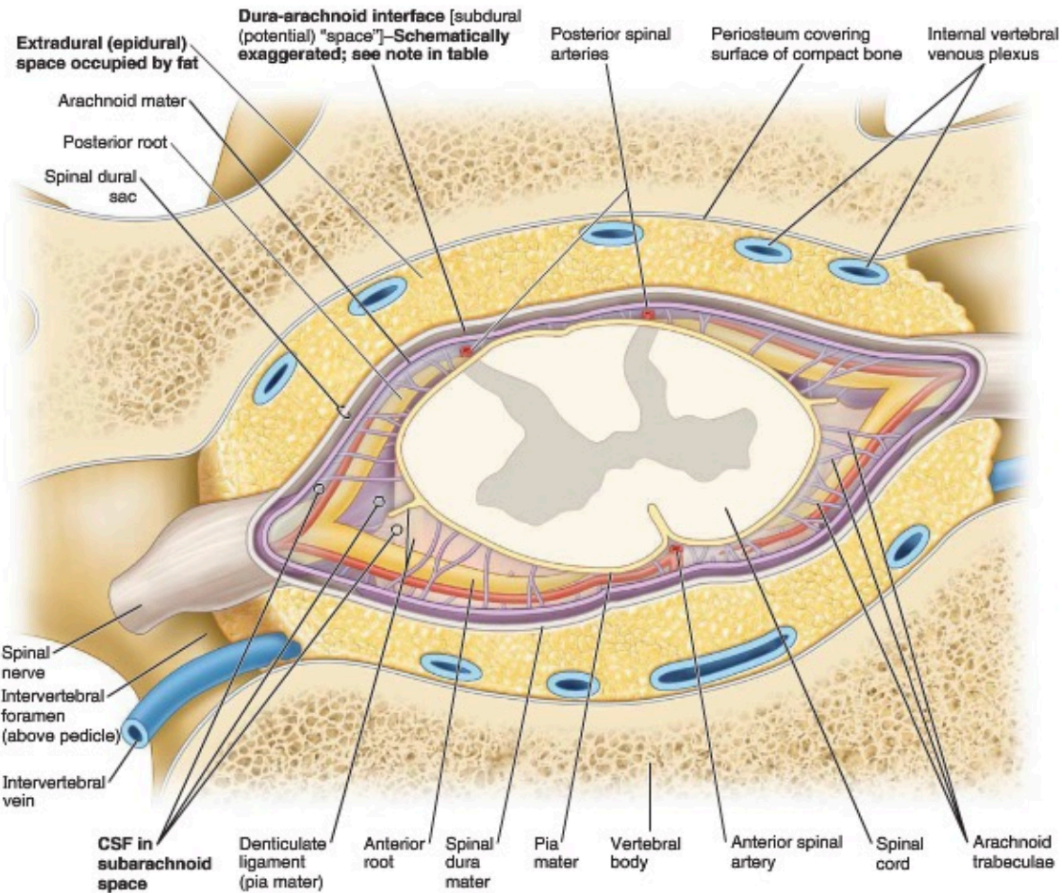
\* mm. transversospinalis  
 → mm. semispinalis  
 → mm. multifidi  
 → mm. rotatores

# Circulation



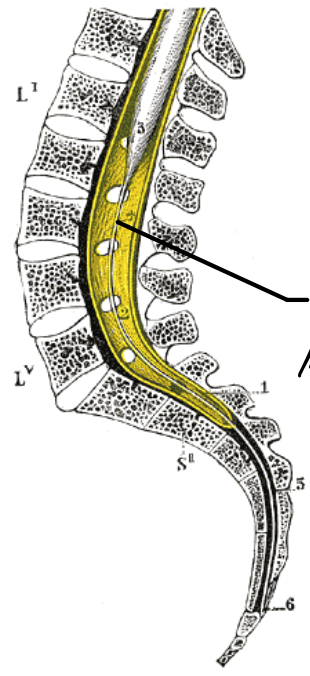
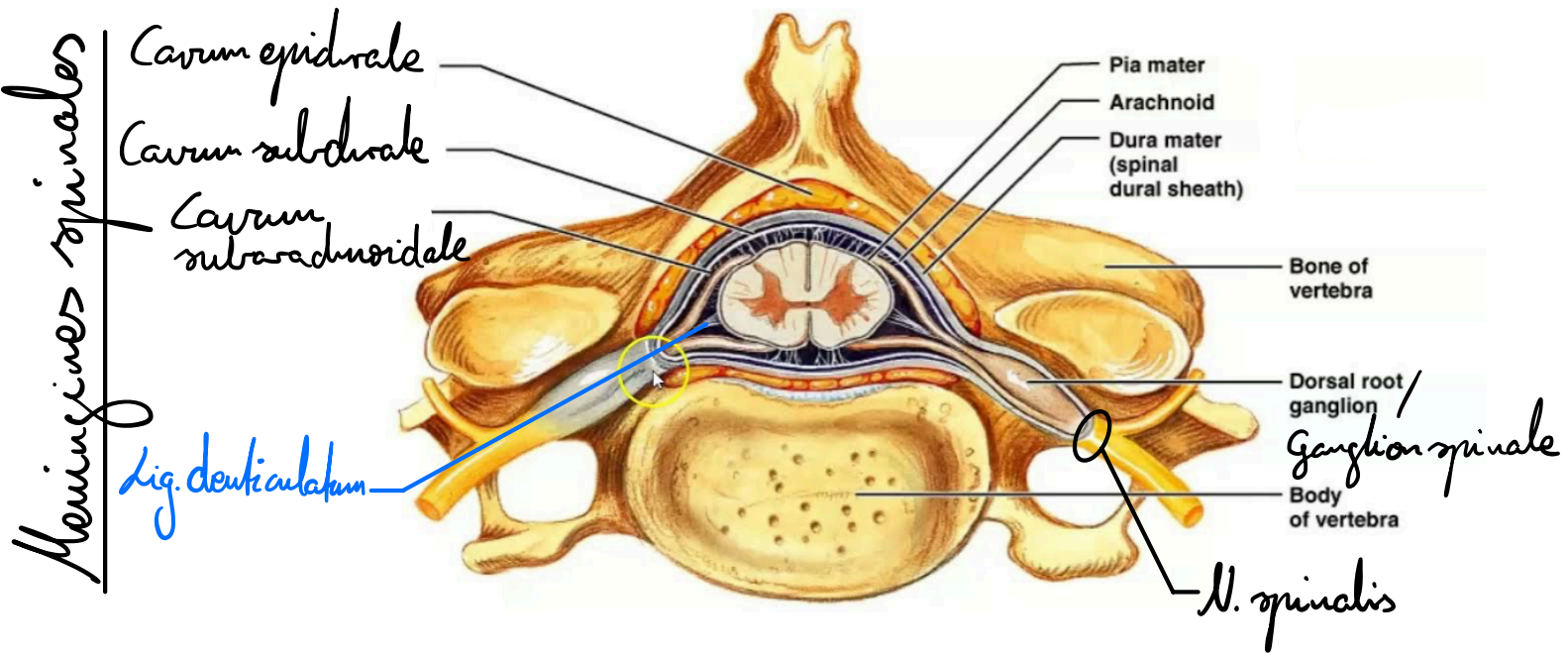


*Plexus venosus vertebralis*

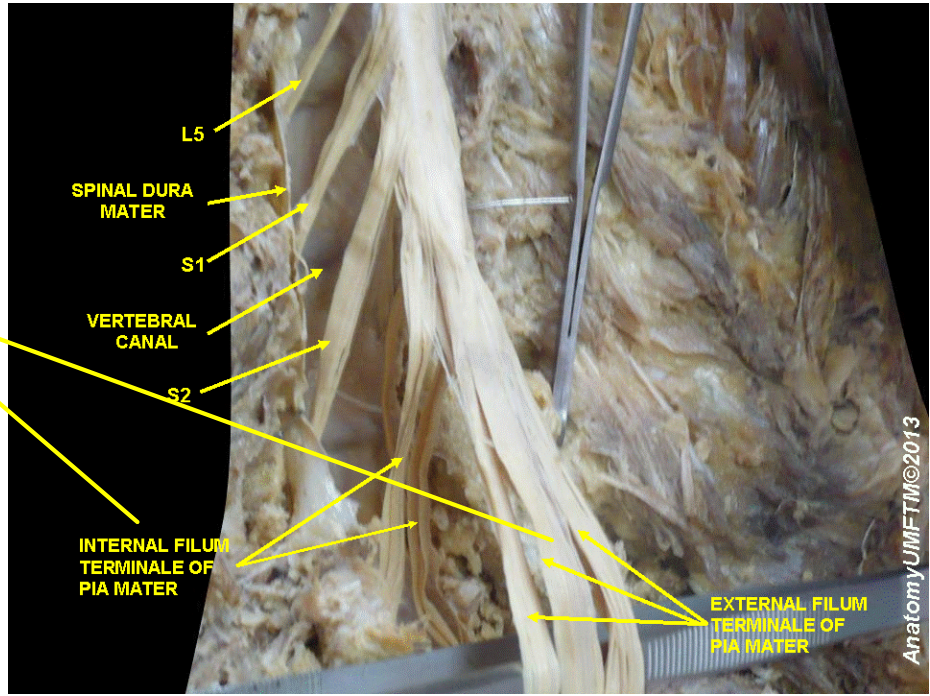


*Meninges spinales:*  
 - *Dura mater spinalis*  
 - *Arachnoidea*

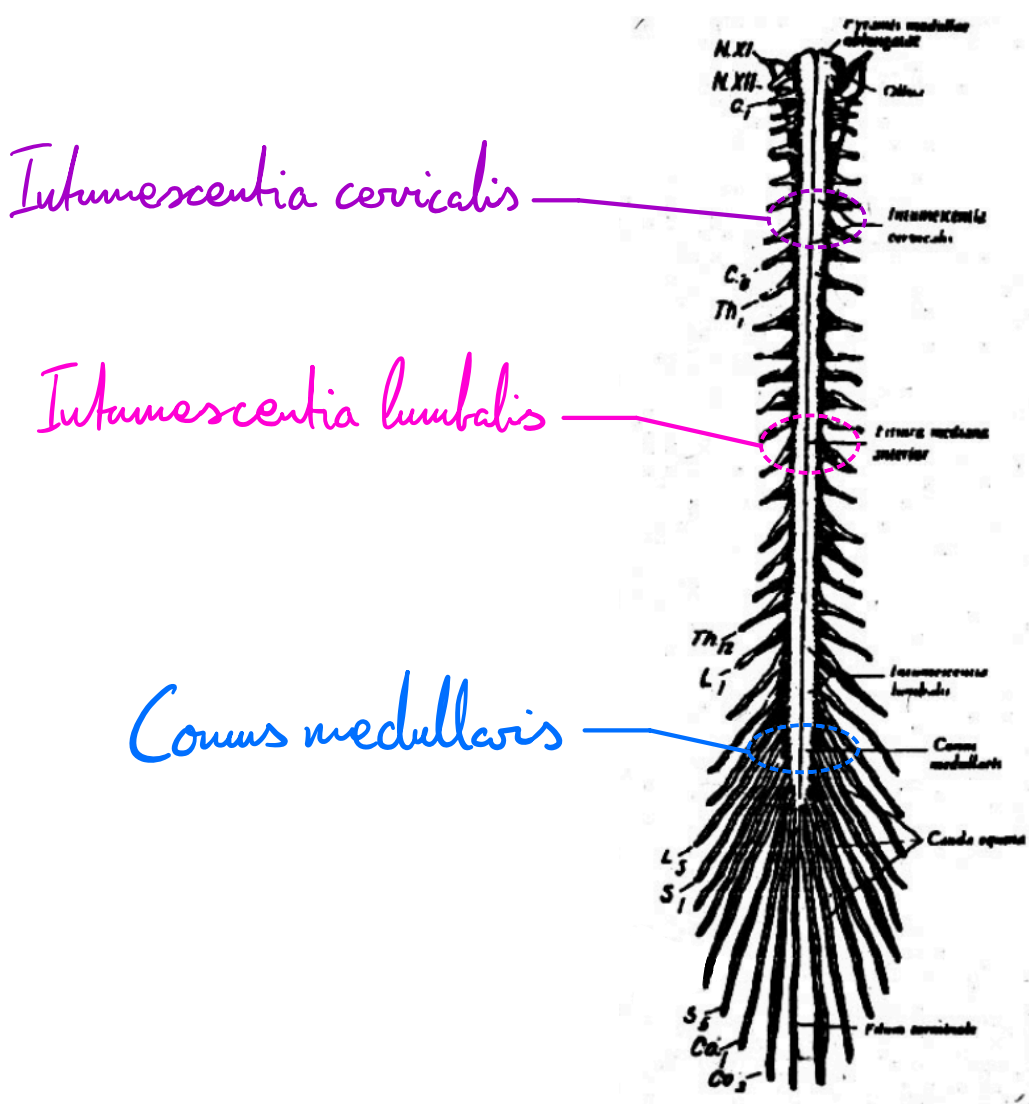
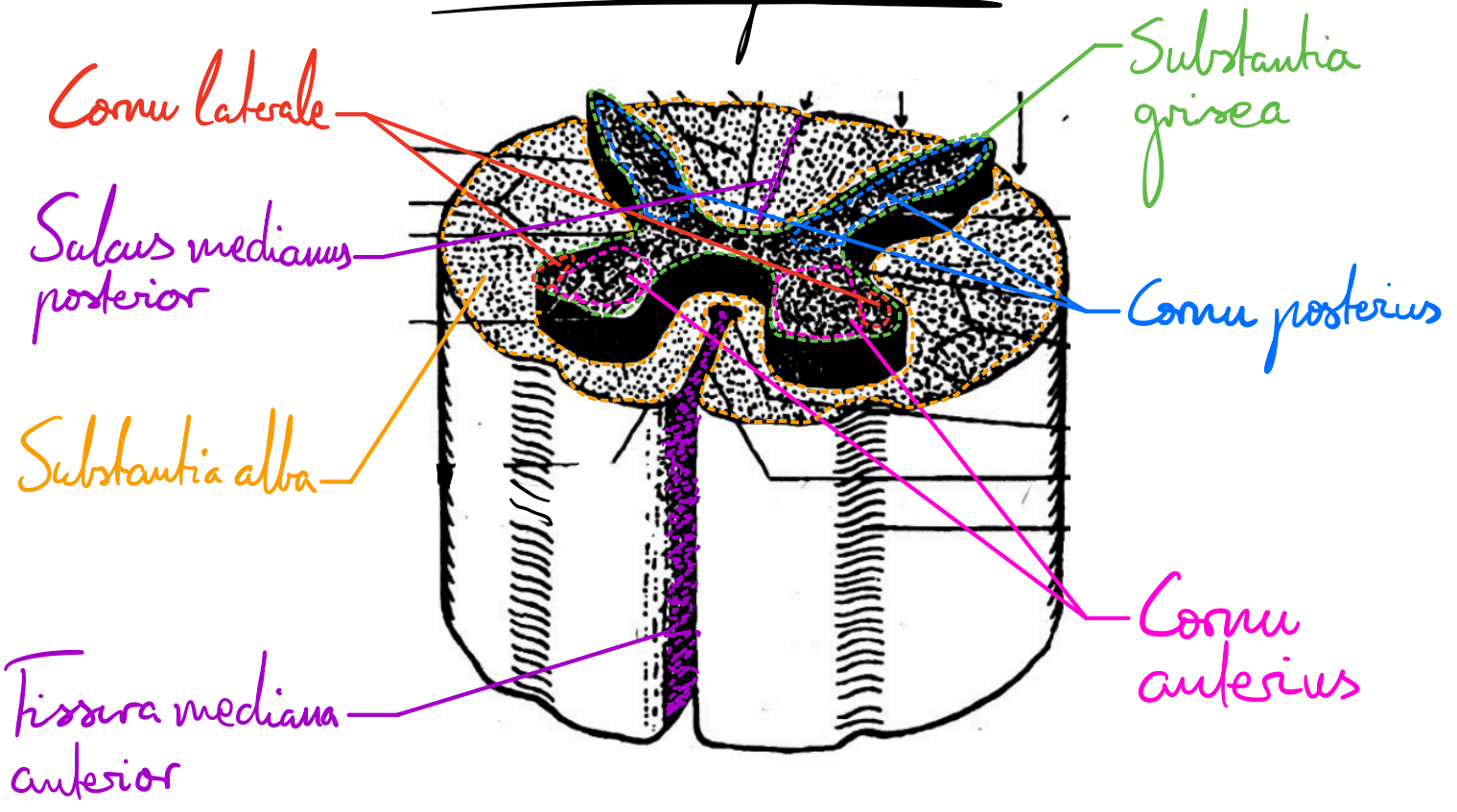
*Venes & Systema nervosum  
 pars centralis*



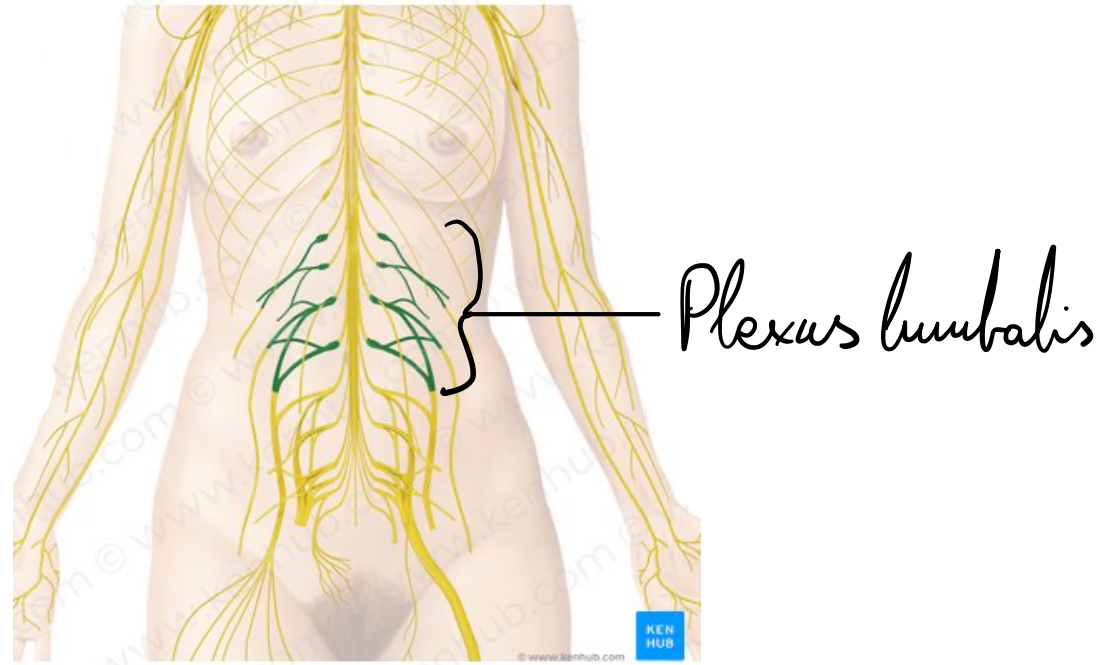
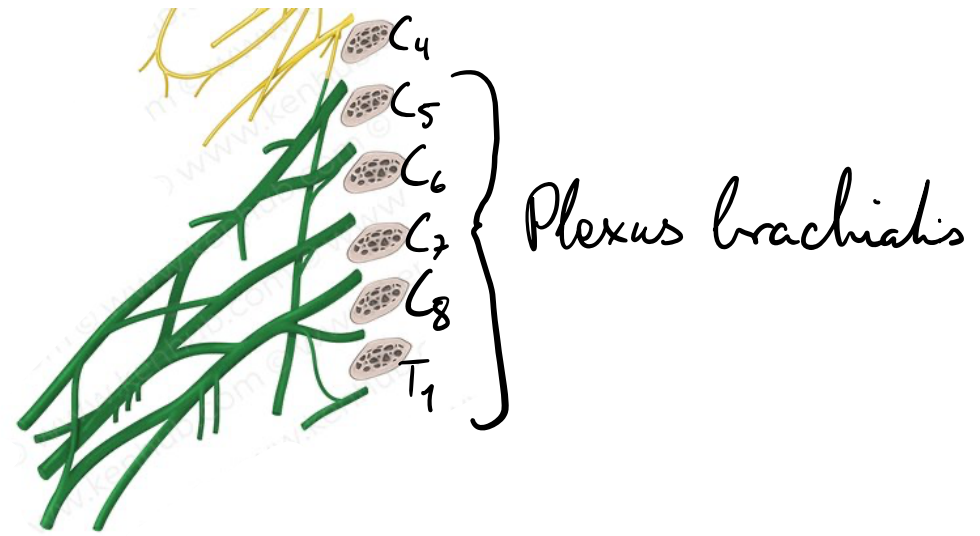
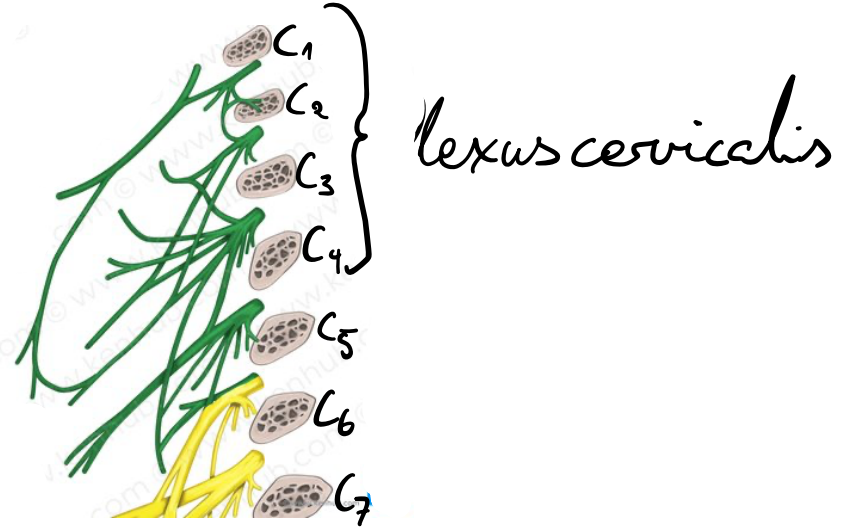
?  
 Filum terminale



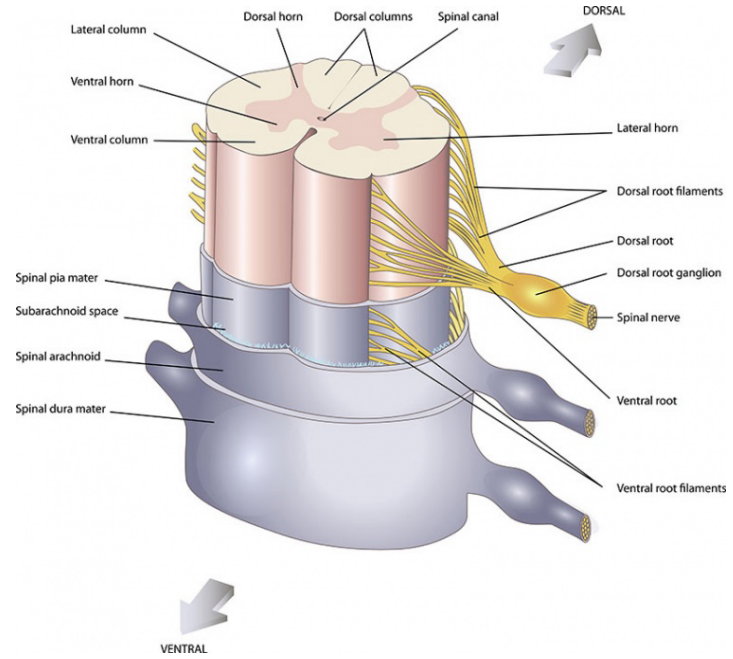
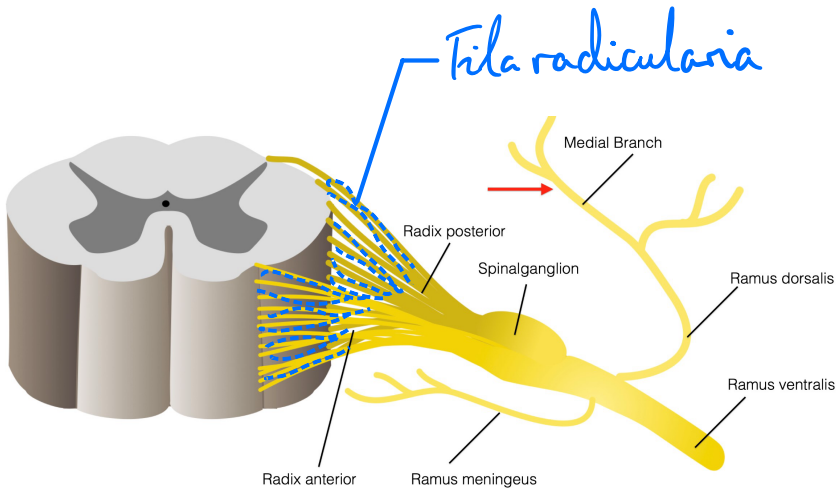
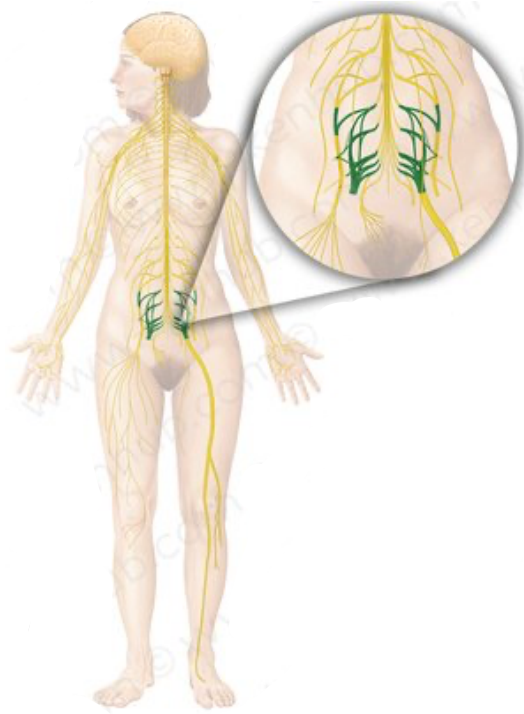
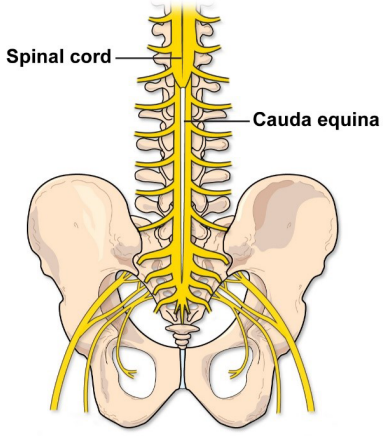
# Medulla spinalis



# Systema nervosum pars peripherica



# Plexus sacralis





# Systema nervosum pars autonoma

Truncus sympathicus

